

# YETI<sup>®</sup>

## TUNDRA<sup>®</sup> & ROADIE<sup>®</sup>

---

OWNER'S MANUAL



**THE COOLER YOU'VE  
ALWAYS WANTED**  

---

**THE LAST YOU'LL  
EVER NEED™**



**Congratulations!** You now own a YETI®, the world's best cooler. Durable design and construction assure you a lifetime of extreme performance. No cooler is tougher. No cooler keeps ice longer. No cooler compares.

Take a look through this owner's manual to learn how the pros use their YETI® Coolers in the wild.

# DIMENSIONS AND CAPACITY

MODEL	DIMENSIONS			CAPACITY	
	L	W	H	Gal	Cans*
Roadie® 20	19¼	13¾	14¾	5.2	14
Tundra® 35	21	16	15½	7.2	20
Tundra® 45	25½	16	15¾	9.4	26
Tundra® 50	24	17¾	18	11.8	32
Tundra® 65	30½	17½	16	14.3	39
Tundra® 75	33¼	18	18	18.7	50
Tundra® 105	30½	19½	20	21.8	59
Tundra® 110	37	18	20	24.1	65
Tundra® 125	40	19½	20	30.3	81
Tundra® 160	45	19½	21½	37.5	100
Tundra® 250	55	22⅝	21¼	58.1	155
Tundra® 420	63⅝	24½	27¼	100.6	268

\*Using the recommended 2:1 ratio of ice to contents

For detailed external and internal measurements please visit [yeticoolers.com](http://yeticoolers.com)



## **⚠️ WARNING** Risk of Child Entrapment

It is possible for children to be trapped inside this cooler and suffocate. Keep cooler out of children's reach when not in use.

# MAXIMIZING ICE RETENTION

A YETI® Cooler, with its roto-molded construction, heavily insulated walls and lid, and freezer quality sealing gasket, provides remarkable insulating performance and ice retention capabilities.

To get the most from your YETI's insulating qualities, we strongly recommend you read the concepts outlined below. These techniques are used by seasoned outdoor professionals who rely on extended ice retention.

## Start with a cool YETI® Cooler

A cooler is designed to insulate, which means it will retain heat as well as cold. For this reason, try to store your cooler in a cool environment prior to loading it with ice. If stored in direct sunlight, a warm garage, or a hot vehicle prior to use, a significant amount of ice will be wasted cooling the cooler itself. One way to cool the walls is to pre-load it with a sacrificial bag of ice. The starting temperature of the cooler is one of the most commonly overlooked variables in ice retention.

## Freeze or pre-chill contents

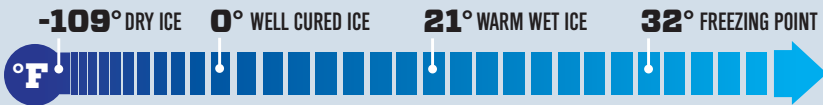
Chilling or even freezing the contents you intend to load into your cooler is an often overlooked way to extend ice retention. Consider that it will take over 1 lb. of ice to cool a six-pack of canned beverages that started at room temperature.

## More ice is better

We recommend filling your cooler with as much ice as possible. Ideally, you want to have an ice to contents ratio of 2:1. Please keep in mind that when two YETI® models are completely filled with ice, the larger of the two will retain ice longer.

## Not all ice is created equal

Ice can get much colder than its freezing point. "Warm" ice (near 32°F) is typically wet to the touch and dripping with water. Cold, sub-zero ice is relatively dry and will last substantially longer.



## PRO TIP: USE DRY ICE

Dry ice provides 3x the cooling power of regular ice, leaving more room for contents. Unlike ordinary ice chests, which crack when exposed to dry ice, a YETI® Cooler is designed to stand up to this extreme temperature. Consider using dry ice in any situation where extended cooling power is necessary, such as long trips or power outages. It can be used by itself or in conjunction with regular ice.

**DRYICE™**  
**COMPATIBLE**

Dry ice must be handled with protective gloves to prevent frostbite. It will likely freeze the contents in the cooler and can cause aluminum cans to rupture. Keep dry ice away from small children. Ventilation is extremely important. With improper ventilation, the gas emitted from dry ice can cause shortness of breath and loss of consciousness.

## Sunlight is a heat source

Coolers are white (or light colored) for a reason. White absorbs less heat. When possible, keep your cooler out of direct sunlight. Ice will last substantially longer when the cooler is in the shade. Some pros use towels or tarps to cover their coolers when they cannot find a shaded spot.

## Block ice vs. cube ice

The advantage of block ice is that it will melt much more slowly than cubed or shaved ice. Smaller pieces of ice will chill a cooler and its contents more quickly but will not last as long. In fact, fishermen often use shaved ice to quickly chill their catch. Most pros use a mixture of cube and block ice for the dual purposes of rapidly chilling contents and achieving long-term ice retention.

## Don't drain the water

Once your cooler is in use, we recommend you avoid draining the cold water, if possible. The water in your cooler will be almost as cold as the ice and will help insulate the remaining ice. However, it is advisable to keep exposed food and meat out of the water.

## Air is the enemy

Large areas of air inside your cooler will accelerate ice melt since a portion of the ice is consumed cooling the air. Air space voids are best filled with extra ice. However, if weight is a concern, do like the pros and use other materials such as towels or crumpled newspaper to fill these air space voids.

## Limit cooler access

Frequent lid opening will accelerate ice melt. Every time you open your cooler, you are letting cold air escape. Limit cooler access and the time the cooler is open, especially when it is very warm outside. In extreme cases, professionals limit their cooler access to a few times per day.

Applying the tips and techniques provided in this Owner's Manual is the key to achieving maximum ice retention with your YETI®. Due to all of the variables that affect ice retention, and because every adventure is different, we believe it is misleading to make specific claims about how long a cooler will hold ice.

## PRO TIP: USING ROCK SALT

If you are looking to super-chill your beverages, here is a pro tip that can make the difference: Rock Salt. This will produce some of the coldest drinks you have ever had... and in a relatively short period of time. Here's how to do it:

1. Properly fill your YETI® Cooler with beer and plenty of ice
2. Generously sprinkle rock salt on top of ice and close the lid
3. Wait 30 minutes, then enjoy frigid awesomeness

You can find this and many more Pro Tips and Tricks videos at [yeticoolers.com](http://yeticoolers.com)

**WARNING:** Once you master this technique, you may not want to drink beer any other way.



▶ WATCH THE VIDEO  
[yeticoolers.com](http://yeticoolers.com)

# CLEANING YOUR YETI

## Everyday cleaning

When your cooler gets a little muddy or grimy, a mixture of dish soap and water should do the trick. Dry the interior prior to storing your cooler.

## Tougher stains

For a more thorough cleaning, use a mixture of water and bleach (6:1 ratio) and scrub vigorously with a mildly abrasive brush.

## High pressure washing

For the toughest stains and odors, use a high pressure sprayer such as those available at most do-it-yourself car washes.

## Hard-to-reach areas

In extreme cases, odors can get trapped in hard-to-reach areas such as the sealing gasket and drain plug assembly. Remove these components to clean them individually. Also, thoroughly clean the areas of the cooler where these components attach.

# GRIZZLY PROOF

*Ursus arctos horribilis* — the grizzly bear. Up to 1,500 pounds of muscle, teeth, claws and anger, they're one of North America's largest predators. But a YETI® Tundra® Cooler can take one. That's not just marketing speak: the Interagency Grizzly Bear Committee (IGBC) said, "The YETI Tundra Coolers withstand smashing, prying, scratching, biting and tossing by hungry bears." And you know the fine people at the IGBC aren't prone to exaggeration.



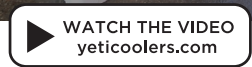
To certify that our Tundra® cooler was bear resistant, the IGBC subjected it to a series of rigorous tests, culminating in an hour-long encounter with two real-life adult grizzlies. When the smoke cleared, our ice chest was still intact and the bears were still hungry — although we think we detected a certain look of respect in their eyes.

## PRO TIP: PRESSURE WASHING

Pressure washers have over 35 times the water flow power of garden hoses, which comes in handy when trying to remove tough dirt and stains from your cooler. With the help of a pressure washer (found at most do-it-yourself car washes), your YETI® Tundra® or Roadie® Cooler will sparkle like the first day you bought it.

Use smooth, overlapping strokes, starting at the bottom and working your way up the cooler.

Pay close attention to both the spray angle and the distance when using a pressure washer. Spraying too closely could damage the surface of your cooler rather than clean it, so hold the wand a couple of feet from the surface and gradually move closer if additional cleaning power is needed.



# 5 YEAR WARRANTY

**We stand behind every cooler we make. If any part of your YETI® malfunctions or breaks, simply contact us for prompt repair or replacement. Don't worry, it's a YETI®!**



All YETI® Coolers are warranted against defects in material and workmanship for 5 years after original purchase. This warranty applies only to the original owner. This warranty is void if the cooler is used commercially, structurally altered, damaged as a result of abnormal use or subjected to stress beyond the physical limits of the materials used in body or components. Normal wear and tear is not warranted. This warranty does not include any manufacturer responsibility for any incidental or consequential damages resulting from the use of the cooler.

If the warranty applies, YETI® Coolers will repair or replace, at its discretion, the cooler or any part or component that is deemed defective.

YETI® Coolers reserves the right to change products and designs without incurring any obligations to incorporate such changes into already completed products, or those in the hands of dealers or consumers. Coolers repaired or replaced under this warranty may or may not incorporate these changes.

Damaged products must be returned directly to YETI® Coolers, in original box or adequate cardboard packaging, freight prepaid. To obtain an RMA (Return Materials Authorization) number, contact the YETI Outfitter team at [customerservice@yeticoolers.com](mailto:customerservice@yeticoolers.com). Please include a copy of original sales receipt and the RMA number with the returned product. To register your YETI® Cooler and activate your warranty visit [yeticoolers.com](http://yeticoolers.com) or contact YETI Customer Service at 512.394.9384.

## PRO TIP: FLY LINE PROOFING

As all fly fishermen know, if there's something for a fly line to snag, it will find it. Follow these steps to fly line proof your YETI® Cooler:

1. Remove the latch pins on both sides of the cooler lid with a flat-head screwdriver
2. Flip the T-Rex™ Lid Latches so they bend towards the body of the cooler
3. Reinsert the pins to secure the Lid Latches back in place
4. Consider removing the rope handles



▶ WATCH THE VIDEO  
[yeticoolers.com](http://yeticoolers.com)

# YETI® ACCESSORIES

Your YETI® Cooler can only get better with these outstanding accessories. Visit [yeticoolers.com](http://yeticoolers.com) to shop the complete line.



## Tie-Down Kit

Our #1 mounting system! Secure your YETI® Cooler in a boat, truck bed, trailer, or barbecue rig with the YETI® Tie-Down Kit. When not in use, only the low profile deck plates remain, leaving nothing to trip over. Kit includes two nylon straps with stainless steel cam buckles, deck plates, and mounting hardware. All hardware is marine-grade stainless steel.



## Security Cable Lock & Bracket

Protect your investment! The YETI® Security Cable Lock & Bracket are perfect for securing your YETI® Tundra® Cooler in a truck bed or any other area where it's vulnerable to opportunistic street thugs.



## Sliding Feet

Need your YETI® Cooler to slide? Simply replace the BearFoot™ Non-Slip Feet with these hard plastic Sliding Feet. Four Sliding Feet and marine-grade stainless steel hardware included.



## Corner Chock Set

Secure your YETI® Cooler with heavy-duty rubber Corner Chocks. Rubber provides excellent, non-abrasive support and can withstand years of wear and sun exposure. Kit includes 4 rubber Corner Chocks, 2 marine-grade bungees, and stainless steel mounting hardware.



## SeaDek® Slip Resistant Pad

This durable, slip-resistant SeaDek®, made from 6mm EVA foam, provides excellent traction and extreme comfort when using your YETI® Cooler as a standing or casting platform. The higher you are off the boat deck, the further you can see down into the water. SeaDek® attaches permanently with a pressure sensitive adhesive backing. Custom fit for all YETI® Tundra® models up to the Tundra® 160.





### Seat Cushion - White

Your YETI® Cooler can do double duty. The YETI® Seat Cushion has at least two inches of dense foam and is made of tough UV-resistant vinyl stitched with GORE® TENARA® Sewing Thread. Screw the included studs into the cooler lid and snap the cushion in place. All hardware is stainless steel.



### Seat Cushion - Camo

Perfect for the duck boat, dove field, deer camp, or high-rack, these Realtree® Advantage Max-4 HD seat cushions are made of durable vinyl and stitched with long-lasting GORE® TENARA® Sewing Thread. Screw the included studs into the cooler lid and snap the cushion in place.



### Beverage Holder

Great for river trips, camping outings, or tailgates - the YETI Beverage Holder mounts to the side of your cooler and serves as a secure and convenient caddy for your frosty beverage. This heavy-duty, powder-coated stainless steel version slides securely into the AnchorPoint™ Tie-Down slot of your YETI® Cooler, allowing for easy access to other cooler contents.



### Rod Holster

Vertically mounts to the side of your YETI® Cooler for easy fishing rod access whether paddling or boating. Heavy-duty polypropylene body is attached to a sturdy, stainless steel, powder-coated bracket. Slides securely into the AnchorPoint™ Tie-Down Slot of your YETI® Tundra® without getting in the way of the lid.



### Drain Plug Hose Connection

This drain plug adapter allows you to drain your YETI® Cooler with a garden hose while it remains in place. The male end of the hose connection fits most standard hoses. When not in use, simply twist on the leak-proof cap.



### Bear-Proof Lock

Long shank Master Lock® protects your contents and certifies your YETI® Cooler as a bear-resistant container. Also keeps friends out of your beer!



# YETI® GEAR

## YETI Coolers™ Hats and Visors

Because wearing a cooler on your head is ridiculous.



## YETI Coolers™ Drinkware

The ultimate survival tools for keeping you hydrated in the field or on the water.



## YETI Coolers™ Apparel

Rugged yet remarkably comfortable. Available in a variety of styles and colors.



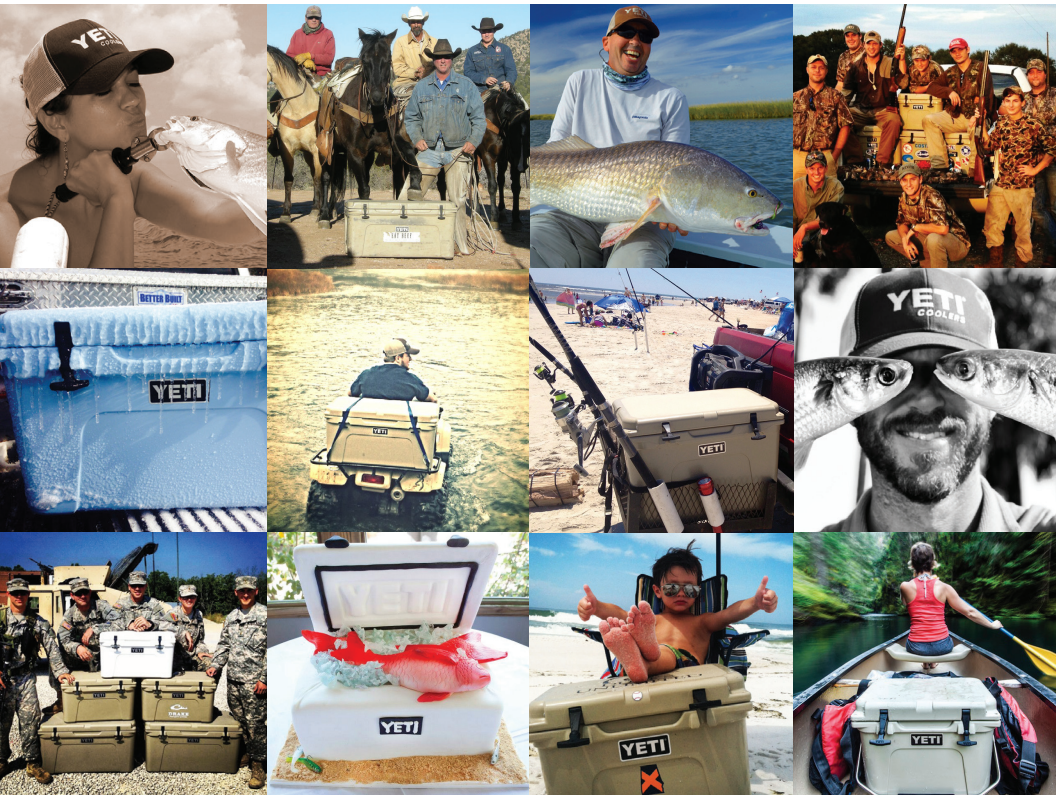
Shop the entire collection of gear and accessories at  
[yeticoolers.com](http://yeticoolers.com)

# YETI® NATION

As a YETI® Cooler owner, you are now a part of the incredible group of YETI® owners and fans that make up the YETI® Nation.

Be sure to follow us on Facebook, Twitter, Instagram, YouTube, Vimeo, and our website to join the conversation. This is a great way to exchange images and stories with other YETI® fans.

Plus, every month there are opportunities to win free YETI® Coolers, Gear, and Accessories.



FOLLOW YETI®



# YETI®

## QUICK TIPS TO MAXIMIZE ICE RETENTION

- 1** Pre-cool your YETI® Cooler
- 2** Freeze or pre-chill contents
- 3** Use cold, sub-zero ice
- 4** Use as much ice as possible
- 5** Consider using dry ice

Refer to pages three and four of this Owner's Manual for more ice retention facts and recommendations.



**Rate, Review, and Register  
your YETI® at [yeticoolers.com](http://yeticoolers.com)**

YETI Coolers, LLC P.O. Box 163686, Austin, TX 78716-3686  
Phone 512.394.9384 [info@yeticoolers.com](mailto:info@yeticoolers.com) [www.yeticoolers.com](http://www.yeticoolers.com)