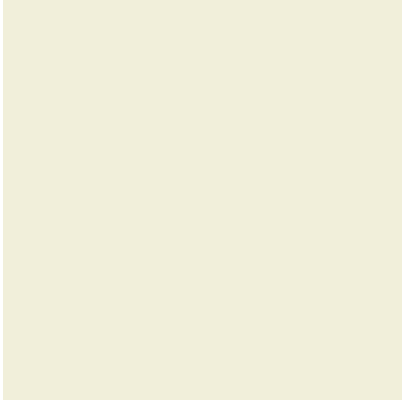


Vent-A-Hood® Range Hoods - Color Chart

Our standard colors are shown below but we also offer custom colors. Click [here](#) to see a custom color chart.



Biscuit

A smooth glossy finish.



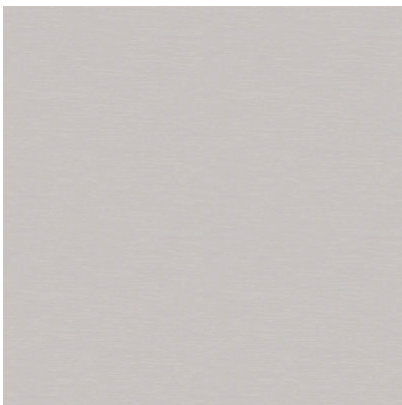
Black

A smooth semi-gloss finish.



Gunsmoke

A smooth semi-gloss finish.

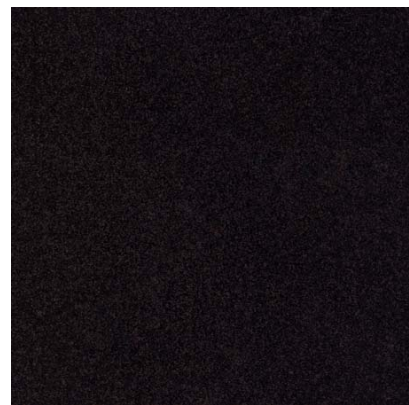


Stainless Steel

A brushed metal finish.

White

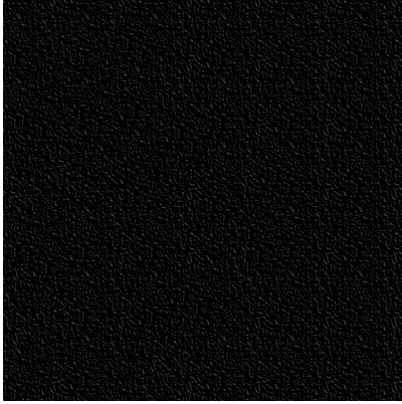
A smooth glossy finish.



Black Carbide

A lightly textured black finish.

NOTE: Actual texture may vary.



Black River

A lightly textured black finish.
NOTE: Actual texture may vary.



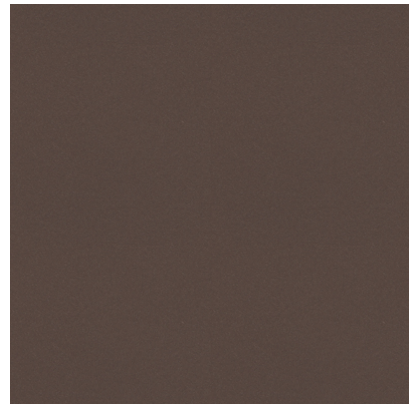
Copper Vein

A heavily textured finish with copper and black colors mixed. NOTE: Actual texture may vary.



Oil Rubbed Bronze

A smooth flat painted finish.



Pewter

A smooth semi-gloss painted finish.



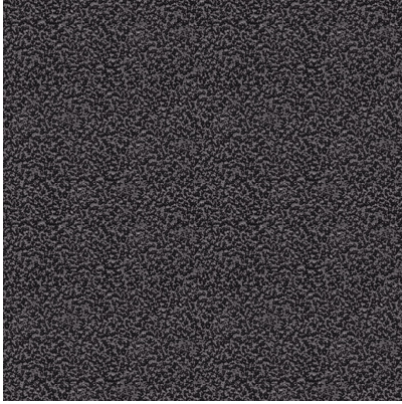
Rust

A lightly textured flat finish with copper and black colors mixed. NOTE: Actual texture may vary.



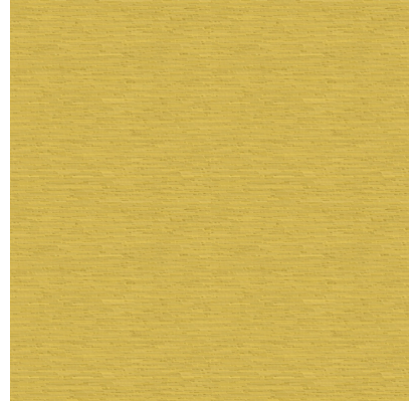
Rust Vein

A heavily textured gloss finish with copper and black colors mixed. NOTE: Actual texture may vary.



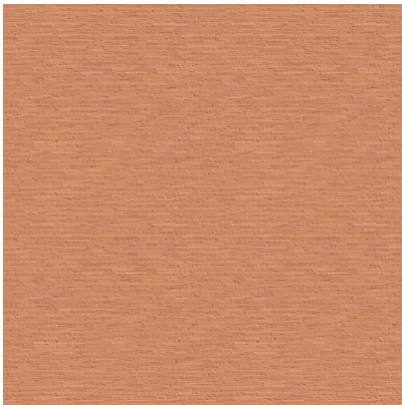
Silver Vein

A heavily textured finish with silver and black colors mixed. NOTE: Actual texture may vary.



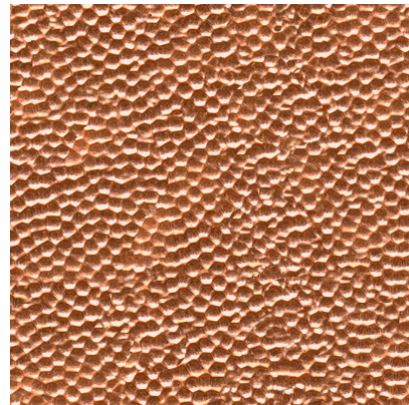
Real Brass

No. 8 mirror finish polished brass.



Real Copper

No. 8 mirror finish polished copper.



Hammered Copper

A polished copper with a hammered finish.

NOTE: Actual texture may vary.



Antiqued Copper

Real copper with a hand finished patina. Finished with a protective clear coating.

NOTE: Final product finish and texture may vary.



Antiqued Hammered Copper

Real hammered copper with a hand finished patina. Finished with a protective clear coating.

NOTE: Final product finish and texture may vary.