

Weight Capacity: 75 lb. | 34.02 kg**Universal Short-Throw Projector Wall Mount with Extension**

Features

- 1 Supports projectors weighing up to 75 lbs
- 2 Maximum extension of up to 67" away from wall
- 3 Perfect for education or corporate applications
- 4 Internal GearBox allows for A/V and IT component storage
- 5 PDS-PLUS projector can be adjusted for optimum viewing

The UNI-EPDS combines the universal PDS-PLUS-W projector mount and a universal short-throw projector wall mount fixture to create a complete solution perfect for applications like education or corporate environments. This mounting solution offers more adjustment options than any other projector arm, extending up to 67 in. from the wall.

For installation, the UNI-EPDS mounts to dual wood studs at 16, 18, or 24 in. spacing and does not require a stud located in the center of the whiteboard or screen. The GearBox within the mount provides storage for expensive A/V and IT components such as the PCs and Mac minis, and is secured with Lock-It security hardware. In addition, signal and power cables can safely run through the arm into the GearBox.

The projector mount portion, the PDS-PLUS-W, can support projectors up to 75lb. and is vertisitle with +/-16.5 inch pitch, +/-7.7 inch roll and 41 inch yaw. The UNI-EPDS was designed as an durable and affordable, all-in-one solution to make sharing information or captivating video a better experience for installers and users alike.



Universal Short-Throw Projector Wall Mount with Extension

UNI-EPDS

Specifications

Weight
50 lb. | 22.68 kg

Color
Black

Weight Capacity / Mount
75 lb. | 34.02 kg

Mounting Pattern
None

Depth
99.99 in. | 2539.75 mm

Diameter
16.43 in. | 417.32 mm

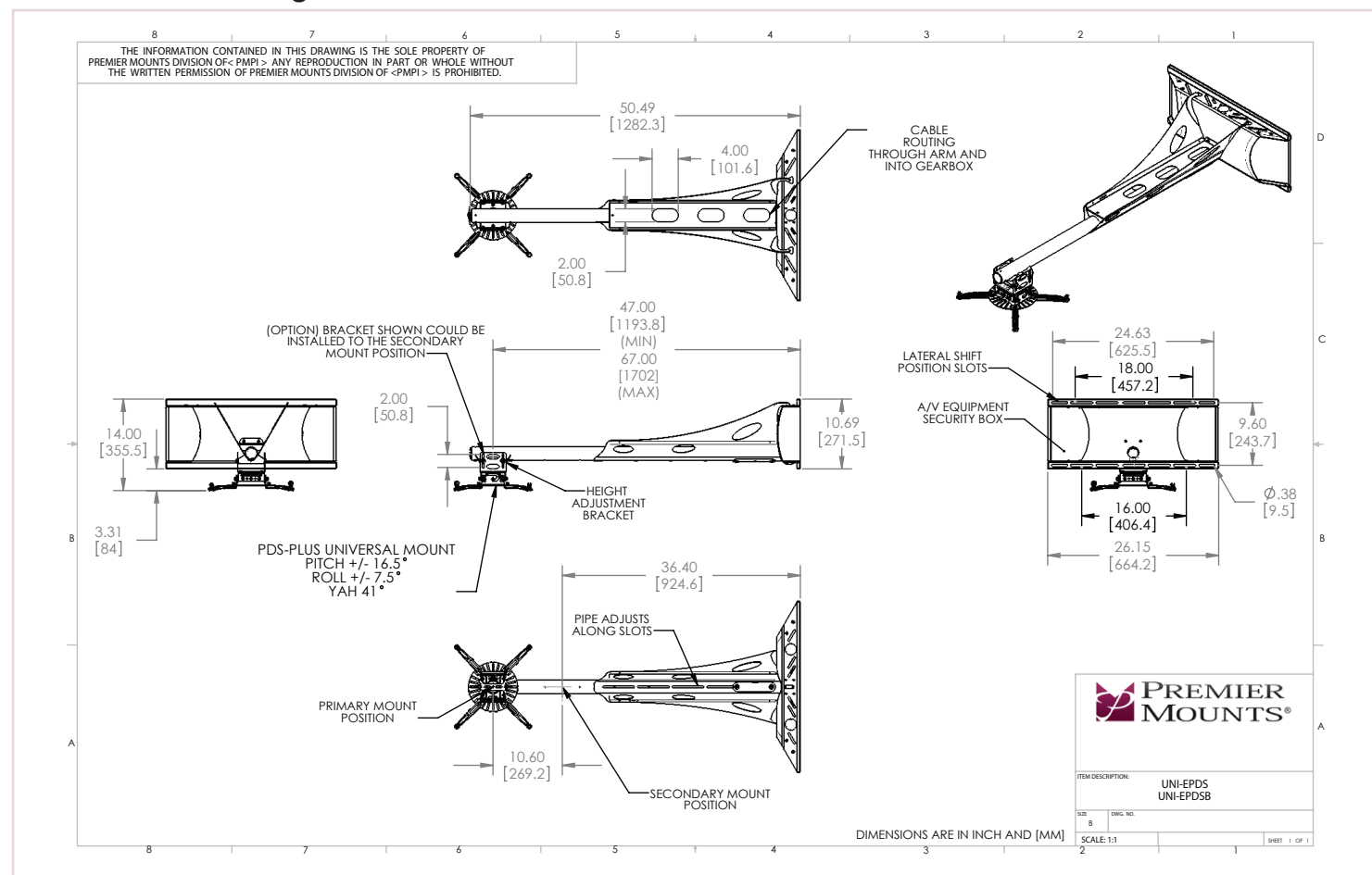
Warranty
Lifetime

Packaging

Contents

Mount (x1), Universal Hardware Pack (x1), Instruction Manual (x1)

Architectural Drawing



Specifications subject to change without notice

T: 800.368.9700 Int'l: +001.714.632.7100

PREMIER
MOUNTS