

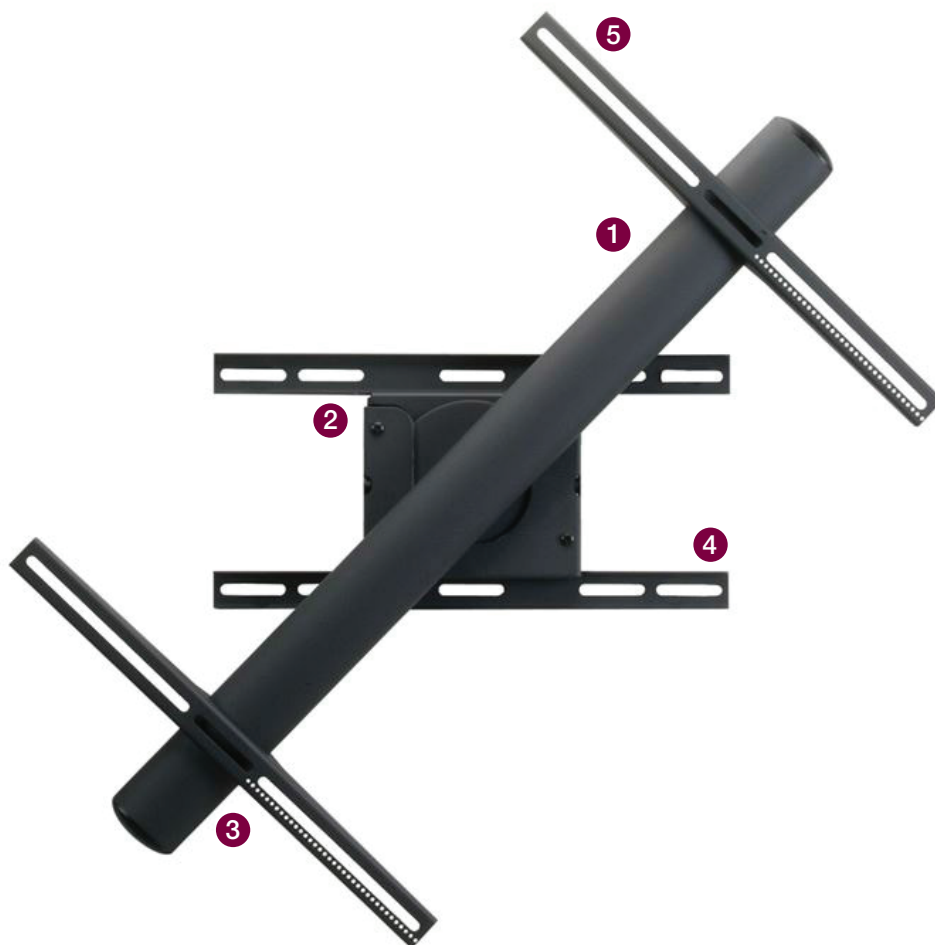
**Weight Capacity: 160 lb. | 73 kg**

## Rotating Mount for Flat-Panels

### Features

- 1 360° rotation to set in portrait or landscape configuration
- 2 Security screw on wall plate prevents flat panel removal
- 3 Signature design adds both aesthetics and rigidity
- 4 Time-saving components allow a quick, three-step installation
- 5 Patented washer “grips” mounting bracket for secure installation

This rotating, universal flat-panel mount holds displays up to 160 lb. It typically fits displays 37 - 63 in. With 360° of continuous rotation, the flat-panel can be displayed in landscape or portrait positions. The two-piece design mounts a mere 3.75 in. from the wall.



# Rotating Mount for Flat-Panels

RFM

## Specifications

**Weight**  
28.2 lb. | 12.79 kg

**Color**  
Black

**Weight Capacity / Mount**  
160 lb. | 72.57 kg

**Mounting Pattern**  
200 x 200 (Min) , 870 x 505 (Max) mm

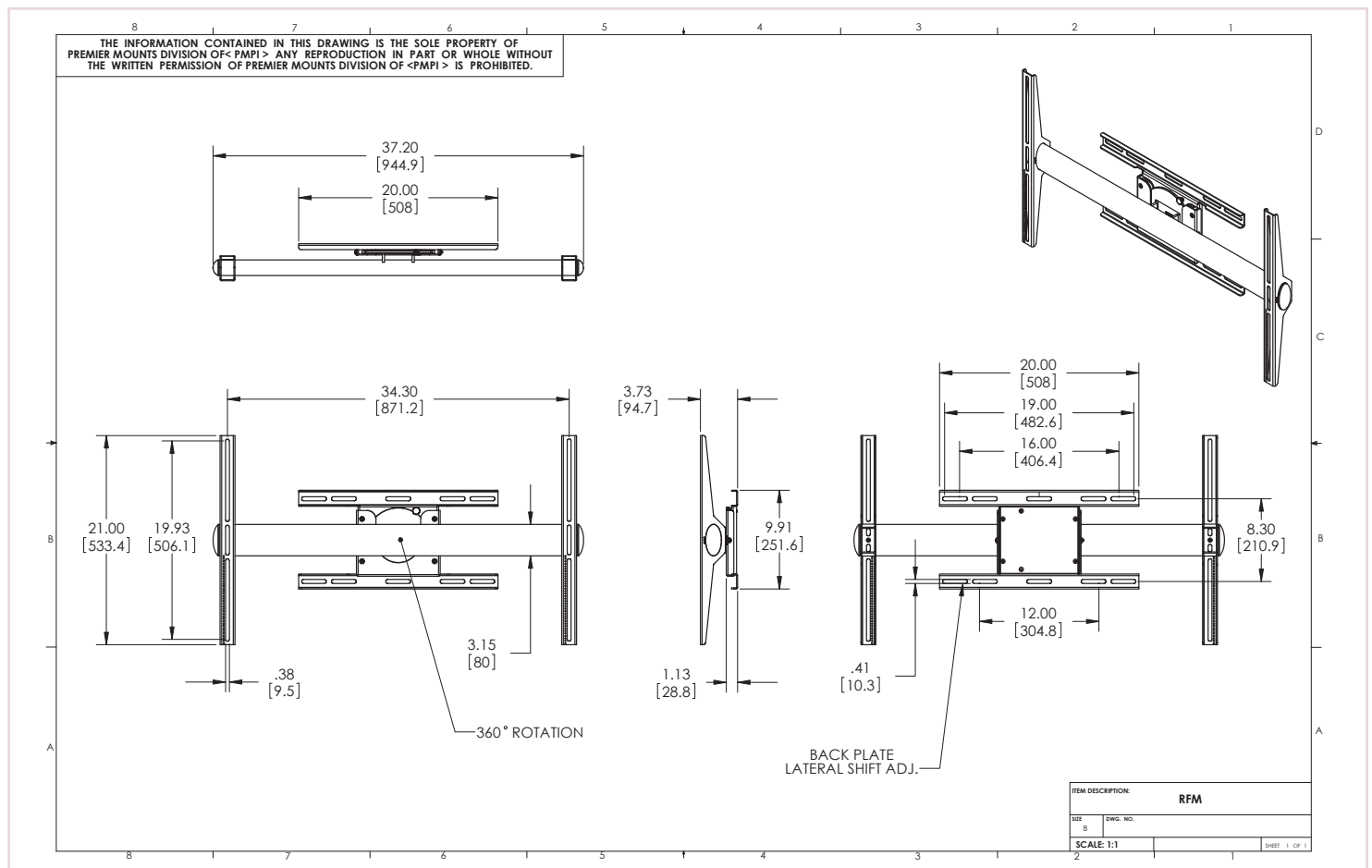
**Width x Height x Depth**  
See Drawing

**Warranty**  
Lifetime

## Packaging

**Width x Height x Depth**  
11.5 in. (wide) x 7 in. (high) x 42.8 in. (deep) | 292.1 mm x 177.8 mm x 1087.12 mm

## Architectural Drawing



Specifications subject to change without notice

T: 800.368.9700 Int'l: +001.714.632.7100

**PREMIER**  
MOUNTS