

LIST \$55.00	Color: Black
Weight	4.00 lb. 1.8 kg
Weight Cap. per Head	50 lb. 22.7 kg
Width	8.88 in. 226 mm
Height	8.88 in. 225.6 mm
Depth	0.82 in. 20.828 mm
Mounting Pattern	75 x 75, 100 x 100, 200 x 100, 200 x 200 mm
Display Range	10.00 - 40.00 in

Downloads at Mounts.com



[Data Sheet](#)



[Bid Specification Document](#)



50 lb.



+8.88



0.82 in



75 x 75



100 x 100



200 x 100



200 x 200



10-40 in

DESCRIPTION

This flat mount's extremely low-profile design holds the flat-panel less than one inch from the display wall. It is ideal for installing flat-panel displays to a wood stud or concrete wall. Its visual centering diamond and visual stud guide make it easy to mount a flat-panel safely and accurately.

FEATURES

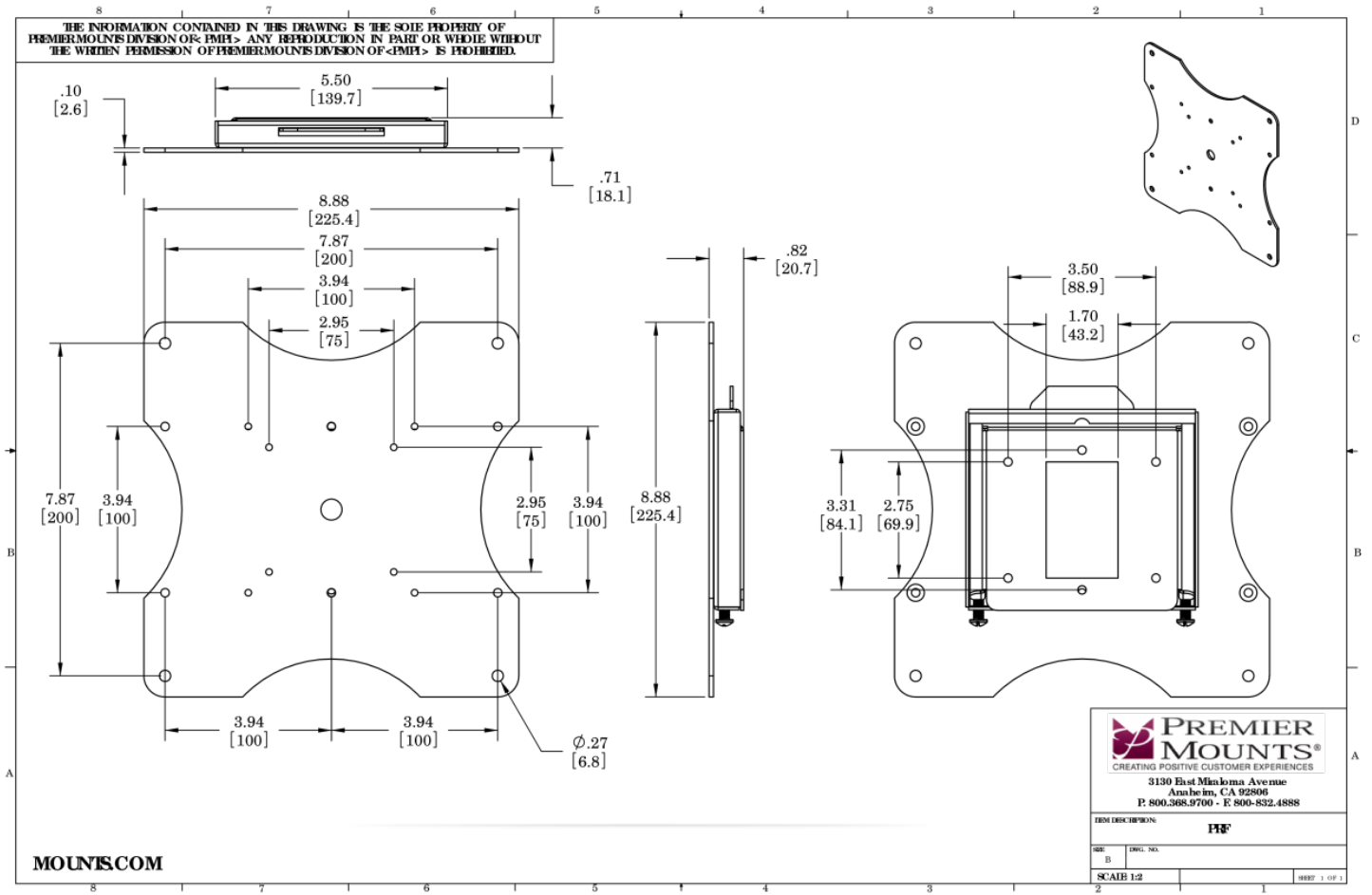
- Low-profile design
- Square footprint is easily hidden behind flat-panel
- Simple two-piece design for fast assembly
- Cutout on the wall plate allows for power or signal receptacle
- Captive screws secure flat-panel to wall plate
- Includes adapter plate to fit mounting patterns up to 200 x 200 mm
- Universal hardware pack includes innovative universal spacers and M4-M10 screws



PRF

Fixed Low-Profile Flat-Panel Mount for Displays up to 50 lb. (22.5 kg)

DOWNLOAD FULL SIZE CAD FILES AND DIMENSIONAL DRAWINGS AT MOUNTS.COM



World Headquarters | 1321 S. State College Blvd., Fullerton, CA 92831 | 800.368.9700 USA | F 800.832.4888 | www.mounts.com

© 2014 PREMIER MOUNTS | Rev.01 | 10.2011