

PCM-MS2

Tilting Flat-Panels Mount for Displays up to 175 lb./79 kg

LIST \$210.00	Color: Black
Weight	21.00 lb. 9.5 kg
Weight Cap. per Head	175 lb. 79.4 kg
Width	28.98 in. 736 mm
Height	21.00 in. 533.4 mm
Depth	2.34 in. 59.436 mm
Mounting Pattern	200 x 200 (Min) - 700 x 500 (Max) mm
Display Range	37.00 - 61.00 in
Tilt	+12.00°

Downloads at Mounts.com



[Data Sheet](#)



[Bid Specification Document](#)



175 lb.



+21.00



+12.00°



2.34 in



200 x 200 min.



700 x 500 max.



37-61 in

DESCRIPTION

This universal flat-panel mount provides flexible mounting options by allowing installation to 16, 18 and 24 in. studs. The innovative Griplate™ anti-slip plate (US Patent 8,035,757 B2) which holds the flat-panel display permanently in its desired position. The PCM wall plate is designed with a wide opening in the center for cable management and placing power outlets. It allows flexibility for pre-installing wiring before determining the exact mounting spot.

FEATURES

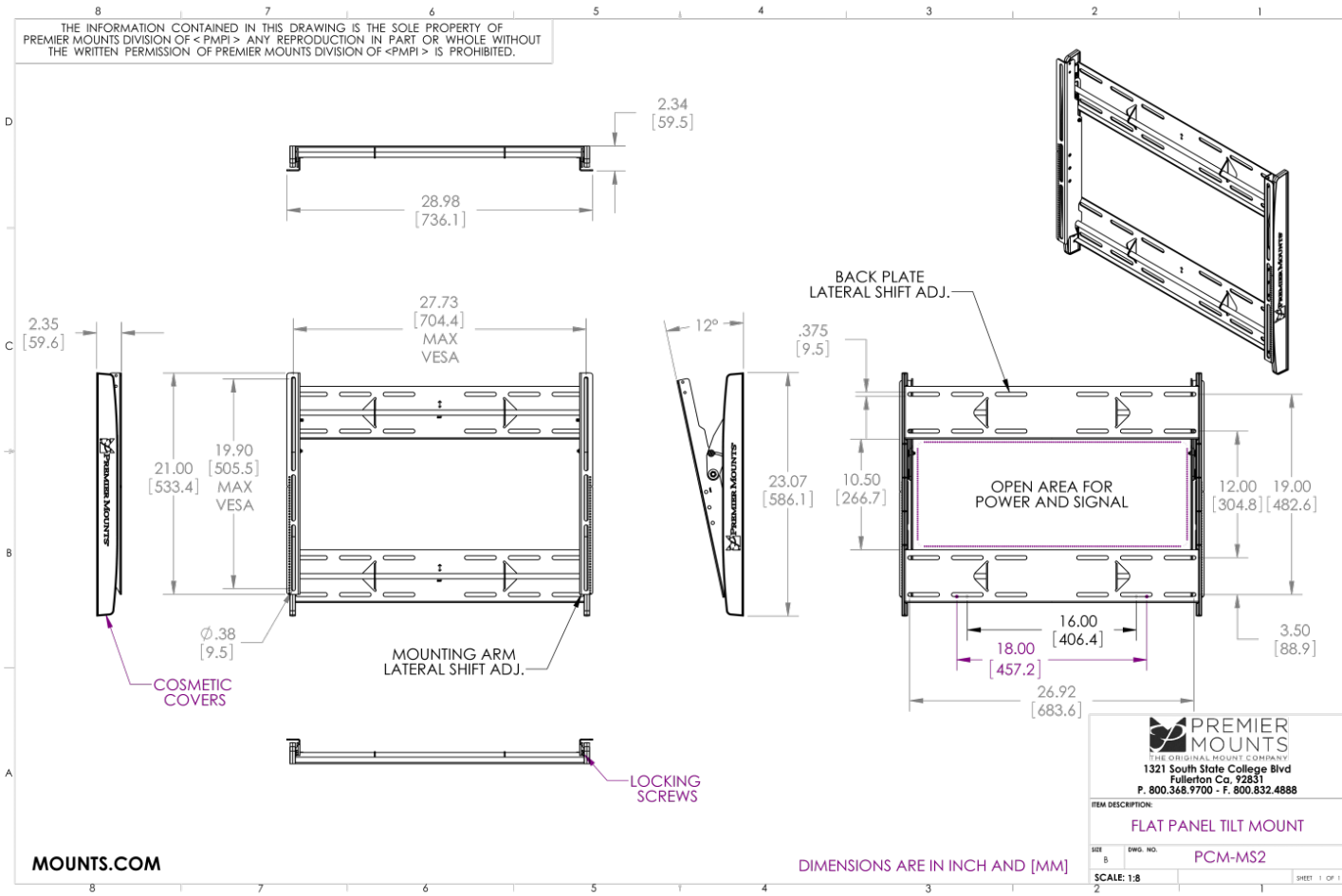
- Open design for easy cable and electrical access
- Side covers aid with wall plate installation while also concealing cables
- Features patented Clevis mounting brackets for effortless tilt
- Built-in lateral shift for precise placement
- Mounts to studs at 16, 18 and 24 in. spacing
- Twelve degrees of continuous tilt
- Patented Griplates™ support flat-panel displays and holds the display tight on its mounting brackets



PCM-MS2

Tilting Flat-Panels Mount for Displays up to 175 lb./79 kg

DOWNLOAD FULL SIZE CAD FILES AND DIMENSIONAL DRAWINGS AT MOUNTS.COM



World Headquarters | 1321 S. State College Blvd., Fullerton, CA 92831 | 800.368.9700 USA | F 800.832.4888 | www.mounts.com

© 2014 PREMIER MOUNTS | Rev.01 | 10.2011