

# PBC-UMS

Universal Projector Mount with Integrated Coupler

LIST \$189.00	Color: Black
Weight	8.00 lb.   3.6 kg
Weight Cap. per Head	40 lb.   18.1 kg
Height	7.08 in.   179.8 mm
Mounting Reach	18.95 in.   481.3 mm
Pitch	+20.00° / -20.00°
Roll	+20.00° / -20.00°
Yaw	+360.00° / -360.00°

Downloads at Mounts.com



Data Sheet



Bid Specification Document

BIM FILES



TXT file



40 lb.



+360.00°  
-360.00°



+20.00°  
-20.00°



+20.00°  
-20.00°



+7.08

## DESCRIPTION

The PBC Series of universal projector mounts fit most projectors weighing up to 40 lb. (18 kg). It includes a standard 1.5 in. NPT coupler and ceiling plate that mounts to a single stud or 4.5 in. bolt pattern. The PBC-UMS offers flexible projector positioning with four patented dual-joint support arms (US Patent number 7,942,375) that can reach almost any mounting point on a projector. It also includes a quick release connector that allows the projector to be installed quickly and then easily released for maintenance, without re-alignment.

## FEATURES

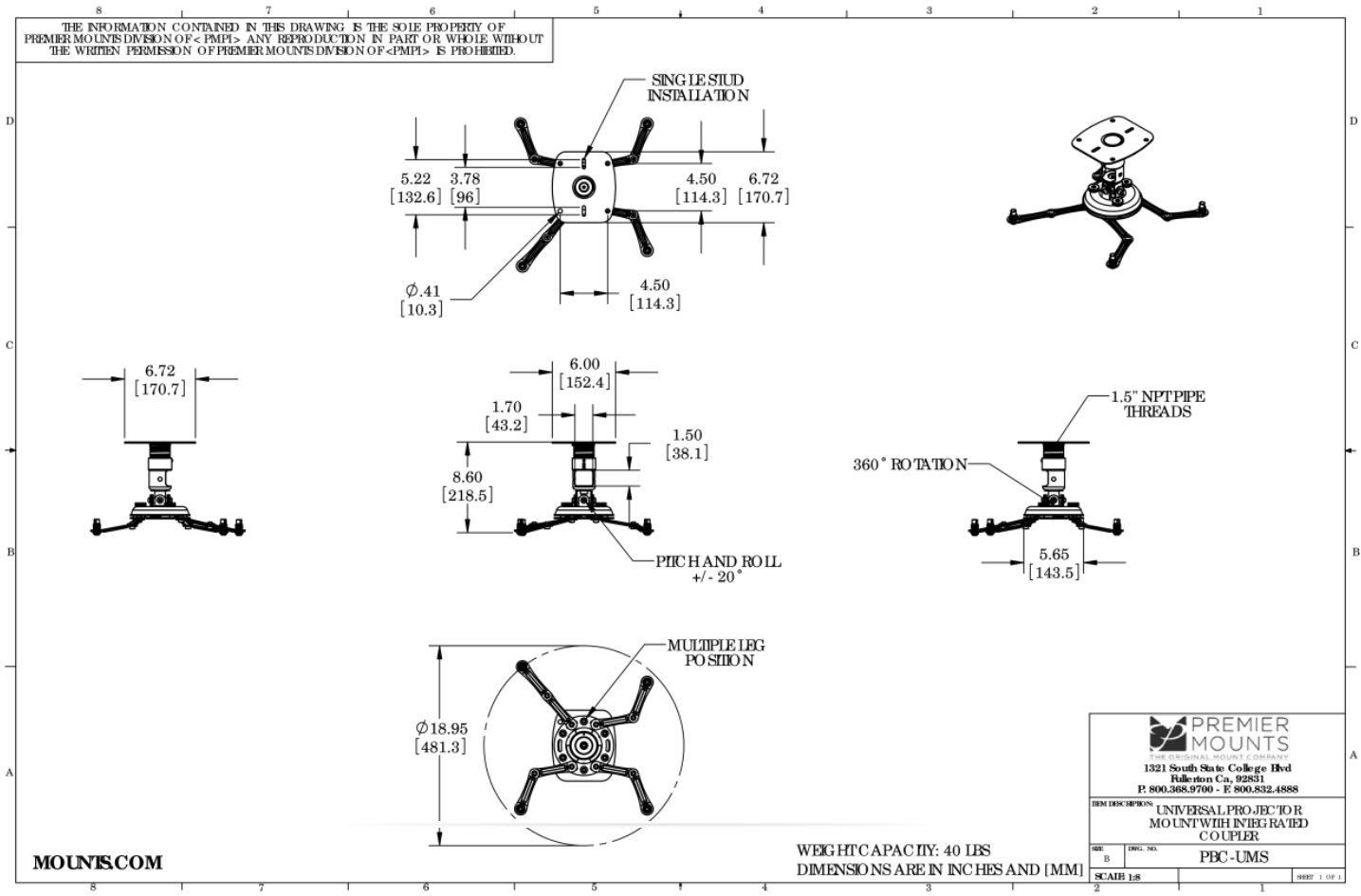
- Includes a standard 1.5 in. NPT coupler
- Cable routing inside pipe
- Rotates 360°
- Includes ceiling plate with threaded 1.5 in. NPT pipe nipple
- Ceiling plate mounts to a single stud or 4.5 in. bolt pattern
- Four dual-joint support arms with Lock-It™ security leveling barrels for greater protection
- Gyrolock™ quick installation connector



PBC-UMS

Universal Projector Mount with Integrated Coupler

DOWNLOAD FULL SIZE CAD FILES AND DIMENSIONAL DRAWINGS AT MOUNTS.COM



World Headquarters | 1321 S. State College Blvd., Fullerton, CA 92831 | 800.368.9700 USA | F 800.832.4888 | [www.mounts.com](http://www.mounts.com)

© 2013 PREMIER MOUNTS | Rev.01 | 10.2011