

P5080F

Low-Profile Mount for Flat-Panels up to 300 lb./136 kg

LIST \$189.00	Color: Black
Weight	18.00 lb. 8.2 kg
Weight Cap. per Head	300 lb. 136.1 kg
Width	45.21 in. 1148 mm
Height	28.35 in. 720.1 mm
Depth	0.96 in. 24.384 mm
Mounting Pattern	200 x 200 (Min) - 1110 x 705 (Max) mm
Display Range	50.00 - 80.00 in

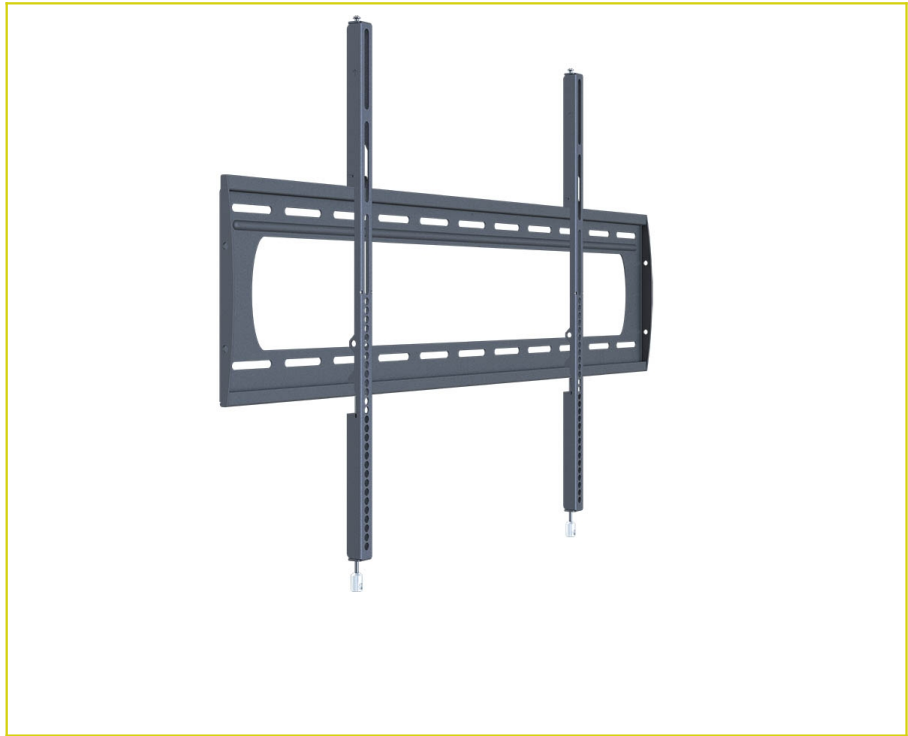
Downloads at Mounts.com



[Data Sheet](#)



[Bid Specification Document](#)



300 lb.



+28.35



0.96 in



200 x 200 min.



1110 x 705 max.



50-80 in

DESCRIPTION

The P5080F is a low-profile flat mount for flat-panels up to 300 lb. Typically fits displays ranging from 50 - 80 in. or with a mounting pattern of 200 x 200mm to 1110 x 705mm. It features post-installation leveling, lateral alignment, locking security barrels, and an open mounting frame for easy access to power sources and cables.

FEATURES

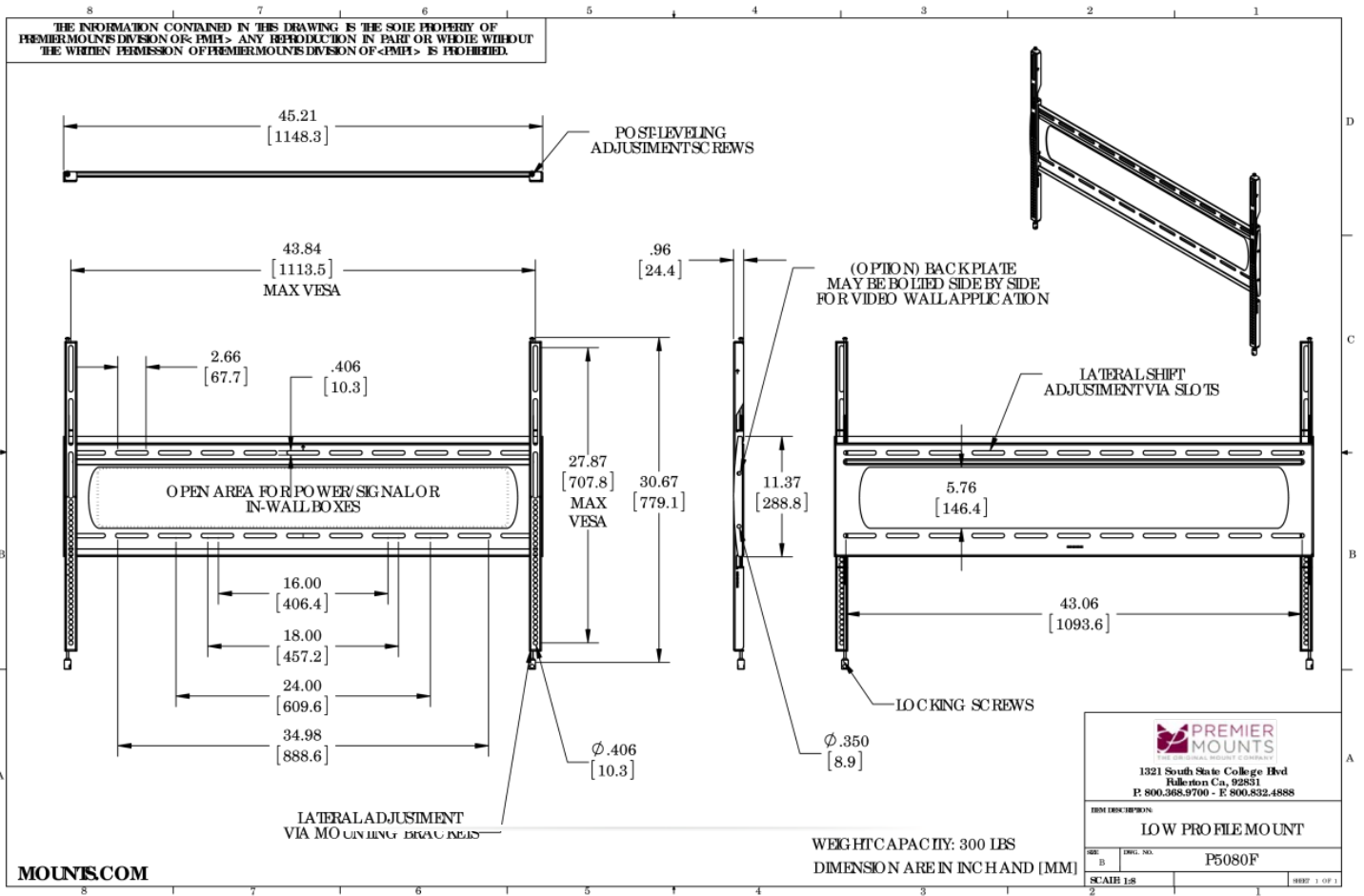
- Holds flat-panel less than 1 in. from the wall
- Post-installation leveling system
- Open design for easy cable and electrical access
- Built-in lateral shift
- Lock-It™ security barrel included
- Mounting kit includes wood, concrete and steel stud attachment hardware



P5080F

Low-Profile Mount for Flat-Panels up to 300 lb./136 kg

DOWNLOAD FULL SIZE CAD FILES AND DIMENSIONAL DRAWINGS AT MOUNTS.COM



World Headquarters | 1321 S. State College Blvd., Fullerton, CA 92831 | 800.368.9700 USA | F 800.832.4888 | www.mounts.com

© 2014 PREMIER MOUNTS | Rev.01 | 10.2011