

P4263TP

Low-Profile Tilting Portrait Mount for Flat-Panels up to 175 lb.

LIST \$200.00	Color: Black
Weight	15.06 lb. 6.8 kg
Weight Cap. per Head	175 lb. 79.4 kg
Width	22.41 in. 569 mm
Height	28.35 in. 720.1 mm
Depth	2.00 in. 50.8 mm
Mounting Pattern	200 x 200 (Min) - 525 x 700 (Max) mm
Display Range	42.00 - 63.00 in
Tilt	+8.00°

Downloads at Mounts.com



[Data Sheet](#)



[Bid Specification Document](#)



175 lb.



+28.35



+8.00°



2.00 in



200 x 200 min.



525 x 700 max.



42-63 in

DESCRIPTION

The P4263TP is a low-profile tilting portrait mount for flat-panels up to 175 lb. Typically fits displays ranging from 42 - 63 in. or with a mounting pattern of 200 x 200mm to 525 x 700mm. It features post-installation leveling, lateral alignment, locking security barrels, and an open mounting frame for easy access to power sources and cables.

FEATURES

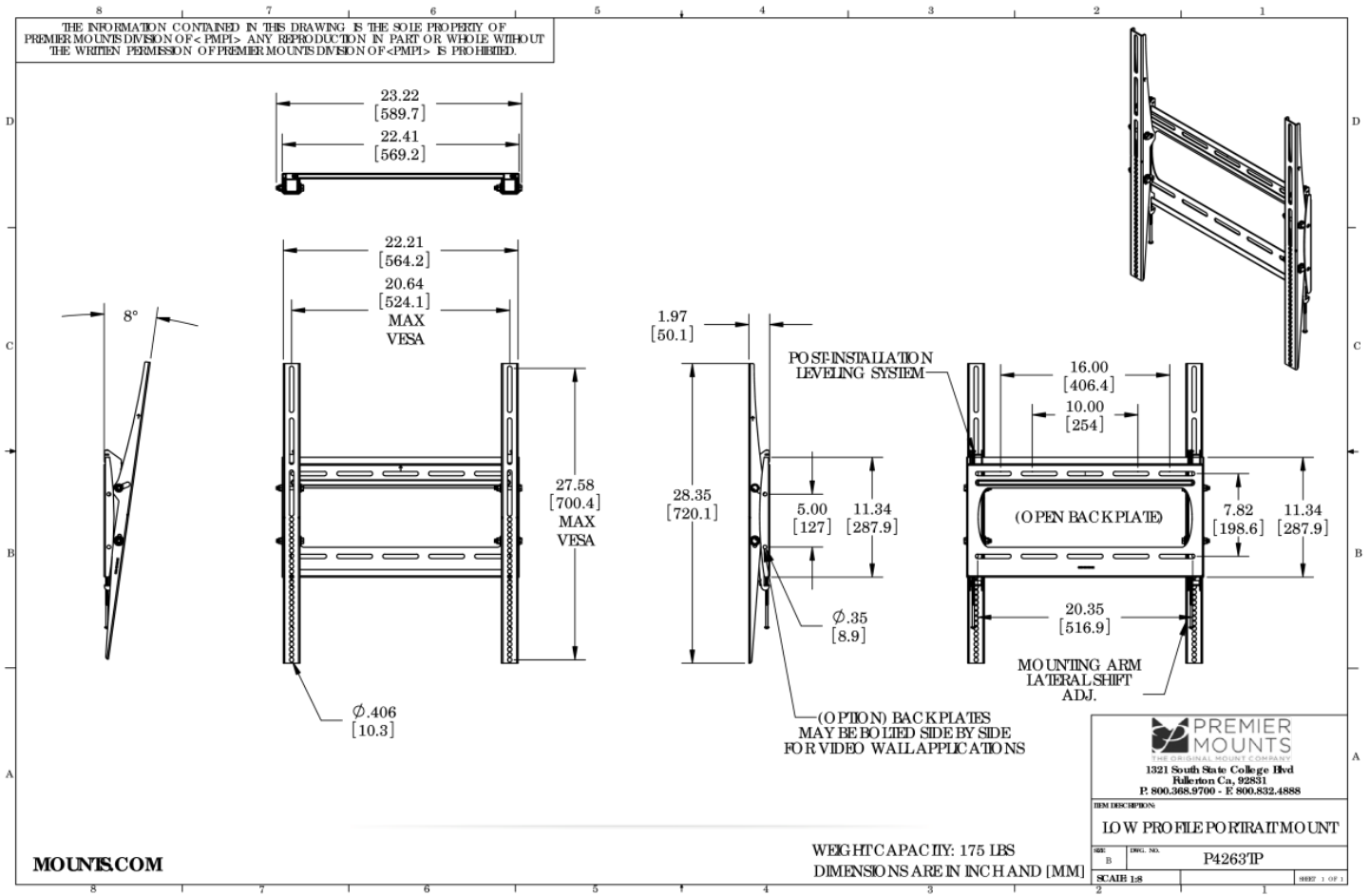
- Holds flat-panel in portrait orientation 2 in. from the wall
- 8° of continuous downward tilt
- Open design for easy cable and electrical access
- Mounting kit includes wood, concrete and steel stud attachment hardware
- Built-in lateral shift and post-installation leveling system



P4263TP

Low-Profile Tilting Portrait Mount for Flat-Panels up to 175 lb.

DOWNLOAD FULL SIZE CAD FILES AND DIMENSIONAL DRAWINGS AT MOUNTS.COM



World Headquarters | 1321 S. State College Blvd., Fullerton, CA 92831 | 800.368.9700 USA | F 800.832.4888 | www.mounts.com

© 2014 PREMIER MOUNTS | Rev.01 | 10.2011