

# P4263FP

Low-Profile Flat Portrait Mount for Flat-Panels up to 175 lb./80kg

LIST \$150.00	Color: Black
Weight	12.22 lb.   5.5 kg
Weight Cap. per Head	175 lb.   79.4 kg
Width	22.41 in.   569 mm
Height	29.22 in.   742.2 mm
Depth	0.96 in.   24.384 mm
Mounting Pattern	200 x 200 (Min) - 535 x 705 (Max) mm
Display Range	42.00 - 63.00 in

Downloads at Mounts.com

[BID SPEC](#)



[Data Sheet](#)



[Bid Specification Document](#)



175 lb.



+29.22



0.96 in



200 x  
200 min.



535 x  
705 max.



42-63 in

## DESCRIPTION

The P4263FP is a low-profile flat portrait mount for flat-panels up to 175 lb. Typically fits displays ranging from 42 - 63 in. or with a mounting pattern of 200 x 200 mm to 535 x 705 mm. It features post-installation leveling, lateral alignment, locking security barrels, and an open mounting frame for easy access to power sources and cables.

## FEATURES

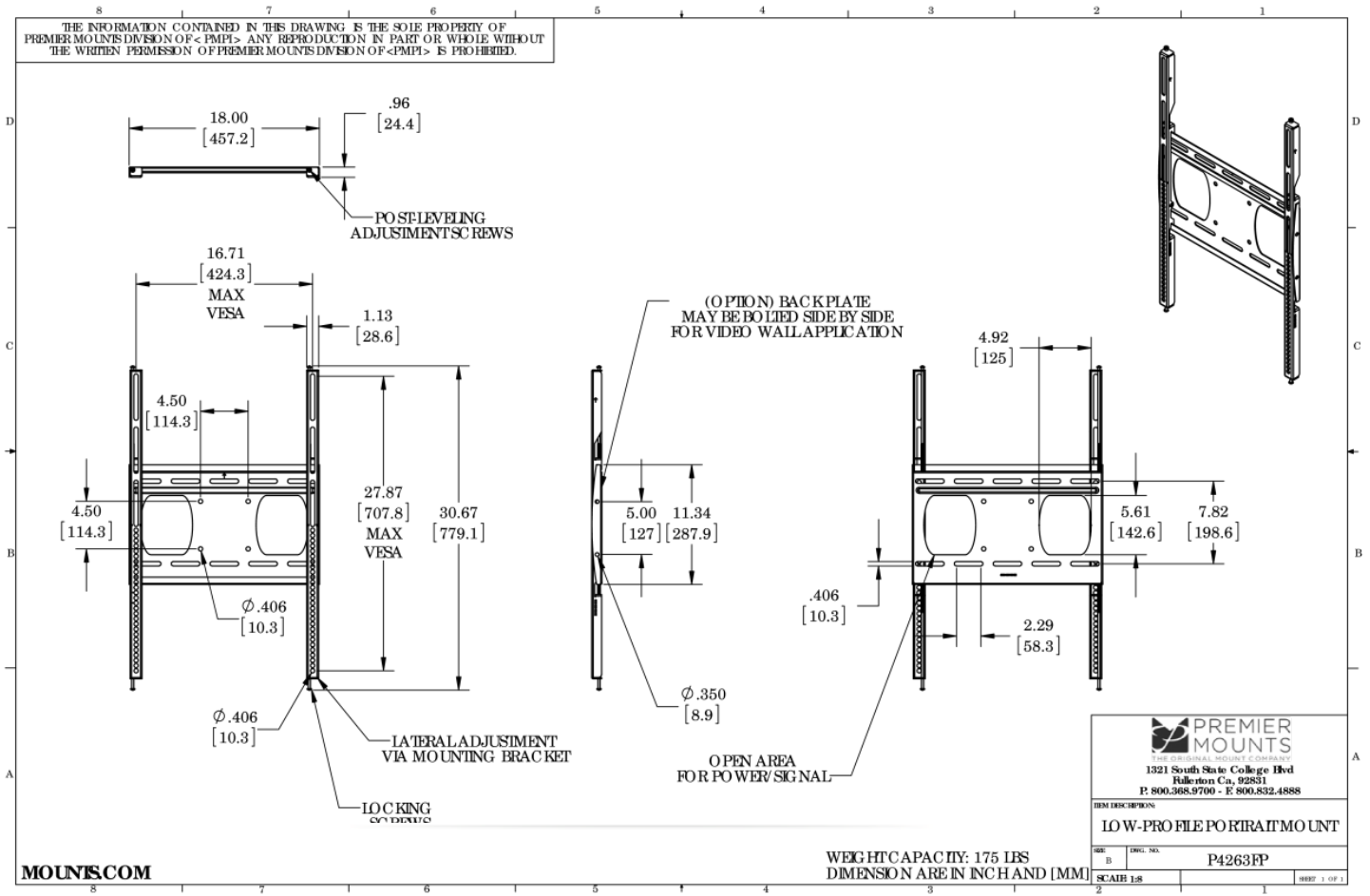
- Holds flat-panel in portrait orientation less than one inch from the wall
- Post-installation leveling system
- Open design for easy cable and electrical access
- Mounting kit includes wood, concrete and steel stud attachment hardware
- Built-in lateral shift

**LIFETIME  
WARRANTY**

# P4263FP

Low-Profile Flat Portrait Mount for Flat-Panels up to 175 lb./80kg

DOWNLOAD FULL SIZE CAD FILES AND DIMENSIONAL DRAWINGS AT MOUNTS.COM



World Headquarters | 1321 S. State College Blvd., Fullerton, CA 92831 | 800.368.9700 USA | F 800.832.4888 | www.mounts.com

© 2014 PREMIER MOUNTS | Rev.01 | 10.2011