

Weight Capacity: 270 lb. | 122.47 kg

Flat-Panel Lift with Floating Lid for Displays up to 270 lb.

### Features

- 1 Comes with electronic actuator for electronic movement
- 2 Securely holds flat-panel displays up to 260 lbs
- 3 Wide range of VESA patterns for all display sizes
- 4 Display can be stored in a discreet cabinet

Description of the L360F - The L360F is a solution for those who want to have a digital display ready to use at their disposal while still maintaining a clean overall look of their room. The digital display sits within a cabinet unit and can be raised with the help of an electronic actuator. The mount within the L360F can support displays weighing up to 260 lbs and has a wide range of VESA mounting patterns that can be used for almost any sized flat-panel display. The L360F is the perfect solution for company meeting rooms of any size and classrooms for students of all ages.



# Flat-Panel Lift with Floating Lid for Displays up to 270 lb.

## L360F

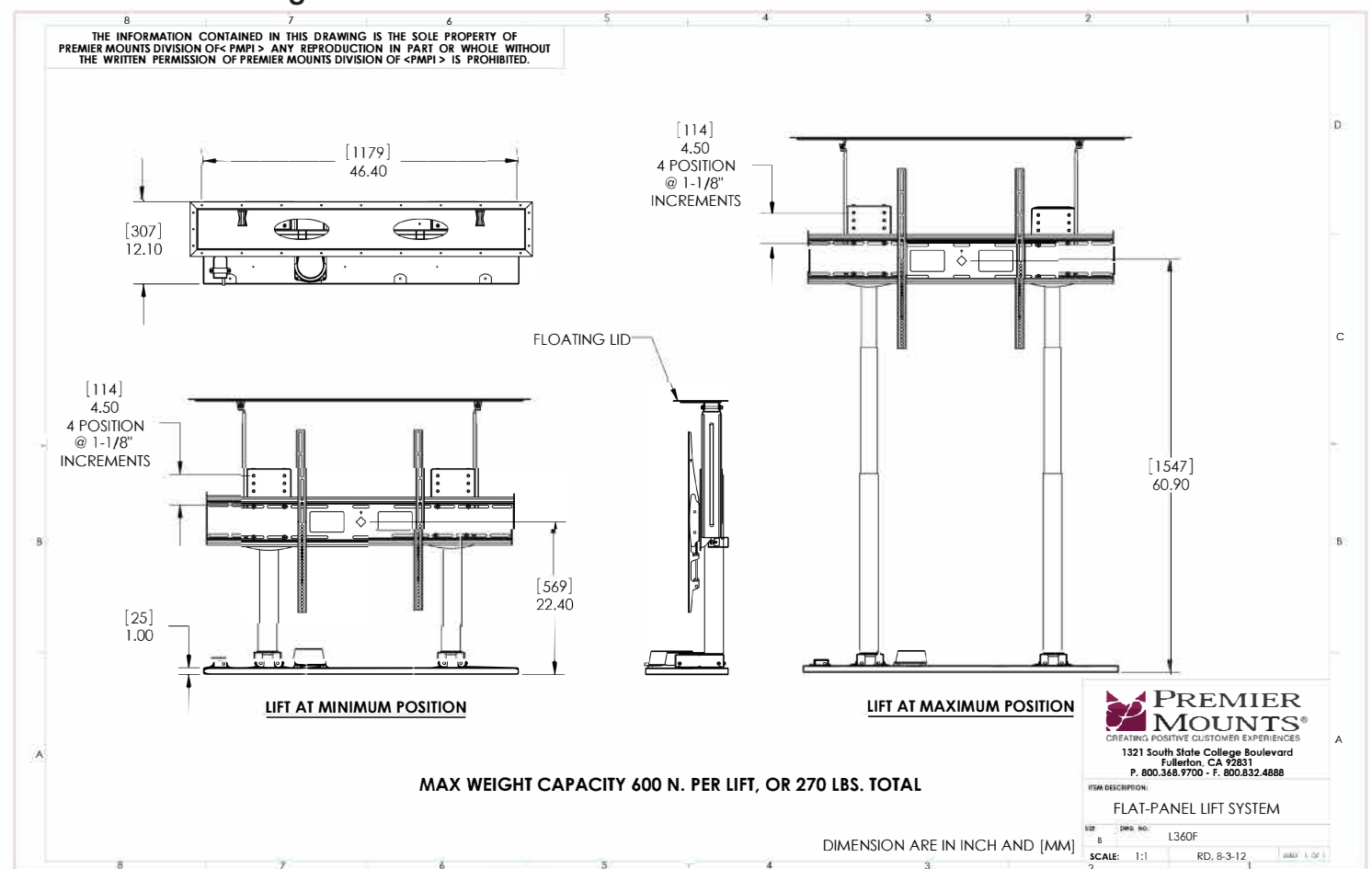
### Specifications

Weight	Color	Weight Capacity / Mount	Mounting Pattern
140 lb.   63.50 kg	White and Black	270 lb.   122.47 kg	200 x 200 (Min) , 1100 x 650 (Max) mm
Width x Height		Warranty	
44.79 in. x 26.17 in.   1137.67 mm x 664.72 mm		Lifetime	

### Packaging

Specialized Packing	Contents
Made for L360F	Mount (x1), Electronic Actuator (x1), Cabinet Structure

### Architectural Drawing



Specifications subject to change without notice

T: 800.368.9700 Int'l: +001.714.632.7100

**PREMIER**  
MOUNTS