

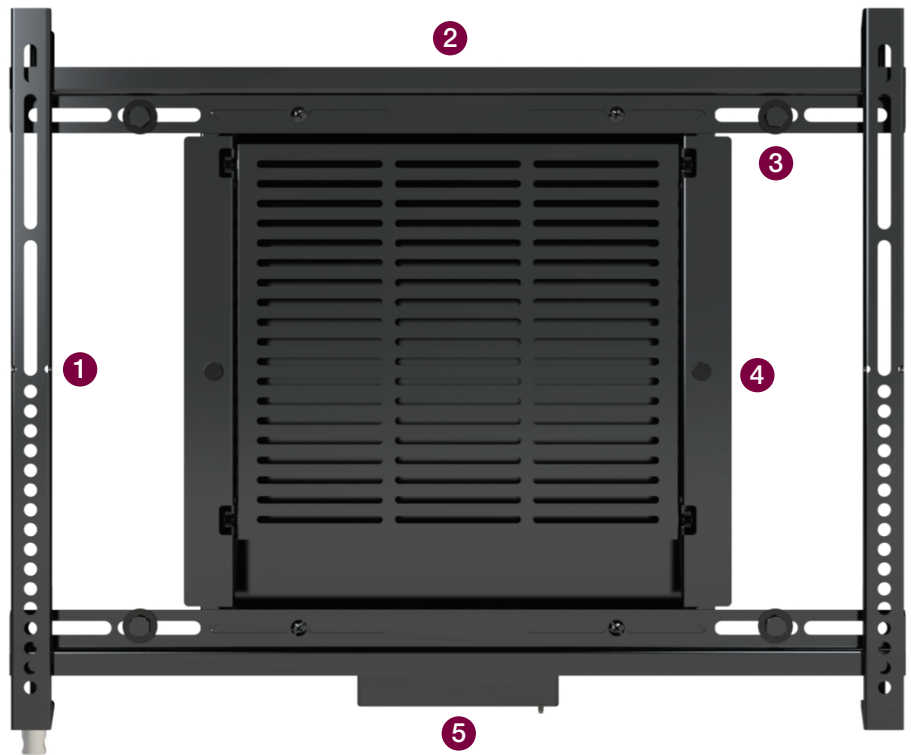
Weight Capacity: 75 lbs | 34.02 kg

In Wall Box with Build-In Flat Panel Mount

Features

- 1 ADA compliant mounting solution
- 2 Holds up to 75 lbs
- 3 Includes lateral shift locking screws and post leveling screws
- 4 Several knockouts ranging from 1/2" to 1-1/4" in size
- 5 Removable plate for media player storage

The INW-UNIFM is a combination product that includes an in-wall box and a flat panel mount all in one. The mounting brackets that connect to the in-wall box channel sit only 1.08 inches off the wall making it ADA compliant. This is important if placed in a high traffic location, such as an education or retail environment. The mounting brackets can hold displays up to 75 lbs and include lateral shift locking screws to avoid unwanted movement and post leveling screws to ensure the display is level after installation. The in-wall box portion of the INW-UNIFM has several electrical knockouts ranging from 1/2" to 1-1/4" in size. In addition, the in-wall box includes a removable equipment rack that makes it easy to connect cables or media players to and a power box with universal plug-ins.



In Wall Box with Build-In Flat Panel Mount

INW-UNIFM

Specifications

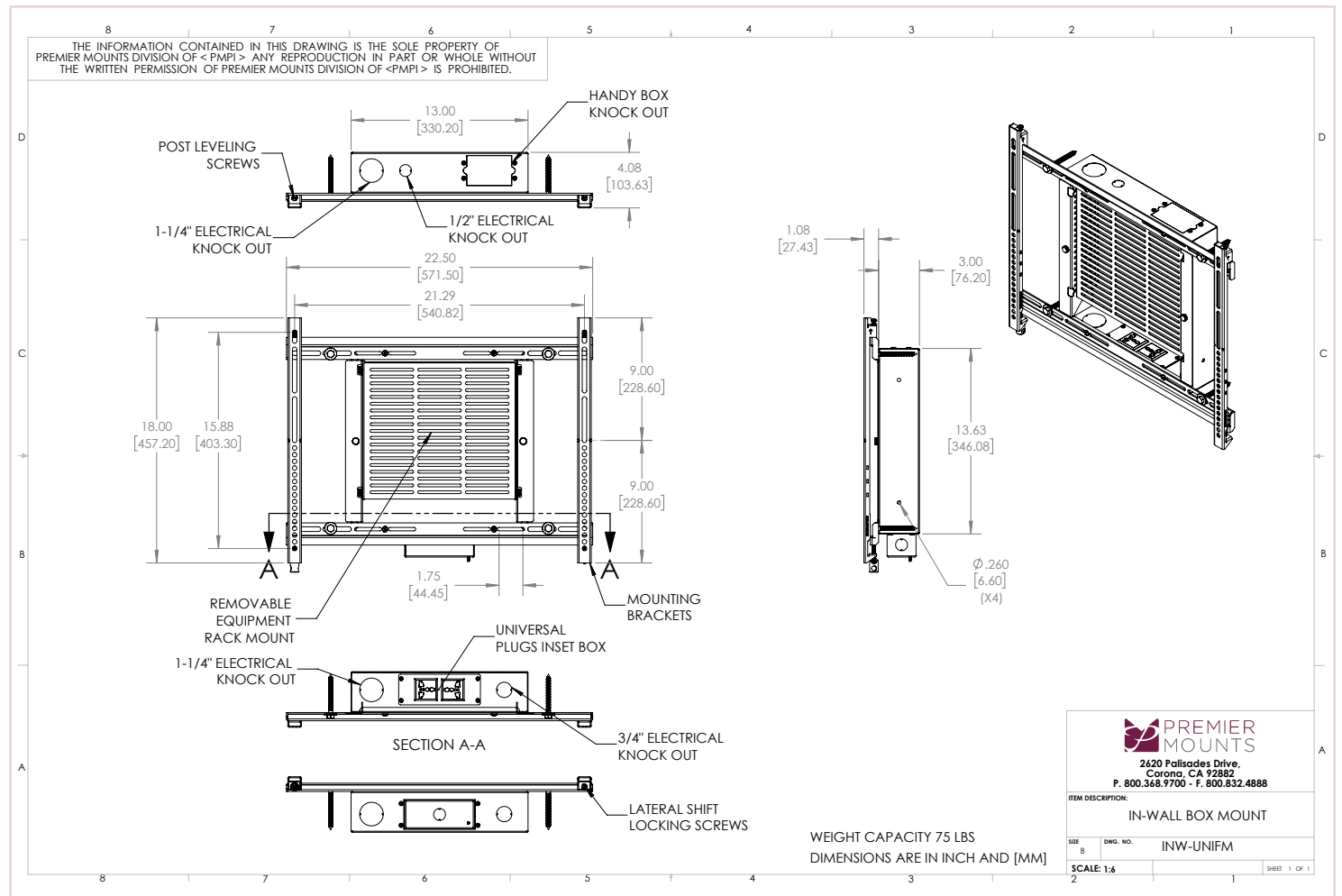
Weight 17 lbs 7.71 kg	Color Black	Weight Capacity / Mount 75 lbs 34.02 kg	Mounting Pattern 100 x 100 mm (Min) x 400 x 400 mm (Max)
Width x Height x Depth 22.5 in. x 18 in. x 4.08 in 571.5 mm x 457.2 mm x 103.632 mm			Warranty Lifetime

Packaging

Contents

Mount (x1), Universal Hardware Pack (x1), Instruction Manual (x1)

Architectural Drawing



Specifications subject to change without notice

T: 800.368.9700 Int'l: +001.714.632.7100

