

ECM-D70T

Ceiling Mount for Dual Flat-Panels up to 46 inch

LIST \$499.00	Color: Black
Weight Cap. per Head	175 lb. 79.4 kg
Width	37.20 in. 945 mm
Height	21.60 in. 548.6 mm
Mounting Pattern	200 x 200 (Min) - 875 x 505 (Max) mm
Display Range	40.00 - 46.00 in
Tilt	+15.00° / -15.00°
Rotation	+360°
Plate Size	2.00 in. (wide) 51

Downloads at Mounts.com



[Data Sheet](#)



[Bid Specification Document](#)



175 lb.



+21.60



+15.00°
-15.00°



200 x
200 min.



875 x
505 max.



40-46 in

DESCRIPTION

The ECM-D70T ceiling mount fits dual flat-panels up to 50 in. in either portrait or landscape orientation. It offers dynamic viewing with 360° swivel and 15° of tilt. The mount's ultra-thin design keeps the center of gravity close to the flat-panels for better balance. Integrated cable management keeps the installation clean and organized. Optional brackets are available for attaching mini PCs and digital media players and servers. The ECM-D70T fits a 2 in. NPT extension pipe.

FEATURES

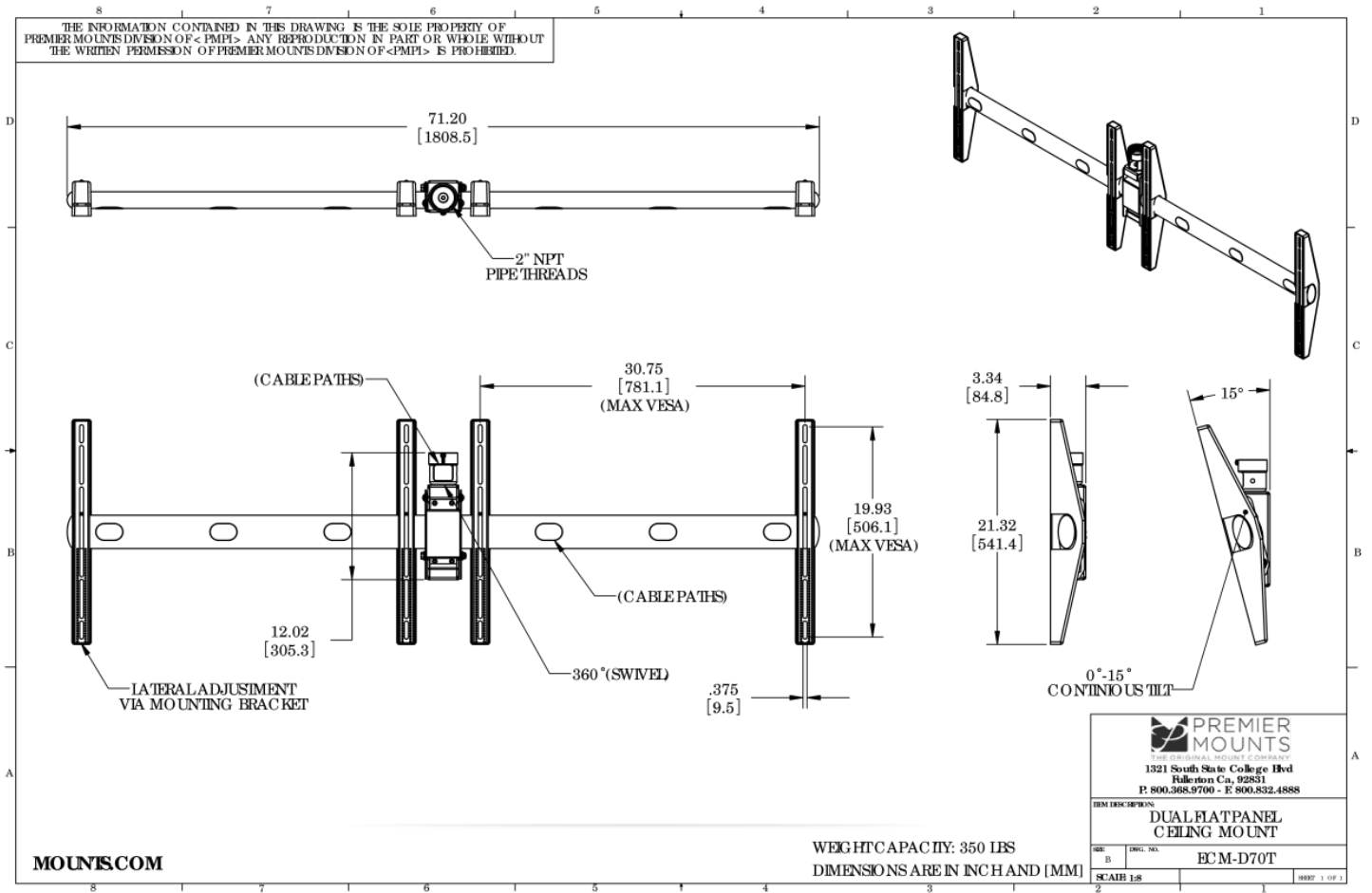
- 15° of tilt facilitates strategic placement of the flat-panel
- Holds two flat-panel displays up to 46" each in portrait or landscape orientation
- 360° swivel with 2" NPT coupler
- Integrated cable management
- Optional brackets for mini PCs and digital media players/servers



ECM-D70T

Ceiling Mount for Dual Flat-Panels up to 46 inch

DOWNLOAD FULL SIZE CAD FILES AND DIMENSIONAL DRAWINGS AT MOUNTS.COM



World Headquarters | 1321 S. State College Blvd., Fullerton, CA 92831 | 800.368.9700 USA | F 800.832.4888 | www.mounts.com

© 2014 PREMIER MOUNTS | Rev.01 | 10.2011