

ECM-3763D

Back-to-Back Ceiling Mount for Flat-Panels up to 350 lb./159 kg

LIST \$750.00	Color: Black
Weight	65.00 lb. 29.5 kg
Weight Cap. per Head	175 lb. 79.4 kg
Width	37.20 in. 945 mm
Height	21.60 in. 548.6 mm
Mounting Pattern	200 x 200 (Min) - 875 x 505 (Max) mm
Display Range	37.00 - 63.00 in
Tilt	+15.00° / -15.00°
Swivel	360°

Downloads at Mounts.com



[Data Sheet](#)



[Bid Specification Document](#)



175 lb.



+21.60



+15.00°
-15.00°



200 x
200 min.



875 x
505 max.



37-63 in

DESCRIPTION

The ECM-3763D suspends two back-to-back displays from the ceiling and adapts to 2 in. NPT. No adapters are required for mounting so installation is fast and easy. Center support has mounting points for electrical J-box (not included). Each mounting bracket can hold a flat-panel up to 175 lb.

FEATURES

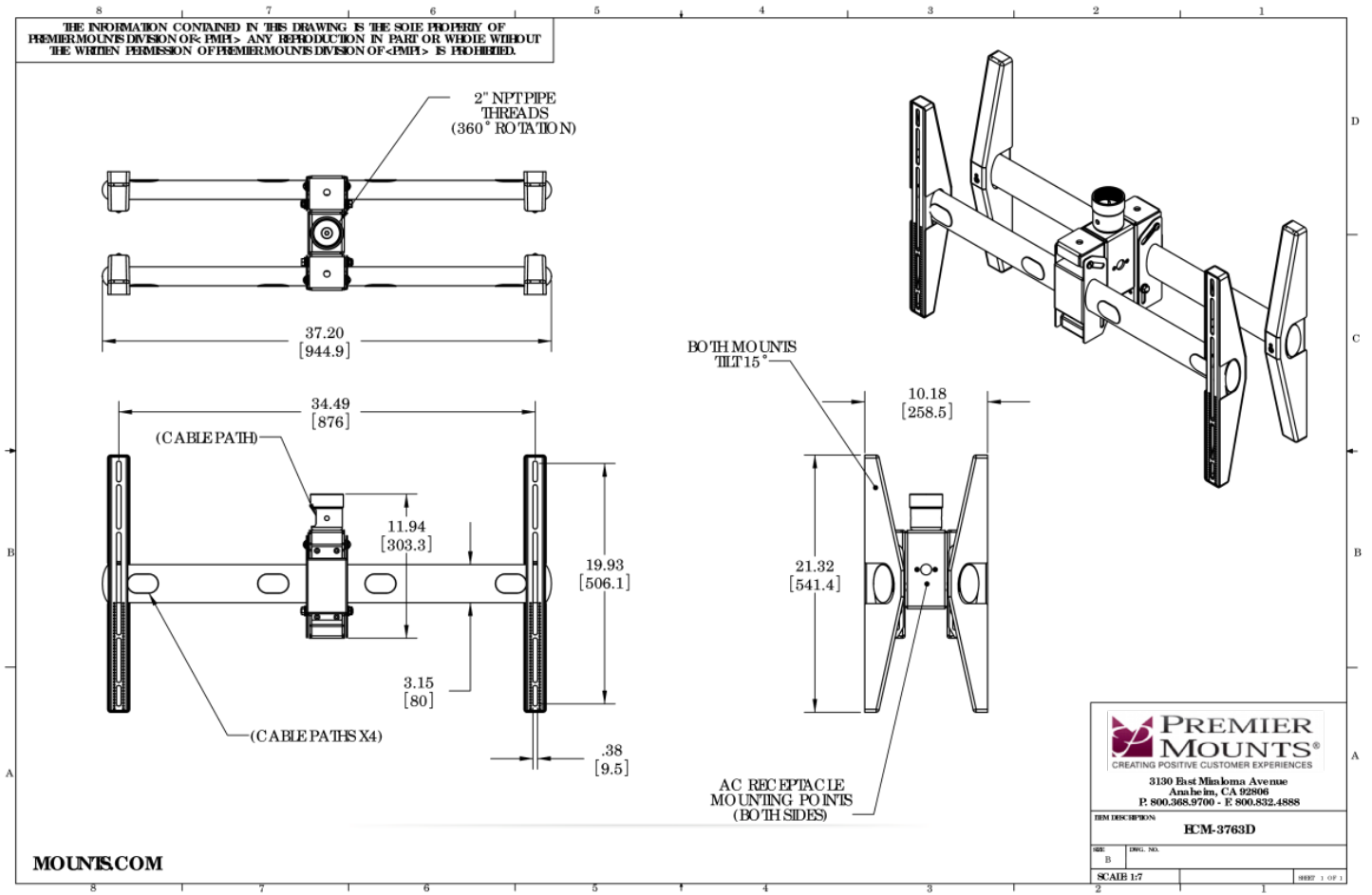
- Supports two flat-panels back-to-back
- Center support features mounting points to receive J-box for power or A/V (not included)
- Integrated cable management keeps installation clean and organized
- Works with optional brackets for mini PCs and digital media player adapters
- Mount displays right out of the box - no adapters needed
- Suspends from ceiling with 2 in. NPT pipe (not included)
PP-6 or PP-6A Ceiling adapters



ECM-3763D

Back-to-Back Ceiling Mount for Flat-Panels up to 350 lb./159 kg

DOWNLOAD FULL SIZE CAD FILES AND DIMENSIONAL DRAWINGS AT MOUNTS.COM



World Headquarters | 1321 S. State College Blvd., Fullerton, CA 92831 | 800.368.9700 USA | F 800.832.4888 | www.mounts.com

© 2014 PREMIER MOUNTS | Rev.01 | 10.2011