

PTM

Single stud Tilt and Pivot Mount for Flat-Panel up to 50 lb.

LIST \$72.00	Color: Silver
Weight	7.00 lb. 3.2 kg
Weight Cap. per Head	50 lb. 22.7 kg
Width	8.88 in. 226 mm
Height	9.50 in. 241.3 mm
Depth	2.84 in. 72.136 mm
Mounting Pattern	75 x 75, 100 x 100, 200 x 100, 200 x 200 mm
Display Range	10.00 - 40.00 in
Tilt	+15.00° / -15.00°
Rotation	+360°
Pitch	+15.00° / -15.00°

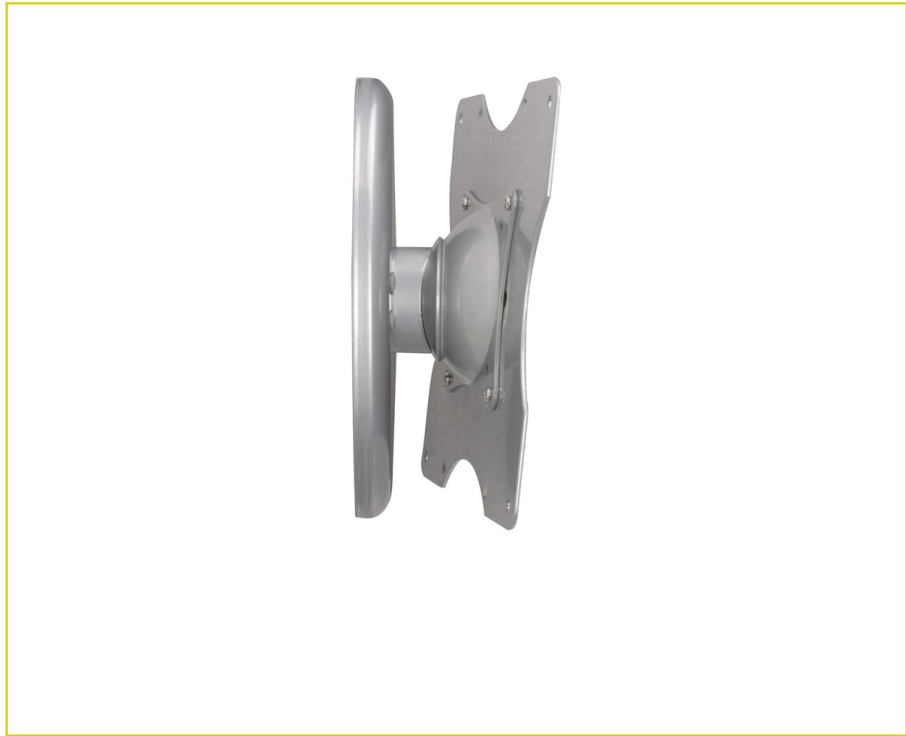
Downloads at Mounts.com



Data Sheet



Bid Specification Document



50 lb.



+15.00°
-15.00°



+9.50



+15.00°
-15.00°



2.84 in



75 x 75



100 x 100



200 x 100



200 x 200



10-40 in

DESCRIPTION

The PTM pivot and tilt mount holds flat-panel mounts up to 50 lb. and can be installed to either to a single stud or concrete surface. The wall mount offers smooth and continuous adjustment with Radial Glide™. It comes with cable routing holes to routed cables directly into the wall for a clean appearance. OSHPD approved and UL listed. The PTM accommodates displays with mounting patterns from 75 x 75 mm to 200 x 200 mm.

FEATURES

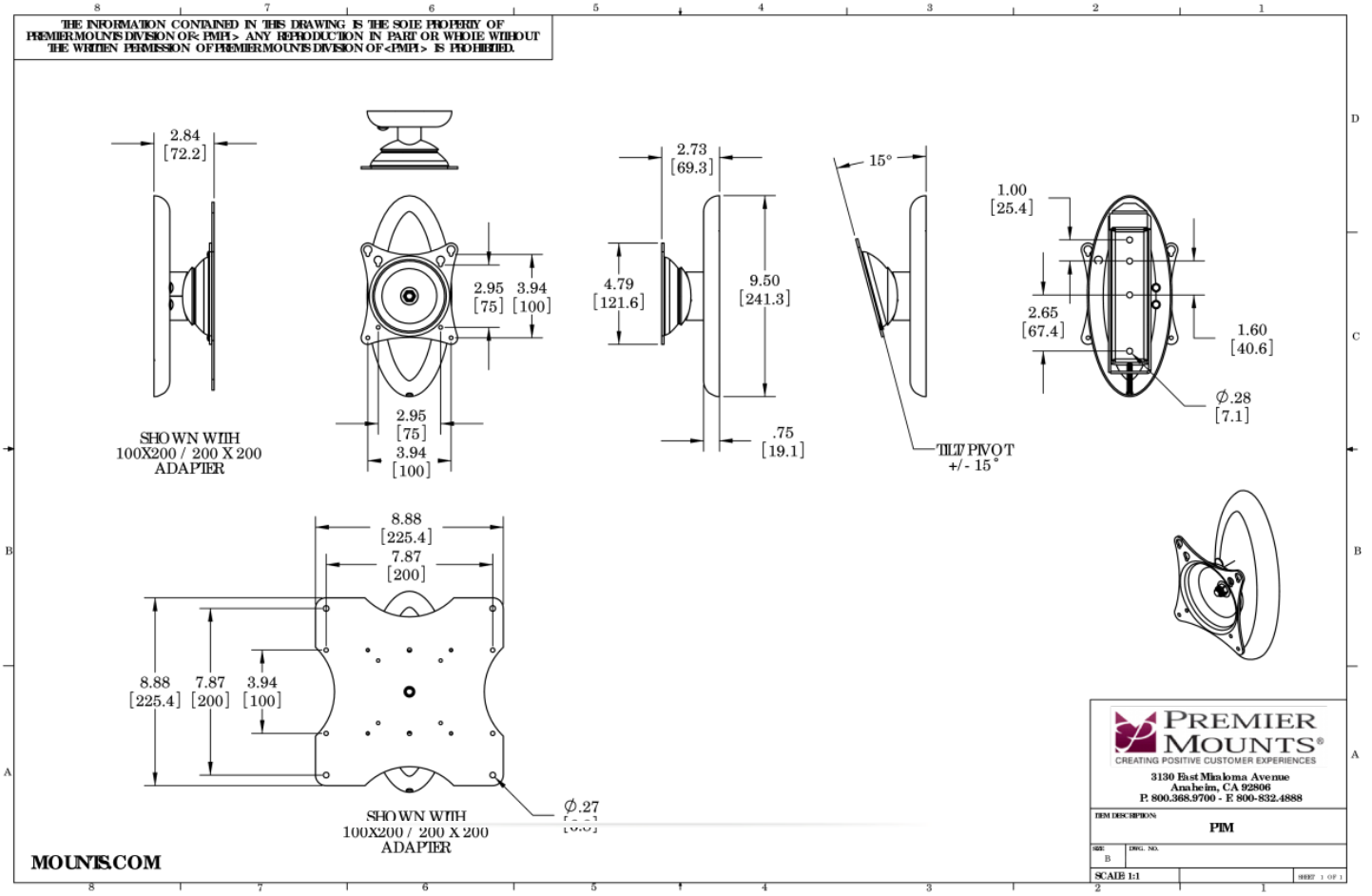
- Radial Glide™ provides smooth continuous tilt, pivot and rotation adjustments
- 360° screen rotation
- Elliptical back plate design combines sturdiness with an aesthetically pleasing design
- Set screws secure flat-panel to wall plate
- OSHPD and DSA Approved (OPA-1680)



PTM

Single stud Tilt and Pivot Mount for Flat-Panel up to 50 lb.

DOWNLOAD FULL SIZE CAD FILES AND DIMENSIONAL DRAWINGS AT MOUNTS.COM



World Headquarters | 1321 S. State College Blvd., Fullerton, CA 92831 | 800.368.9700 USA | F 800.832.4888 | www.mounts.com

© 2014 PREMIER MOUNTS | Rev.01 | 10.2011