






Examine all packaging material for small parts that may have come loose during shipment. Periodic checks are recommended to insure that all components are in proper position, tight and free from damage. Keep this assembly instruction for future reference. Adult assembly is required. The product of Hillsdale Furniture, LLC is designed for residential use only. Customer Service Phone Number: 502-562-0000

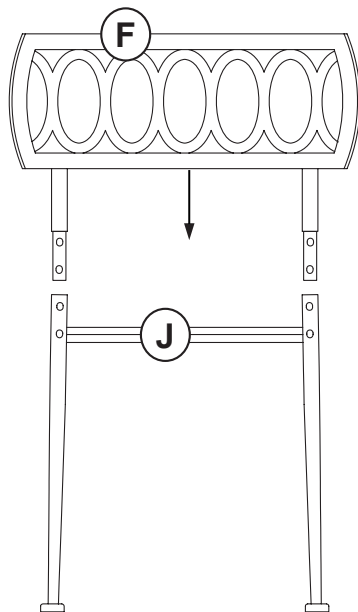
HARDWARE LIST

- A (4) Allen Bolts 1/4" x 1/2"
- B (12) Allen Bolts 1/4" x 3/4"
- C (12) Flat Washers
- D (8) Spring Washers
- E (1) Allen Wrench

PARTS LIST

- F (1) Back Panel
- G (1) Seat Frame
- H (1) Cross Brace
- I (2) Front Legs
- J (1) Back Leg Panel
- K (1) Seat Cushion

PART	QTY	HARDWARE	PART	QTY	HARDWARE
A	4		B	12	
C	12		D	8	
E	1				


FIGURE 1

STEP 1 - Figure 1

Begin assembly by inserting Back Panel (F) into Back Leg Panel (J) making sure to line up holes.

STEP 2 - Figure 2

Attach Seat Frame (G) to Back Panel (F) by aligning the open holes and securing with 4 Allen Bolts (B), 4 Spring Washers (D), & 4 Flat Washers (C) to secure each in place. Do not tighten bolts for this step.

STEP 3 - Figure 2

Attach Cross Brace (H) to rear legs on Back Leg Panel (J) using 1 Sunk Bolt (A) per side. Do not tighten bolts for this step.

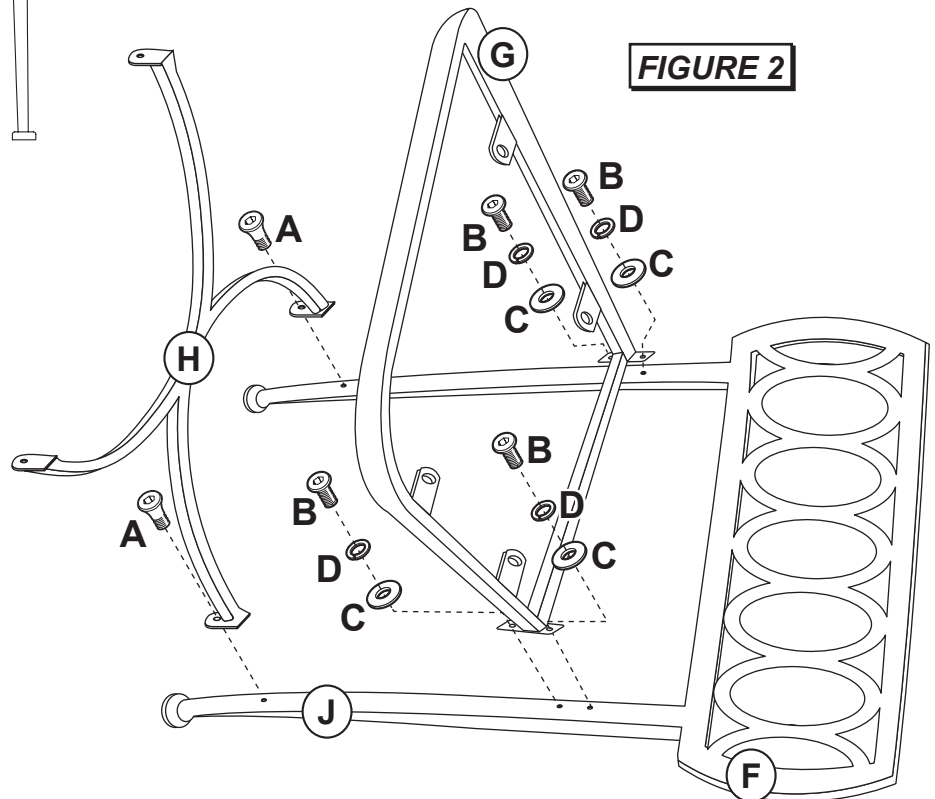
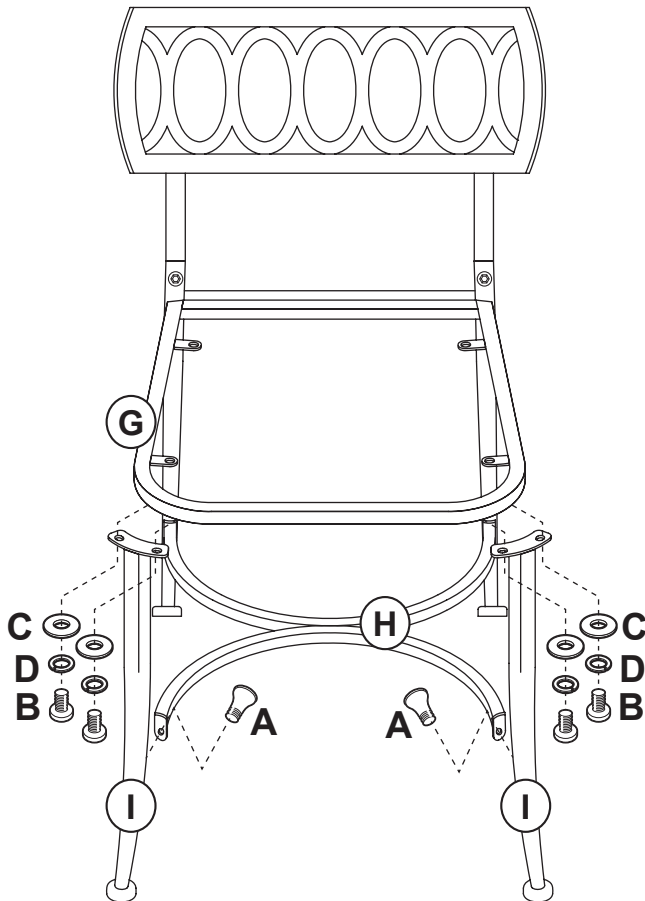

FIGURE 2

FIGURE 3



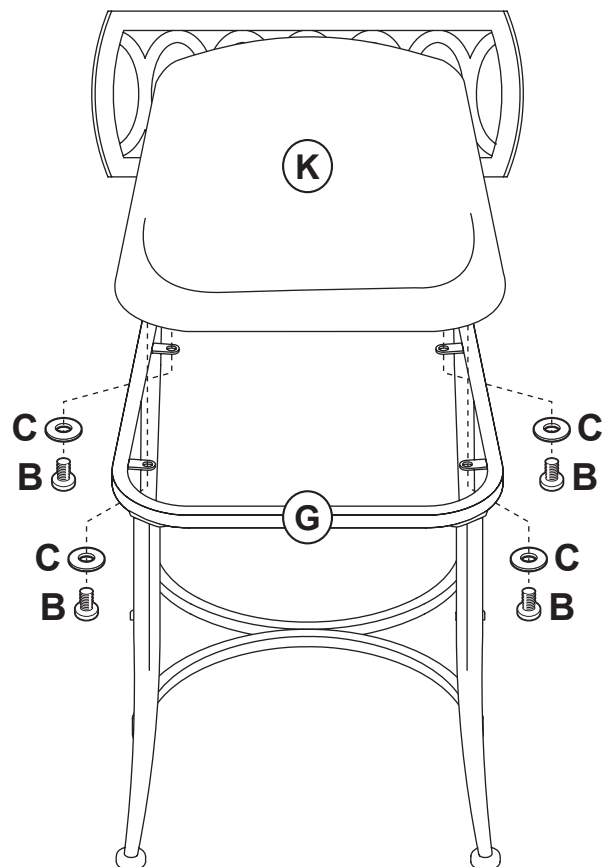
STEP 4 - Figure 3

Next, attach each Front Leg (I) to the bottom of Seat Frame (G) using 2 Allen Bolts (B), 2 Spring Washers (D), & 2 Flat Washers (C) to secure each in place. Do not tighten bolts for this step.

STEP 5 - Figure 3

Attach Cross Brace (H) to Front Legs (I) using 1 Sunk Bolt (A) each. Tighten all bolts using Allen Wrench (E) provided.

FIGURE 4



STEP 6 - Figure 4

Finally attach Seat Cushion (K) to Seat Frame (G) using 4 Allen Bolts (B) and 4 Flat Washers (C). Tighten all bolts using Allen Wrench (E) provided. Assembly is now complete.