

GB-VESA42

VESA GearBox™ Tilting Mount for Flat-Panels up to 50 lb./23 kg

LIST \$159.00	Color: Black
Weight	11.20 lb. 5.1 kg
Weight Cap. per Head	50 lb. 22.7 kg
Width	19.26 in. 489 mm
Height	10.00 in. 254 mm
Depth	2.24 in. 56.896 mm
Mounting Pattern	100 x 100, 200 x 100, 200 x 200, 400 x 200 mm
Display Range	26.00 - 42.00 in
Tilt	+8.00°

Downloads at Mounts.com



[Data Sheet](#)

[Bid Specification Document](#)



50 lb.



+10.00



+8.00°



2.24 in



100 x 100



200 x 100



200 x 200



400 x 200



26-42 in

DESCRIPTION

The GB-VESA42 is a tilting mount with integrated GearBox™ for flat-panels up to 50 lb. Typically fits displays ranging from 26-42 in. or with a mounting pattern of 100 x 100mm, 200 x 100mm, 200 x 200mm or 400 x 200mm. It offers up to 8° of downward tilt, a low-profile design, integrated GearBox™ for convenient media component storage, and multiple mounting slots for a flexible installation. The GB-VESA42 mounts to dual studs with 12" or 16" spacing and includes a hardware pack that allows for wood or concrete installation.

FEATURES

- Works with VESA patterns up to 400 x 200mm
- Provides 8° degrees of tilt
- Integrated GearBox™ discretely holds equipment and cabling behind the flat-panel
- Easy-to-install with multiple mounting slots

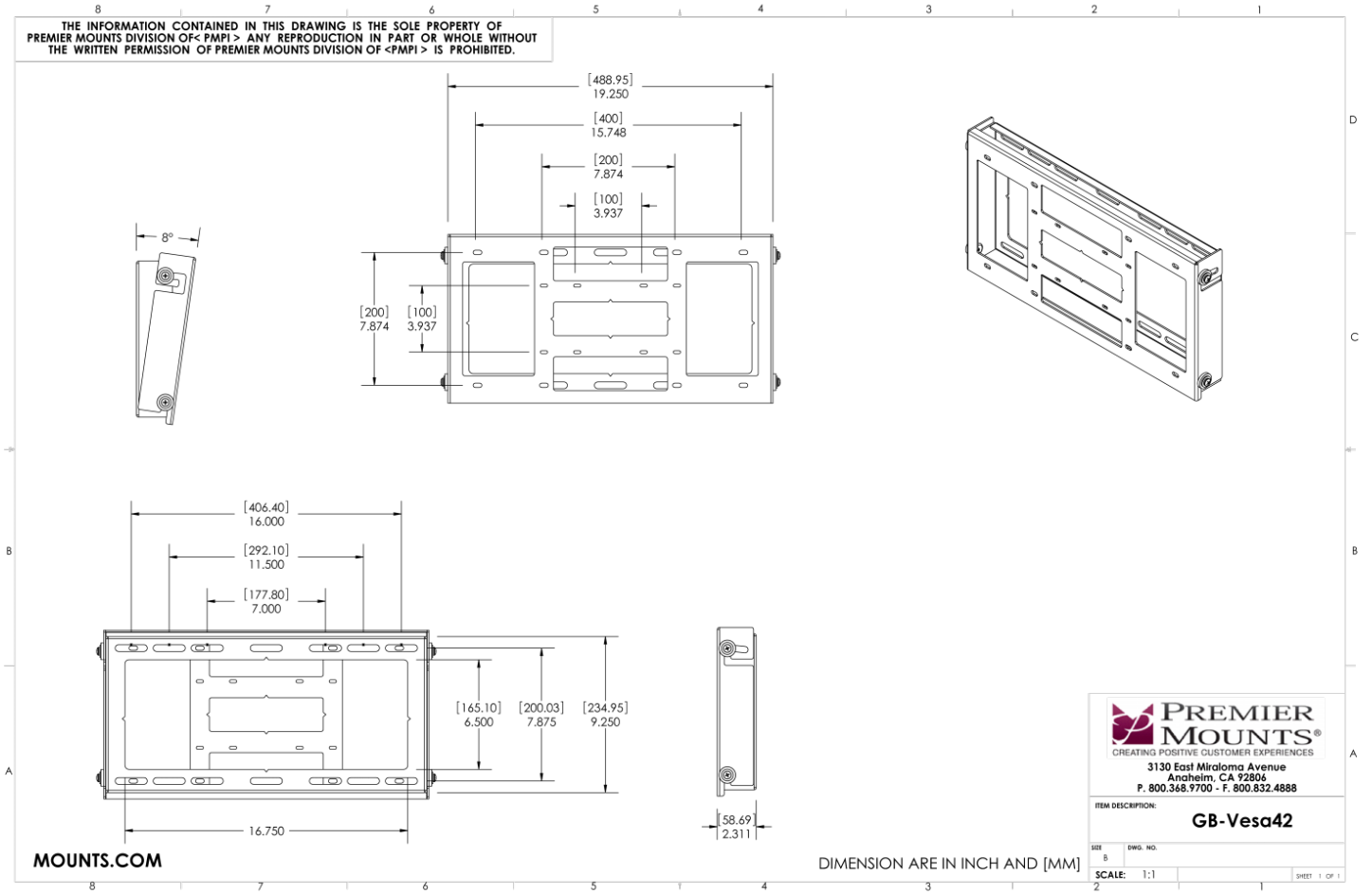


GB-VESA42

VESA GearBox™ Tilting Mount for Flat-Panels up to 50 lb./23 kg

DOWNLOAD FULL SIZE CAD FILES AND DIMENSIONAL DRAWINGS AT MOUNTS.COM

THE INFORMATION CONTAINED IN THIS DRAWING IS THE SOLE PROPERTY OF PREMIER MOUNTS DIVISION OF <PMPI>. ANY REPRODUCTION IN PART OR WHOLE WITHOUT THE WRITTEN PERMISSION OF PREMIER MOUNTS DIVISION OF <PMPI> IS PROHIBITED.



World Headquarters | 1321 S. State College Blvd., Fullerton, CA 92831 | 800.368.9700 USA | F 800.832.4888 | www.mounts.com

© 2014 PREMIER MOUNTS | Rev.01 | 10.2011