

PERFECT  
PIZZA



Perfect Pizza Kit #CTP22-PK shown above includes:  
Stainless Steel locating ring and 3/4" thick Commercial Quality Pizza Stone.



Caliber Indirect Blaze basket #CTP22-RB and the Caliber Rocking Rotisserie Kit #CTP22-RK shown above.  
The Caliber Rockin' Rotisserie Kit CTP22-RK includes the Rotisserie motor, rod, and forks as shown.

Accessories Featured

- Stainless Steel Cart/Side Shelf Kit (CTP22C-SSW)
- Stainless Steel Cart/Stainless Steel Side Shelf Kit (CTP22C-SS)
- Full Height Vinyl Cover (CTP22-V)
- Cauldera 14"/10 Quart Iron Cooking Pot Kit (CTP22-CCA)
- 1/2 Size Griddle Plate (CTPGD1-2)
- 3/4 Size Griddle Plate (CTPGD3-4)
- Perfect Pizza Kit (CTP22-PK)
- Rockin' Rotisserie Kit (CTP22-RK)
- Indirect Blaze Basket (CTP22-RB)
- Step Up Grill Rack (CTP-SU)
- Rib and Roast Rack (CTP-RIB-RACK)
- Build-In Leg Kit (CTPLK)



WWW.CALIBERAPPLIANCES.COM

As part of our ongoing product improvement processes, Caliber Appliances reserves the right to change design, specifications, and materials without notice.



## CALIBER PRO KAMADO CHARCOAL GRILL/SMOKER ACCESSORIES

### Cauldera Iron Cooking Pot Kit (CTP22-CCA)

Includes Heavy Duty 304 Stainless Steel Pot locating rack and seasoned 10 Quart USA made Lodge™ Iron 14" Cooking Pot.

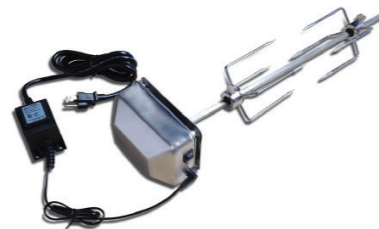


### Perfect Pizza Kit (CTP22-PK)

Includes Heavy Duty 304 Stainless Steel pizza stone locating rack and commercial grade 3/4" thick Pizza Stone for pizza primo and better baking.

### 1/2 Size Griddle Plate (CTPGD1-2)

Breakfast or Brunch on your grill is a breeze with the help of our 3/16" thick 304 Stainless Steel welded 1/2 size griddle plate.



### Rockin' Rotisserie Kit (CTP22-RK)

Includes side mount rotisserie motor (110V plug-in required), 12V transformer, stainless steel rotisserie rod and two rotisserie fork skewers. Easily holds a 6 pound chicken or tri tip.

### 3/4 Size Griddle Plate (CTPGD3-4)

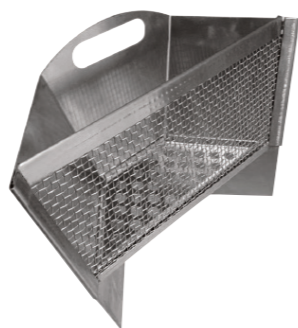
Breakfast or Brunch on your grill is a breeze with the help of our 3/16" thick 304 Stainless Steel welded 3/4 size griddle plate.



*If building in the Caliber Pro Kamado, make sure to follow the specifications on the Kamado Pro Spec Sheet to make room for the rotisserie motor. It requires 6" of clearance on the left, if facing the grill.*

### Step Up Grill Rack (CTP-2XRACK)

When you need that extra space for grilling or warming your meals. Adds an extra 180 square inches of usable space inside the already large grilling cavity.



### Indirect Blaze Basket (CTP22-RB)

Enjoy Chiaroscuro style rear basket grilling with our 304 Stainless Steel construction —designed for use with the exclusive Caliber Rotisserie feature, or anytime you require indirect heat for your Caliber Pro Kamado.

### Build-In Leg Kit (CTPLK)

For use when building in a Caliber Pro Kamado Grill head into an outdoor island enclosure. This set Includes 2 Stainless Steel Legs which mount to the bottom of the Caliber Pro Kamado Grill for built-in applications.



### Rib and Roast Rack (CTP-RIB-RACK)

Designed for your Caliber Pro Kamado Grill to accommodate up to 6 racks of ribs or reversible 10 lb roast. Made with a dishwasher safe quality.



SIX (YES, SIX) RACKS OF ST. LOUIS STYLE RIBS DONE TO PERFECTION.

## CALIBER PRO KAMADO FREESTANDING CART/SIDE SHELF KIT AND COVER



### Stainless Steel Cart/Side Shelf Kit (CTP22C-SSW)

Includes Heavy Duty 304 Stainless Steel cart base plus 2 wood slat side shelves as shown.

Side shelves—Shown assembled on our Stainless Steel Caliber Pro Kamado model CTP22-SS. Pictured with wood handle upgrade CTP22WH.



### Stainless Steel Cart/ Stainless Steel Side Shelf Kit (CTP22C-SS)

Includes Heavy Duty 304 Stainless Steel cart plus 2 all Stainless Steel Side shelves.

Side shelves—Shown assembled onto our Turquoise Caliber Pro Kamado with Stainless Steel handle model CTP22-TQ.



### Full Height Vinyl Cover (CTP22-V)

Protect your Caliber Pro Kamado Grill with our commercial grade vinyl protective cover (fits built-in or full kamado cart).