

CTM-MS3

Universal Tilting Mount for Flat-Panels up to 160 lb./73 kg

LIST \$399.00	Color: Black
Weight	39.00 lb. 17.7 kg
Weight Cap. per Head	160 lb. 72.6 kg
Width	36.66 in. 931 mm
Height	30.10 in. 764.5 mm
Depth	3.35 in. 85.09 mm
Mounting Pattern	200 x 200 (Min) - 900 x 735 (Max) mm
Tilt	+12.00°

Downloads at Mounts.com



[Data Sheet](#)



[Bid Specification Document](#)



160 lb.



+30.10



+12.00°



3.35 in



200 x 200 min.



900 x 735 max.

DESCRIPTION

The CTM-MS3 mounts to walls, floor stands, carts and ceiling adapters. Premier's universal series mounts feature the innovative patented Griplates™ (US Patent number 8,035,757 B2) support the flat-panel and hold the display tight on its mounting brackets. The patented Clevis tilting mechanism allows 12° of continuous tilt and built-in lateral shift makes precise alignment effortless.

FEATURES

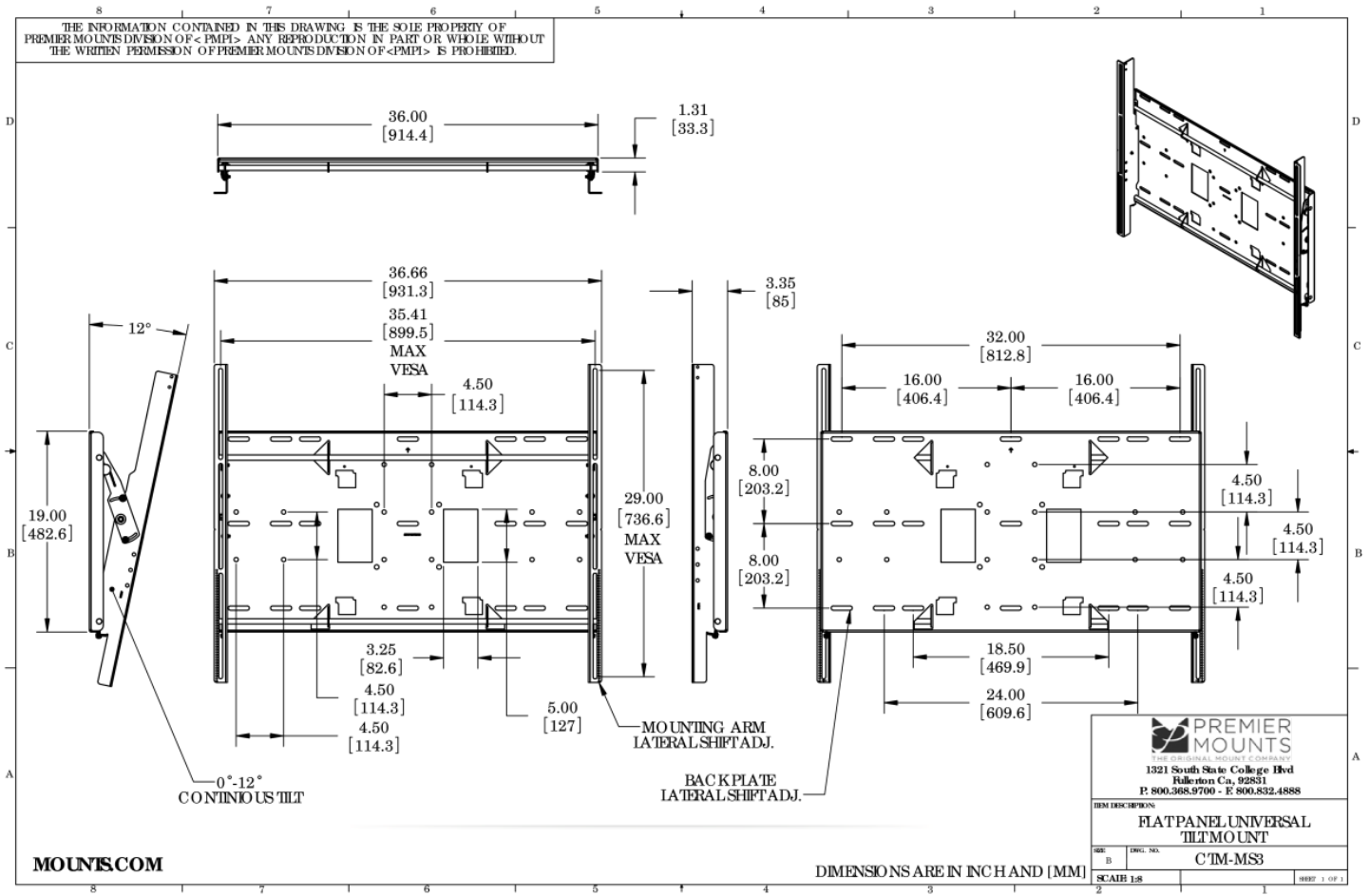
- Mounts to walls, floor stands, carts and ceiling adapters
- Patent-pending Griplates™ support flat-panel displays and hold the display tight on its mounting brackets
- Lateral shift for precise vertical alignment
- Features patented Clevis tilt mechanism
- Twelve degrees of continuous tilt
- Open design provides cable and power box access
- Extensive hardware pack



CTM-MS3

Universal Tilting Mount for Flat-Panels up to 160 lb./73 kg

DOWNLOAD FULL SIZE CAD FILES AND DIMENSIONAL DRAWINGS AT MOUNTS.COM



World Headquarters | 1321 S. State College Blvd., Fullerton, CA 92831 | 800.368.9700 USA | F 800.832.4888 | www.mounts.com

© 2014 PREMIER MOUNTS | Rev.01 | 10.2011