

8-Button Network Control Panel

AT-ANC-108D
User Manual



Introduction

The Atlona AT-ANC-108D is an 8-button network control panel for Atlona IP-based switchers. It is designed for easy configuration using the free Atlona Management System (AMS) software resource. Only one category cable needs to be connected to the AT-ANC-108D ensuring fast, hassle-free installation of control signal and power. Configuration is also fast. Simply download a configuration file from within AMS for Atlona single output switchers such as the HDVS Series, SW-5 Series, AT-UHD-CLSO-601, or AT-UHD-CLSO-612ED. Combined with Atlona IP-controllable switching products for huddle spaces, classrooms and conference rooms, the network control panel acts as a remote control to send IP commands to the switcher. The switcher in turns acts on those commands or translates the IP commands into RS-232 commands to control external devices such as displays to create a seamless AV system. The AT-ANC-108D fits into a US 1-gang junction box and is compatible with Decora-style wall plates.

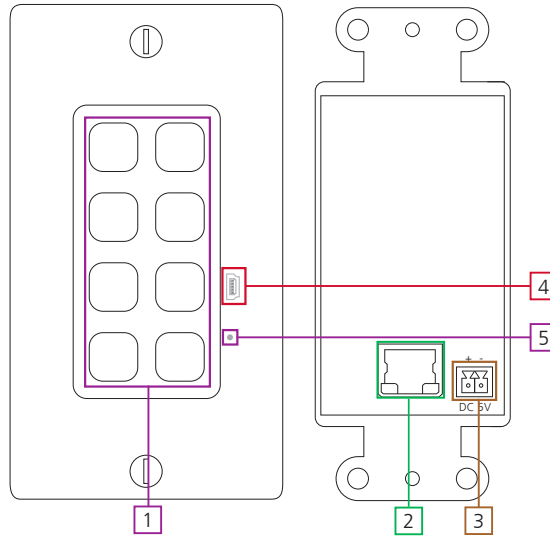
Package Content

- 1 x Unit
- 1 x Installation guide
- 1 x Decora face plate
- 1 x Blank button template
- 1 x Predefined button template

Features

- Remote control panel for Atlona IP-based products
- Fast installing, single cable integration
- AMS-configurable using downloadable templates
- Eight, soft-touch, back-lit buttons
- Two powering options: power from PoE router/switch or optional 5V power supply
- Installer-customizable, pre-cut label sheets
- Fits US 1-gang junction box with Decora wall plate

Panel Descriptions



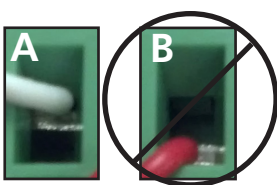
1. Buttons - Preprogrammed buttons to control connected Atlona device
2. LAN port - Connect network switch or router for device control
Note: Connect a PoE switch or injector to provide power to the unit without the need for a 5V power supply
3. DC 5V - Connect optional 5V power supply to this port (purchasable at atlona.com)
4. Mini USB - Used for manually updating, if needed
5. Reset button - Used to reset the unit, in case of lock ups or loss of signal. Refer to Resetting the AT-ANC-108D, on page 10, for more information.

Captive Screw

The captive screw connectors allow you to cut cables to a suitable length, reducing cable clutter while providing a more reliable connection.

Connecting

When connecting the cables to the female captive screw connector it is important that the wires be terminated correctly. The female captive screw connector has a contact plate at the top and must have the wires touching it for signal to pass. When wired correctly (see picture A) the signal will pass, incorrectly (see picture B) no signal will pass.



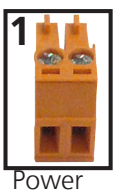
The captive screw connectors have a contact bar that is adjusted to compress the wire against the top contact plate. Use the screws at the top of the connector to compress the wire against the contact plate.



Turn the screws clockwise to raise the contact bar to the upper contact plate and hold the wires in place.



Turn the screws counter clockwise to lower the contact bar to release the wires.



A female captive screw power connector is included with the optional power supply (see picture 1)

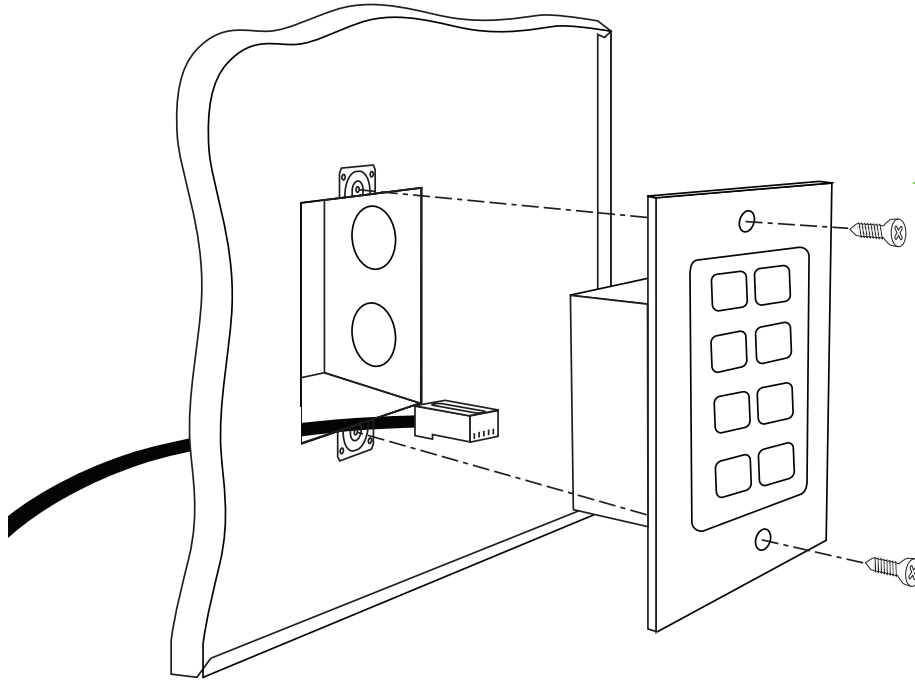
Power



Black: - White: +

The power cable (picture 2) will have exposed wires. Each wire is encased in a different colored cover.

Mounting



The ANC-108D is a 1U wall plate. To install the unit, simply connect the Ethernet cable to the unit, place the unit in the back box, and use the two wall plate screws to secure the unit to the box.

Ethernet

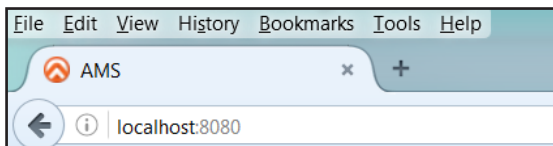
For convenience, the ANC-108D comes with DHCP on. This enables the switcher to be connected to a network without knowing available IP addresses.

AMS

For simple and complete control, the ANC-108D is supported by the AMS. Follow the AMS installation and discovery instructions found within the AMS manual.

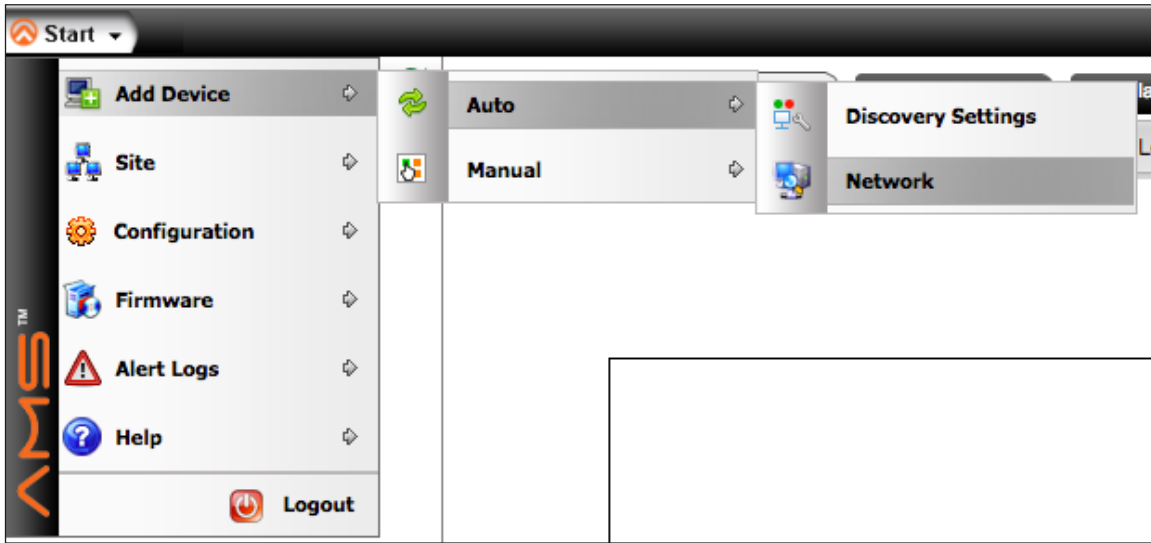
To download AMS, go to <http://atlon.com/product/at-sw-ams/>

To get to the log in screen of AMS: type localhost:8080 into the web browser on the computer AMS is running on. It will go straight to the log in for AMS.

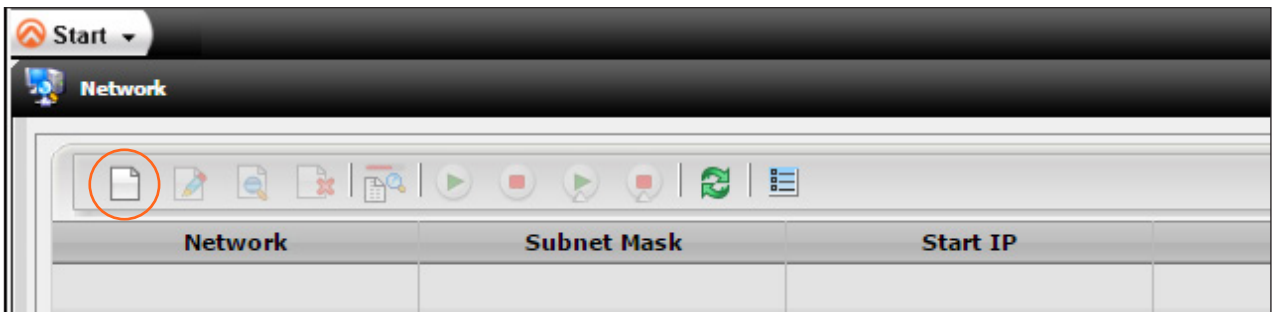


A login screen will appear (this is the same log in for admin and general users). For the first log in the username is "admin" and password is "admin123".

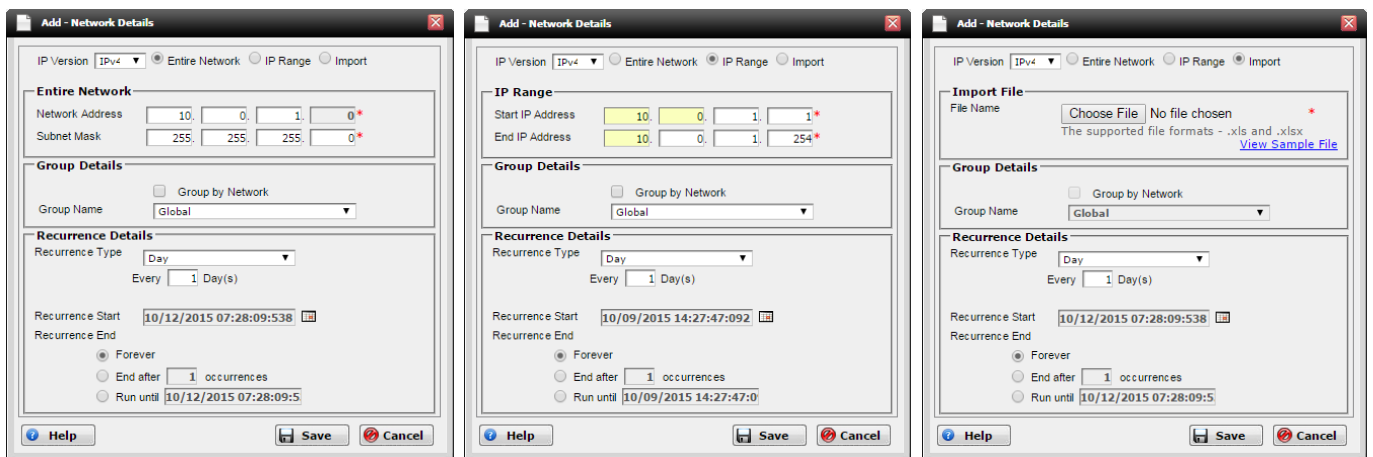
Click **Start > Add Device > Auto > Network** to run a network scan and locate all supported Atlona devices.



Click the **Add**  icon, near the upper-left corner of the screen.

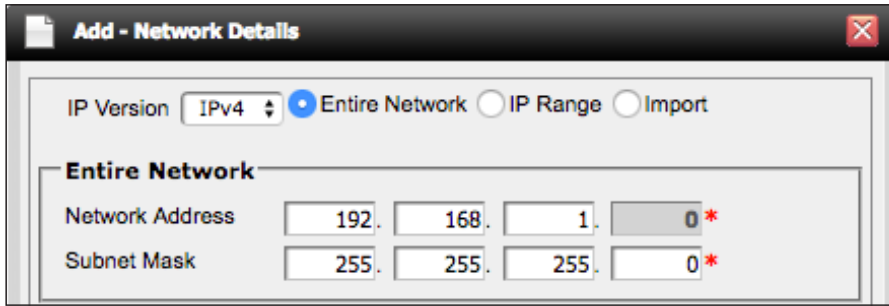


There will be three options when adding through Auto: Entire Network, IP Range, and Import

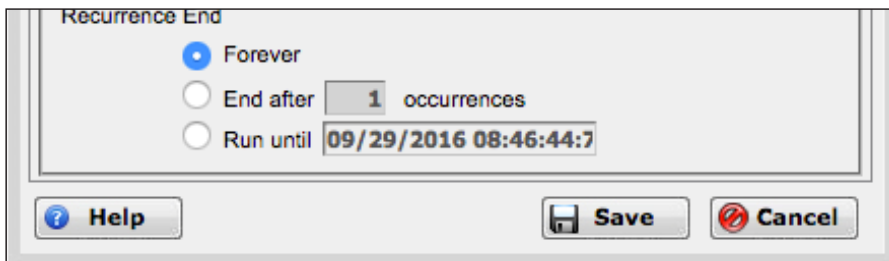


The preferred option is selecting Entire Network.

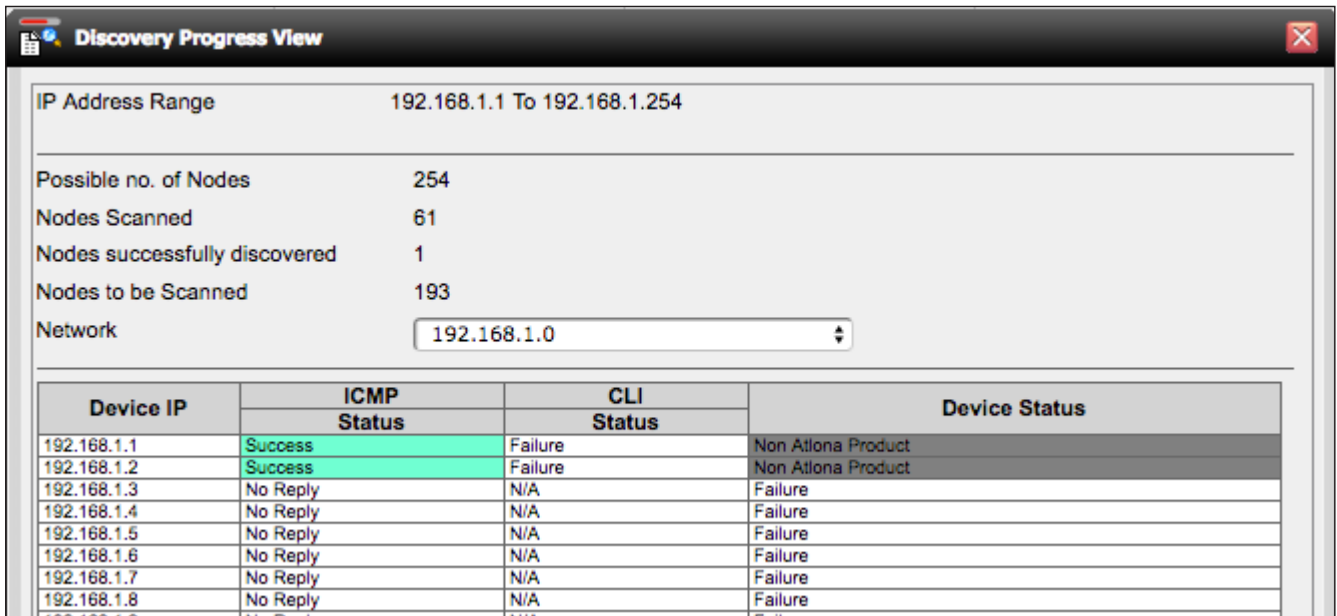
Enter the starting IP address and the subnet mask in the **Add - Network Details** dialog box.



Click the **Save** button to begin the discovery process.

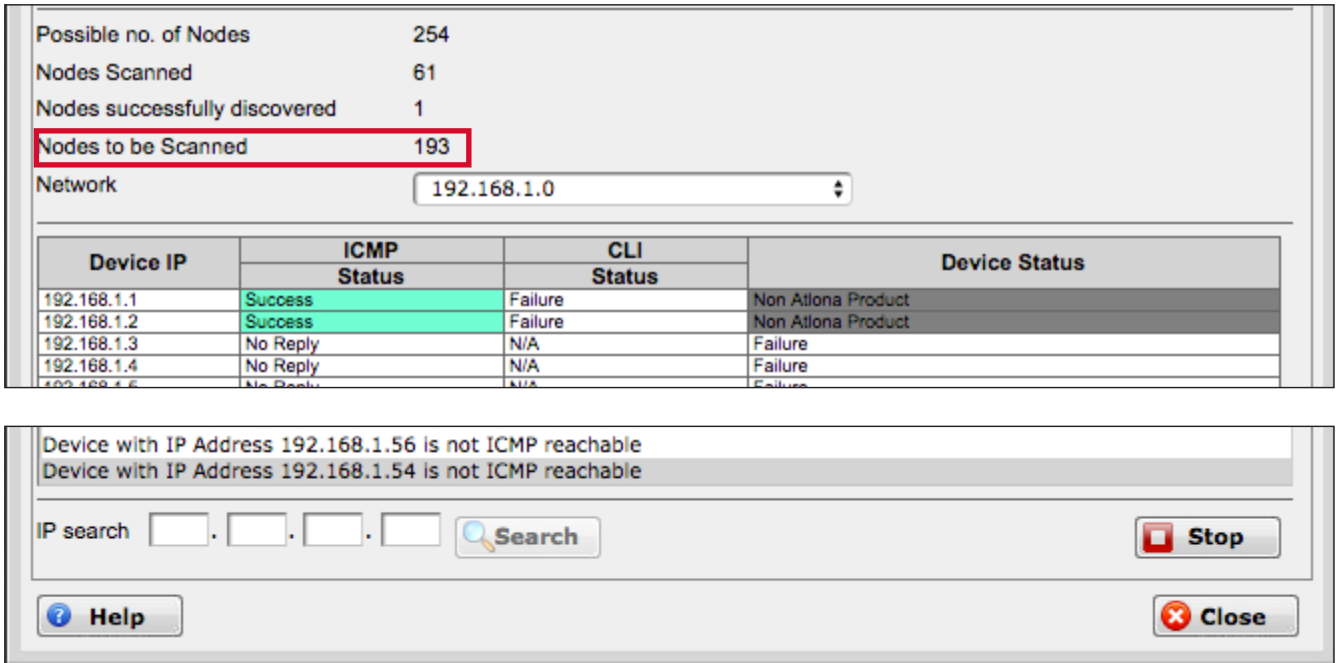


The **Discovery Process View** dialog will be displayed during the discovery process. All supported devices within the specified IP range will be discovered and added to the AMS database.



Device IP	ICMP Status	CLI Status	Device Status
192.168.1.1	Success	Failure	Non Atlon Product
192.168.1.2	Success	Failure	Non Atlon Product
192.168.1.3	No Reply	N/A	Failure
192.168.1.4	No Reply	N/A	Failure
192.168.1.5	No Reply	N/A	Failure
192.168.1.6	No Reply	N/A	Failure
192.168.1.7	No Reply	N/A	Failure
192.168.1.8	No Reply	N/A	Failure

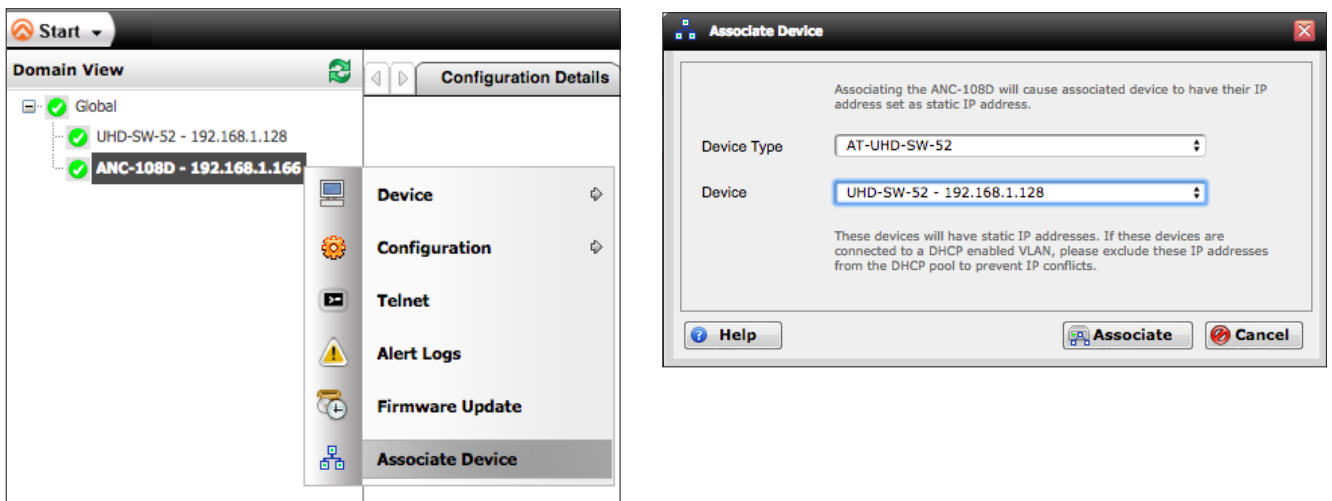
When the **Nodes to be Scanned** reaches 0, click the **Close** button on the dialog.



Right-click on the AT-ANC-108D device, from the **Domain View**, and click **Associate Device** from the context menu.

The **Associate Device** dialog will be displayed.

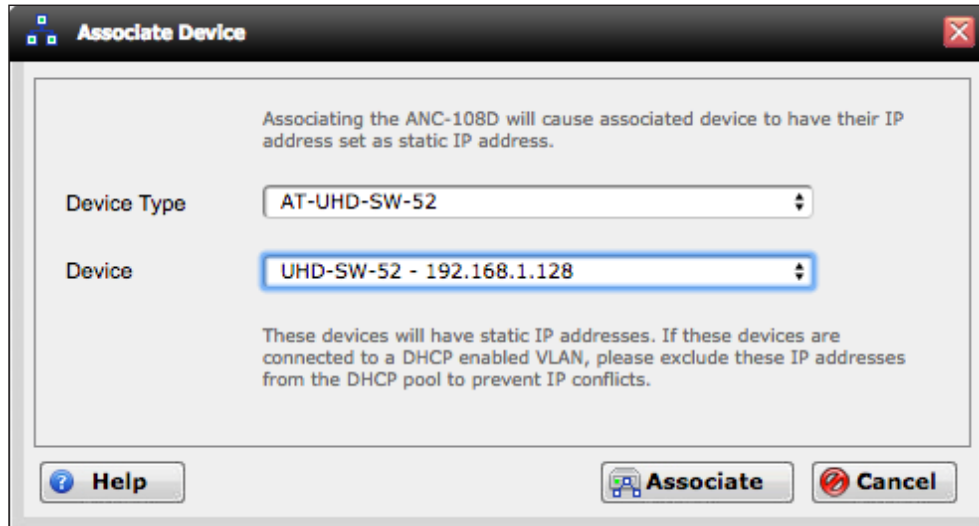
Note that associating the AT-ANC-108D will cause the associated device to turn off DHCP and have a static IP address. If these devices are connected to a DHCP-enabled LAN, then these IP addresses need to be excluded from the DHCP pool to prevent IP conflicts.



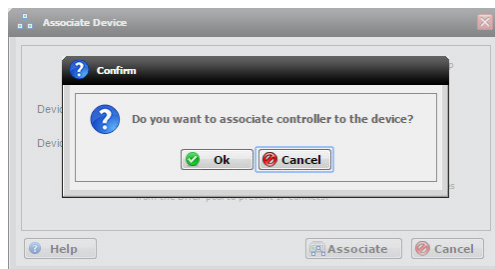
Select the device type to be associated with the AT-ANC-108D, from the **Device Type** drop-down list. The drop-down list will only display products that have been discovered and added to the database by AMS.

Select the device to be associated with the AT-ANC-108D, from the **Device** drop-down list. The drop-down list will only display devices that are members of the selected **Device Type**.

Click the **Associate** button.

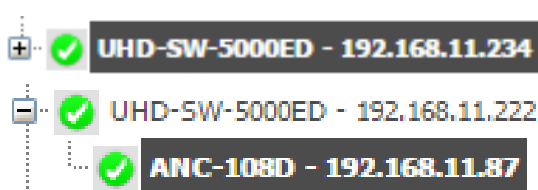
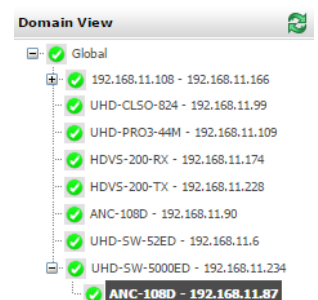


The **Confirmation** message box will be displayed. Click the **OK** button to message box.



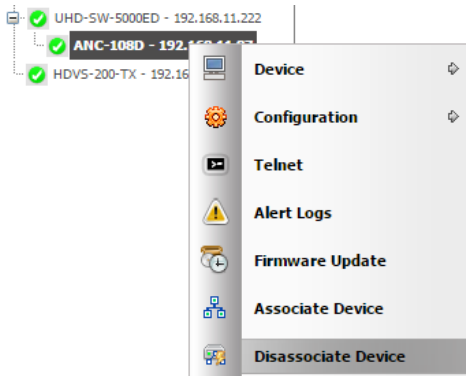
The association process will begin and will take approximately 30 - 60 seconds. During this time, AMS is configuring the AT-ANC-108D to work with the selected device. When the association process has completed, the AT-ANC-108D will become a *child* of the associated device, under the **Domain View**.

Note: During the association process, it is common for the AT-ANC-108D to temporarily lose network connectivity. Once the association process is complete, and AMS shows the AT-ANC-108D as unreachable, pinging the device will show the correct reachability status. This can be done by right-clicking the AT-ANC-108D, hovering over Device, and clicking Ping

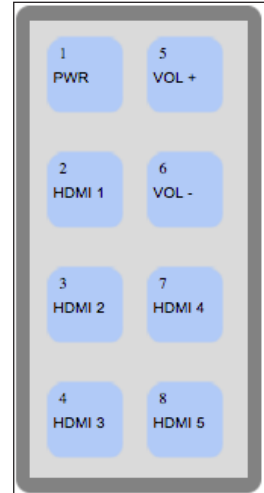


When a device contains a *child*, a "+" will appear next to the *parent* device. Click the "+" to expand the node and display the *child*. Once a node is fully expanded, a "-" symbol will appear next to the *parent*. Click the "-" to collapse the node and display only the *parent* device.

The digital buttons displayed on AMS provide the same functionality as the physical buttons on the AT-ANC-108D.



The AT-ANC-108D can be disassociated from an associated device by right-clicking the AT-ANC-108D, then clicking **Disassociate Device** from the context menu. This will disassociate the two devices and put the AT-ANC-108D device into its default mode.



Button Functions

When linked to different devices, the ANC-108D buttons will change functionality to suite each device. View the table below for how the power and volume buttons of the ANC-108D works with each device.

Power On/Off

Control	Command	Device
Device	PWON / PWOFF	AT-UHD-CLSO-601 AT-UHD-CLSO-612 AT-UHD-SW-52
Display: Trigger CEC Trigger IP Trigger RS-232	TrigCEC on/off TrigIP on/off TrigRS on/off	AT-HD-SC-500 AT-HDVS-200-TX/TX-WP AT-UHD-SW-5000ED
Display: Trigger CEC Trigger IP Trigger RS-232	TrigCEC1 on/off TrigIP on/off TrigRS on/off	AT-UHD-CLSO-612ED AT-UHD-SW-52ED
Display: Trigger CEC Trigger IP Trigger RS-232	TrigCEC1 on/off TrigIP1 on/off TrigRS1 on/off	AT-UHD-HDVS-300

Note: For trigger commands to work, the device must be programmed with display commands (see device manual for instructions to program display commands)

Volume +/- & Mute

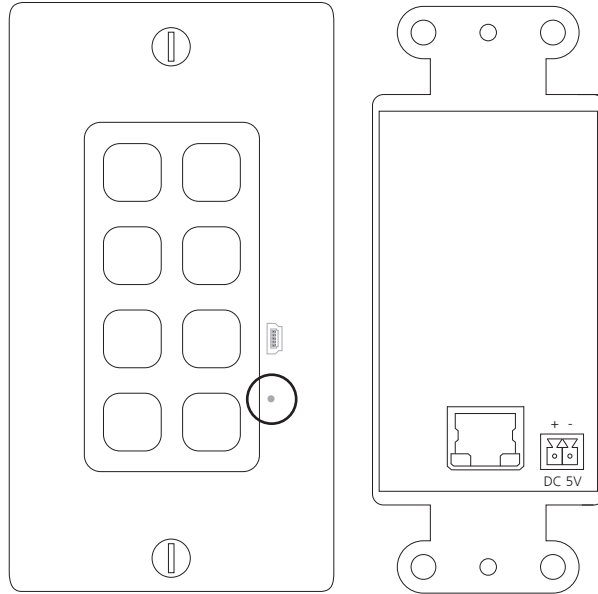
Control	Command	Device
Device	Vol +/- Mute on/off	AT-HD-SC-500
Device	VOUT +/- VOUTMute on/off	AT-HDVS-200-TX/TX-WP
Device	VOL+/-	AT-UHD-CLSO-601 AT-UHD-CLSO-612 AT-UHD-CLSO-612ED
Device	VOUT1 +/-	AT-UHD-SW-52 AT-UHD-SW-52ED AT-UHD-SW-5000ED
Display: Trigger IP Trigger RS-232	TrigIP1 vol+/- TrigRS1 vol+/-	AT-UHD-HDVS-300

Resetting the AT-ANC-108D

Follow the procedure below to reset the AT-ANC-108D to the default IP address of 192.168.1.50. The unit will be placed in static IP mode.

Remove the wall plate from the front of the AT-ANC-108D.

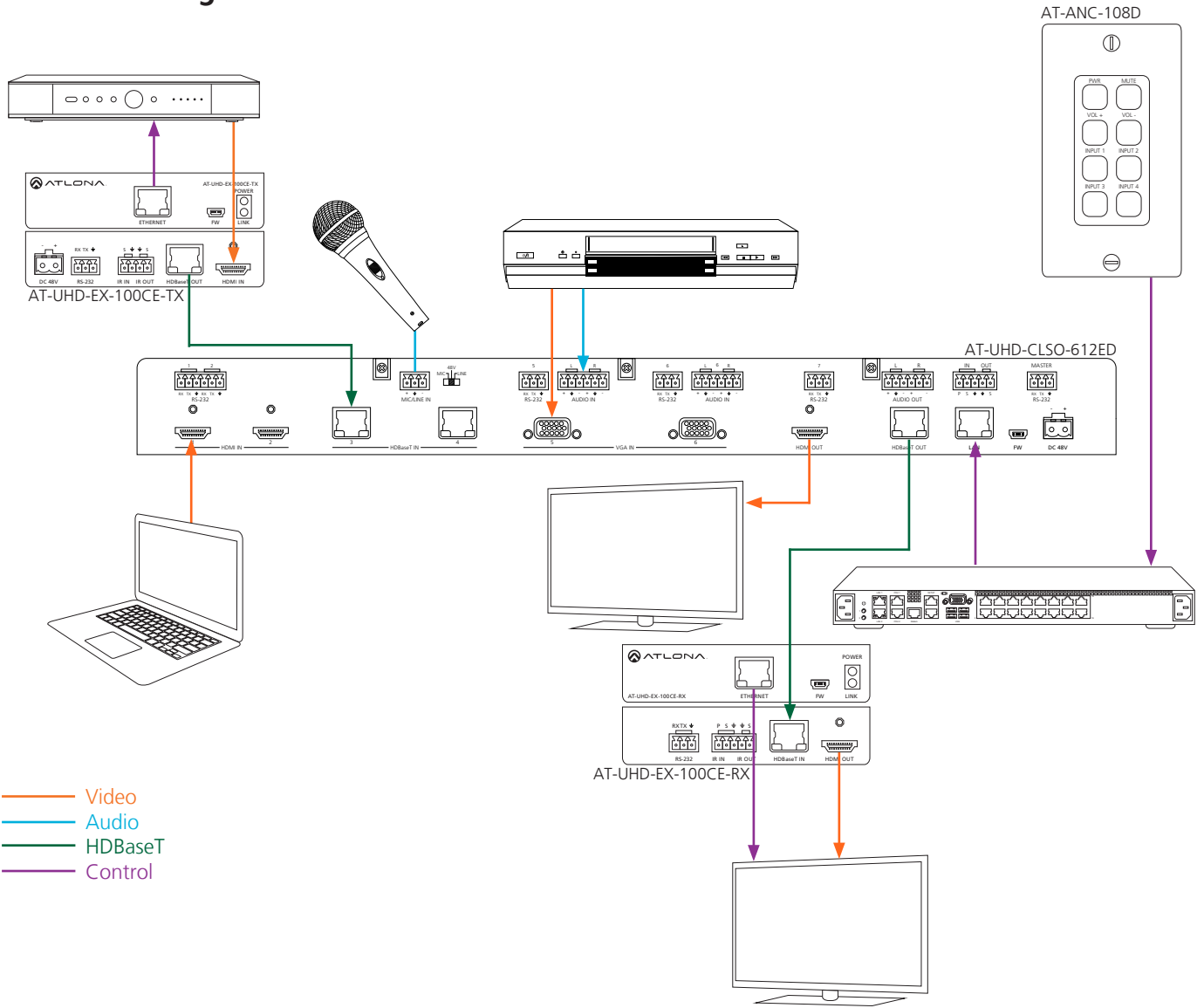
Locate the Reset button in the lower-right portion of the AT-ANC-108D.



Press and hold the button in the upper-right, then press the Reset button using the end of a paper clip or other pointed object. The upper-right button will flash twice.

Release the upper-right button and the Reset button.

Connection Diagram



Safety Information

Safeguards



To reduce the risk of electric shock, do not expose this product to rain or moisture



Do not modify the wall plug. Doing so will void the warranty and safety features.



If the wall plug does not fit into your local power socket, hire an electrician to replace your obsolete socket.



This equipment should be installed near the socket outlet and the device should be easily accessible in the case it requires disconnection.

Precautions

FCC regulations state that any unauthorized changes or modifications to this equipment, not expressly approved by the manufacturer, could void the user's authority to operate this equipment.

Operate this product using only the included external power supply. Use of other power supplies could impair performance, damage the product, or cause fires.

In the event of an electrostatic discharge this device may automatically turn off. If this occurs, unplug the device and plug it back in.

Protect and route power cords so they will not be stepped on or pinched by anything placed on or against them. Be especially careful of plug-ins or cord exit points from this product.

Avoid excessive humidity, sudden temperature changes or temperature extremes.

Keep this product away from wet locations such as bathtubs, sinks, laundries, wet basements, fish tanks, and swimming pools.

Use only accessories recommended by Atlona to avoid fire, shock, or other hazards.

Unplug the product before cleaning. Use a damp cloth for cleaning and not cleaning fluid or aerosols. Such products could enter the unit and cause damage, fire, or electric shock. Some substances may also mar the finish of the product.

Never open, remove unit panels, or make any adjustments not described in this manual. Attempting to do so could expose you to dangerous electrical shock or other hazards. It may also cause damage to your product. Opening the product will void the warranty.

Do not attempt to service the unit. Disconnect the product and contact your authorized Atlona reseller or contact Atlona directly.

Atlona, Inc. ("Atlona") Limited Product Warranty Policy

Coverage

Atlona warrants its products will substantially perform to their published specifications and will be free from defects in materials and workmanship under normal use, conditions and service.

Under its Limited Product Warranty, Atlona, at its sole discretion, will either:

- A) repair or facilitate the repair of defective products within a reasonable period of time, restore products to their proper operating condition and return defective products free of any charge for necessary parts, labor and shipping
- OR**
- B) replace and return, free of charge, any defective products with direct replacement or with similar products deemed by Atlona to perform substantially the same function as the original products
- OR**
- C) refund the pro-rated value based on the remaining term of the warranty period, not to exceed MSRP, in cases where products are beyond repair and/or no direct or substantially similar replacement products exist.

Repair, replacement or refund of Atlona's products is the purchaser's exclusive remedy and Atlona's liability does not extend to any other damages, incidental, consequential or otherwise.

This Limited Product Warranty extends to the original end-user purchaser of Atlona's products and is non-transferrable to any subsequent purchaser(s) or owner(s) of these products.

Coverage Periods

Atlona's Limited Product Warranty Period begins on the date of purchase by the end-purchaser. The date contained on the end-purchaser's sales or delivery receipt is the proof purchase date.

Limited Product Warranty Terms – New Products

- 10 years from proof of purchase date for hardware/electronics products purchased on or after June 1, 2013
- 3 years from proof of purchase date for hardware/electronics products purchased before June 1, 2013
- Lifetime Limited Product Warranty for all cable products

Limited Product Warranty Terms – Refurbished (B-Stock) Products

- 3 years from proof of purchase date for all Refurbished (B-Stock) hardware and electronic products purchased on or after June 1, 2013

Remedy

Atlona recommends that end-purchasers contact their authorized Atlona dealer or reseller from whom they purchased their products. Atlona can also be contacted directly. Visit www.atlona.com for Atlona's contact information and hours of operation. Atlona requires that a dated sales or delivery receipt from an authorized dealer, reseller or end-purchaser is provided before Atlona extends its warranty services. Additionally, a return merchandise authorization (RMA) and/or case number, is required to be obtained from Atlona in advance of returns.

Atlona requires that products returned are properly packed, preferably in the original carton, for shipping. Cartons not bearing a return authorization or case number will be refused. Atlona, at its sole discretion, reserves the right to reject any products received without advanced authorization. Authorizations can be requested by calling 1-877-536-3976 (US toll free) or 1-408-962-0515 (US/international) or via Atlona's website at www.atlona.com.

Exclusions

This Limited Product Warranty excludes:

- Damage, deterioration or malfunction caused by any alteration, modification, improper use, neglect, improper packing or shipping (such claims must be presented to the carrier), lightning, power surges, or other acts of nature.
- Damage, deterioration or malfunction resulting from the installation or removal of this product from any installation, any unauthorized tampering with this product, any repairs attempted by anyone unauthorized by Atlona to make such repairs, or any other cause which does not relate directly to a defect in materials and/or workmanship of this product.
- Equipment enclosures, cables, power supplies, batteries, LCD displays, and any accessories used in conjunction with the product(s).
- Products purchased from unauthorized distributors, dealers, resellers, auction websites and similar unauthorized channels of distribution.

Disclaimers

This Limited Product Warranty does not imply that the electronic components contained within Atlona's products will not become obsolete nor does it imply Atlona products or their electronic components will remain compatible with any other current product, technology or any future products or technologies in which Atlona's products may be used in conjunction with. Atlona, at its sole discretion, reserves the right not to extend its warranty offering in instances arising outside its normal course of business including, but not limited to, damage inflicted to its products from acts of god.

Limitation on Liability

The maximum liability of Atlona under this limited product warranty shall not exceed the original Atlona MSRP for its products. To the maximum extent permitted by law, Atlona is not responsible for the direct, special, incidental or consequential damages resulting from any breach of warranty or condition, or under any other legal theory. Some countries, districts or states do not allow the exclusion or limitation of relief, special, incidental, consequential or indirect damages, or the limitation of liability to specified amounts, so the above limitations or exclusions may not apply to you.

Exclusive Remedy

To the maximum extent permitted by law, this limited product warranty and the remedies set forth above are exclusive and in lieu of all other warranties, remedies and conditions, whether oral or written, express or implied. To the maximum extent permitted by law, Atlona specifically disclaims all implied warranties, including, without limitation, warranties of merchantability and fitness for a particular purpose. If Atlona cannot lawfully disclaim or exclude implied warranties under applicable law, then all implied warranties covering its products including warranties of merchantability and fitness for a particular purpose, shall provide to its products under applicable law. If any product to which this limited warranty applies is a "Consumer Product" under the Magnuson-Moss Warranty Act (15 U.S.C.A. §2301, ET SEQ.) or other applicable law, the foregoing disclaimer of implied warranties shall not apply, and all implied warranties on its products, including warranties of merchantability and fitness for the particular purpose, shall apply as provided under applicable law.

Other Conditions

Atlona's Limited Product Warranty offering gives legal rights, and other rights may apply and vary from country to country or state to state. This limited warranty is void if (i) the label bearing the serial number of products have been removed or defaced, (ii) products are not purchased from an authorized Atlona dealer or reseller. A comprehensive list of Atlona's authorized distributors, dealers and resellers can be found at www.atlona.com.

Atlona Product Registration

Thank you for purchasing this Atlona product. - We hope you enjoy it and will take an extra few moments to register your new purchase.

Registration creates an ownership record if your product is lost or stolen and helps ensure you'll receive notification of performance issues and firmware updates.

At Atlona, we respect and protect your privacy, assuring you that your registration information is completely secure. Atlona product registration is completely voluntary and failure to register will not diminish your limited warranty rights.

To register go to: <http://www.atlona.com/registration>