

# HINT 6 / P 6

## **USB Driver Installation for Windows 7, 8 or Vista Users** rev 1.1 (8/6/18)

Before Windows 7, 8 or Vista users can play music using the USB input on the HINT 6 or P 6, the drivers must be installed. The following instructions will step you through the installation of these drivers.

Windows 10 and Mac users do not need to install any drivers. If your Windows 10 has not updated since April 2018 (version 1803 or greater) you may also need to install these drivers. Windows 10 users who prefer to use ASIO drivers can also follow these instructions.

*If you have any questions, please email [service@parasound.com](mailto:service@parasound.com)*

## **PART 1** - **Download and Unzip Files**

*If you are reading these instructions you most likely have already completed this.*

- Download the driver package (zip folder) from the HINT 6's (or P 6) web page under the Support tab.
- Locate the zip folder you just downloaded. It is named "HINT 6 & P 6 Drivers for Windows.zip"
- Unzip the folder by right clicking on the folder and then selecting "Extract All..."
- Make a note of where the extracted files are being saved and then click "Extract"


## **PART 2** - **Run Setup Application**

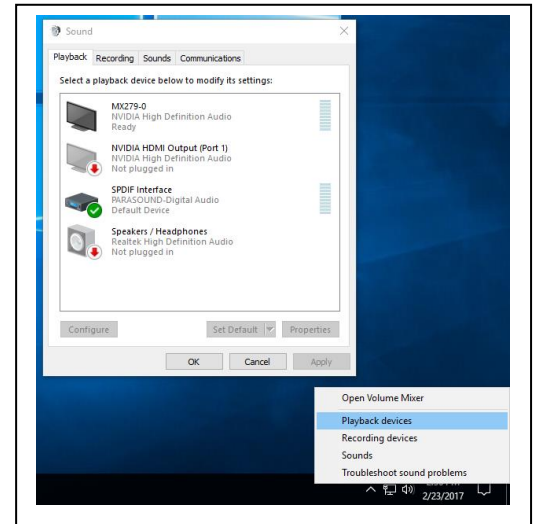
- Open the extracted folder named "HINT 6 & P 6 Drivers for Windows"
- Run the setup application by double clicking "SETUP"
- "Welcome to the BRAVO-HD Setup Wizard" will be displayed, click "Next"
- Follow the On-Screen instruction to complete the setup
- Click "Yes" to allow Savitech corporation to make changes to your computer

The Install Wizard will ask you to restart your computer. Click "Finish" to restart your computer or you may choose to restart your computer later if you need to save any open documents. You won't be able to listen to music until your computer restarts.

## PART 3 - Set the Default Audio Playback Device

After installing the drivers and your computer has restarted, check that the USB cable is connected to your PC and that the HINT 6 or P 6 is powered on. You will likely want the HINT 6 or P 6 to be set as your computer's default audio output device. Follow these steps to assign the HINT 6 or P 6 as the default audio device in Windows 7,8 or Vista:

1. Right click on the loudspeaker icon  in the bottom right of your screen (on the tool bar)
2. Select "Playback Devices"
3. When the "Sound" window pops up click on "PARASOUND" and then click "Set as Default"
4. Click "OK" to close the "Sound" window



**Note:** If for some reason you cannot find the loudspeaker icon, you will need to select *Sound Playback Options in the Control Panel* and then select "PARASOUND" as your default playback device.