

KEY FEATURES

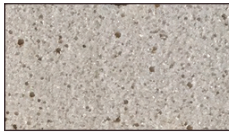
QUILTING



LUXURIOUS ORGANIC COTTON QUILT
Provides wonderful comfort and breathability allowing air to circulate around your body



JOMA WOOL SELECT
Specially crimped fibre gives added resiliency and comfort. Naturally regulates temperature and wicks moisture away from the body for a more comfortable sleep.



GRAPHITE COPPER FOAM
Reduces bacterial growth and dissipates heat accumulation in the mattress while reducing pressure points



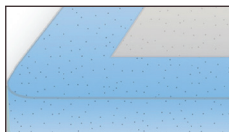
PLUSH FOAM
Reduces pressure points while maintaining a plush surface feel

COMFORT LAYERS / UPHOLSTERY

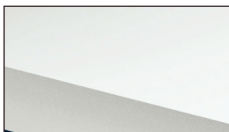


PLUSH LATEX
Naturally conforms to body contours for optimal orthopedic support

CORE STRUCTURE



RACETRACK FOAM
Reduces pressure points while providing a supportive surface feel



FIRM FOAM SUPPORT CORE
Resilient high-density foam provides long lasting support and comfort

◆ CORE STRUCTURE

- ◆ 2" Racetrack Foam
- ◆ 7 1/2" Firm Foam Support Core

◆ QUILTING

- ◆ Luxurious Organic Cotton Quilt
- ◆ 22 oz Joma Wool Fibre
- ◆ 1" Graphite Copper Foam
- ◆ 1/2" Plush Foam

◆ COMFORT LAYERS/UPHOLSTERY

- ◆ 2" Plush Latex

◆ TOP OF COIL

- ◆ Flexatron Pad

◆ BOTTOM OF COIL

- ◆ Flexatron Pad

◆ FABRIC

- | | |
|--------------|-------|
| ◆ Panel | Vanda |
| ◆ Border | Klein |
| ◆ Foundation | Ellis |

◆ FOUNDATION

- ◆ Kingsdown Foundation

◆ WARRANTY

- ◆ 10 years

◆ COIL COUNTS

- ◆ (N/A)

