

## Before the first use

**Damage from incorrect installation and connection.**  
Installing and connecting the washing machine incorrectly will cause serious damage to property. See "Installation".

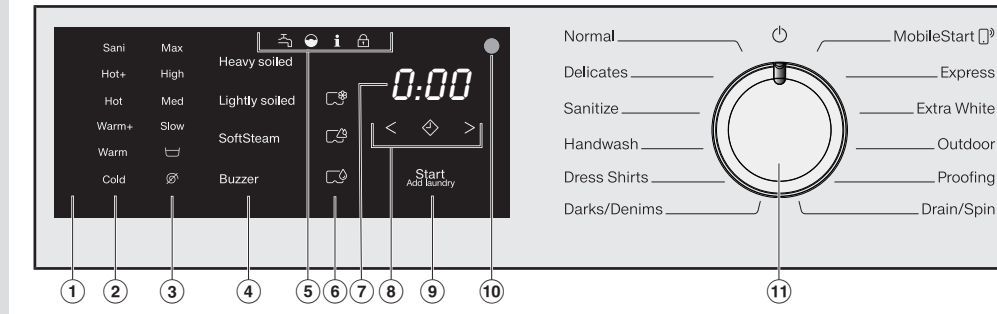
**Damage resulting from failure to remove the shipping struts.**  
Failure to remove the shipping struts can result in damage to the washing machine and to adjacent cabinetry or appliances. Remove the shipping struts as described in "Installation and connection".

3 steps must be completed before the washing machine can be operated.

1. Remove the shipping struts.
2. Set up Miele@home.
3. Start the calibration program.

For additional information, please refer to the separate operating instructions supplied.

## Operation



- Control field**
- Temperature sensor buttons** for selecting the temperature.
- Spin Speed sensor buttons** for selecting the final spin speed.
- Sensor buttons for options**  
You can supplement the wash programs with options. If a wash program has been selected, the sensor buttons for the available options light up dimly.
- Indicator lights**
  - Water inlet and drainage faults
  - Excess detergent used
  - Reminder about Sanitize information
  - The Add laundry function cannot be selected.
- CapDosing sensor buttons**
  - Fabric care (e.g., fabric softener, proofing agent)
  - Additives (e.g., detergent enhancers)
  - Detergent (for the main wash only)
- Time display**  
After the program has started, the program runtime will appear on the display in hours and minutes.
- Sensor buttons < >**  
For the Delay start function.
- Start/Add laundry sensor button**
  - Touching the Start/Add laundry sensor button starts the selected program. The sensor button lights up constantly.
  - Once the program has been started, the Start/Add laundry sensor button allows you to add laundry.
- Optical interface**  
This is used by the Service department as a transmission point.
- Program selector**  
For selecting programs and for switching the machine off. The washing machine is switched on when you select a program, and switched off by turning the program selector to the position.

**Environmentally friendly washing**

- Make use of the maximum load that the wash program can accommodate. This will keep energy and water consumption to a minimum in relation to the size of the load.
- Use the Express program for small, lightly soiled loads.
- Modern detergents make it possible to wash at lower temperatures (e.g., 70°F/20°C). Using the corresponding temperature settings will save energy.
- Washing at low temperatures and/or using liquid detergents can cause bacteria and odors to build up in the washing machine. Miele therefore recommends cleaning the washing machine once every month.

When the **i** indicator light lights up on the control field and **!** appears on the time display, the washing machine must be cleaned.

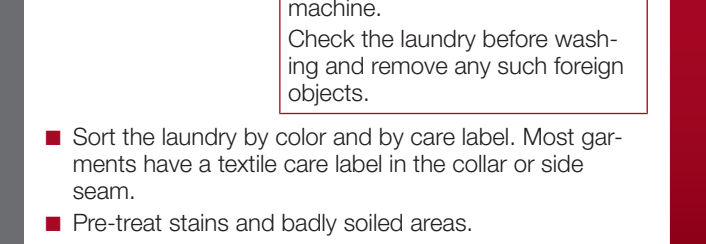
**Operating the sensor buttons**  
The sensor buttons react to fingertip contact. If a sensor button is illuminated, it can be selected.  
If a sensor button is brightly lit, this means: currently selected  
If a sensor button is dimly lit, this means: selection possible

- 1. Preparing the laundry**
  - Empty all pockets.
  - Damage due to foreign objects. Nails, coins, paper clips, and so on can cause damage to garments and components in the machine. Check the laundry before washing and remove any such foreign objects.
  - Sort the laundry by color and by care label. Most garments have a textile care label in the collar or side seam.
  - Pre-treat stains and badly soiled areas.
- 2. Selecting a program**
  - 1. Selecting the standard programs with the program selector dial**
    - Turn the program selector to the required program. The selected program will be shown in the display. This will then be replaced by the standard display.
  - 2. Selecting programs via the MobileStart program selector position and the Miele app**
    - To use MobileStart, the washing machine must be logged on to the WiFi network and Remote control must be switched on.
    - Turn the program selector to the MobileStart position. **on** appears on the time display.

## Preparing the laundry

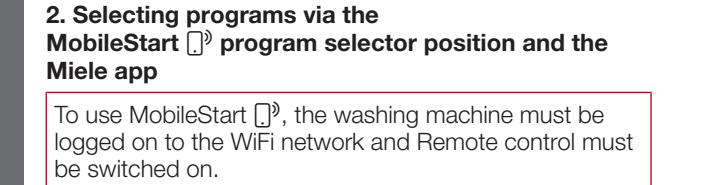
**1. Preparing the laundry**

- Empty all pockets.
- Damage due to foreign objects. Nails, coins, paper clips, and so on can cause damage to garments and components in the machine. Check the laundry before washing and remove any such foreign objects.
- Sort the laundry by color and by care label. Most garments have a textile care label in the collar or side seam.
- Pre-treat stains and badly soiled areas.



**2. Selecting a program**

- 1. Selecting the standard programs with the program selector dial**
  - Turn the program selector to the required program. The selected program will be shown in the display. This will then be replaced by the standard display.
- 2. Selecting programs via the MobileStart program selector position and the Miele app**
  - To use MobileStart, the washing machine must be logged on to the WiFi network and Remote control must be switched on.
  - Turn the program selector to the MobileStart position. **on** appears on the time display.



The washing machine can now be operated with the Miele app.

When the **i** indicator light lights up on the control field and **!** appears on the time display, the washing machine must be cleaned.

## Selecting a program

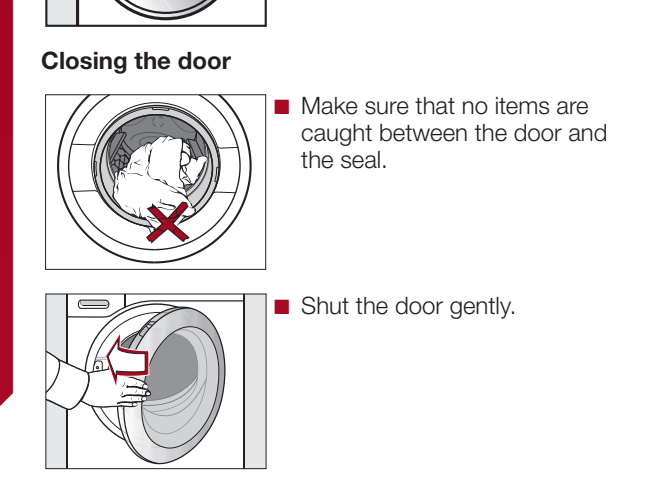
**3. Loading the washing machine**

**Opening the door**

- Take hold of the door and pull it open.
- Unfold the laundry and load loosely into the drum.

**Closing the door**

- Make sure that no items are caught between the door and the seal.
- Shut the door gently.



**4. Selecting program settings**

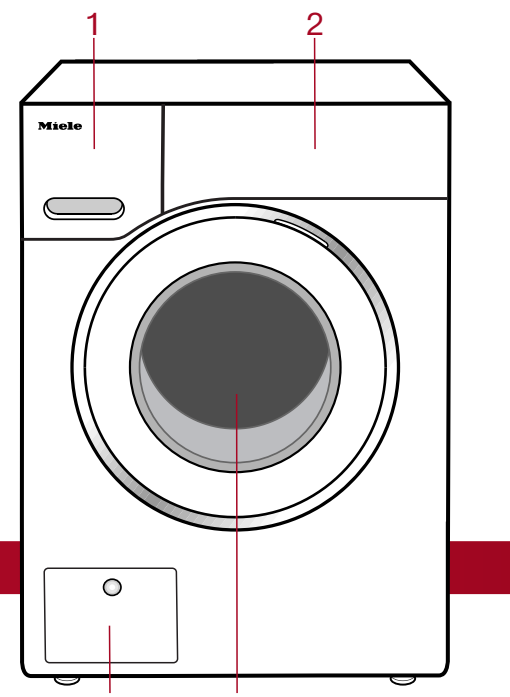
**Selecting a temperature and spin speed**  
The wash program's pre-set temperature and spin speed light up brightly. The choice of temperatures and spin speeds selectable for the wash program light up dimly.

- Touch the sensor button for the temperature desired. It will then light up brightly.
- Touch the sensor button for the spin speed desired. It will then light up brightly.

**Selecting options**  
The selection of options available for the wash program lights up dimly.

- Touch the sensor button for the required option. It will then light up brightly.

**Tip:** You can select multiple options for a single wash program.



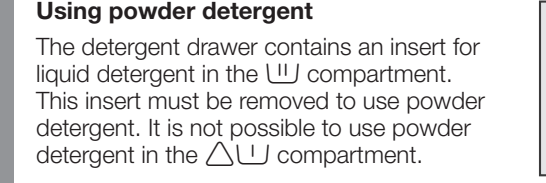
- 1 Detergent dispenser drawer
- 2 Control panel
- 3 Drain filter
- 4 Door

## Starting a program

**5. Add detergent**  
There are several options for adding detergent to the washing machine.

**CapDosing**  
If you selected CapDosing when setting the program, detergent will be dispensed via the capsule for this wash program.

**Using powder detergent**  
The detergent drawer contains an insert for liquid detergent in the  $\Delta$  compartment. This insert must be removed to use powder detergent. It is not possible to use powder detergent in the  $\Delta$  compartment.



**Filling with detergent**  
This washing machine requires particularly efficient detergent. Add detergent in accordance with the value in the pull-down dosage display.

Pull out the detergent drawer and add detergent to the compartments.

- Chlorine bleach for removing stains or liquid detergent for the pre-wash
- Detergent for the main wash, including Soak if selected
- Fabric softener, liquid starch, or caps

**Using chlorine bleach**  
Damage due to chlorine bleach. Textiles may be discolored or their fibers damaged. Only use chlorine bleach on suitable textiles.

Chlorination must be activated in the settings before chlorine bleach is first used.

The Pre-wash option must not be selected.

- Pour max. 1/4 cup (60 ml) of bleach into the  $\Delta$  chamber.

The chlorine bleach is added automatically 10 minutes before the end of the main wash.

**6. Start the program**  
Touch the flashing Start/Add laundry sensor button.  
The door will lock and the wash program will start.

**Adding laundry during a program sequence**  
Laundry can be added or removed at any time, provided that the  $\Delta$  symbol is not illuminated on the control field.

- Touch the Start/Add laundry sensor button.

Rotating bars  $\Delta$ ...  $\Delta$ ...  $\Delta$  appear on the time display.  
If the word **Add** appears on the time display, the door can be opened.

- Open the door and add or remove laundry.
- Close the door.
- Touch the Start/Add laundry sensor button.

The wash program will continue.

**Changing a program (safety lock)**  
A program, temperature, spin speed, or selected options cannot be changed once the machine has been successfully started. This prevents the machine being operated unintentionally, e.g., by children.

**Canceling a program**  
You can cancel a wash program at any time after it has started.

- Turn the program selector to the position.
- Turn the program selector to any position.

Rotating bars  $\Delta$ ...  $\Delta$ ...  $\Delta$  or **-D-** appear on the time display. The water is pumped away and the door lock is then released.

**7. Program end**  
The door is locked in the Anti-crease phase.  
Turn the program selector to the position.  
**-D-** appears on the time display and the  $\Delta$  indicator light goes out. The door will unlock automatically.

**Tip:** After the Anti-crease phase, the door will unlock automatically.

- Take hold of the door and pull it open.
- Remove the laundry.

Items left in the drum could discolor other items in the next wash or become discolored themselves.  
Remove all items from the drum.

- Check the folds in the door seal for any foreign objects.

**Tip:** Leave the door slightly open.  
If you used a capsule, remove it from the detergent drawer.  
**Tip:** Leave the detergent drawer slightly open.

**8. Delay Start/Options**

**Delay Start/SmartStart**  
You can delay the start of a program from 30 minutes up to a maximum of 24 hours. This allows you to make use of night-time economy electricity rates, for example.

**Selecting Delay Start**  
Select the wash program required.

- Touch the  $\Delta$  sensor button.

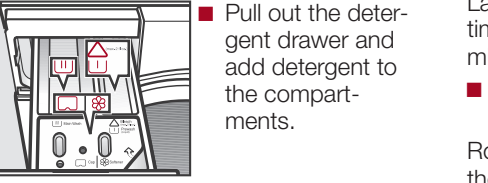
Touch the < or > sensor button repeatedly until the required Delay Start time appears on the time display.

- In the case of settings below 10 hours, the Delay Start time changes in increments of 30 minutes.
- In the case of settings above 10 hours, the delay-start period changes in increments of 1 hour.

- Touch the flashing Start/Add laundry sensor button.

The Delay Start process starts and counts down on the time display.

**SmartStart - Setting the time period**  
If the P98 SmartGrid programmable function is activated, the function of the sensor button changes. The time display no longer shows the Delay Start period; instead, it shows the time period in which your washing machine can be started automatically. The procedure for setting this is the same as for setting the time for Delay Start. For additional information, please refer to the separate operating instructions supplied.



**9. Options**  
Options are selected and deselected using the relevant sensor buttons in the control field.

**Heavy soiled**  
For laundry that is very heavily soiled. The extended wash duration enhances the stain-removing effect.

**Lightly soiled**  
For slightly soiled fabrics that are not stained. The wash duration is reduced.

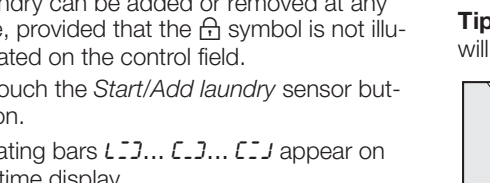
**SoftSteam**  
In order to reduce creasing, the laundry undergoes a smoothing process at the end of the program. Reducing the maximum load by 50% will give a better result. Please note the load information in the display. Small loads achieve a better result.

without SoftSteam	with SoftSteam
Full load	→ Half load
Half load	→ Small load
Small load	→ Very small load

The garments must be suitable for drying in a tumble dryer  $\Delta$  and suitable for ironing  $\Delta$ .

**Buzzer**  
A buzzer sounds at the end of the program. The buzzer sounds until the washing machine is switched off.

**10. Environmental information**  
The washing machine is designed to be energy efficient. For more information, please refer to the separate operating instructions.



**11. Additional information**  
For more information, please refer to the separate operating instructions.

**12. Troubleshooting**  
For more information, please refer to the separate operating instructions.

**13. Maintenance**  
For more information, please refer to the separate operating instructions.

**14. Contact**  
For more information, please refer to the separate operating instructions.

## Delay Start/Options

**Delay Start/SmartStart**  
You can delay the start of a program from 30 minutes up to a maximum of 24 hours. This allows you to make use of night-time economy electricity rates, for example.

**Selecting Delay Start**  
Select the wash program required.

- Touch the  $\Delta$  sensor button.

Touch the < or > sensor button repeatedly until the required Delay Start time appears on the time display.

- In the case of settings below 10 hours, the Delay Start time changes in increments of 30 minutes.
- In the case of settings above 10 hours, the delay-start period changes in increments of 1 hour.

- Touch the flashing Start/Add laundry sensor button.

The Delay Start process starts and counts down on the time display.

**SmartStart - Setting the time period**  
If the P98 SmartGrid programmable function is activated, the function of the sensor button changes. The time display no longer shows the Delay Start period; instead, it shows the time period in which your washing machine can be started automatically. The procedure for setting this is the same as for setting the time for Delay Start. For additional information, please refer to the separate operating instructions supplied.



**15. Additional information**  
For more information, please refer to the separate operating instructions.

**16. Contact**  
For more information, please refer to the separate operating instructions.

**17. Maintenance**  
For more information, please refer to the separate operating instructions.

**18. Troubleshooting**  
For more information, please refer to the separate operating instructions.

**19. Environmental information**  
The washing machine is designed to be energy efficient. For more information, please refer to the separate operating instructions.

**20. Additional information**  
For more information, please refer to the separate operating instructions.

**21. Contact**  
For more information, please refer to the separate operating instructions.

**22. Maintenance**  
For more information, please refer to the separate operating instructions.

**23. Troubleshooting**  
For more information, please refer to the separate operating instructions.

**24. Additional information**  
For more information, please refer to the separate operating instructions.

**25. Contact**  
For more information, please refer to the separate operating instructions.

**26. Environmental information**  
The washing machine is designed to be energy efficient. For more information, please refer to the separate operating instructions.



## Program overview

Program	Temperature	Speed	Load
<b>Normal</b> Cotton, linen, and mixed-fiber fabrics made of both cotton and linen.	Hot+, Hot, Warm+, Warm, Cold	Max.	<b>Full load</b> (17.6 lb/8 kg) <b>Small load</b> (6.6 lb/3 kg)
<b>Delicates</b> For delicate fabrics made from synthetic fibers.	Hot+, Hot, Warm+, Warm, Cold	Med, Slow,	<b>Full load</b> (17.6 lb/8 kg) <b>Small load</b> (4.4 lb/2 kg)
<b>Sanitize</b> Cotton or linen fabrics with direct skin contact or for which special hygiene requirements apply.	Sani Warm+, Warm, Cold	Max, High,	<b>Full load</b> (17.6 lb/8 kg) <b>Small load</b> (4.4 lb/2 kg)
<b>Handwash</b> For delicate fabrics which are only suitable for hand washing.	Warm+, Warm, Cold	High, Med, Slow,	<b>Small load</b> (4.4 lb/2 kg)
<b>Dress Shirts</b> Pre-treat collars and cuffs depending on the level of soiling.	Hot+, Hot, Warm+, Warm, Cold	Med, Slow,	<b>Small load</b> (4.4 lb/2 kg)
<b>Darks/Denims</b> Black and dark garments made from cotton, mixed fibers, and denim.	Warm+, Warm, Cold	High, Med, Slow,	<b>Small load</b> (4.4 lb/2 kg)
<b>MobileStart</b> The Miele app is used to select programs and operate the appliance.	Warm+, Warm, Cold	High, Med, Slow,	<b>Half load</b> (7.7 lb/3.5 kg)
<b>Express</b> Cotton fabrics that have hardly been worn or are only very lightly soiled.	Warm+, Warm, Cold	Max, High,	<b>Full load</b> (17.6 lb/8 kg)
<b>Extra White</b> For white fabrics made of cotton or linen without special hygiene requirements.	Hot+	Med, Slow,	<b>Small load</b> (5.5 lb/2.5 kg)
<b>Outdoor</b> Performance outerwear (e.g., jackets and pants) made from membrane fabric such as Gore-Tex®, SYMPATEX®, WINDSTOPPER®, etc.	Warm+, Warm, Cold	High, Med, Slow,	<b>Small load</b> (5.5 lb/2.5 kg)
<b>Proofing</b> Treating microfiber fabric, ski wear, or table linens/drapes made from mainly synthetic fibers to provide a finish which is resistant to water and dirt.	Warm+, Warm, Cold	High, Med, Slow,	<b>Small load</b> (5.5 lb/2.5 kg)
<b>Drain/Spin</b> Drain only: set spin speed to . Make sure you select the appropriate spin speed.	Cold	Max, Med, Slow,	<b>Small load</b> (5.5 lb/2.5 kg)

◀ fold here

## Detergent

**Detergents recommended by Miele**

	Miele Detergents		Miele Capsules		
	UltraWhite	UltraColor			
Normal	✓	✓	-	✓	✓
Delicates	-	✓	✓	✓	-
Sanitize	✓	-	-	✓	✓
Handwash	-	-	✓	✓	-
Dress Shirts	✓	✓	-	✓	✓
Darks/Denims	-	✓	-	✓	-
Express	-	✓	-	✓	-
Extra White	✓	✓	✓	✓	✓
Outdoor	-	-	✓	-	-
Proofing	-	-	-	✓	-

✓ Recommendation      Special-purpose detergents (e.g., Wool-Care)  
 - No recommendation      Fabric care (e.g., fabric softener)  
    Additives (e.g., booster)

PROGRAM OVERVIEW

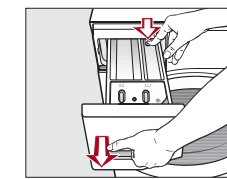
◀ fold here

## Cleaning and care

### Cleaning the detergent drawer

Washing at low temperatures and the use of liquid detergent can lead to a build-up of bacteria in the detergent drawer.

- Clean the entire drawer at regular intervals for hygiene reasons, even if you are using the TwinDos system exclusively.



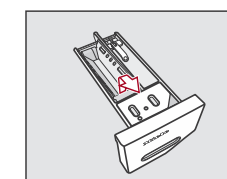
- Pull out the detergent drawer until a resistance is felt.

- Press down the release button and, at the same time, pull the drawer completely out of the machine.

- ✓ Recommendation      Special-purpose detergents (e.g., Wool-Care)
- No recommendation      Fabric care (e.g., fabric softener)
- Additives (e.g., booster)

### Removing and cleaning the insert for liquid detergents

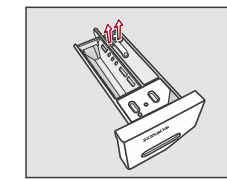
An insert for liquid detergents is located in the compartment of the detergent drawer.



- Remove the insert. Clean the insert thoroughly with warm water.

### Cleaning the siphon inside the compartment

Compartment 1 has a siphon for better dispensing of the chlorine bleach.



- Remove the release catch.

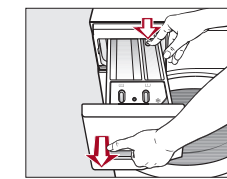
◀ fold here

## Cleaning and care

### Cleaning the detergent drawer

Washing at low temperatures and the use of liquid detergent can lead to a build-up of bacteria in the detergent drawer.

- Clean the entire drawer at regular intervals for hygiene reasons, even if you are using the TwinDos system exclusively.



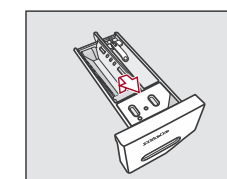
- Pull out the detergent drawer until a resistance is felt.

- Press down the release button and, at the same time, pull the drawer completely out of the machine.

- ✓ Recommendation      Special-purpose detergents (e.g., Wool-Care)
- No recommendation      Fabric care (e.g., fabric softener)
- Additives (e.g., booster)

### Removing and cleaning the insert for liquid detergents

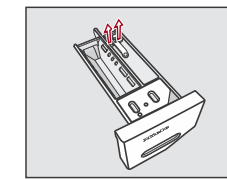
An insert for liquid detergents is located in the compartment of the detergent drawer.



- Remove the insert. Clean the insert thoroughly with warm water.

### Cleaning the siphon inside the compartment

Compartment 1 has a siphon for better dispensing of the chlorine bleach.

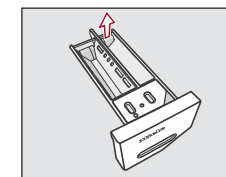


- Remove the release catch.

◀ fold here

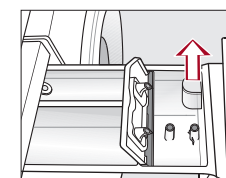
## Cleaning and care

### Cleaning the siphon inside the compartment



- Remove the siphon and clean under warm running water.

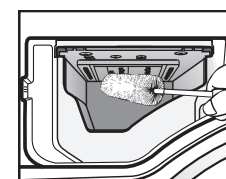
### Cleaning the siphon inside the compartment



- Remove the siphon from the compartment and clean under warm running water.

- Clean all compartments with warm water.

### Cleaning the detergent-drawer housing



- Use a bottle brush to remove detergent residues and limescale from the jets inside the detergent-drawer housing.

- Replace the detergent drawer.

**Tip:** Leave the detergent drawer slightly open to allow it to dry.

### Sanitize info (cleaning the drum)

Washing at low temperatures and/or using liquid detergent can cause bacteria and unpleasant odors to build up in the washing machine. Use the *Sanitize* program to clean the washing machine. Clean the drum no later than the point at which the indicator light and *!* light up on the time display.

◀ fold here

## Frequently asked questions ...

Problem	Possible cause and solution
<b>The control field remains dark.</b>	<ul style="list-style-type: none"> <li>There is no power to the machine.</li> <li>■ Check whether the plug is plugged in.</li> <li>■ Check whether the fuse has tripped.</li> </ul> <p>The washing machine has switched off automatically to save energy.</p> <ul style="list-style-type: none"> <li>■ Switch the washing machine on again by turning the program selector.</li> </ul>
<b>F and 34 alternate on the time display.</b>	<p>The door is not closed properly. The door lock could not engage.</p> <ul style="list-style-type: none"> <li>■ Close the door again.</li> <li>■ Start the program again.</li> </ul> <p>If the fault message appears again, contact Miele Service.</p>
<b>After the appliance is switched on, UP appears on the time display.</b>	<p>An update is available for the washing machine. See "Programmable functions – P99 RemoteUpdate" for more information.</p>
<b>The fault indicator light  lights up. F and ! alternate on the time display and the buzzer sounds.</b>	<p>The drain is blocked or restricted. The drain hose has been fixed too high.</p> <ul style="list-style-type: none"> <li>■ Clean the drain filter and the drain pump.</li> <li>■ The maximum drain height is 1 m.</li> </ul>
<b>The fault indicator light  lights up. F and ! alternate on the time display and the buzzer sounds.</b>	<p>The water intake is blocked or restricted.</p> <ul style="list-style-type: none"> <li>■ Check whether the faucet is turned on properly.</li> <li>■ Check whether the inlet hose is kinked.</li> <li>■ Check whether there is sufficient water pressure.</li> </ul> <p>The filter in the water intake is blocked.</p> <ul style="list-style-type: none"> <li>■ Clean the filter.</li> </ul>
<b>The fault indicator light  lights up. F and ! alternate on the time display and the buzzer sounds.</b>	<p>The water protection system has reacted.</p> <ul style="list-style-type: none"> <li>■ Close the faucet.</li> <li>■ Contact Miele Service.</li> </ul>

CLEANING AND CARE

◀ fold here

## Frequently asked questions ...

Problem	Possible cause and solution
<b>F and XXX alternate on the time display and the buzzer sounds.</b>	<p>There is a fault.</p> <ul style="list-style-type: none"> <li>■ Disconnect the washing machine from the power supply. Unplug the appliance or switch off the breaker.</li> <li>■ Wait <b>at least 2 minutes</b> before reconnecting the washing machine to the power supply.</li> <li>■ Switch the washing machine on again.</li> <li>■ Restart the program.</li> </ul> <p>If the fault message appears again, contact Miele Service.</p>
<b>-0- lights up on the time display.</b>	<p>The program selector was moved to a different position after the program had started.</p> <ul style="list-style-type: none"> <li>■ Turn the program selector back to the original position.</li> </ul>
<b>The  indicator light lights up.</b>	<p>Excessive foam has built up during washing.</p> <ul style="list-style-type: none"> <li>■ Use less detergent next time and follow the manufacturer's instructions on dosage given on the packaging.</li> </ul>
<b>The  indicator light lights up and ! appears on the time display.</b>	<p>When washing, a wash program using a temperature of <i>Hot+</i> has not been run for a long time.</p> <ul style="list-style-type: none"> <li>■ Run the <i>Sanitize</i> program using the Miele Machine Cleaner or a universal powder detergent.</li> </ul> <p>The washing machine is cleaned which prevents bacteria and odor buildup.</p>
<b>F and 37 alternate on the time display.</b>	<p>The <i>SoftSteam</i> option which runs at the end of the program could not be carried out properly.</p> <ul style="list-style-type: none"> <li>■ Check whether the washing machine is aligned correctly (see "Installation – Leveling the machine").</li> <li>■ Check whether the maximum drain height of 3.3 ft (1 m) has been exceeded.</li> </ul> <p>If the fault message appears again, contact Miele Service. The washing machine can still be used, but without the <i>SoftSteam</i> option.</p>

FREQUENTLY ASKED QUESTIONS ...

◀ fold here

## Quick Start Guide

### Washing machine



This Quick Start Guide is not a substitute for the operating instructions supplied with the appliance! It is essential to familiarize yourself with the washing machine before using it for the first time. Please read the operating instructions carefully and pay particular attention to the IMPORTANT SAFETY INSTRUCTIONS.

en-US

M.-Nr. 11 622 790 / 00

◀ fold here

## Miele