

INSTALLATION

BEFORE INSTALLATION

Inspect the sink for any visible defects. Do not install the sink if defects are found. Call customer service at 1-614-777-5004 for assistance.

Remove the drain by unscrewing the screw from the drain until it is completely separated from the sink.

TOP MOUNT INSTALLATION

1. Trace the Opening

- Locate the top mount template in the box.
- Carefully cut along the dotted lines. Keep the inside portion of the template. It contains important information concerning the care and maintenance for your sink.
- Place the template on the counter where you would like your sink to be installed. When installing the template, make sure that the tank will not interfere with cabinet doors or panels. Ensure that there is enough space for the water supply installation. Fix the template on the counter using masking tape. Trace the inside of the template meticulously with a pencil. Remove the template.

OR

- Turn the sink upside down and place it on top of the counter. Note the location of cabinet doors and panels to ensure that they will be compatible with the sink installation.
- Ensure that there is enough space for the water supply installation.
- Trace the outer edge of the sink with a pencil, then remove the sink.
- Measure 7 mm from the initial sink measurement and trace another line on the inside of the drawing. This second line will be the cutting line.

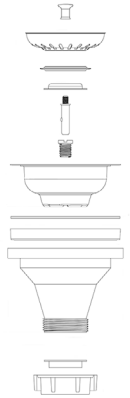
2. Cut the Opening

- Using the drill, make a small starting hole of about 1.2 cm (0.5 in) on the inside of the cutting line. Drill a second time in this same hole with a larger bit so the jigsaw can be inserted properly.
- Put masking tape on the outer side of the cutting line. This will protect the counter from scratches and shattered fragments caused by the jigsaw.
- Using the jigsaw, trim the inside of the cutting line.
- Insert the sink and adjust the opening if required.

INSTALLATION

3. Drain Installation

- Insert the metal strainer into the rubber seal, and then into the draining hole.
- Install the rubber gasket and the main drain body underneath the sink.
- Using the screw, tighten the main drain body and the metal strainer into place.
- Install the basket on top of the metal strainer.
- Repeat the same procedure for the installation of the second draining hole (double and triple bowls only).
- Note: plumber putty is not required for the installation of these drains.



4. Insert Sink

Verify that the sink fits perfectly. The lip of the sink should be resting on the countertop.

5. Insert Clips

Insert clips into the rails.

6. Fix the Clips

Fix the clips into place.

7. Seal with Silicone-based Sealant.

Seal with silicone-based sealant all around the sink.

8. Pipe Installation

Install the faucet following the manufacturer's instructions.

NOTE: Excess sealant must be removed promptly with a suitable clean-up solvent recommended for use on both the counter and sink to ensure damage does not occur.

INSTALLATION

UNDERMOUNT INSTALLATION

1. Trace the Opening

- Locate the undermount installation template in the box.
- Cut carefully along the dotted lines. Keep the inside portion of the template. It contains important information concerning the care and maintenance for your sink.
- Place the template on the counter where you would like your sink to be. When installing the template, make sure that the tank will not interfere with cabinet doors or panels. Ensure that there is enough space for the water supply installation.
- Fix the template on the counter using masking tape.
- Trace the inside of the template meticulously with a pencil.
- Remove the template.

2. Cut the Opening

- Using a drill, make a small starting hole of about 1.2 cm (0.5 in) inside of the cutting line.
- Drill a second time in this same hole with a larger bit so the jigsaw can be inserted properly.
- Put masking tape on the outer side of the cutting line. This will protect the counter from scratches and shattered fragments caused by the jigsaw.
- Using the jigsaw, trim the inside of the cutting line.

3. Pre-Drill for the Mounting Brackets

- Drill into the bottom of the countertop to create holes for the mounting brackets.
- Use the appropriate drill bit for the material of the countertop.
- Use epoxy to adhere the plastic cover to the hole. This will help hold the weight of the sink.

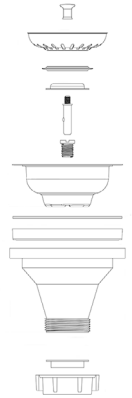
4. Build a Support Frame

- Build a support frame to hold the sink.
- Make sure there is enough space for the rails on the support frame.

INSTALLATION

5. Drain Installation

- Insert the metal strainer into the rubber seal, and then into the draining hole.
- Install the rubber gasket and the main drain body underneath the sink.
- Using the screw, tighten the main drain body and the metal strainer into place.
- Install the basket on top of the metal strainer.
- Repeat the same procedure for the installation of the second draining hold (double and tripe bowls only).
- Note: Plumber putty is not required for the installation of these drains.



6. Insert the Sink

Insert the sink on the support frame. Apply silicone-based sealant to each corner between the frame and the sink.

7. Seal with Silicone-based Sealant

- Apply silicone-based sealant on the border of the sink and install the countertop. Remove excess sealant.
- Install the brackets
- The bracket should rest against the countertop and the lip of the sink.

8. Pipe Installation

Install the faucet following the manufacturer's instructions. Make proper water and waste pipe connections.

NOTE: Excess sealant must be removed promptly with a suitable clean-up solvent recommended for use on both the counter and sink to ensure damage does not occur.