

# PARTS LIST / LISTE DES PIÈCES / LISTA DE PIEZAS

ITEM NO. / ARTICLE NO. / ARTICULO NO : S458-410

DESCRIPTION / DESCRIPCIÓN : DRESSER / COMMODE / TOCADOR

**⚠ WARNING**

Serious or fatal crushing injuries can occur from furniture tip-over. To help prevent tip-over:

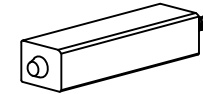
- Install tipover restraint provided.
- Place heaviest items in the lowest drawers.
- Do not set TV's or other heavy objects on top of this product, unless the product is specifically designed to accommodate them.
- Never allow children to climb or hang on drawers, doors, or shelves.
- Never open more than one drawer at a time.

Use of tip-over restraints may only reduce, but not eliminate the risk of tip-over.  
*This is a permanent label. Do not remove!*



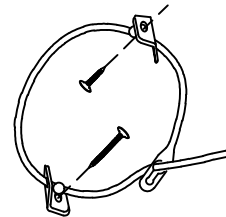
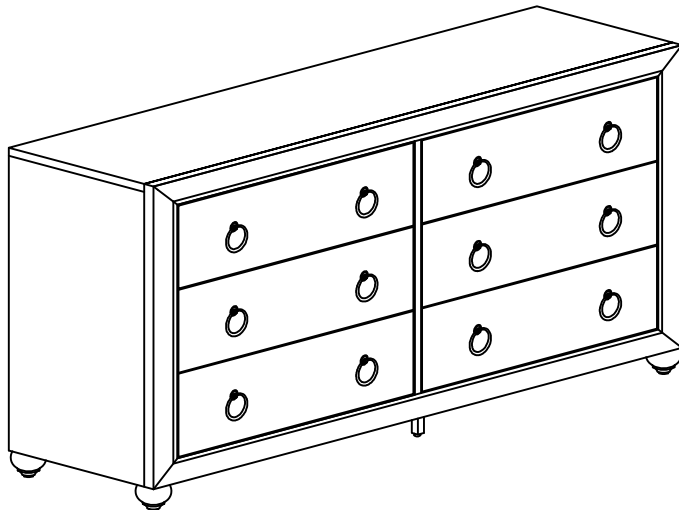
A

x4 Bun Foot \*  
x4 Pied en forme d'oignon  
x4 Pata redonda



B

x1 Center Leg \*  
x1 Pattes centrales  
x1 Patas centrales



C

x1 Tipping restraint  
x1 Liste des pièces de quincaillerie antibasculement  
x1 Abrazadera antivuelco

*\*Replaceable Part*

# ASSEMBLY INSTRUCTIONS / NOTICE DE MONTAGE / INSTRUCCIONES DE MONTAJE

ITEM NO. / ARTICLE NO. / ARTICULO NO : S458-410

DESCRIPTION / DESCRIPCIÓN : DRESSER / COMMODE / TOCADOR

## ⚠ WARNING

Serious or fatal crushing injuries can occur from furniture tip-over. To help prevent tip-over:

- Install tipover restraint provided.
- Place heaviest items in the lowest drawers.
- Do not set TV's or other heavy objects on top of this product, unless the product is specifically designed to accommodate them.
- Never allow children to climb or hang on drawers, doors, or shelves.
- Never open more than one drawer at a time.

Use of tip-over restraints may only reduce, but not eliminate the risk of tip-over.

This is a permanent label. Do not remove!



### STEP 1

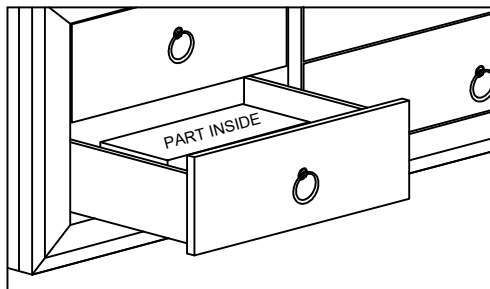
Fasten The Leg As Shown.

### ÉTAPE 1

Attachez la jambe Comme Indiqué.

### PASO 1

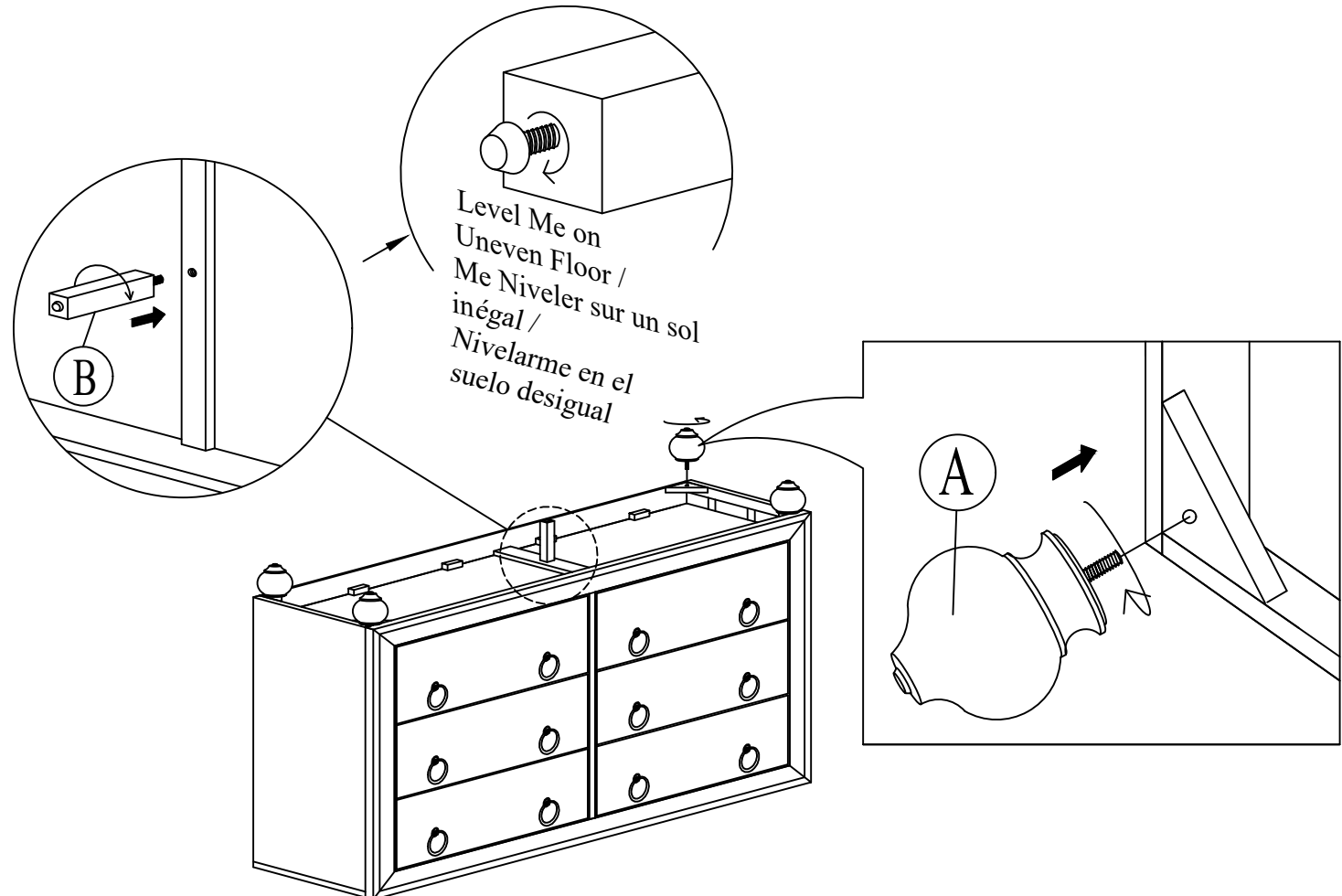
Sujete la Pierna Como Se Muestra .



BUN FEETS (PACKED INSIDE DRAWER)

PIED EN FORME D'OIGNON ( EMBALLÉS À L'INTÉRIEUR DU TIROIR )

PATA REDONDA ( EMPAQUETADO DENTRO DEL CAJÓN )



*\*Replaceable Part*

# ASSEMBLY INSTRUCTIONS / NOTICE DE MONTAGE / INSTRUCCIONES DE MONTAJE

ITEM NO. / ARTICLE NO. / ARTICULO NO : S458-410

DESCRIPTION / DESCRIPCIÓN : DRESSER / COMMODE / TOCADOR

## ⚠ WARNING

Serious or fatal crushing injuries can occur from furniture tip-over. To help prevent tip-over:

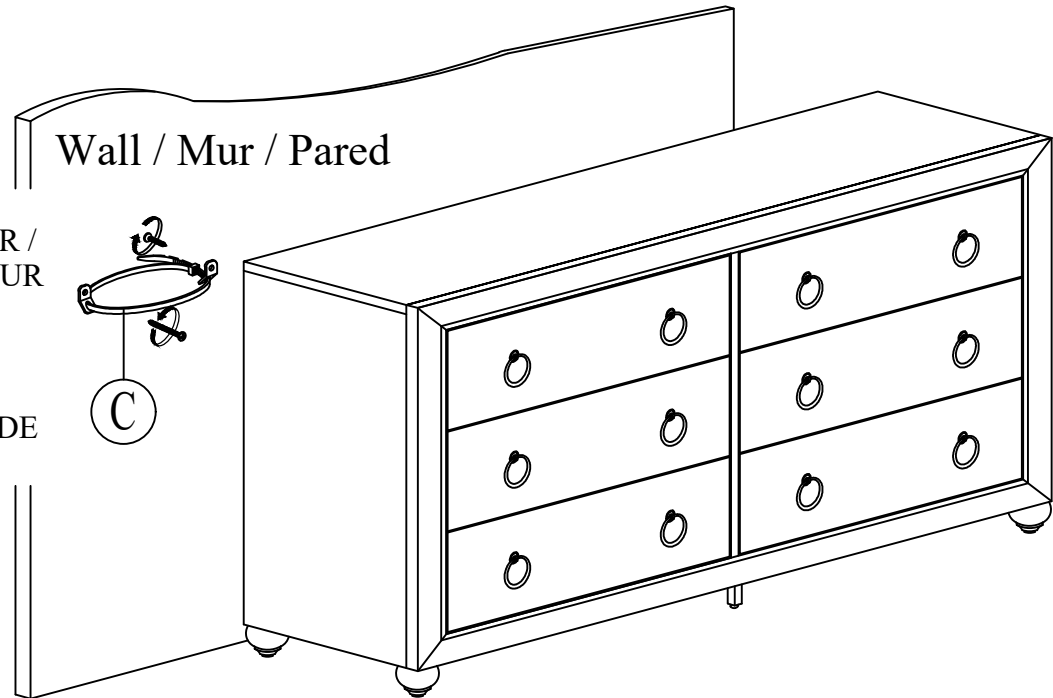
- Install tipover restraint provided.
- Place heaviest items in the lowest drawers.
- Do not set TV's or other heavy objects on top of this product, unless the product is specifically designed to accommodate them.
- Never allow children to climb or hang on drawers, doors, or shelves.
- Never open more than one drawer at a time.

Use of tip-over restraints may only reduce, but not eliminate the risk of tip-over.

*This is a permanent label. Do not remove!*



AFFIX TO WALL  
BEHIND DRESSER /  
KENAFFIX AU MUR  
DERRIÈRE LA  
COMMODE /  
KENAFFIX A LA  
PARED DETRÁS DE  
LA CÓMODA



*\*Replaceable Part*

# REPLACEABLE PART / PARTIE REMPLAÇABLE / PARTE REEMPLAZABLE

ITEM NO. / ARTICLE NO. / ARTICULO NO : S458-410

DESCRIPTION / DESCRIPCIÓN : DRESSER / COMMUNE / TOCADOR

**⚠ WARNING**

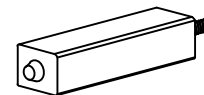
Serious or fatal crushing injuries can occur from furniture tip-over. To help prevent tip-over:

- Install tipover restraint provided.
- Place heaviest items in the lowest drawers.
- Do not set TV's or other heavy objects on top of this product, unless the product is specifically designed to accommodate them.
- Never allow children to climb or hang on drawers, doors, or shelves.
- Never open more than one drawer at a time.

Use of tip-over restraints may only reduce, but not eliminate the risk of tip-over.  
*This is a permanent label. Do not remove!*



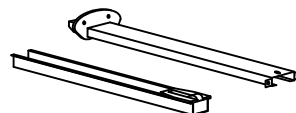
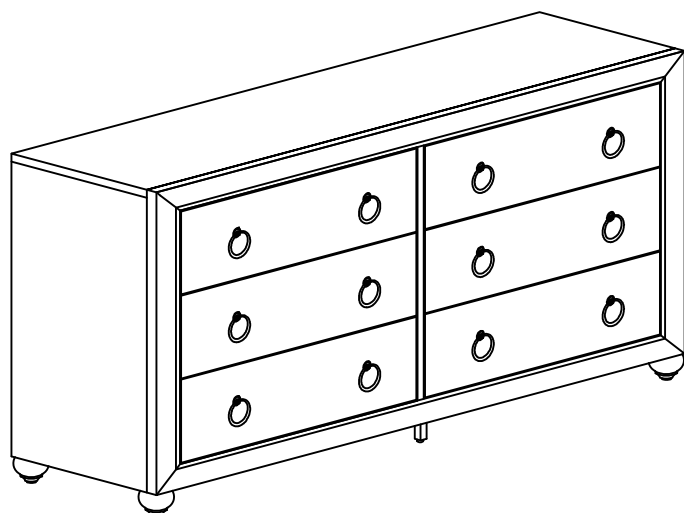
x12 RS458-410- PULL \*  
Pull with Screw  
Tirer + vis  
Tire + Tornillo



x1 RS458-410-CELEG \*  
Center leg with Leveler  
Pattes centrales  
Patas centrales



x4 RS458-410-FOOT \*  
Bun Foot  
Pied en forme d'oignon  
Pata redonda



x6 RS458-410-DG \*  
Drawer Glide  
Glissière  
Carril de deslizamiento



x4 RC-BR-NAIL \*  
Brown Plastic Nail  
Clou en plastique  
Clavo de plástico

*\*Replaceable Part*