

Air Purifier

Quick Guide

AX350*935**

- Thank you for purchasing this Samsung Air Purifier.
- Before operating this unit, please read this manual carefully and retain it for future reference.

SAMSUNG

Safety Information

READ AND SAVE THESE INSTRUCTIONS

California Proposition 65 Warning (US)

 **WARNING:** Cancer and Reproductive Harm - www.P65Warnings.ca.gov.

These safety precautions are for owner's safety and preventions of property damage. Therefore, please read this manual thoroughly before using your product.

 **WARNING**

Hazards or unsafe practices that may result in severe personal injury or death.

 **CAUTION**

Hazards or unsafe practices that may result in minor personal injury or property damage.

Failure to follow the instructions may result in electric shock, injury, fire, breakdown or explosion.

FOR GENERAL

This appliance can be used by children aged from 8 years and above and persons with reduced physical, sensory or mental capabilities or lack of experience and knowledge if they have been given supervision or instruction concerning use of the appliance in a safe way and understand the hazards involved. Children shall not play with the appliance.

Cleaning and user maintenance shall not be made by children without supervision.

This appliance has a polarized plug (one blade is wider than the other). To reduce the risk of electric shock, this plug is intended to fit a polarized outlet only one way. If the plug does not fit fully in outlet, reverse the plug. If it still does not fit, contact a qualified electrician.

- Do not attempt to defeat this safety feature.

Product installation must be handled by official Samsung service personnel or a certified local technician to avoid power cord or plug damage, which can be dangerous.

Disconnect the air purifier from the power source before cleaning or repairing.

To reduce the risk of fire or electric shock, do not use this fan with any solid-state speed control device.

Not suitable for use with solid-state speed controls.

FOR INSTALLATION

 **WARNING**

Only connect to a socket that can provide the rated power supply. Do not use the socket with other products. Do not extend the power cord.

- Using a multi-socket with other products or extending the power cord may cause electric shock or fire.
- Connect power matching to voltage/frequency/rated current conditions.

Do not install the air purifier near a heat source and flammable objects, or in areas that are highly humid or dusty. Avoid exposure to oil, gas, direct sunlight and water.

 **CAUTION**

Make sure that the power cord is not pressed under the product.

FOR POWER SUPPLY

 **WARNING**

Please contact your local Samsung Service Center if the power plug or cord is damaged.

If the supply cord is damaged, it must be replaced by the manufacturer, its service agent or similarly qualified persons in order to avoid a hazard.

Make sure that the power plug is securely fitted in the socket. Do not use it when the plug or cord is damaged.

When you disconnect the power cord, pull it by the plug. Do not pull the cord itself.

Do not forcibly bend, pull, twist or tie the power cord into a knot. Do not hang it on a metallic object or put a heavy object on it. Do not put the cord in a small gap between heavy objects, or forcibly push it behind the air purifier.

FOR USING

 **WARNING**

If the product is exposed to water, immediately disconnect it from the power source and contact your local Samsung Service Center.

If you notice a noise, burning smell or smoke from the product, immediately stop using it and contact your local Samsung Service Center.

If there is gas leakage (e.g., city gas or propane gas) in the location where the product is used, do NOT touch the product or power cord. Immediately open the windows to ventilate the location, and then contact the gas service provider's agent or a qualified technical expert for assistance.

- Do not turn the ventilation fan on.

Please contact your local Samsung Service Center when you require repair service.

Do not handle the power plug with wet hands.

Store the plastic package away from children or discard it according to the law.

- Follow instructions to protect children from a risk of suffocation.

Do not insert your finger or other objects into the air inlet or outlet.

- Take special care to protect children from injury.
- Take special care not to injure your fingers by putting them between the front panel and the product when the front panel is closing.

If the power plug area has contacted water, completely dry it before using the air purifier again.

If any of the electric components inside the air purifier has contacted liquid or water, disconnect the product from the power source and contact your local Samsung Service Center.

Do NOT attempt to repair or modify the product.

- Use only the standard rated fuse.

Safety Information

CAUTION

Operate the air purifier with no obstacles in the vicinity.

- At least 24 inches from both sides of the product, at least 10 inches from the product inlet, and at least 39 inches from the product outlet
- The product is designed to intake, purify, and discharge polluted air. If there is any obstacle in the vicinity, the purification capacity may decrease.

Do not step on the product or place other objects on it (laundry, candles, burning cigarettes, plates, medicine, metal items, air fresheners, etc.).

Do not use bug repellent or other spray products on the air purifier.

FOR CLEANING

WARNING

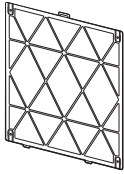
Disconnect the product from the power source when cleaning. Wait for the fan to completely stop before cleaning.

CAUTION

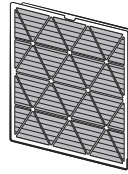
Be sure to cut off all power sources before cleaning or any other maintenance work. Before connecting power after maintenance, be sure to confirm that the product is assembled completely.

Preparation

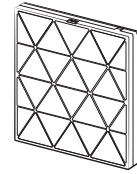
Accessories



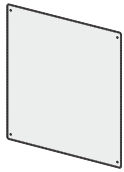
Pre-filter



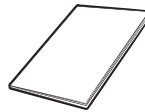
PET Deodorization Filter¹⁾



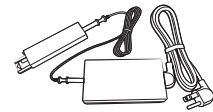
Dust Collecting Filter¹⁾



Pet mesh filter (5 ea)



User Manual

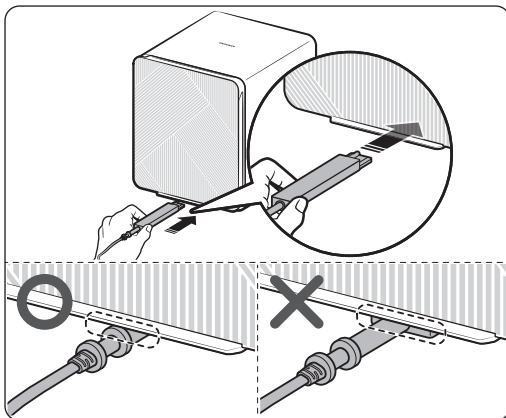


Power adapter

¹⁾ The pet deodorization filter and dust collecting filter cannot be reused by washing them with water.

Connecting the power adapter

To use the air purifier, first connect the power adapter to the main unit.



Check the top/bottom of the power adapter, and then connect it to the port on the rear bottom of the product.

- Push the power adapter all the way in until it clicks into place.

NOTE

- The product will not work if you do not push the power adapter all the way in.

CAUTION

- Exercise caution to ensure that the adapter is not damaged.
- Do NOT use a damaged adapter. It can cause electric shock or fire.

Preparation

Registering the product / Reading the manual / Connecting to Services



- 1 Launch a QR code reader app and scan the QR image on the product.
- 2 Choose the desired menu between product registration, see manual, connect services. If you choose "See manual" you can read the manual of the product you purchased.

Connecting SmartThings



- 1 Launch a QR code reader app and scan the QR image on the product.
- 2 Try connecting the SmartThings app to the product.

Air Purifier Overview

Button unit



01 Mode button

- Short press: Changes the operation mode (Smart, High, Wind-Free, Sleep, Pet)
- 3-second press: Resets the filters
- 5-second press: Activates/deactivates the AP

02 Power button

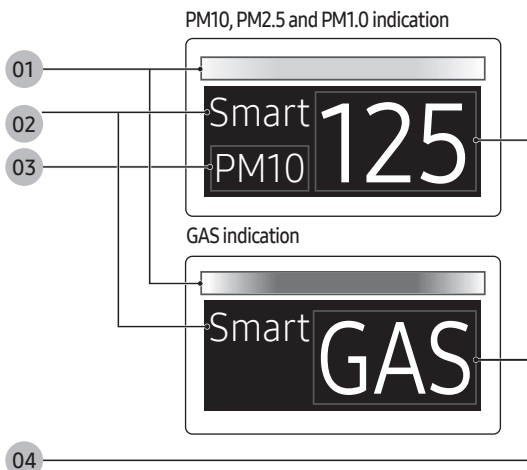
- Short press: Turns on/off the device
- 3-second press: Locks/unlocks the device (When the device is locked/unlocked, the button is shown for 5 seconds on the front display.)

* Mode button + Power button

- 5-second press: Toggles between 1 outlet and 3 outlets (air outlet quantity)

03 Display

Display



01 Shows the PM10, PM2.5, PM1.0 and GAS levels with colour indicators

02 Shows the operation mode

03 Shows the PM10, PM2.5 and PM1.0 status

04 Shows the concentrations of PM10, PM2.5 and PM1.0 and the GAS status

NOTE

- PM10: Dust in the air with a diameter of 10 μm or less
 - Fine particles about 1/5 of the diameter of a human hair
- PM2.5: Dust in the air with a diameter of 2.5 μm or less
 - Fine particles about 1/20 of the diameter of a human hair
- PM1.0: Dust in the air with a diameter of 1.0 μm or less
 - Fine particles about 1/50 of the diameter of a human hair

* Diameter of a human hair: 50–70 μm

The energy efficiency of this ENERGY STAR certified model is measured based on a ratio between the model's CADR for smoke and the electrical energy it consumes, or CADR/Watt.



Qualified model list :
AX350A9350G/AA, AX350A9350N/AA

This product has Wi-Fi capability and requires Internet connectivity and a wireless router to enable interconnection with an Energy Management System, and/or with other external devices, systems or applications

FCC Caution: Any changes or modifications not expressly approved by the party responsible for compliance could void the user's authority to operate this equipment.

This device and its antenna(s) must not be co-located or operation in conjunction with any other antenna or transmitter.

FCC Radiation Exposure Statement:

This equipment complies with FCC radiation exposure limits set forth for an uncontrolled environment.

This equipment should be installed and operated with minimum distance 20cm between the radiator & your body.

IC Radiation Exposure Statement

This equipment complies with IC RSS-102 radiation exposure limits set forth for an uncontrolled environment. This equipment should be installed and operated with minimum distance 20cm between the radiator & your body.

This device complies with Industry Canada licence-exempt RSS standard(s). Operation is subject to the following two conditions: (1) this device may not cause harmful interference and (2) this device must accept any interference received, including interference that may cause undesired operation.

QUESTIONS OR COMMENTS?

COUNTRY	CALL	OR VISIT US ONLINE AT
U.S.A - Consumer Electronics - Mobile Phones	1-800-SAMSUNG (726-7864) 1-844-SAM-PAYS (726-7297)	www.samsung.com/us/support
CANADA	1-800-SAMSUNG(726-7864) 1-844-SAM-PAYS (726-7297)	www.samsung.com/ca/support (English) www.samsung.com/ca_fr/support (French)