



## OWNER'S MANUAL

# VACUUM CLEANER

---

Read this owner's manual thoroughly before operating the appliance and keep it handy for reference at all times.

### ENGLISH

A91\*\*\*\*\*



MFL69883668  
Rev.00\_031621

[www.lg.com](http://www.lg.com)

Copyright © 2021 LG Electronics Inc. All Rights Reserved.

## **TABLE OF CONTENTS**

### **3 IMPORTANT SAFETY INSTRUCTIONS**

---

- 3 READ ALL INSTRUCTIONS BEFORE USE
- 3 WARNING STATEMENTS
- 8 CAUTION STATEMENTS

### **9 INSTALLATION**

---

- 9 Product Overview
- 12 Installing the Charging Station
- 15 Storing the Accessories

### **16 OPERATION**

---

- 16 Getting Started
- 17 Charging the Battery
- 18 Using the Nozzles and Tools

### **20 MAINTENANCE**

---

- 20 Cleaning the Appliance
- 22 Cleaning the Nozzle

### **25 TROUBLESHOOTING**

---

- 25 Before Calling for Service

### **27 LIMITED WARRANTY**

---

- 27 USA

### **31 APPENDIX**

---

- 31 U.S. Patent Protection

# IMPORTANT SAFETY INSTRUCTIONS

## READ ALL INSTRUCTIONS BEFORE USE

### Safety Messages

**Your safety and the safety of others are very important.**

We have provided many important safety messages in this manual and on your appliance. Always read and follow all safety messages.



This is the safety alert symbol.

This symbol alerts you to potential hazards that can kill or injure you and others. All safety messages will follow the safety alert symbol and either the word WARNING or CAUTION.

These words mean:



### WARNING

You may be killed or seriously injured if you do not follow instructions.



### CAUTION

You may be injured or cause damage to the product if you do not follow instructions.

All safety messages will tell you what the potential hazard is, tell you how to reduce the chance of injury, and tell you what may happen if the instructions are not followed.

## WARNING STATEMENTS



### WARNING

- To reduce the risk of explosion, fire, death, electric shock, injury or scalding to persons when using this product, follow basic precautions, including the following:

### Technical Safety

- This appliance is not intended for use by persons (including children) with reduced physical, sensory or mental capabilities, or lack of experience and knowledge, unless they have been given supervision or instruction concerning use of the appliance by a person responsible for their safety.
- Do not allow the appliance to be used as a toy. Close attention is necessary when used by or near children.
- Do not allow children to play with or hang on the appliance.
- Do not use the appliance with damaged power cord or plug. The cord must be replaced. If the appliance is not working as it should, has been dropped, damaged, left outdoors, or dropped into water, return it to an LG Electronics service center.
- Do not pull or carry by cord, use cord as a handle, close a door on cord, or pull cord around sharp edges or corners. Do not run appliance over cord. Keep cord away from heated surfaces.
- Do not unplug by pulling on cord. To unplug, grasp the plug, not the cord.
- Place the cords from other appliances out of the area to be cleaned.
- Have servicing performed by a qualified repair person using only identical replacement parts. This will ensure that the safety of the product is maintained.

## 4 IMPORTANT SAFETY INSTRUCTIONS

---

### Battery

- Read all safety warnings and instructions. Failure to follow the warnings and instructions may result in electric shock, fire and/or serious injury.
- Never use the battery, adapter, and the charging station from other appliances with this appliance. Use only the battery and the charging station provided by LG Electronics.
- Use appliances only with specifically designated battery packs. Use of any other battery packs may create a risk of injury and fire.
- Recharge only with the charger specified by the manufacturer. A charger that is suitable for one type of battery pack may create a risk of fire when used with another battery pack.
- Never use the battery, adapter, and the charging station from this appliance with other appliances.
- Unplug the power cord and remove the battery if the appliance will not be used for an extended period of time.
- Do not use modified or damaged batteries.
- When disposing of the battery or the appliance, remove the battery from the appliance and safely dispose of it.
- Do not use a battery pack or appliance that is damaged or modified. Damaged or modified batteries may exhibit unpredictable behavior resulting in fire, explosion or risk of injury.
- Do not disassemble, remove or short-circuit the battery.
- Have the battery replaced when it is no longer able to hold a charge.
- Refer to the **Charging the Battery** section instructions for the method of replacing the battery.
- When disposing of this appliance, follow regulations for disposal of rechargeable lithium-ion batteries.
- Follow all local ordinances and regulations when handling or disposing of the battery.
- Disconnect battery pack before cleaning or servicing.
- Prevent unintentional starting. Ensure the switch is in the off position before connecting to the battery pack, picking up or carrying the appliance. Carrying the appliance with your finger on the switch or energizing an appliance that has the switch on invites accidents.
- Disconnect the battery pack from the appliance before making any adjustments, changing accessories, or storing appliance. Such preventive safety measures reduce the risk of starting the appliance accidentally.
- When battery pack is not in use, keep it away from other metal objects, like paper clips, coins, keys, nails, screws or other small metal objects, that can make a connection from one terminal to another. Shorting the battery terminals together may cause burns or a fire.
- Under abusive conditions, liquid may be ejected from the battery. If this happens, avoid contact. If contact accidentally occurs, flush with water. If liquid contacts eyes, additionally seek medical help. Liquid ejected from the battery may cause irritation or burns.
- Do not modify or attempt to repair the appliance or the battery pack (as applicable) except as indicated in the instructions for use and care.

### Battery Specifications

- One or two batteries are provided. The number of batteries varies depending on the model purchased.
  - **Model Name:** EAC63382204
  - **Type:** Rechargeable Lithium-ion Battery
  - **Rated Capacity:** DC 25.2 V, 2.4 Ah/60.48 Wh(Min. 2.3 Ah/57.96 Wh)

### Installation

- To avoid an electrical shock or fire, do not install, charge or store the appliance where it may be exposed to water, rainfall or high humidity.

- Install, charge and store the appliance in a well-ventilated place.
- Avoid operating the appliance in areas where there is a risk of leakage of flammable gas, industrial oil or metallic dust.
- Do not store or install the appliance, power cord or plug near heating devices or open flames.
- Install the charging station on a firm, level surface.
- To prevent tipping, self-standing mode installations should be anchored to the wall using the provided stand anchoring screw, anchoring block and double-sided tape.
- In wall-mounted mode installations, the charging station should be secured tightly to the wall using the provided wall anchoring screws.
- Use the anchoring screws only when attaching to concrete or similar solid surfaces.
- Never drill into a wall without first checking that the area behind it is free from power conduits, plumbing, vents, or cables.
- Do not use or store the appliance at temperatures below 41 °F (5°C) or above 100 °F (38°C).
- Do not store or install the appliance where it is exposed to temperatures below freezing or exposed to outdoor weather conditions.
- When installing or moving the appliance, be careful not to pinch, crush, or damage the power cord or plug.

## Operation

- Read all instructions before using the appliance, and save these instructions.
- Use only as described in this manual. Use only manufacturer's recommended attachment.
- This appliance is designed for normal indoor domestic use only. It is not to be used for any non-residential, commercial, or industrial application.
- Do not use or store the appliance in any outdoor location, garage environment or on wet surface.
- This product should only be used with a 100 V - 240 V~ 50/60 Hz outlet. Make sure to check the power specifications of the place where you intend to use the appliance.
- Do not handle the power cord, plug, or appliance controls with wet hands.
- Wipe any moisture or dirt off the cord or plug with a dry cloth.
- Unplug the power cord using the plug, not the cord. Pulling on the cord can damage it and result in electric shock or fire.
- Never attempt to operate this appliance if it is damaged, malfunctioning, partially disassembled, or has missing or broken parts, including a damaged cord or plug. Take it to an authorized LG Electronics service center or dealer for assistance.
- Do not apply excessive force to the power cord to bend it, or place it under a heavy object as this will damage it.
- Do not use multiple-outlet adapters with this appliance. Make sure to use a power socket with a capacity of 10 A.
- Do not plug the appliance into a damaged or loose outlet.
- Make sure to unplug the power cord when the appliance is not to be used for an extended period of time.
- Do not damage, alter, excessively bend, twist, pull, pinch or heat the power cord.
- Before using the appliance, remove any wire or string on the floor.
- Avoid touching the prongs of the power plug with your finger(s) when unplugging the power cord.
- Do not cover the power cord with a rug or carpeting.
- Push the power plug firmly into the wall outlet so that it is not loose.
- If the product has been submerged, contact an LG Electronics service center or dealer for instructions before resuming use.

## 6 IMPORTANT SAFETY INSTRUCTIONS

---

- If the product makes a strange noise or emits an odor or smoke, discontinue use and contact an LG Electronics customer information center.
- Only qualified technicians or service personnel from LG Electronics may disassemble, repair or modify the appliance.
- Never insert a sharp metallic object such as a pin, nail or knife in a hole or gap in the appliance or the charging station.
- Do not vacuum liquids with this appliance. Make sure that no water, beverage or detergent gets inside the appliance or the charging station.
- Do not allow the appliance to sweep up blades, thumb tacks, sawdust, sharp objects, or hot or cold ashes.
- Do not allow children to use the appliance.
- Do not let children or pets get close to the appliance when using, charging or storing.
- Do not insert the nozzle or tools in your mouth.
- Keep clothing and hair, fingers, or other parts of the body away from openings and moving parts.
- Do not operate the appliance with the suction inlet or outlet blocked.
- Do not use in an enclosed space where vapors are present from paint thinner, mothproofing substances, flammable dust or other explosive or toxic materials.
- Make sure that the filter is installed before use.
- Do not use with the dust bin opened.
- Do not touch the charging terminals on the appliance or the charging station, or insert an electrified object inside the appliance or the station.
- Always store the appliance on the self-standing or wall-mounted charging station when it is not in use.
- Do not lean the appliance on walls, chairs or tables.
- If the earth leakage breaker is tripped when the product is put on the charging station, immediately remove the appliance from the charging station. Contact an LG Electronics customer service center.
- Use extra care when cleaning on stairs.
- Do not use or store a heating device or flammable substance (ether, benzene, alcohol, chemicals, combustible sprays, insecticide, air freshener or cosmetics) in close proximity to the appliance.
- Do not attempt to clean up a liquid substance (water, beverage), odorous substances (candy, chocolate, pet excrement), metallic objects (blades, pins), flammable substances, surfactants, or glass shards with this appliance.
- In the event of a gas leak (natural gas, propane gas, etc.) do not operate this or any other appliance. Open a window or door to ventilate the area immediately.
- Do not hold the charging station upside down with the battery in the charging station.
- Do not expose the appliance, and the battery in particular, to heat, a heating device or direct sunlight.
- Do not keep the appliance or its battery inside a vehicle which is exposed to direct sunlight.
- Never allow any water, beverage or detergent to get inside the battery.
- Do not apply physical impacts to the battery.
- Do not put any object into openings. Do not use with any opening blocked; keep free of dust, lint, hair, and anything that may reduce airflow.
- Do not use to pick up flammable or combustible liquids, such as gasoline, or use in areas where they may be present.
- Do not pick up anything that is burning or smoking, such as cigarettes, matches, or hot ashes.
- Do not use the appliance without the dust bin and filters in place.

### **Maintenance**

- Make sure to unplug the power cord when cleaning or maintaining the charging station.

- Do not wash the inlet port or the dust bin with water or detergent.
- Do not use detergents, polishes or air fresheners to clean the dust bin.
- Do not spray or use water, inflammable materials such as gasoline or thinners, or surfactants such as detergent or bath soap near the appliance.
- Wash hands after handling nozzles. The nozzles contain carbon fiber, and contact may cause minor skin irritation.

## Disposal

- Keep packing materials out of the reach of children. Packaging materials can pose a suffocation risk for children.
- Destroy the carton, plastic bag, and other packing materials after the appliance is unpacked. Children might use them for play. Cartons covered with rugs, bedspreads, or plastic sheets can become airtight chambers.
- Dispose of this appliance according to local, state, and regional laws and regulations.
- Contact your local city council or the related government authority before disposing of this appliance.
- In case rechargeable battery is included in this product, the entire device should be recycled in compliance with rechargeable battery recycling standards because of the internal battery. To dispose of properly, call (800) 822-8837 or visit [www.call2recycle.org](http://www.call2recycle.org).

## CAUTION STATEMENTS

---

### CAUTION

- To reduce the risk of injury to persons, malfunction, or damage to the product or property when using the appliance, follow basic safety precautions, including the following:
- 

### Operation

- This appliance has a built-in safety device to prevent damage from overheating. If the appliance becomes overheated after extended use, it may automatically turn off. If this occurs, leave the appliance in a cool, well-ventilated area for about an hour before turning on the power again.
- Do not subject the product to shocks or drop it.
- Secure the appliance in the charging station when not in use, to avoid it falling over.
- Do not install wet or damp filters.
- Make sure to wipe up any liquid such as water or oil or pet excrement from the floor before using the appliance.
- Do not clean the product with a volatile or organic solvent (thinner or acetone).
- Always use a soft cloth to clean the appliance.
- Remain aware of your surroundings while using the appliance to avoid colliding with people or animals.
- Do not kick or apply force to the appliance.
- Do not put any object other than the appliance, especially a metallic or magnetic object, on the charging station.
- Do not clean the same spot repeatedly for an extended period of time.
- Vibration from the inlet port or rotating brush may damage the floor or the carpet.
- Keep fingers away from pinch points when assembling the appliance or the charging station.
- Do not let a child or a pet hang onto the charging station.
- Follow all applicable state and local codes and regulations when installing the mounting station.
- Do not use the double-sided tape to anchor the charging station on wallpaper. Use the provided screws to anchor the charging station. The weight of the charging station and the appliance could damage the paper.
- Do not apply force or any impact to the cyclonic mesh filter.
- Do not remove the battery during operation.

**SAVE THESE INSTRUCTIONS**



# INSTALLATION

## Product Overview

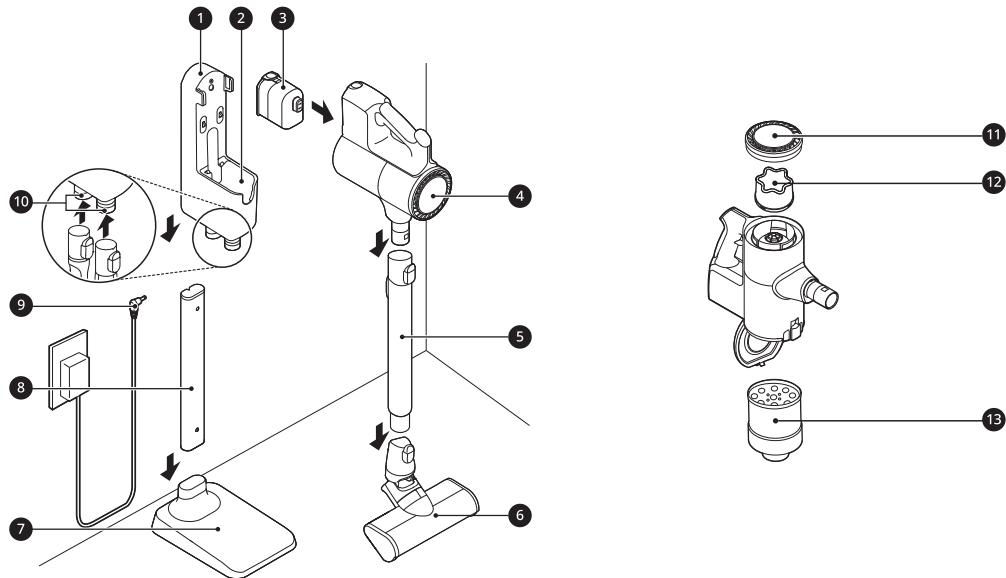
The images in this guide may be different from the actual components and accessories, which are subject to change by the manufacturer without prior notice for product improvement purposes.

### NOTE

- For your safety and for extended product life, use only authorized components. The manufacturer is not responsible for product malfunction, property damage or bodily injury caused by the use of separately purchased unauthorized components, parts, or non-LG products.
- The floor stand dock and floor stand pipe are not installed in wall-mount installation.

### Front View

† This feature is only available on some models.



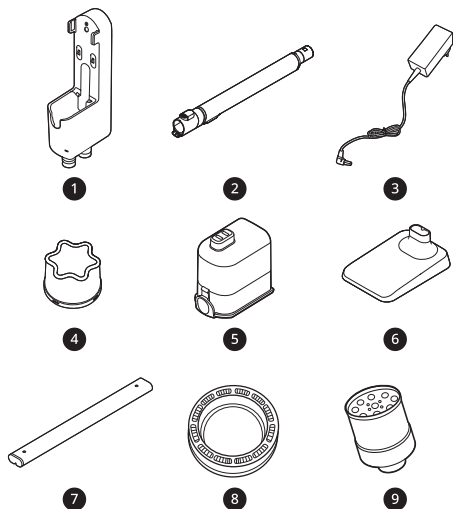
- ① Charging Station
- ② Auxiliary Charging Station
- ③ Battery (Dual Battery<sup>†</sup>)
- ④ Product Body
- ⑤ Extension Pipe
- ⑥ Nozzle
- ⑦ Floor Stand Dock<sup>†</sup>
- ⑧ Floor Stand Pipe<sup>†</sup>
- ⑨ Adapter
- ⑩ Tool Holders
- ⑪ Exhaust Filter
- ⑫ Pre-filter
- ⑬ Cyclonic Mesh Filter

## 10 INSTALLATION

### Accessories

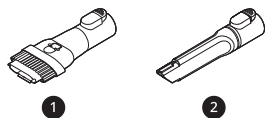
† This accessory is only available on some models.

#### Included Accessories



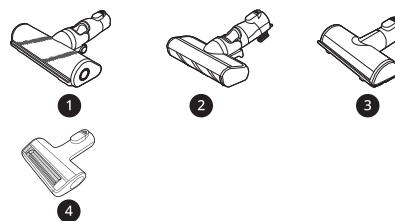
- 1 Charging Station
- 2 Extension Pipe
- 3 Adapter
- 4 Pre-filter
- 5 Battery (Dual Battery<sup>†</sup>)
- 6 Floor Stand Dock<sup>†</sup>
- 7 Floor Stand Pipe<sup>†</sup>
- 8 Exhaust Filter<sup>†</sup>
- 9 Cyclonic Mesh Filter<sup>†</sup>

#### Basic Accessories



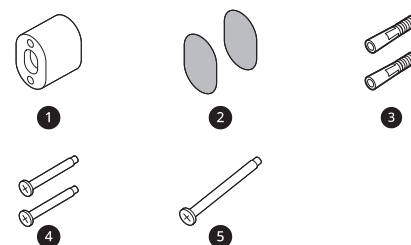
- 1 Combination Tool
- 2 Crevice Tool

### Nozzles



- 1 Universal Nozzle<sup>†</sup>
- 2 Hard Floor Nozzle<sup>†</sup>
- 3 Bedding Nozzle<sup>†</sup>
- 4 Pet Nozzle<sup>†</sup>

#### Installation Kit



- 1 Wall Anchoring Block<sup>†</sup>
- 2 Double-Sided Tape<sup>†</sup>
- 3 Drywall Anchor<sup>†</sup>
- 4 Wall Anchoring Screw<sup>†</sup>
- 5 Stand Anchoring Screw<sup>†</sup>

#### NOTE

- The batteries, exhaust filter and the pre-filter will eventually need to be replaced. Contact an LG Electronics customer service center.

### Specifications

- **Model:** A91\*\*\*\*\*
- **Dimensions (W x D x H):** 10.2 in x 10.6 in x 44.1 in (260 mm x 270 mm x 1120 mm)
- **Weight:** Approximately 5.7 lb (2.7 kg)
- **Power Consumption**
  - 370 W in Turbo Mode (Maximum 480 W)
  - 250 W in Power Mode
  - 80 W in Normal Mode

- **Battery Run Time**

- Up to 6 minutes in Turbo Mode
- Up to 11 minutes in Power Mode
- Up to 40 minutes in Normal Mode (with the Nozzle<sup>†</sup>)
- Up to 50 minutes in Normal Mode (using with the Tool)

- **Charger Adapter**

- **Model:** ADC-30FSA-30 29430EPCU
- **Input:** 100 V - 240 V~ 50/60 Hz, 0.8 A
- **Output:** DC 29.4 V 1.0 A
- Dimensions are given for the assembled product body, extension pipe and nozzle.
- Battery run time is the result of using a fully charged battery according to the LG Electronics test standard. Results may be different depending on actual use environment and period of use.

† The Nozzle contains the direct drive motor that rotates the nozzle cleaning head directly.

## Installing the Charging Station

### ⚠ WARNING

- To prevent tipping, self-standing mode installations should be anchored to the wall using the provided stand anchoring screw, anchoring block and double-sided tape.

### ⚠ CAUTION

- Do not allow children or pets to hang onto the charging station. They could be injured or cause damage to the appliance.
- Take care not to drop the product parts while unpacking them to avoid appliance damage or personal injury.
- Do not use double-sided tape to attach the charging station to wallpaper. The weight of the charging station and the product body could damage the paper.
- Use the stand anchoring screw on concrete or solid walls. If the appliance is not anchored securely and falls, it could result in damage to property or the product.

### NOTE

- Once assembled, the floor stand dock and the floor stand pipe cannot be disassembled.
- The cost of a service call to install or reinstall the charging station is not covered under the warranty.

### Wall-Mounted Installation

For wall-mounted installations, the charging station must be attached securely to the wall using the provided (short) wall anchoring screws.

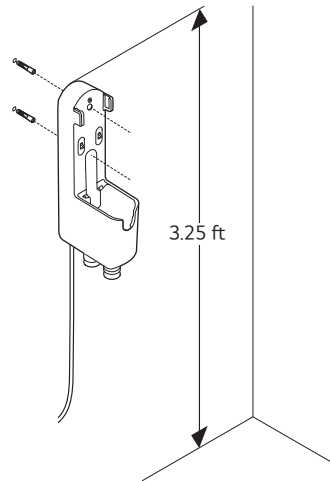
- The detachable nozzle storage cannot be attached to the charging station in a wall-mounted installation.

**1** Connect the power adapter to the port on the back of the charging station.

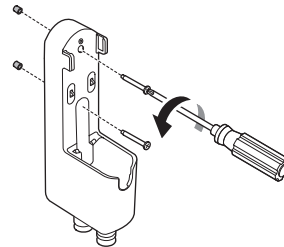
**2** Drill 2 holes and insert the drywall anchors (if needed) at least 3.25 ft (1 m) from the floor and near enough to easily reach a power outlet.

- Before drilling, make sure that there are no pipes or electrical wires inside the wall at the desired location.

- For drywall anchor: use 1/4" (6.5 mm) drill bit
- For concrete or wall stud: use 1/8" (3 mm) drill bit
- If screwing into drywall, use the drywall anchors.



**3** Attach the charging station to the wall with the wall anchoring screws.



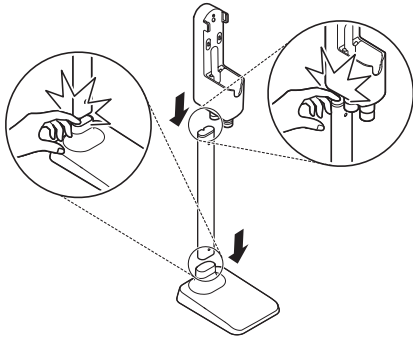
**4** Plug the power cord into the power outlet.

### Self-Standing Installation

Follow the steps below to install the charging station on a hard and level floor.

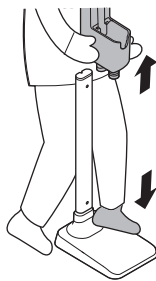
**CAUTION**

- Keep fingers away from pinch points when assembling the appliance or the charging station.

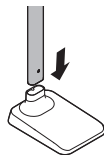


**NOTE**

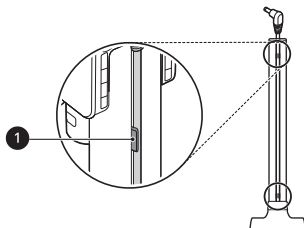
- The charging station can be removed as needed. To remove it, hold the floor stand dock steady and pull up on the charging station.



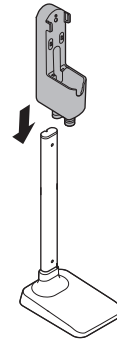
- 1** Place the floor stand dock on a hard and level floor and assemble the floor stand pipe.



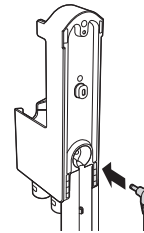
- 2** Clip the power cord tidily into the cord keeper **1** on the back of the floor stand pipe.



- 3** Assemble the charging station onto the top of the floor stand pipe.

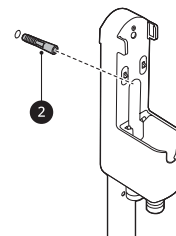


- 4** Connect the power adapter to the port on the back of the charging station.



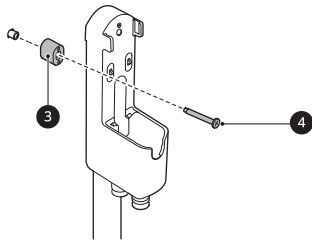
- 5** Drill a hole in the wall and insert the drywall anchor **2** if needed.

- Before drilling, make sure that there are no pipes or electrical wires inside the wall at the desired location.
- For drywall anchor: use 1/4" (6.5 mm) drill bit
- For concrete or wall stud: use 1/8" (3 mm) drill bit
- If screwing into drywall, use the drywall anchor.



- 6** Align the wall anchoring block **3** of the charging station, and fix the charging station to the wall by tightening the anchoring screw **4** all the way.

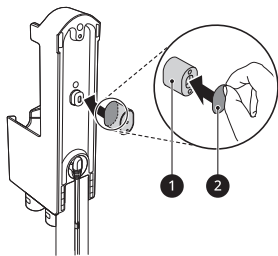
## 14 INSTALLATION



- 7 Plug the power cord into the power outlet.

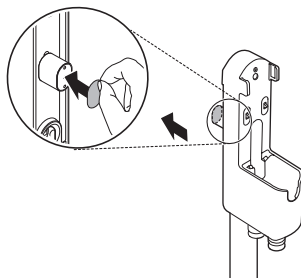
### Using Double-Sided Tape to Secure the Appliance

- 1 Use the double-sided tape (1) to attach the wall anchoring block (2) to the charging station.
- Remove the center section of double-sided tape before attaching it to the wall anchoring block.



- 2 Attach the second piece of double-sided tape to the other side of the wall anchoring block to secure it to the wall.

- Do not use double-sided tape on wallpaper.



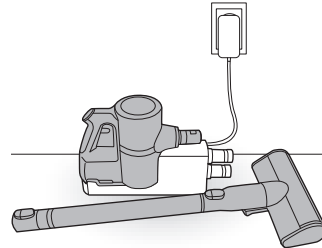
### Compact Installation

For safety and convenience, install the charging station using the self-standing or wall-mounted installation methods. If you choose not to install the charging station, place it on a level floor for charging or storage.

- 1 Connect the power adapter to the port on the back of the charging station.

- 2 Place the charging station on a hard and level floor.

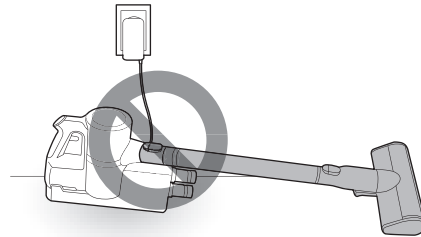
- 3 Separate the extension pipe and nozzle from the product body before charging or storing the appliance.



- 4 Plug the power cord into the power outlet.

### CAUTION

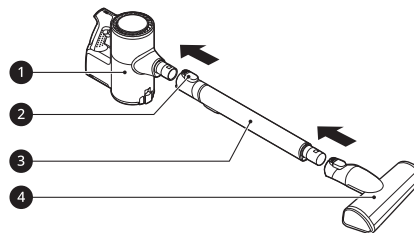
- Leaving the appliance on a level floor for a long time with the extension pipe and nozzle attached may damage the appliance.



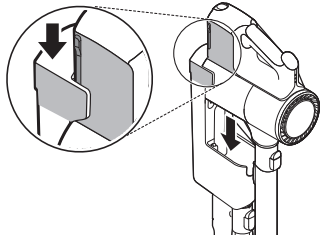
### Assembling the Appliance

Follow these steps to safely assemble the appliance.

- 1 Firmly attach the extension pipe (3), nozzle (4), or tool onto the product body (1).
- To detach the extension pipe, press the extension pipe release button (2).



- 2 Put the product body on the charging station.
- See **Charging the Battery** for instructions on installing and charging the battery.

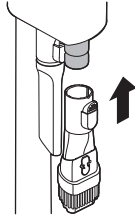


## Storing the Accessories

### Storing the Tools

Store the frequently used tools such as the combination tool and crevice tool at the bottom of the charging station.

- To remove a tool, press the release button at the front of the tool.



# OPERATION

## Getting Started

### Before Using the Appliance

- Make sure that the exhaust filter and pre-filter are properly assembled before using the appliance.
- Close the dust bin cover properly before using the appliance. If the dust bin cover is left open, the suction strength may deteriorate and affect the cleaning performance.
- This appliance has a built-in safety device to prevent overheating. If the appliance becomes overheated after extended use, it may automatically turn off. If this occurs, leave the appliance in a cool, well-ventilated area for about an hour before turning on the power again.
- Make sure to remove any foreign object such as a sock or stocking before using the appliance. Any foreign object on the inlet port or extension pipe will prevent the appliance from functioning properly.
- Environmental conditions such as temperature and humidity may cause static electricity to accumulate on the appliance. Please contact LG Electronics customer information center if the problem persists.
- Please use the product at normal room temperatures as the battery runtime may deteriorate severely if used at temperatures lower than 41 °F (5°C) or higher than 100 °F (38°C) for an extended period of time.
- Do not use the appliance to suck up oils or any liquids, including water.
- Support the bottom of the appliance when cleaning an elevated surface.
- Store the appliance in the charging station or place it flat on the floor when not in use. Leaning the appliance against a wall or chair can result in product damage or personal injury if the appliance falls.
- To avoid scratches on polished floors, keep the brushes of the nozzles and tools free from grit, sand, or abrasive objects.
- Refer to the **Specifications** section for battery runtime details.
- The battery runtime is dependent on the surface type and the suction power.
- Follow manufacturer's recommendations when cleaning flooring, carpets, and rugs.

- Do not use tools to clean a TV, monitor or LCD display as they may scratch these surfaces.

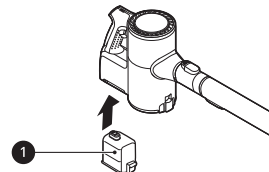
### Assembling Attachments

Nozzles and tools can be attached to either the product body or the end of the extension pipe.

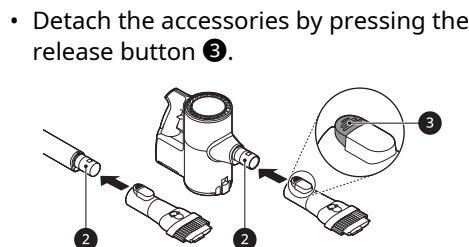
#### ⚠ CAUTION

- Running the appliance for a long period of time with a tool connected may cause the motor to overheat.
- This appliance has a built-in safety device to prevent overheating. If the appliance becomes overheated after extended use, it may automatically turn off. If this occurs, leave the appliance in a cool, well-ventilated area for about an hour before turning on the power again.
- Do not use the Kompressor lever while the appliance is running. Doing so may cause product damage.

- 1 Insert the fully charged battery ① into the cavity at the bottom of the handle on the product body.



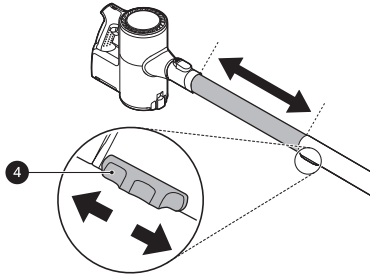
- 2 Attach the nozzles, tools, or extension pipe by sliding them onto the inlet ② on the body until they click into place. The nozzles and tools can also be attached to the end of the extension pipe ②.





- 3** Adjust the extension pipe by pressing the length adjustment button **4** on the back of the pipe and sliding until it clicks into place at the desired length.

- The extension pipe extends in four steps.

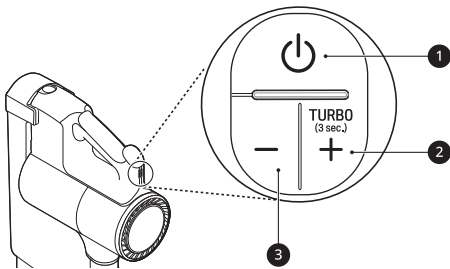


- 4** Press the **Power** button to activate the **Normal** mode.

- To turn off the appliance, press the **Power** button again.

## Adjusting the Suction Power

Adjust the suction power using the suction power adjustment button on the handle.



### 1 Power Button

- Press the **Power** button to turn the appliance on or off.
- Press the **Power** button to activate **Normal** mode.

### 2 Suction Power Up (+) Button / Turbo Mode

- Press the + button to increase the suction power. (**Normal**→**Power**→**Turbo**)
- Press and hold the + button for more than 3 seconds to activate **Turbo** mode from **Power** mode.

### 3 Suction Power Down (-) Button

- Press the - button to decrease the suction power. (**Turbo**→**Power**→**Normal**)

## Charging the Battery

### Before Charging the Battery

- Make sure that the adapter is connected to both the charging station and the power outlet.
- Fully charging a single battery usually takes about 4 hours. It will take twice as long to charge both the main and auxiliary batteries.
- The battery will not be charged if the indoor temperature is below 41 °F (5°C). Only charge the battery when indoor temperatures are between 41 °F (5°C) and 100 °F (38 °C).
- The battery will eventually need to be replaced. Due to the battery characteristics, runtime is shortened after using the appliance repeatedly for an extended period.
- The last bar on the battery indicator begins to blink when the battery needs to be recharged. Use the appliance with a fully charged battery.
- If the main battery is charging on the charging station, the auxiliary battery will only start charging once the main battery is fully charged.
- To maintain battery life on dual-battery models, swap the positions of the two batteries periodically, between the main body and the auxiliary charging station.

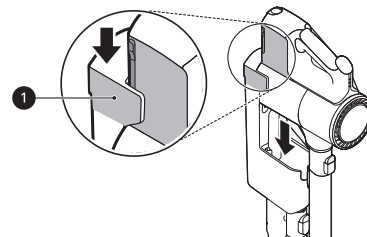
### Charging the Product Body

Storing the appliance on the charging station automatically recharges the battery.

- 1** Press the **Power** button to turn the appliance off.

- 2** Put the product body onto the charging station by aligning it to the hook **1** of the charging station.

- The battery level indicator starts to blink and begins charging the battery.
- When charging is complete, the battery level indicator lights up briefly and then turns off to save energy.



**⚠ WARNING**

- Make sure to securely fit the product body onto the charging station. If the appliance falls off the charging station, it could cause injuries, property damage or product damage.

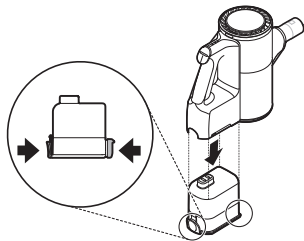
**Charging the Auxiliary Battery**

An auxiliary battery can be stored and charged in the base of the charging station.

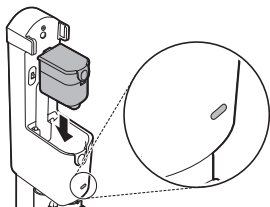
**⚠ CAUTION**

- Keep fingers away from pinch points when assembling or disassembling the battery from the product body or the charging station to avoid personal injury.

- 1 Remove the discharged battery from the product body by pressing the battery release button on either side of the battery and pulling.



- 2 Insert the discharged battery into the auxiliary charging station.
  - The battery will only fit into the cavity if aligned properly.
  - The auxiliary charging indicator blinks while recharging is in progress.
  - When charging is complete, the auxiliary charging indicator lights up briefly and then turns off to save energy.



**Using the Nozzles and Tools**

**Before Using the Nozzles and Tools**

Some accessories are only available on some models.

Specialized attachments can help you clean more effectively. Tools and nozzles can be attached to the product body or the extension pipe.

- Adjust the suction power if the inlet gets stuck on the floor, carpet, or bedding.
- Each nozzle is equipped with a motor and may make a sound when operating.

**⚠ CAUTION**

- Do not use the Hard Floor Nozzle or Universal Nozzle on PVC or polyurethane mats for infants and children. The mat may stick to the nozzle, making it difficult to operate, causing damage to the mat or static electricity on the appliance. Clean mats using the crevice tool.

**Universal Nozzle**

Use this nozzle to clean carpets or rugs.

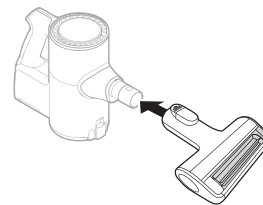
- If used on hard flooring, this nozzle will be noisy.

**Hard Floor Nozzle**

Use this nozzle to clean hard floor surfaces.

**Pet Nozzle**

Use this nozzle for soft surfaces and pet hair removal.



**⚠ CAUTION**

- Do not use the nozzle on the surfaces listed below. Do not use it to clean coated or lacquered floors especially, as repeated use can wear down the coating.
  - Clothing, bedding
  - Leather sofas, cushions
  - Carpet

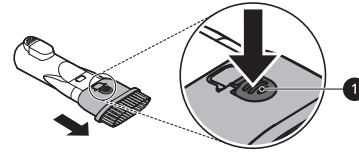
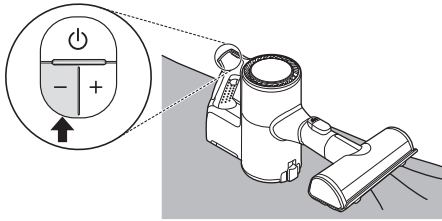
- Vinyl flooring, tiles, marble

- To convert modes, press the adjustment button ① and push forward.

## Bedding Nozzle

This nozzle lets you clean sheets and bedding more effectively. It removes dust in bedding using strong suction and a punching motion.

- Lower the suction level when vacuuming bedding such as duvet covers to avoid the thin fabric getting sucked into the nozzle.

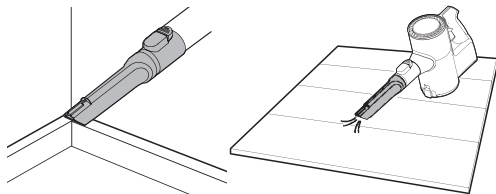


ENGLISH

## Crevice Tool

Use this tool to remove dust from corners or narrow spaces.

- Use it for areas with static electricity such as mats.
- Use it with the **Turbo** mode to clean pet hair out of furniture, mats, or tight areas like corners.

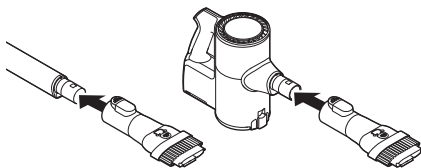


## Combination Tool

Can be used in either crevice mode or brush mode for cleaning corners or small gaps where dust and dirt gather.

### • Crevice Mode

Use the tool in the crevice mode to clean flat surfaces such as sofas or mattresses.



### • Brush Mode

Use the tool in the brush mode to clean delicate surfaces such as frames or furniture.

# MAINTENANCE

## Cleaning the Appliance

### Before Cleaning the Appliance

To maintain the optimum suction power, the cyclonic mesh filter, the exhaust filter and the pre-filter should be cleaned regularly and washed under running water at least once a month.

- Turn off the power before cleaning the appliance.
- The frequency of cleaning varies depending on the usage environment and usage time. In a dusty environment, clean frequently.

### ⚠ WARNING

- Never wash the nozzle, rotating brush or product body with water. Water could reach the motor and cause electric shock or fire.
- Do not allow foreign objects to enter the motor. Doing so may cause electric shock, fire or product damage.
- Do not insert fingers or sharp objects into the motor. Doing so could cause product damage, personal injury or electric shock.

### ⚠ CAUTION

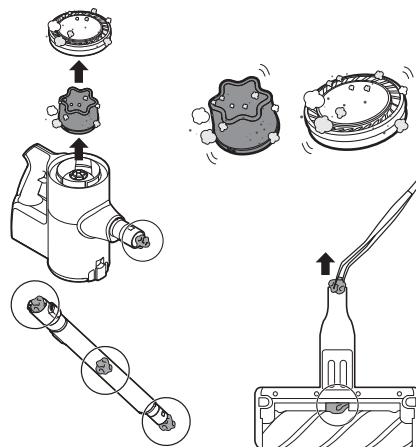
- Do not apply force or allow impacts to the cyclonic mesh filter. Doing so could deform the filter, compromise product performance, or cause the product to malfunction.

### Removing Foreign Objects

In order to maintain product performance, be sure to remove any foreign objects and dust from inside the product body, extension pipe or air inlets.

- Foreign materials inside the product can cause the product to be noisy, have poor suction, or shut down during operation.
- If the inside of the product body, extension pipe, inlets, pre-filter, or fine dust filter is clogged with foreign objects, the power will surge (alternating from Hi to Lo power) a few times to alert you to the blocked airflow. The appliance will then automatically turn off to prevent damage. Separate the battery from the product body and

remove the foreign objects before resuming use of the appliance.

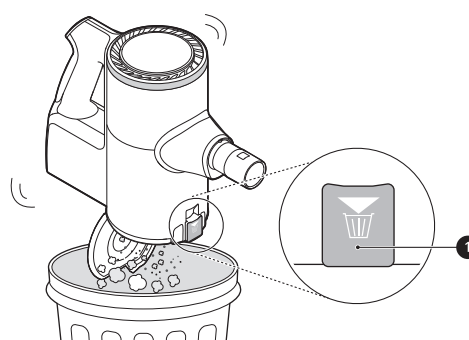


### Cleaning the Dust Bin

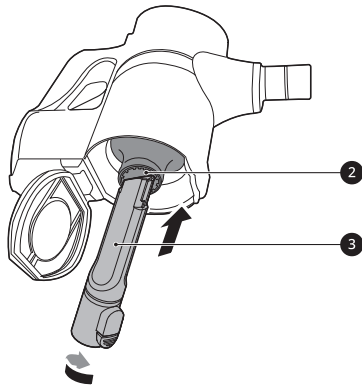
Empty and clean the dust bin after every use.

- If the dust bin is completely full of dust or the filter is clogged, the suction power may be reduced.

- 1 Remove the battery from the product body before cleaning the dust bin.
- 2 Press the dust bin cover release button ① to open the dust bin cover. Shake the dust bin to empty it.
  - Be careful as dust or foreign objects may spill out when opening the dustbin. Empty the dust bin into a wastebasket or where dust and foreign objects can be easily removed.

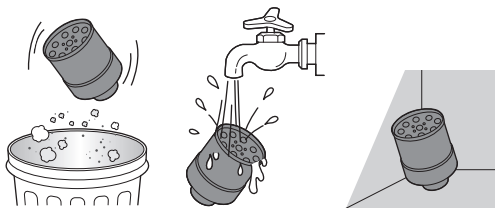


- 3** Insert the crevice tool **3** into the Cyclonic Mesh Filter **2** and turn it counterclockwise to remove the filter.

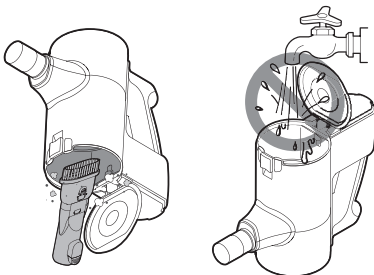


- 4** Wash the Cyclonic Mesh Filter under running water.

- To avoid odor and the malfunction of the motor, allow the Cyclonic Mesh Filter to dry completely in a well-ventilated area out of direct sunlight for at least 24 hours before reassembling.



- 5** Use the combination tool to clean out dust or foreign objects inside the dust bin.



- Do not use the appliance without the Cyclonic Mesh Filter installed. Doing so could damage the product.
- Do not insert fingers or sharp objects into the motor to avoid product damage, personal injury, or electric shock.
- Do not allow foreign objects to reach the motor to avoid product damage, explosion or fire.

**⚠ CAUTION**

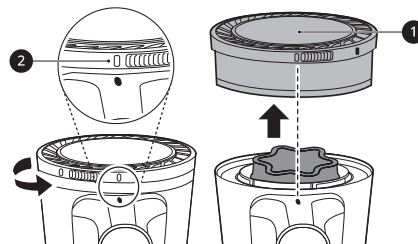
- Do not apply force or allow impacts to the Cyclonic Mesh Filter. Doing so could deform the filter, compromise product performance, or cause the product to malfunction.

**Cleaning the Filters**

Clean the pre-filter and exhaust filter regularly and wash them in running water at least once a month to maintain the optimum suction power of the appliance.

- The frequency of cleaning depends on where and how often you use the product. Clean the filters more frequently if the appliance is used regularly or in areas with a lot of dust.
- Filters are consumables. Please purchase more filters from an authorized service center.

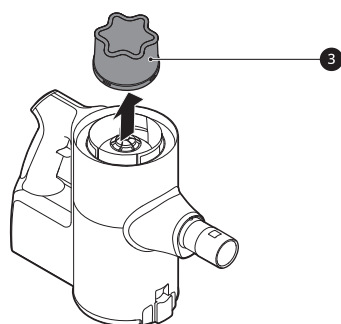
- Remove the battery from the product body.
- Rotate the exhaust filter **1** to the unlocked position **2** to separate it from the product body.



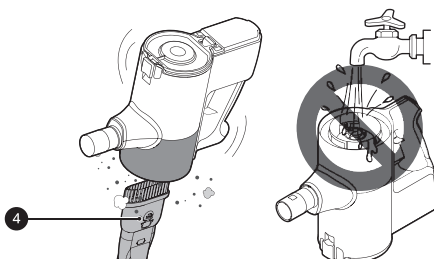
- Lift out the pre-filter **3** from the product body.

**⚠ WARNING**

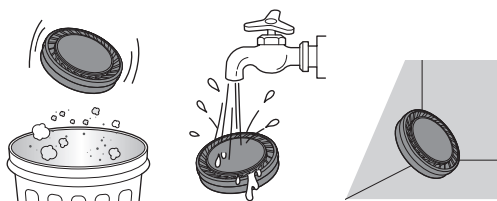
- Never wash the product body with water. Water could reach the motor and cause electric shock or fire.
- Do not use the product body to suck up oils or any liquids, including water.



- 4** Use the combination tool **4** to clean any dust off the motor.
- Do not wash the motor with water.

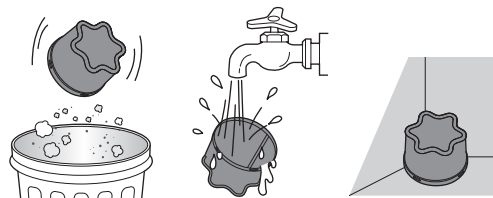


- 5** Clean the exhaust filter by brushing the dust off it regularly and wash it in running water at least once a month.
- To avoid odor and the malfunction of the motor, allow the exhaust filter to dry completely in a well-ventilated area out of direct sunlight for at least 24 hours before reassembling.

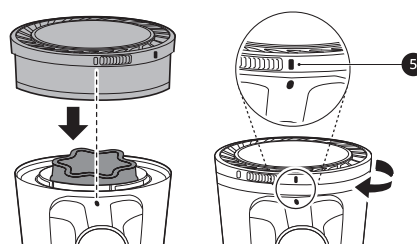


- 6** Clean the pre-filter by brushing the dust off it regularly and wash it in running water at least once a month.
- To avoid odor and the malfunction of the motor, allow the pre-filter to dry completely in a well-ventilated area out of direct

sunlight for at least 24 hours before reassembling.



- 7** Insert the clean, dry pre-filter and rotate the exhaust filter to the locked position **5** to reassemble it on the product body.



**! CAUTION**

- Do not use the appliance without the exhaust filter and pre-filter installed. Doing so could result in product damage.

## Cleaning the Nozzle

Clean the nozzle and rotating brush regularly.

**! CAUTION**

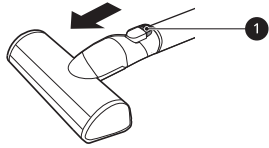
- Always separate the nozzle from the product body or remove the battery before cleaning. If the nozzle starts to operate during cleaning, it could cause an injury.
- Keep fingers away from pinch points when assembling the nozzle on the appliance or the rotating brush on the nozzle.
- Do not use the rotating brush as a wet mop. Doing so may cause product damage.

## Cleaning the Universal/Hard Floor Nozzle

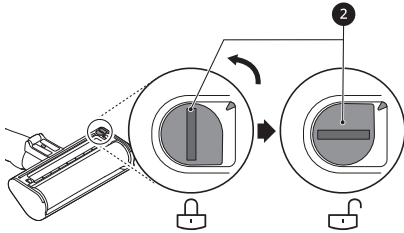
Clean the brush and roller heads before each use.

- If the brush contains foreign objects, the brush may not spin or a noise may occur during operation.

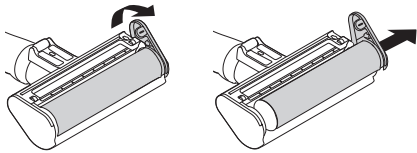
- 1 Press the nozzle release button ❶ to remove the nozzle from the extension pipe or product body.



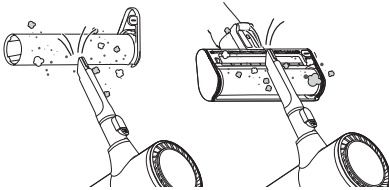
- 2 Turn the nozzle upside down and rotate the cover lock slot ❷ counterclockwise.



- 3 Pull the brush cover forward and pull the brush out.

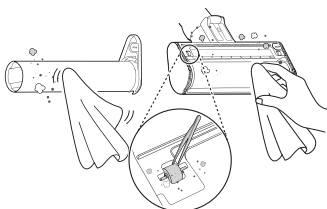


- 4 Attach the crevice tool to the product body and use the vacuum to remove foreign objects and dust from the brush and the bottom of the nozzle.



- 5 Use a damp towel or cloth to remove any remaining foreign objects and dust from the brush and the bottom of the nozzle.

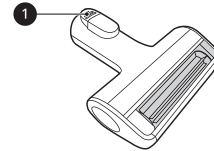
- Carefully use a tweezers to remove foreign objects from the nozzle rollers.
- Do not rinse or submerge the rotating brush or nozzle in water.



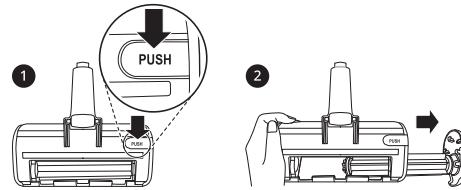
- 6 Slide the brush back into the nozzle and rotate the cover back into place. Turn the cover lock clockwise to lock the cover.

## Cleaning the Pet Nozzle

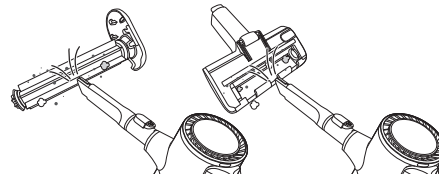
- 1 Press the nozzle release button ❶ to remove the nozzle from the extension pipe or product body.



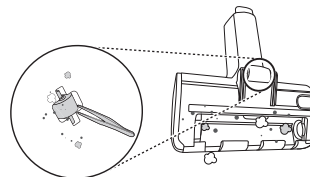
- 2 Hold down the **PUSH** button on the nozzle while removing the rotating brush.



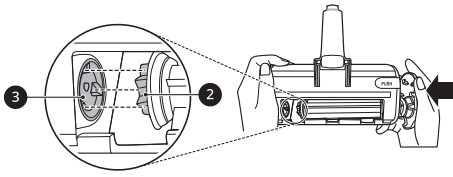
- 3 Attach the crevice tool to the product body and use the vacuum to remove foreign objects and dust from the brush and the bottom of the nozzle.



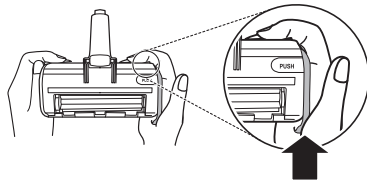
- 4 Use a damp towel or cloth to remove any remaining foreign objects and dust from the brush and the bottom of the nozzle. Remove foreign objects, debris and hair from all nozzle rollers using tweezers.



- 5 Insert the left side of the brush ❷ into the groove ❸ inside the nozzle.

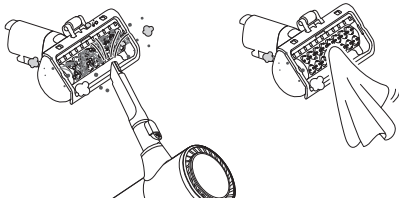


- 6** Press the brush cover until it clicks to lock the brush in place.



### Cleaning the Bedding Nozzle

- 1** Press the nozzle release button to remove the nozzle from the extension pipe or product body and turn the nozzle upside down.
- 2** Attach the crevice tool to the product body and use the vacuum to remove foreign objects and dust from the bottom of the nozzle.
  - Use a damp towel or cloth to remove any remaining foreign objects and dust from the bottom of the nozzle. After cleaning, wipe the nozzle dry.
  - Do not rinse or submerge the nozzle in water.





# TROUBLESHOOTING

## Before Calling for Service

### Operation

| Problem  | Possible Cause & Solution  |
|--|--|
| The appliance does not operate.                  | <b>Battery is fully discharged.</b> <ul style="list-style-type: none"> <li>Charge the battery.</li> </ul>  |
|  | <b>Appliance is turned off.</b> <ul style="list-style-type: none"> <li>Press the <b>Power</b> button to turn on the appliance.</li> </ul>  |
| Suction power is too weak.                       | <b>Dust bin is full of dust.</b> <ul style="list-style-type: none"> <li>Empty the dust bin.</li> </ul>   |
|  | <b>Filters are clogged.</b> <ul style="list-style-type: none"> <li>Clean the pre-filter and the exhaust filter.</li> </ul>   |
|  | <b>Inlet is clogged.</b> <ul style="list-style-type: none"> <li>Remove any foreign objects from inside the product body or the extension pipe.</li> </ul>  |
|  | <b>Foreign object is on rotating brush, or in inlet port.</b> <ul style="list-style-type: none"> <li>Remove any foreign objects (thread, hair) from the rotating brush or the inlet port.</li> </ul>   |
| The product body does not appear to be charging. | <b>Power adapter is not connected to the charging station.</b> <ul style="list-style-type: none"> <li>Plug the adapter firmly into the charging station.</li> </ul>  |
|  | <b>Power cord is unplugged.</b> <ul style="list-style-type: none"> <li>Plug the power cord securely into the charging station.</li> </ul>  |
|  | <b>Foreign object is on the charging terminals.</b> <ul style="list-style-type: none"> <li>Remove dirt or foreign objects from the charging terminals with a dry cloth.</li> </ul>   |
| Hot air is coming from the product body.         | <b>Motor is cooling.</b> <ul style="list-style-type: none"> <li>If the appliance is running normally, the hot air is a result of the motor cooling and is not a sign of malfunction.</li> </ul>  |
| A strange odor is coming from the appliance.     | <b>Appliance was purchased within the last 3 months.</b> <ul style="list-style-type: none"> <li>The cleaner may emit a smell of rubber for about 3 months after purchase.</li> </ul>   |
|  | <b>Dust bin is full of dust.</b> <ul style="list-style-type: none"> <li>The dust in the bin may cause some odor. Empty the bin and clean it.</li> </ul>  |
|  | <b>Foreign object is on the filter.</b> <ul style="list-style-type: none"> <li>The filter may emit an odor if it has not been cleaned for some time. Clean the pre-filter and exhaust filter regularly.</li> </ul>   |
|  | <b>Pre-filter was installed while damp or wet.</b> <ul style="list-style-type: none"> <li>Wash the pre-filter with running water. To avoid odor, allow the pre-filter to dry completely in a well-ventilated area out of direct sunlight for at least 24 hours before reassembling.</li> </ul>             |
|  | <b>Exhaust filter was installed while damp or wet.</b> <ul style="list-style-type: none"> <li>Wash the exhaust filter with running water. To avoid odor, allow the exhaust filter to dry completely in a well-ventilated area out of direct sunlight for at least 24 hours before reassembling.</li> </ul> |
| The appliance makes too much noise.              | <b>Vacuum cleaner is running in Turbo mode.</b> <ul style="list-style-type: none"> <li>The motor may be louder at the higher suction power settings. This is normal.</li> </ul>  |

## 26 TROUBLESHOOTING

---

| Problem   | Possible Cause & Solution   |
|---|---|
| <b>The appliance turns off unexpectedly or by itself after the motor speed fluctuates repeatedly.</b> | <b>Battery is not fully charged.</b> <ul style="list-style-type: none"><li>• The battery must be fully charged before cleaning. If the problem persists when the battery is fully charged and the pipes and attachments are clear from obstructions, contact an LG customer information center for service.</li></ul> |
|   | <b>Foreign object is in the product body, extension pipe, inlet port or nozzle.</b> <ul style="list-style-type: none"><li>• Remove any foreign objects from the product body, extension pipe, inlet port or nozzle.</li></ul>   |
|   | <b>Filters are clogged.</b> <ul style="list-style-type: none"><li>• Clean the pre-filter and the exhaust filter.</li></ul>  |
| <b>The rotating brush does not rotate.</b>  | <b>Brush is improperly installed.</b> <ul style="list-style-type: none"><li>• Remove the brush, clean it if necessary and attach it again.</li></ul>  |
|   | <b>Foreign object is on rotating brush.</b> <ul style="list-style-type: none"><li>• Remove any foreign objects from the rotating brush.</li></ul>   |

# LIMITED WARRANTY

## USA

### TERMS AND CONDITIONS

**ARBITRATION NOTICE: THIS LIMITED WARRANTY CONTAINS AN ARBITRATION PROVISION THAT REQUIRES YOU AND LG ELECTRONICS (“LG”) TO RESOLVE DISPUTES BY BINDING ARBITRATION INSTEAD OF IN COURT, UNLESS YOU CHOOSE TO OPT OUT. IN ARBITRATION, CLASS ACTIONS AND JURY TRIALS ARE NOT PERMITTED. PLEASE SEE THE SECTION TITLED “PROCEDURE FOR RESOLVING DISPUTES” BELOW.**

Should your LG Vacuum Cleaner (“Product”) fail due to a defect in materials or workmanship under normal and proper use, during the warranty period set forth below, LG will, at its option, repair or replace the Product. This limited warranty is valid only to the original retail purchaser of the Product (“You”) and applies only when purchased lawfully and used within the United States including U.S. Territories.

| WARRANTY PERIOD  |  |
|--|--|
| Vacuum Cleaner   | Smart Inverter Motor (Suction Motor)                     |
| One (1) year from the date of original retail purchase | Ten (10) years from the date of original retail purchase |
| Parts and Labor (internal/functional parts only)       | Parts only (You will be charged for labor)               |

- Replacement Products and parts are warranted for the remaining portion of the original warranty period or ninety (90) days, whichever is greater.
- Replacement Products and parts may be new, reconditioned, refurbished, or otherwise factory remanufactured.
- Replaced Product or part(s) will be the property of LG.
- Proof of original retail purchase specifying the Product model and date of purchase is required to obtain warranty service under this limited warranty.
- Warranty start date will be ninety (90) days from manufacture date absent valid proof of purchase.

**EXCEPT TO THE EXTENT PROHIBITED BY APPLICABLE LAW, ANY IMPLIED WARRANTY OF MERCHANTABILITY OR FITNESS FOR A PARTICULAR PURPOSE ON THE PRODUCT IS LIMITED IN DURATION TO THE DURATION OF THE ABOVE LIMITED WARRANTY. UNDER NO CIRCUMSTANCES SHALL LG OR ITS U.S. DISTRIBUTORS/DEALERS BE LIABLE FOR ANY INDIRECT, INCIDENTAL, CONSEQUENTIAL, SPECIAL, OR PUNITIVE DAMAGES, INCLUDING, WITHOUT LIMITATION, LOST GOODWILL, LOST REVENUES OR PROFITS, WORK STOPPAGE, IMPAIRMENT OF OTHER GOODS, COST OF REMOVAL AND REINSTALLATION OF THE PRODUCT, LOSS OF USE, OR ANY OTHER DAMAGES WHETHER BASED IN CONTRACT, TORT, OR OTHERWISE. LG’S TOTAL LIABILITY, IF ANY, SHALL NOT EXCEED THE PURCHASE PRICE PAID BY YOU FOR THE PRODUCT.**

**SOME STATES DO NOT ALLOW THE EXCLUSION OR LIMITATION OF INCIDENTAL OR CONSEQUENTIAL DAMAGES OR LIMITATIONS ON HOW LONG AN IMPLIED WARRANTY LASTS, SO THE ABOVE EXCLUSIONS OR LIMITATIONS MAY NOT APPLY TO YOU. THIS LIMITED WARRANTY GIVES YOU SPECIFIC LEGAL RIGHTS AND YOU MAY ALSO HAVE OTHER RIGHTS THAT VARY FROM STATE TO STATE.**

### THIS LIMITED WARRANTY DOES NOT COVER:

- Service trips to deliver, pick up, install, or clean, or to correct wiring or unauthorized repairs.
- Service trips to educate how to assemble, operate, or maintain the Product.
- Damage or failure of the Product to perform during power failures and interrupted or inadequate electrical service.
- Damage or failure of the Product resulting from operating the Product in a corrosive atmosphere or contrary to the Product owner’s manual.

## 28 LIMITED WARRANTY

---

- Damage or failure of the Product caused by accidents, pests and vermin, lightning, wind, fire, floods, acts of nature, or any other causes beyond the control of LG.
- Damage or failure of the Product caused by unauthorized modification or alteration, or if the Product is used for other than the intended purpose.
- Damage or failure of the Product caused by incorrect electrical current or voltage.
- Damage or failure of the Product caused by transportation, storage, and/or handling, including scratches, dents, chips, and/or other damage to the finish of the Product, unless such damage is reported within one (1) week of delivery.
- Damage or missing items to any display, open box, or discounted Product.
- Refurbished Product or any Product sold "As Is", "Where Is", "With all Faults", or similar disclaimer.
- Products with original serial numbers that have been removed, altered, or cannot be readily determined.
- Increases in utility costs and additional utility expenses.
- Any noises associated with normal operation.
- Products used for other than normal and proper household use (e.g., commercial or industrial use, offices, and recreational facilities or vehicles) or contrary to the Product owner's manual.
- Costs associated with removal and reinstallation of the Product for repairs.
- Replacement of batteries, filters, or any consumable parts.
- The removal and reinstallation of the Product if it is installed in an inaccessible location or is not installed in accordance with the Product owner's manual.
- Damage or failure of the Product resulting from misuse, abuse, improper installation, repair, or maintenance. Improper repair includes the use of parts not authorized by LG. Improper installation or maintenance includes installation or maintenance contrary to the Product owner's manual.
- Damage or failure of the Product caused by the use of parts, components, accessories, consumable cleaning products, detergents, chemicals, or any other products or services that are not authorized by LG.

**The cost of repair or replacement under these excluded circumstances shall be borne by You.**

TO OBTAIN WARRANTY SERVICE AND ADDITIONAL INFORMATION

Call 1-800-243-0000 and select the appropriate option from the menu.

Or visit our website at <http://www.lg.com>

Or by mail: LG Electronics Customer Service P.O. Box 240007 Huntsville, AL 35813 ATTN: CIC

## PROCEDURE FOR RESOLVING DISPUTES:

ALL DISPUTES BETWEEN YOU AND LG ARISING OUT OF OR RELATING IN ANY WAY TO THIS LIMITED WARRANTY OR THE PRODUCT SHALL BE RESOLVED EXCLUSIVELY THROUGH BINDING ARBITRATION, AND NOT IN A COURT OF GENERAL JURISDICTION. BINDING ARBITRATION MEANS THAT YOU AND LG ARE EACH WAIVING THE RIGHT TO A JURY TRIAL AND TO BRING OR PARTICIPATE IN A CLASS ACTION.

**Definitions.** For the purposes of this section, references to “LG” mean LG Electronics U.S.A., Inc., its parents, subsidiaries and affiliates, and each of their officers, directors, employees, agents, beneficiaries, predecessors in interest, successors, assigns and suppliers; references to “dispute” or “claim” shall include any dispute, claim or controversy of any kind whatsoever (whether based in contract, tort, statute, regulation, ordinance, fraud, misrepresentation or any other legal or equitable theory) arising out of or relating in any way to the sale, condition or performance of the product or this Limited Warranty.

**Notice of Dispute.** In the event you intend to commence an arbitration proceeding, you must first notify LG in writing at least 30 days in advance of initiating the arbitration by sending a letter to LG at LG Electronics, USA, Inc. Attn: Legal Department- Arbitration 111 Sylvan Avenue, Englewood Cliffs, NJ 07632. You and LG agree to engage in good faith discussions in an attempt to amicably resolve your claim. The notice must provide your name, address, and telephone number; identify the product that is the subject of the claim; and describe the nature of the claim and the relief being sought. If you and LG are unable to resolve the dispute within 30 days, either party may proceed to file a claim for arbitration.

**Agreement to Binding Arbitration and Class Action Waiver.** Upon failure to resolve the dispute during the 30 day period after sending written notice to LG, you and LG agree to resolve any claims between us only by binding arbitration on an individual basis, unless you opt out as provided below. Any dispute between you and LG shall not be combined or consolidated with a dispute involving any other person's or entity's product or claim. More specifically, without limitation of the foregoing, any dispute between you and LG shall not under any circumstances proceed as part of a class or representative action. Instead of arbitration, either party may bring an individual action in small claims court, but that small claims court action may not be brought on a class or representative basis.

**Arbitration Rules and Procedures.** To begin arbitration of a claim, either you or LG must make a written demand for arbitration. The arbitration will be administered by the American Arbitration Association (“AAA”) and will be conducted before a single arbitrator under the AAA’s Consumer Arbitration Rules that are in effect at the time the arbitration is initiated (referred to as the “AAA Rules”) and under the procedures set forth in this section. The AAA Rules are available online at [www.adr.org/consumer](http://www.adr.org/consumer). Send a copy of your written demand for arbitration, as well as a copy of this provision, to the AAA in the manner described in the AAA Rules. You must also send a copy of your written demand to LG at LG Electronics, USA, Inc. Attn: Legal Department- Arbitration 111 Sylvan Avenue Englewood Cliffs, NJ 07632. If there is a conflict between the AAA Rules and the rules set forth in this section, the rules set forth in this section will govern. This arbitration provision is governed by the Federal Arbitration Act. Judgment may be entered on the arbitrator’s award in any court of competent jurisdiction. All issues are for the arbitrator to decide, except that issues relating to the scope and enforceability of the arbitration provision and to the arbitrability of the dispute are for the court to decide. The arbitrator is bound by the terms of this provision.

**Governing Law.** The law of the state of your residence shall govern this Limited Warranty and any disputes between us except to the extent that such law is preempted by or inconsistent with applicable federal law.

**Fees/Costs.** You do not need to pay any fee to begin an arbitration. Upon receipt of your written demand for arbitration, LG will promptly pay all arbitration filing fees to the AAA unless you seek more than \$25,000 in damages, in which case the payment of these fees will be governed by the AAA Rules. Except as otherwise provided for herein, LG will pay all AAA filing, administration and arbitrator fees for any arbitration initiated in accordance with the AAA Rules and this arbitration provision. If you prevail in the arbitration, LG will pay your attorneys’ fees and expenses as long as they are reasonable, by considering factors including, but not limited to, the purchase amount and claim amount. Notwithstanding the foregoing, if applicable law allows for an award of reasonable attorneys’ fees and expenses, an arbitrator can award them to the same extent that a court would. If the arbitrator finds either the substance of your claim or the relief sought in the demand is frivolous or brought for an improper purpose (as measured by the standards set forth in Federal Rule of Civil Procedure 11(b)), then the payment of all arbitration fees will be governed by the AAA Rules. In such a situation, you agree to reimburse LG for all monies previously disbursed by it that are otherwise your obligation to pay under the AAA Rules. Except as otherwise

### 30 LIMITED WARRANTY

---

provided for, LG waives any rights it may have to seek attorneys' fees and expenses from you if LG prevails in the arbitration.

**Hearings and Location.** If your claim is for \$25,000 or less, you may choose to have the arbitration conducted solely on the basis of (1) documents submitted to the arbitrator, (2) through a telephonic hearing, or (3) by an in-person hearing as established by the AAA Rules. If your claim exceeds \$25,000, the right to a hearing will be determined by the AAA Rules. Any in-person arbitration hearings will be held at a location within the federal judicial district in which you reside unless we both agree to another location or we agree to a telephonic arbitration.

**Opt Out.** You may opt out of this dispute resolution procedure. If you opt out, neither you nor LG can require the other to participate in an arbitration proceeding. To opt out, you must send notice to LG no later than 30 calendar days from the date of the first consumer purchaser's purchase of the product by either: (i) sending an e-mail to [optout@lge.com](mailto:optout@lge.com), with the subject line: "Arbitration Opt Out" or (ii) calling 1-800-980-2973. You must include in the opt out e-mail or provide by telephone: (a) your name and address; (b) the date on which the product was purchased; (c) the product model name or model number; and (d) the serial number (the serial number can be found (i) on the product; or (ii) online by accessing <https://www.lg.com/us/support/repair-service/schedule-repair-continued> and clicking on "Find My Model & Serial Number").

You may only opt out of the dispute resolution procedure in the manner described above (that is, by e-mail or telephone); no other form of notice will be effective to opt out of this dispute resolution procedure. Opting out of this dispute resolution procedure will not affect the coverage of the Limited Warranty in any way, and you will continue to enjoy the full benefits of the Limited Warranty. If you keep this product and do not opt out, then you accept all terms and conditions of the arbitration provision described above.

---

# APPENDIX

## U.S. Patent Protection

This product is covered by one or more of the following patents in the U.S.

### Patents

10,123,672; 10,194,779; 10,299,650; 10,299,651; 10,314,453; 10,342,404; 10,405,717;  
10,405,719; 10,433,688; 10,478,036; 10,492,653; 10,531,777; 10,542,860; 10,561,287;  
10,561,291; 10,568,474; 10,568,475; 10,568,476; 10,575,689; 10,582,821; 10,610,075;  
10,617,269; 10,617,270; 10,631,698; 10,638,901; 10,638,903; 10,646,082; 10,646,806;  
10,660,493; 10,750,917;

OTHER PATENTS PENDING



LG Customer Information Center

For inquiries or comments,  
visit [www.lg.com](http://www.lg.com) or call:

1-800-243-0000 U.S.A.  
1-888-542-2623 CANADA

Register your product Online!

[www.lg.com](http://www.lg.com)