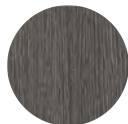


CUBO 2-Seater Right Arm

RATANA

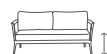


Weave: Resin
Finish: Creamy Oak



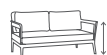
Frame: Aluminum
Finish: Pearl Grey

FN61252COK-R



Seat Height*: 18" w/cushion

Overall Height: 25.5"



Arm Height: 25.5"

Weight: 77 LBS



Depth: 39.5"



Width: 57.75"



TECHNICAL INFORMATION

- Weave: Resin – Creamy Oak COK round 7mm
Aluminum – Pearl Grey PGR
- Frame: Aluminum
- Modular design of sectional provides flexibility and style
- Chairs with wood grain finished aluminum legs
- Chair with slanted back and seat panel dropping inwards to offer great comfort
- Interlocking system to secure sectional pieces
- Max. weight load: 350 LBS per seat
- Contract quality
- For outdoor use only

www.ratana.com

Toll Free Phone: 866.919.1881
Toll Free Fax: 888.880.8209
Email: sales@ratana.com
Website: www.ratana.com