



**REFERENCE GUIDE**  
AUDIOPHILE SOUNDS  
FOR THE OUTDOORS

**Technical Specifications**

**SATELLITE SPEAKERS**

Design	<b>GO4</b> 4" Satellite Speaker	<b>GO6</b> 6" Satellite Speaker
<b>Crossover</b>	2nd-order electroacoustic at 2.5 kHz	2nd-order electroacoustic at 2.5 kHz
<b>High Frequency Driver</b>	3/4" (1.9 cm) X-PAL™ dome, ferro-fluid damped / cooled, Reduced Edge Diffraction (RED™) Technology, Perforated Phase-Aligning (PPA™) Tweeter Lens, die-cast low diffraction baffle/heat sink	3/4" (1.9 cm) X-PAL™ dome, ferro-fluid damped / cooled, Reduced Edge Diffraction (RED™) Technology, Perforated Phase-Aligning (PPA™) Tweeter Lens, die-cast low diffraction baffle/heat sink
<b>Bass/Midrange Driver</b>	4" (10 cm) mineral-filled polypropylene cone, Nitrile-Butadiene Rubber (NBR) surround	6" (16 cm) mineral-filled polypropylene cone, Nitrile-Butadiene Rubber (NBR) surround
<b>Low Frequency Extension</b>	80 Hz	77 Hz
<b>Frequency Response (0-15 degree window)</b>	±3 dB from 140 Hz – 20 kHz	±3 dB from 125 Hz – 20 kHz
<b>Sensitivity — Outdoor</b>	87 dB	92 dB
<b>Sensitivity — Anechoic</b>	83 dB	88 dB
<b>Suitable Amplifier Power Range</b>	15 – 120 W	15 – 120 W
<b>Maximum Input Power</b>	60 W	80 W
<b>Impedance</b>	Compatible with 8 ohms	Compatible with 8 ohms
<b>Dimensions (diameter x depth)</b>	5-1/4" (diameter) x 8" (depth) (13.4 cm x 20.3 cm)	7" (diameter) x 10" (depth) (17.8 cm x 25.4 cm)
<b>Weight</b>	4.3 lbs (2.6 kg)	5.7 lbs (2.9 kg)
<b>Finish</b>	Satin Bronze	Satin Bronze
<b>Warranty</b>	3 Year Limited Warranty	3 Year Limited Warranty



**INGROUND SUBWOOFERS**

Design	<b>GO10SW</b> 10" Inground Subwoofer	<b>GO12SW</b> 12" Inground Subwoofer
<b>Bass Driver</b>	10" (25.4 cm) high compliance, mica-filled polypropylene with stitched Nitrile-Butadiene Rubber (NBR) surround, 2" high-power oversized voice coil, 4-layer on fiberglass bobbin	12" (31 cm) high compliance, mica-filled polypropylene with stitched Nitrile-Butadiene Rubber (NBR) surround, 2.5" high-power oversized voice coil, 4-layer on fiberglass bobbin
<b>Low Frequency Extension</b>	30 Hz	26 Hz
<b>Frequency Response (0-15 degree window)</b>	±3 dB from 33 – 135 Hz	±3 dB from 28 – 120 Hz
<b>Sensitivity — Outdoor</b>	88 dB	91 dB
<b>Sensitivity — Anechoic</b>	82 dB	85 dB
<b>Suitable Amplifier Power Range</b>	15 – 1000 W	15 – 1000 W
<b>Maximum Input Power</b>	400 W	500 W
<b>Impedance</b>	Compatible with 8 ohms	Compatible with 8 ohms
<b>Dimensions (h x d)</b>	24" (height) x 18" (depth) (60.9 cm x 45.7 cm)	33" (height) x 35" (depth) (83.8 cm x 88.9 cm)
<b>Weight</b>	48 lbs (21.8 kg)	62 lbs (28.1 kg)
<b>Canopy Finish</b>	Textured Copper Color	Textured Copper Color
<b>Warranty</b>	3 Year Limited Warranty	3 Year Limited Warranty



© Copyright Paradigm Electronics Inc. Paradigm reserves the right to change specifications and/or features without notice as design improvements are incorporated.

Individual product photography: Jason Hartog Photography

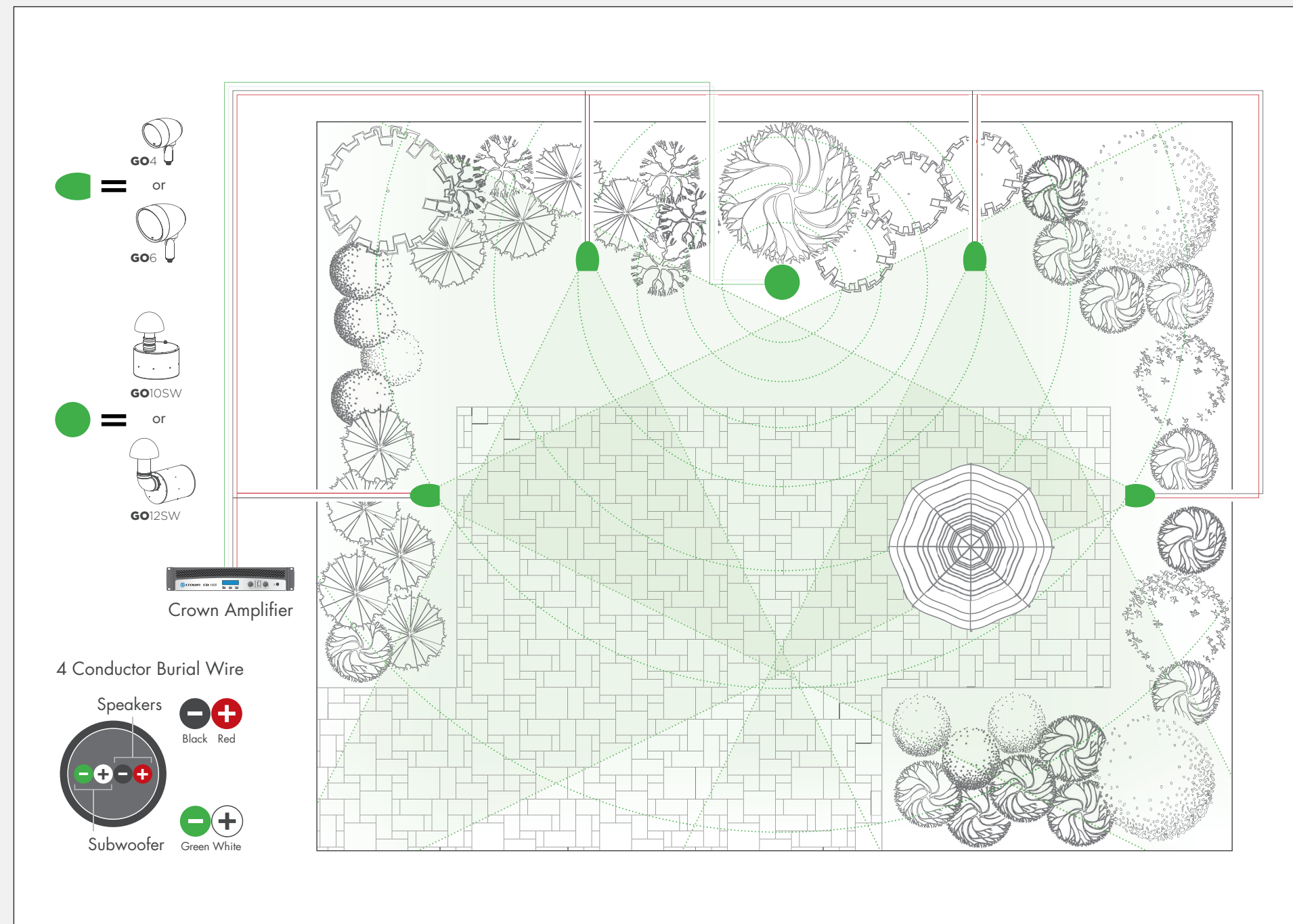
**Paradigm Electronics Inc.**  
205 Annagem Blvd., Mississauga, ON L5T 2V1

T 905.564.1994 F 905.696.2847

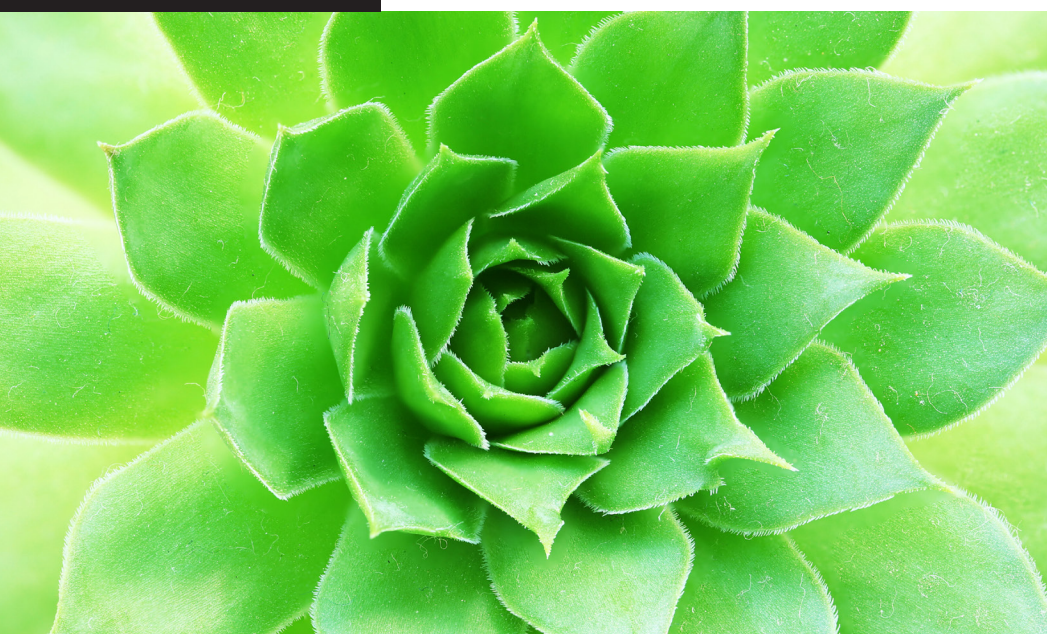
paradigm.com

Rev. 050318

**DESIGN LAYOUT EXAMPLE**



**DESIGN GRID FOR CUSTOM LAYOUT**



# GARDEN OASIS AUDIO SETTINGS CHART

- Award Winning Paradigm Performance:** Garden Oasis Series incorporates 35 years of acoustic innovation.
- Scalable System:** Fits any outdoor space.
- Industry Leading Warranty:** 3 years on satellite speakers and subwoofers.
- Easy Installation:** Quick Connect mounting accessories speed up installation and allow for better wire management.
- 70V or 100V Options:** Available on each satellite speaker.
- Mono/Stereo Configurations:** Setup for mono or stereo depending on customer requirements.
- Protective Speaker Covers:** Satellite speakers include protective covers for use during the off-season.
- Tech Support:** Use Paradigm Tech Support to ask any questions.
- Earn Reward Points for Each Garden Oasis Sold:** Points are redeemable for cool Paradigm/Anthem products.

## Tools Required (not included)

- Shovel
- Cable Strippers
- Phillips Screwdriver
- Flathead Screwdriver
- Wrench

## Mounting Options (sold separately)

- Ground Stake** for gardens.
- Surface Mount** for decks and wall mounting.
- Inground Conduit Box** for a superior watertight protection.

**Finish:** Satin Bronze

**3 Year Limited Warranty**

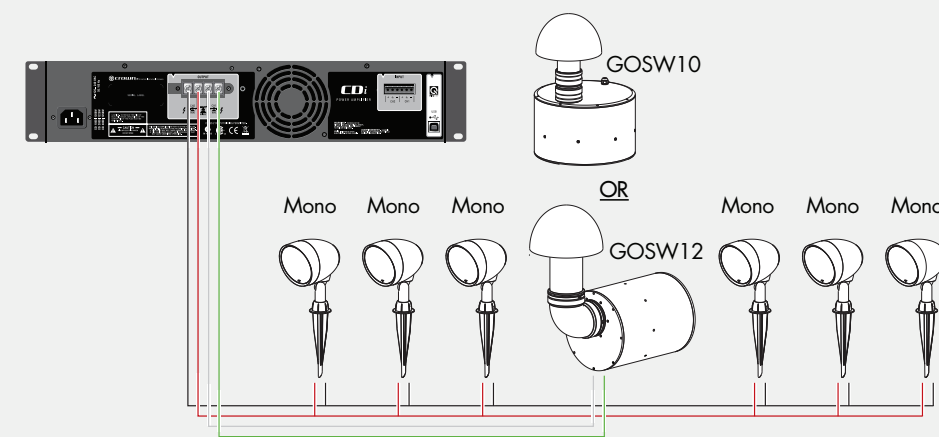
INSTALLATION USING LONG WIRES (100 feet or longer)					
	CHANNEL #1 ON AMP	CHANNEL #2 ON AMP	PRESETS ON CROWN AMP	PRESET NAME	POWER OUTPUT
	Wire Product to Channel #1 on the Crown Amplifier	Wire Product to Channel #2 on the Crown Amplifier	Select the Preset number on the Crown Amplifier specified below		Signal level provided to subwoofer / speakers
GO10SW or GO12SW plus GO4 or GO6 satellite speakers	GO10SW	GO4	Preset 2 for GO10SW and GO4	GO4_10SW	8 ohm / 70V hybrid
	GO10SW	GO6	Preset 3 for GO10SW and GO6	GO6_10SW	8 ohm / 70V hybrid
	GO12SW	GO4	Preset 4 for GO12SW and GO4	GO4_12SW	8 ohm / 70V hybrid
	GO12SW	GO6	Preset 5 for GO12SW and GO6	GO6_12SW	8 ohm / 70V hybrid
NO subwoofer and GO4 or GO6 satellite speakers	GO4	GO4	Preset 10 for GO4 in Mono	GO_4_MO	NA / 70V
	GO6	GO6	Preset 11 for GO6 in Mono	GO_6_MO	NA / 70V
	GO4	GO4	Preset 12 for GO4 in Stereo	GO_4_ST	NA / 70V
	GO6	GO6	Preset 13 for GO6 in Stereo	GO_6_ST	NA / 70V

INSTALLATION USING SHORT WIRES (less than 100 feet) FOR 4 OR FEWER SPEAKERS					
	CHANNEL #1 ON AMP	CHANNEL #2 ON AMP	PRESETS ON CROWN AMP	PRESET NAME	POWER OUTPUT
	Wire Product to Channel #1 on the Crown Amplifier	Wire Product to Channel #2 on the Crown Amplifier	Select the Preset number on the Crown Amplifier specified below		Signal level provided to subwoofer / speakers
GO10SW or GO12SW plus 4 or fewer GO4 or GO6 satellite speakers	GO10SW	GO4	Preset 6 for GO10SW and GO 4	8GO4_10SW	8 ohm / 8 ohm
	GO10SW	GO6	Preset 7 for GO10SW and GO 6	8GO6_10SW	8 ohm / 8 ohm
	GO12SW	GO4	Preset 8 for GO12SW and GO 4	8GO4_12SW	8 ohm / 8 ohm
	GO12SW	GO6	Preset 9 for GO12SW and GO 6	8GO6_12SW	8 ohm / 8 ohm
No Subwoofer and 4 or fewer GO4 or GO6 satellite speakers	GO4	GO4	Preset 14 for GO4 in Mono	8GO_4_MO	NA / 8 ohm
	GO6	GO6	Preset 15 for GO6 in Mono	8GO_6_MO	NA / 8 ohm
	GO4	GO4	Preset 16 for GO4 in Stereo	8GO_4_ST	NA / 8 ohm
	GO6	GO6	Preset 17 for GO6 in Stereo	8GO_6_ST	NA / 8 ohm

SET DIAL ON SATELLITE SPEAKER	
Remove the cap from the rear of the satellite speaker and position the dial to the wattage setting listed below	
Speakers: 1-12	30W (or less)
Speakers: 13-24	15W (or less)
Speakers: 25-50	7.5W (or less)
Speakers: 50-100	3.8W (or less)

SET DIAL ON SATELLITE SPEAKER	
Remove the cap from the rear of the satellite speaker and position the dial to the wattage setting listed below	
8 ohms	

**Typical Installation** using 6 satellite speakers, 1 inground subwoofer and 1 Crown amplifier.



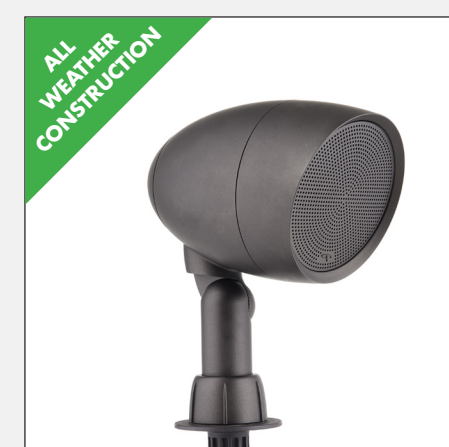
**Reduced Edge Diffraction (RED™) Technology** Patent Pending



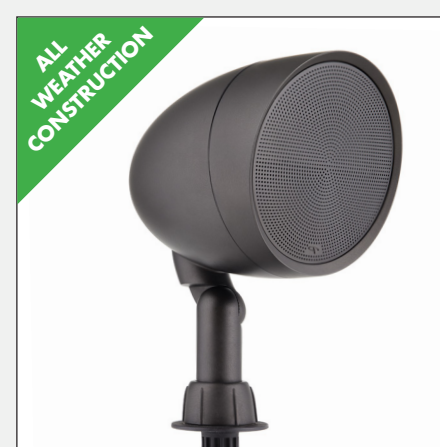
**Protective Speaker Cover** for off season use



**70V or 100V Setting Options**



**GO4 4" Satellite Speaker**



**GO6 6" Satellite Speaker**



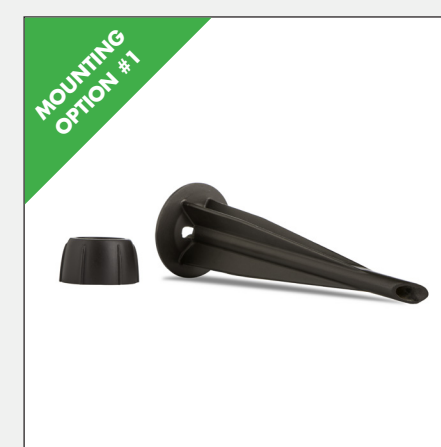
**GO10SW 10" Subwoofer**



**GO12SW 12" Subwoofer**



**70V Crown Amplifier** with Paradigm DSP Presets (available direct from Paradigm)



**Ground Stake** (sold separately)



**Inground Conduit Box** (sold separately)



**Surface Mount** (sold separately)