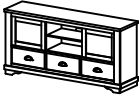
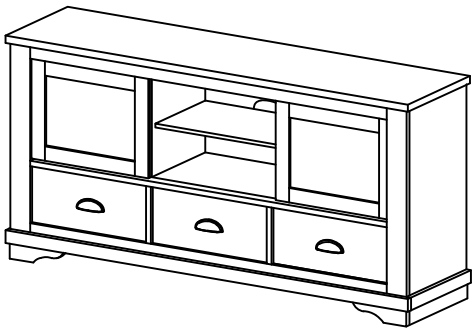


ASSEMBLY INSTRUCTIONS

ITEM NO : B8100 - 7 TV STAND

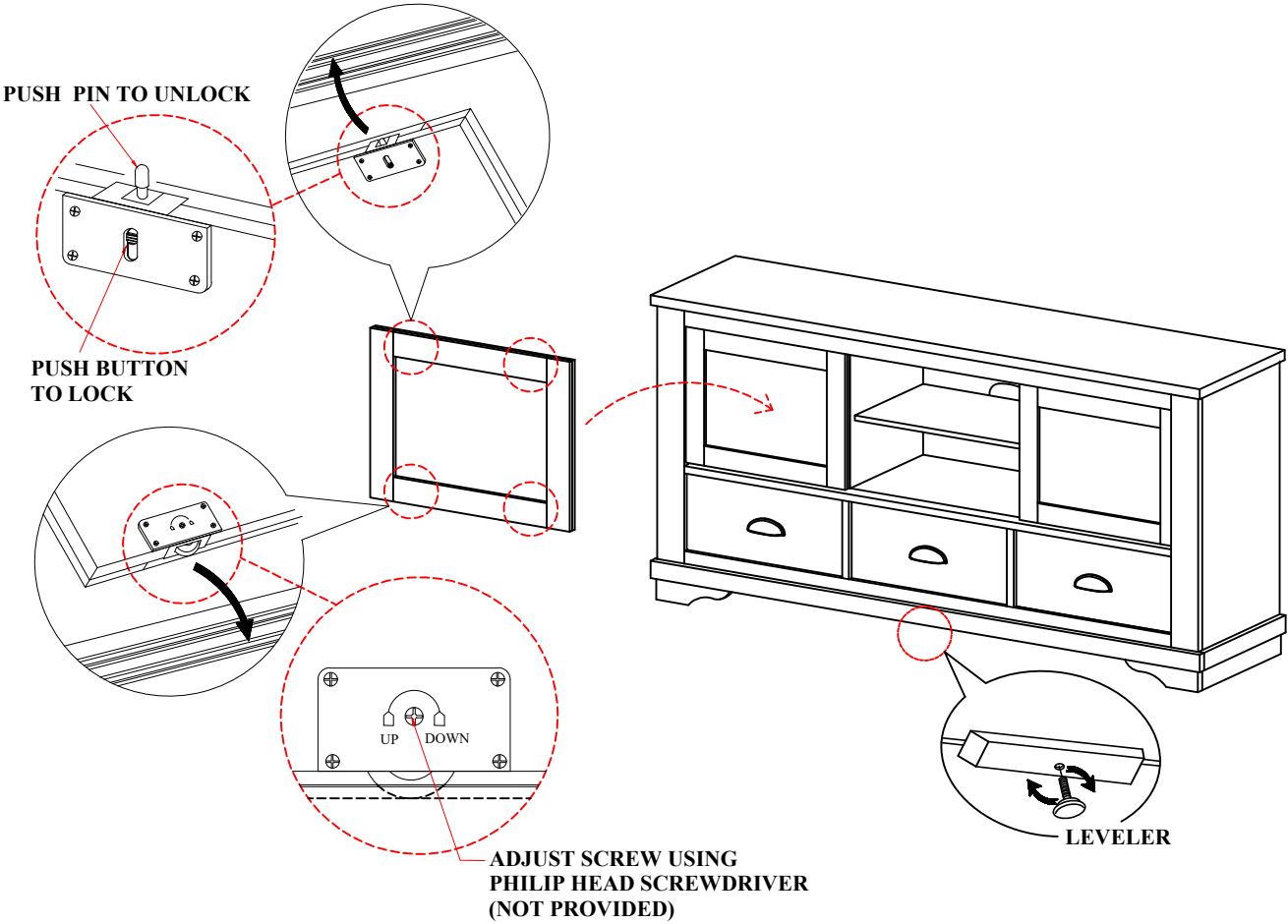
BOX OF TV STAND

ITEM	DRAWING	DESCRIPTION	QTY
A		TV STAND	1



**COMPLETED TV STAND
ASSEMBLY**

NOTE : DOORS ARE PRE-ASSEMBLED. ADJUST THE DOOR GLIDES TO LEVEL THE DOOR IF NECESSARY



NOTE : ADJUST THE LEVELER ONLY IF IT IS BEING PLACED ON UNEVEN SURFACE.

THE ANTI TIPPING HARDWARE IS LOCATED IN THE RIGHT SIDE BOTTOM DRAWER OF THE TV STAND.

**NOTE : MUST TIGHTEN SCREWS PERIODICALLY. WITH USE SCREW MAY BECOME LOOSE.
CHECK TIGHTNESS OF ALL SCREW EVERY 6-8 WEEKS.**

CLEANING INSTRUCTION

After assembly, clean & polish the completed parts if necessary with soft cloth and industrial recognized furniture polish

MADE IN MALAYSIA