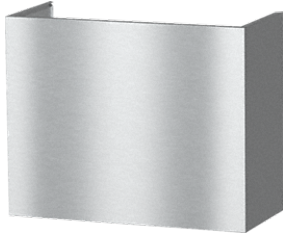


DRDC 3024

Duct Cover

Chimney for concealing the ducting and adjusting the height to the wall unit.



- Suitable for DAR 1220 Range Hood
- Made from high-quality brushed stainless steel
- Can be combined with all other 30 in wide chimneys
- 24" (610 mm) high, 30" (760 mm) wide, 14" (340 mm) deep