




Assembly Instruction

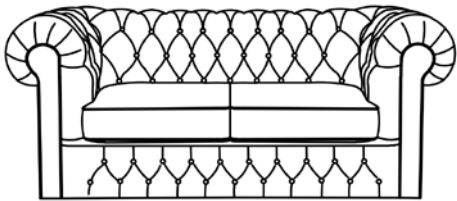



ITEM NO.: 9335BRW-3

SOFA

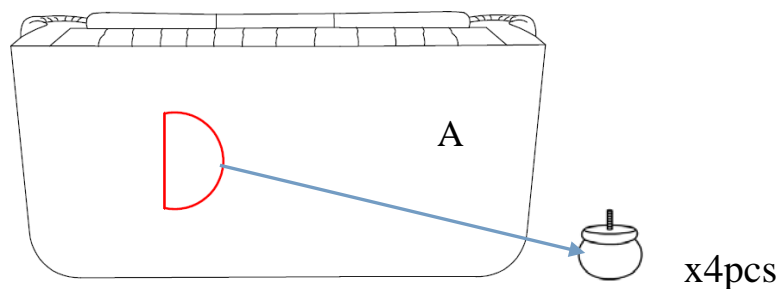
 Legs & hardware are stored at the bottom of the seat. Please take out the legs and hardware for assembly.

NOTE: Do not use power tools for assembly. Power tools increase the risk of over tightening which lead to splitting or cracking the wood.

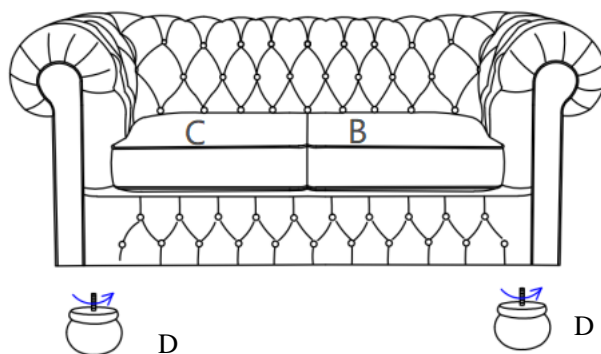
COMPONENT LIST (SOFA)

NO.	DRAWING	QTY	DESCRIPTION
A		1 PC	SEAT
B		1PC	RSF SEAT CUSHION
C		1PC	LSF SEAT CUSHION
D		4 PCS	WOODEN LEG

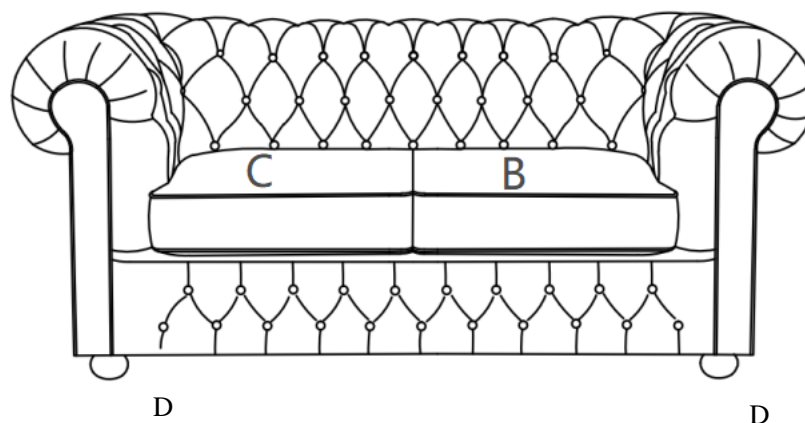
STEP#1 Take out the legs from the bottom of the seat for assembly.



STEP #2 Align the legs to the bottom seat of the pre-drilled holes, rotate to tighten the legs.



STEP#3 Sofa Assembly is completed.



Care instruction for breathable faux leather furniture.

In order to maintain the original appearance of your breathable faux leather furniture, please follow below simple care procedures:

- Avoid exposing furniture directly to sunlight or heating and air conditioning outlets. Sunlight and/or exposure to heating and air conditioning outlets will fade/damage breathable faux leather.
- Vacuum or wipe with a sofa cloth to remove dust.



For items use on wooden floor, hard surfaces or carpets, it is recommended to install protective pads under all legs and supports to avoid/prevent from damages/scratches and discoloration.