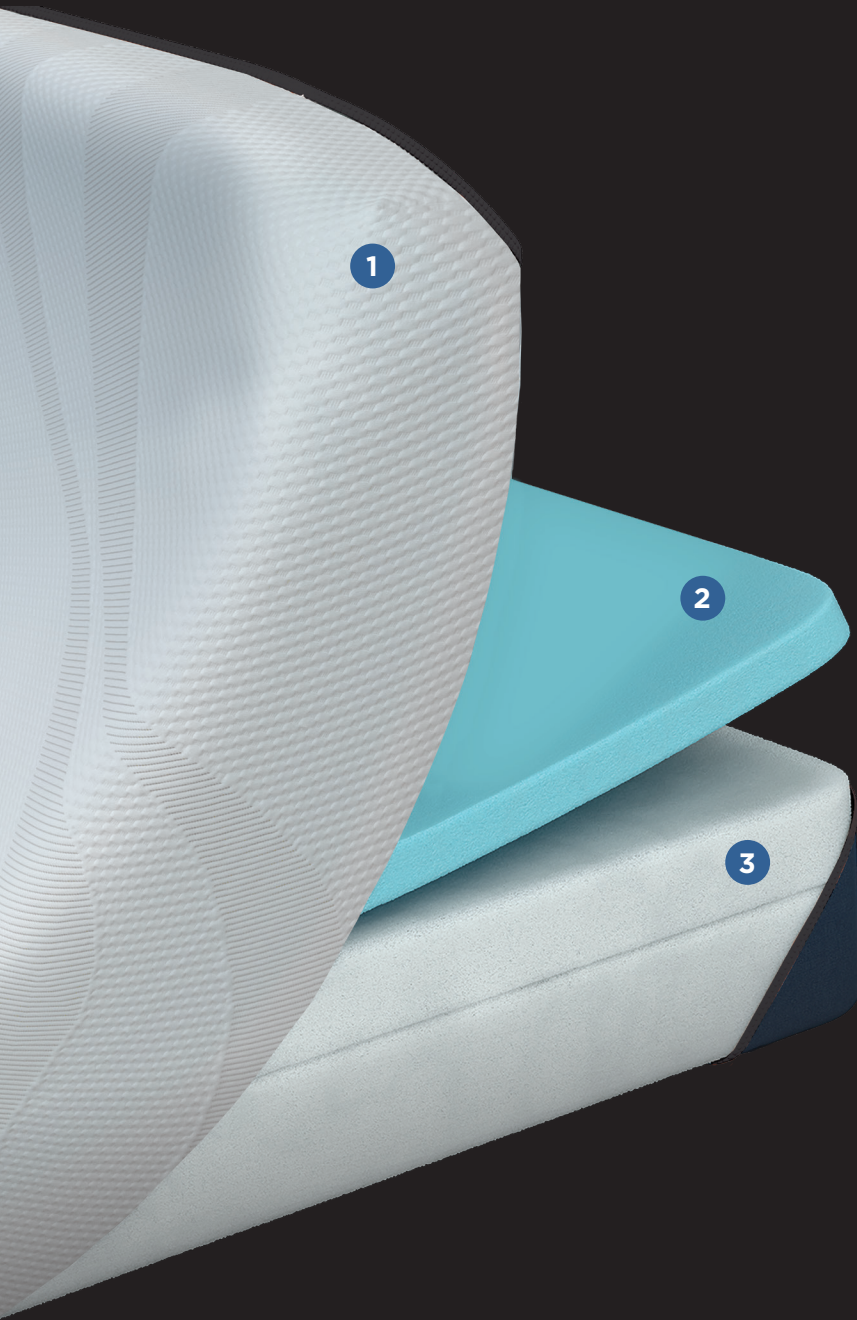




# TEMPUR-ALIGN™

## SOFT • 10" PROFILE



- 1 Premium Fabric Cover**  
Super-Stretch cover with moisture wicking fibres to draw moisture away from the body to help keep sleepers dry and comfortable.
- 2 TEMPUR-ES® Comfort Layer**  
Slip into a cushioning sleep with softer top layers of TEMPUR® material
- 3 Base Layer**  
Serves as the support core for the TEMPUR® layers and helps disperse the heat from the mattress.

10 YEAR WARRANTY  
COMPATIBLE WITH LIFESTYLE BASES

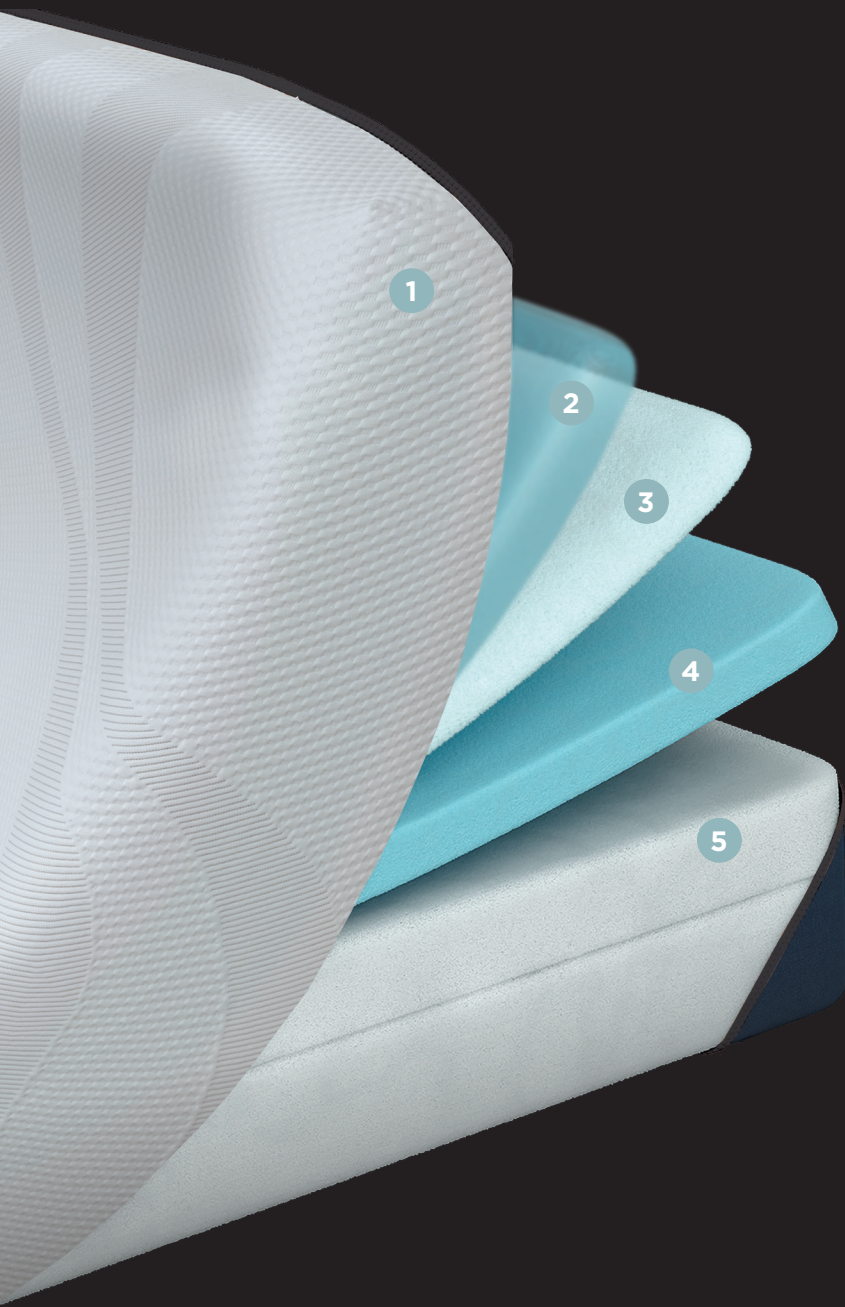


**LIFE-CHANGING SLEEP.™**



# TEMPUR-ALIGN™

## MEDIUM • 11" PROFILE



- 1 Premium Fabric Cover**  
Super-Stretch cover with moisture wicking fibres to draw moisture away from the body to help keep sleepers dry and comfortable.
- 2 Temperature Control beneath the cover**  
Cool-To-The-Touch phase change material just beneath the cover draws heat away from the body to help keep sleepers comfortable during the night.
- 3 TEMPUR-ES® Material**  
Slip into a cushioning sleep with softer top layers of TEMPUR material.
- 4 Original TEMPUR® Support Layer**  
Advanced adaptability that automatically responds to your body temperature, weight and shape for truly personalized comfort and support.
- 5 Base Layer**  
Serves as the support core for the TEMPUR® layers and helps disperse the heat from the mattress.

10 YEAR WARRANTY

COMPATIBLE WITH LIFESTYLE BASES

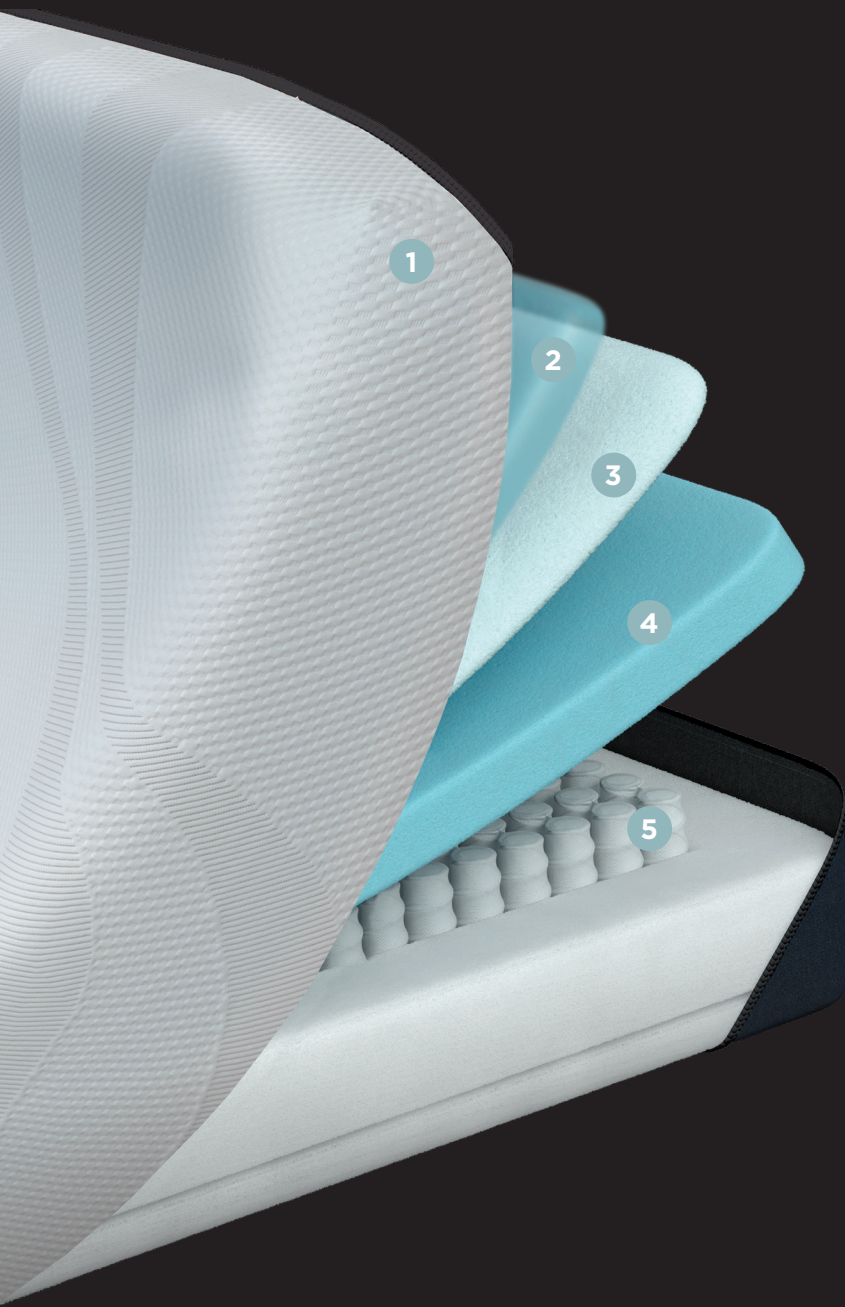


LIFE-CHANGING SLEEP.™



# TEMPUR-ALIGN™

## HYBRID MEDIUM • 11" PROFILE



- 1 Premium Fabric Cover**  
Super-Stretch cover with moisture wicking fibres to draw moisture away from the body to help keep sleepers dry and comfortable.
- 2 Temperature Control beneath the cover**  
Cool-To-The-Touch phase change material just beneath the cover draws heat away from the body to help keep sleepers comfortable during the night.
- 3 TEMPUR-ES® Comfort Layer**  
Softer feel works in combination with other materials to support and relax.
- 4 Original TEMPUR® Support Layer**  
Advanced adaptability that automatically responds to your body temperature, weight and shape for truly personalized comfort and support.
- 5 Hybrid Technology**  
1000+ premium spring coils designed in-house to work with TEMPUR material.

10 YEAR WARRANTY

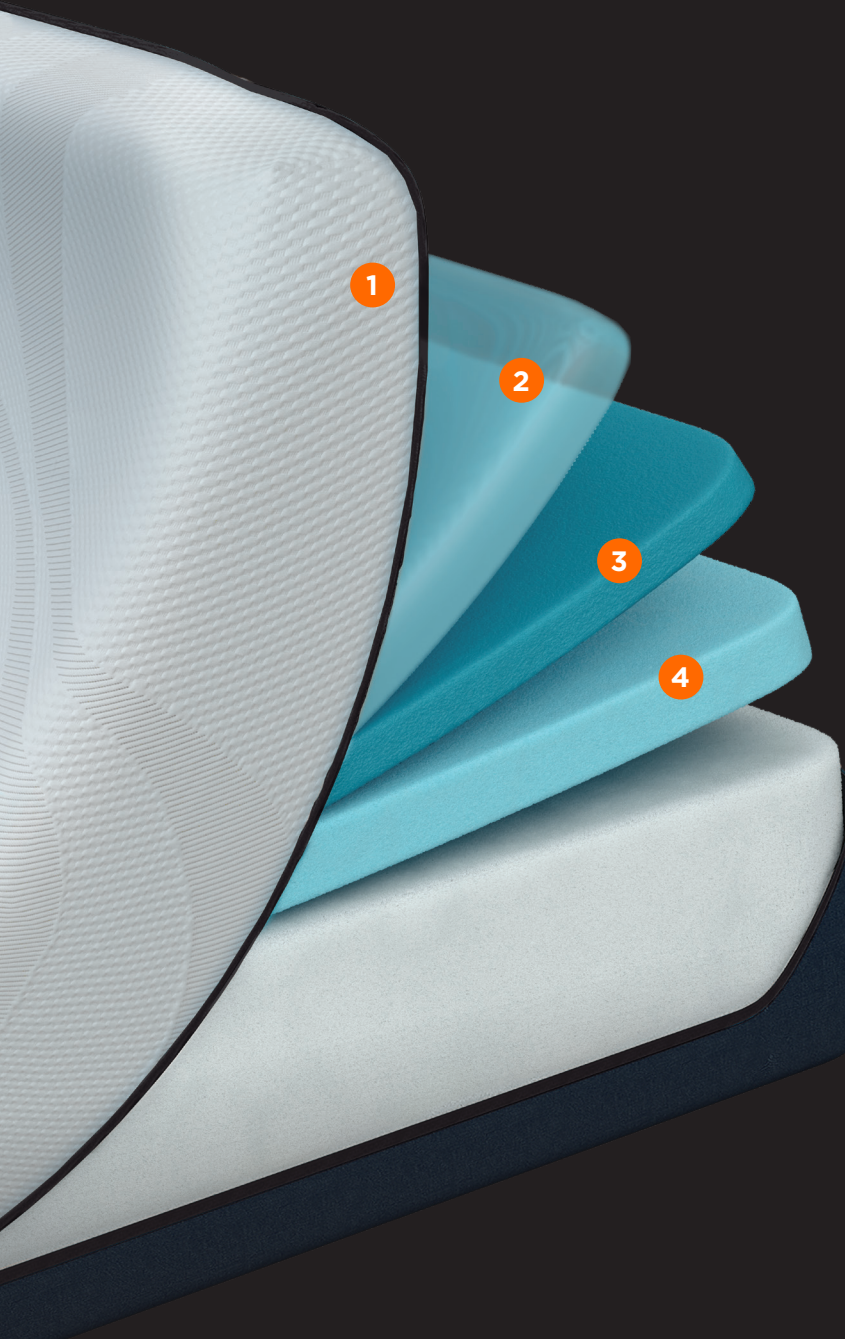
COMPATIBLE WITH LIFESTYLE BASES



**LIFE-CHANGING SLEEP.™**



# TEMPUR-PROALIGN™



## FIRM • 12" PROFILE

- 1 Easy Refresh Top Cover**  
Premium Knit, Super-Stretch cover with moisture wicking fibres to draw moisture away from the body to help keep sleepers dry and comfortable. Simple to remove, wash and replace.
- 2 Temperature Control beneath the cover**  
Cool-To-The-Touch phase change material just beneath the cover draws heat away from the body to help keep sleepers comfortable during the night.
- 3 TEMPUR-APR™ Comfort Layer**  
Offers the most pressure relieving TEMPUR® material ever created for deeper more rejuvenating sleep.
- 4 Original TEMPUR® Support Layer**  
Advanced adaptability that automatically responds to your body temperature, weight and shape for truly personalized comfort and support.

10 YEAR WARRANTY

COMPATIBLE WITH LIFESTYLE BASES

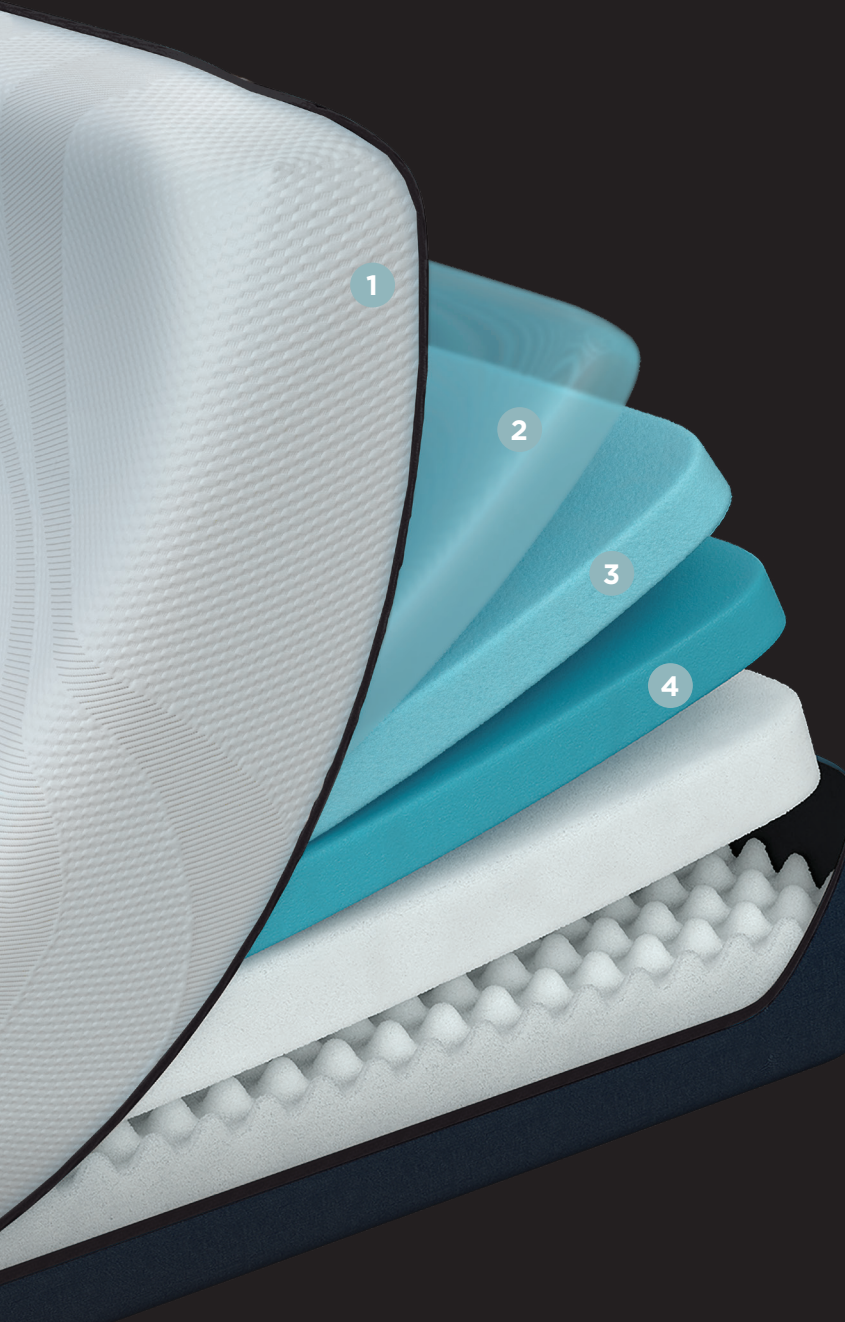


**LIFE-CHANGING SLEEP.™**





# TEMPUR-PROALIGN™



## MEDIUM • 12" PROFILE

- 1 Easy Refresh Top Cover**  
Premium Knit, Super-Stretch cover with moisture wicking fibres to draw moisture away from the body to help keep sleepers dry and comfortable. Simple to remove, wash and replace.
- 2 Temperature Control beneath the cover**  
Cool-To-The-Touch phase change material just beneath the cover draws heat away from the body to help keep sleepers comfortable during the night.
- 3 Original TEMPUR® Comfort Layer**  
Advanced adaptability for truly personalized comfort and support
- 4 TEMPUR-APR™ Support Layer**  
Offers the most pressure relieving TEMPUR® material ever created for deeper more rejuvenating sleep.

10 YEAR WARRANTY  
COMPATIBLE WITH LIFESTYLE BASES

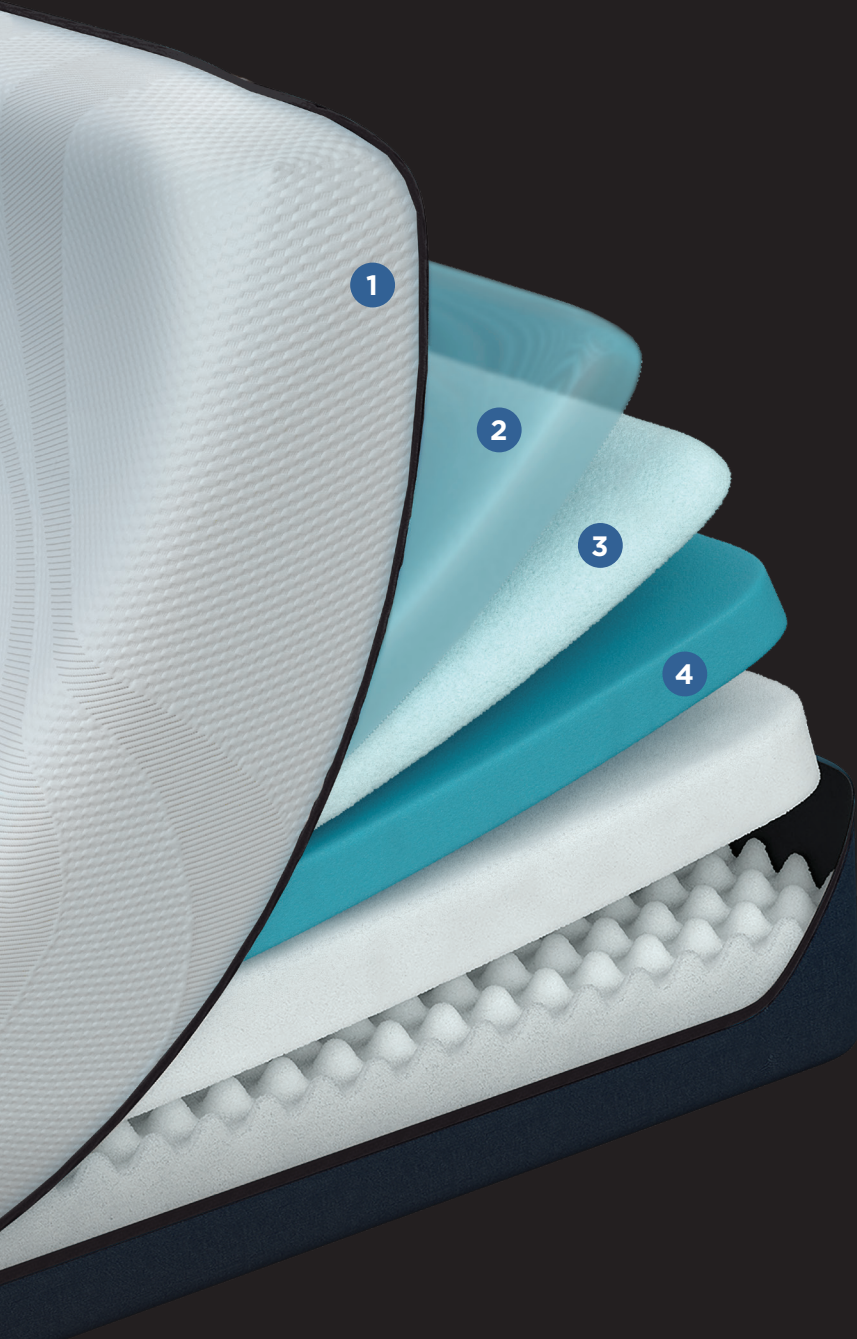


LIFE-CHANGING SLEEP.™



# TEMPUR-PROALIGN™

## SOFT • 12" PROFILE



- 1 Easy Refresh Top Cover**  
Premium Knit, Super-Stretch cover with moisture wicking fibres to draw moisture away from the body to help keep sleepers dry and comfortable. Simple to remove, wash and replace.
- 2 Temperature Control beneath the cover**  
Cool-To-The-Touch phase change material just beneath the cover draws heat away from the body to help keep sleepers comfortable during the night.
- 3 TEMPUR-ES® Comfort Layer**  
Slip into a cushioning sleep with softer top layers of TEMPUR® material
- 4 TEMPUR-APR™ Support Layer**  
Our most pressure relieving material ever made for deeper, more rejuvenating sleep

10 YEAR WARRANTY

COMPATIBLE WITH LIFESTYLE BASES

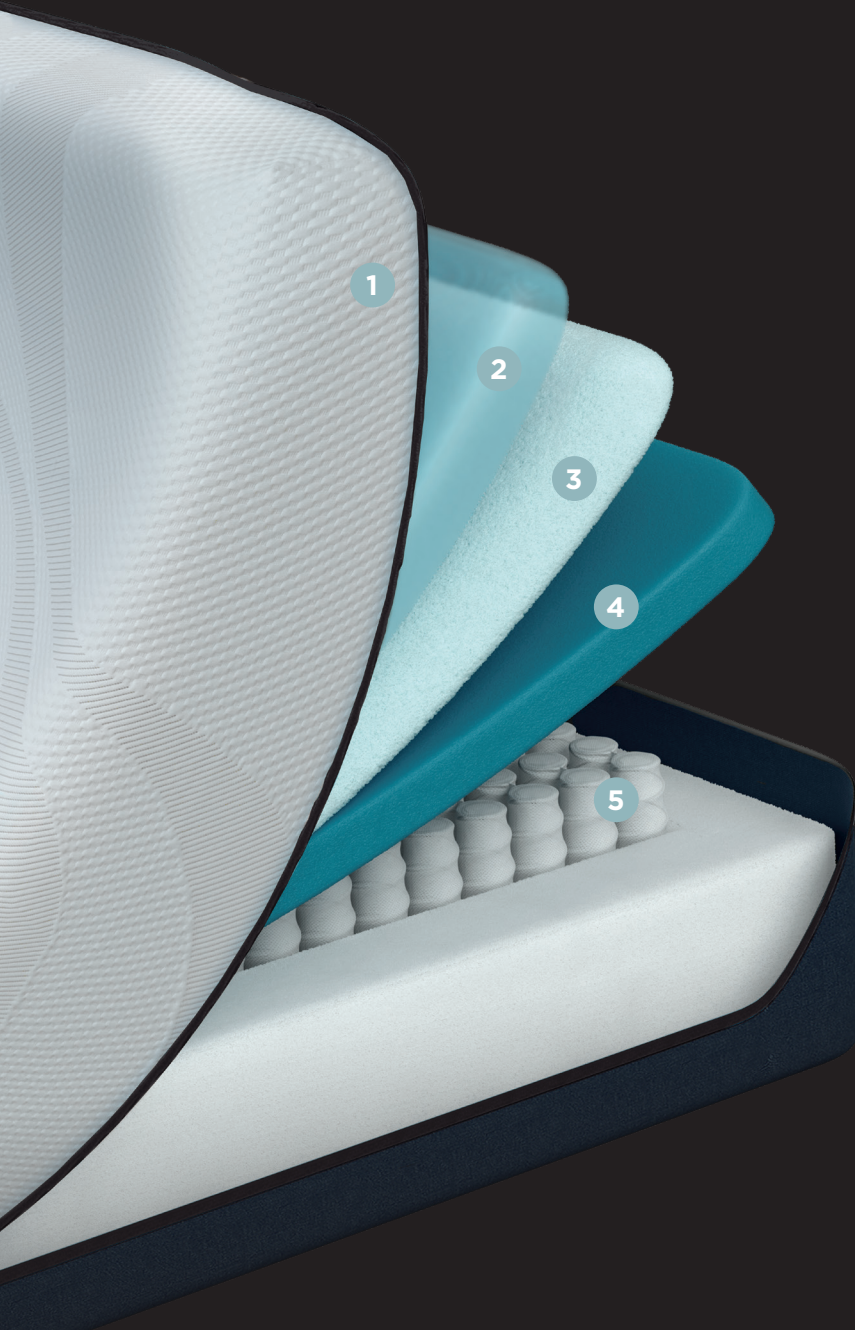


**LIFE-CHANGING SLEEP.™**



# TEMPUR-PROALIGN™

## HYBRID MEDIUM • 12" PROFILE



- 1 Easy Refresh Top Cover**  
Premium Knit, Super-Stretch cover with moisture wicking fibres to draw moisture away from the body to help keep sleepers dry and comfortable. Simple to remove, wash and replace.
- 2 Temperature Control beneath the cover**  
Cool-To-The-Touch phase change material just beneath the cover draws heat away from the body to help keep sleepers comfortable during the night.
- 3 TEMPUR-ES® Comfort Layer**  
Softer feel works in combination with other materials to support and relax.
- 4 TEMPUR-APR™ Support Layer**  
Offers the most pressure relieving TEMPUR® material ever created for deeper more rejuvenating sleep.
- 5 Hybrid Technology**  
1000+ premium spring coils designed in-house to work with TEMPUR material.

10 YEAR WARRANTY

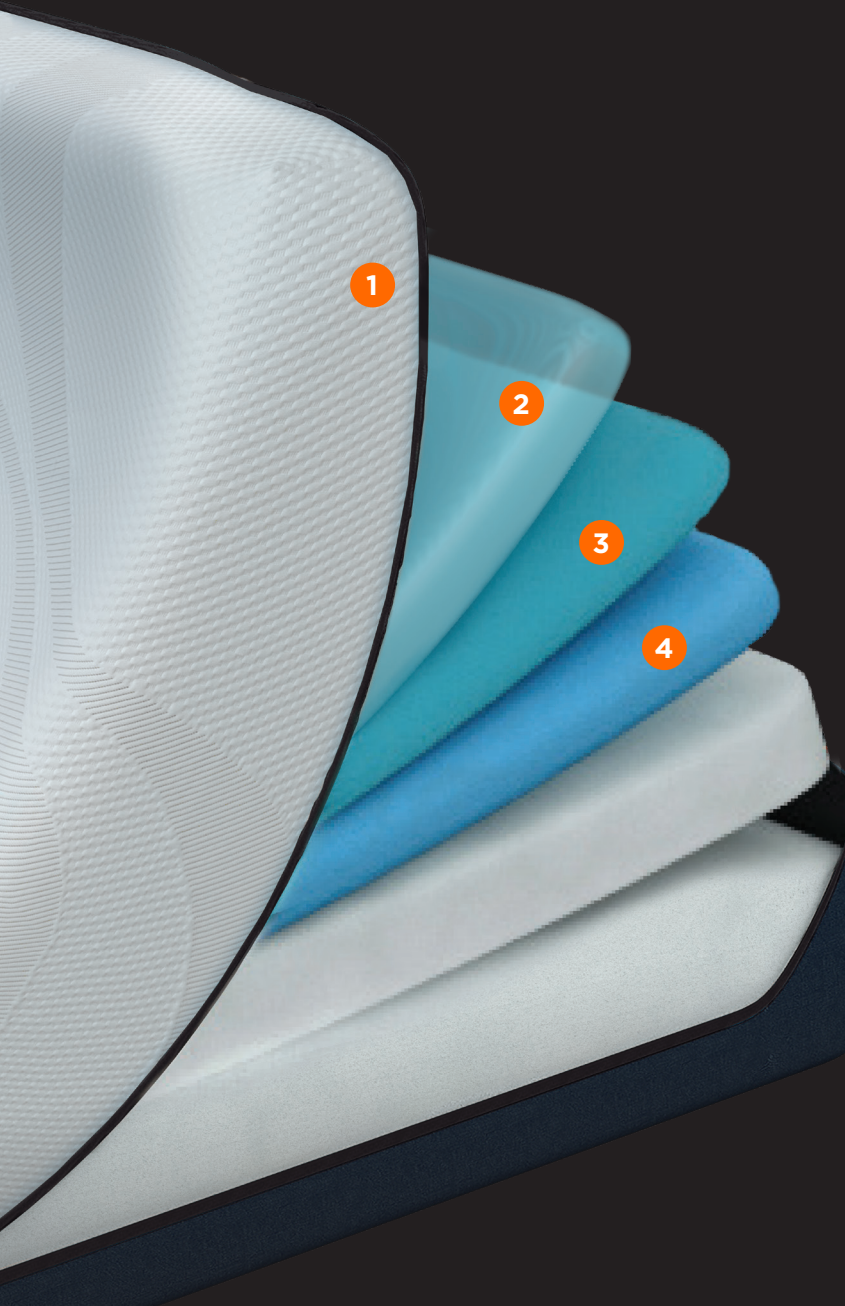
COMPATIBLE WITH LIFESTYLE BASES



LIFE-CHANGING SLEEP.™



# TEMPUR-LUXEALIGN™



## FIRM • 13" PROFILE

- 1 Easy Refresh Top Cover**  
Premium Knit, Super-Stretch cover with moisture wicking fibres to draw moisture away from the body to help keep sleepers dry and comfortable. Simple to remove, wash and replace.
- 2 Temperature Control beneath the cover**  
Cool-To-The-Touch phase change material just beneath the cover draws heat away from the body to help keep sleepers comfortable during the night.
- 3 Original TEMPUR® Comfort Layer**  
Advanced adaptability that automatically responds to your body temperature, weight and shape for truly personalized comfort and support.
- 4 TEMPUR-APR+™ Support Layer**  
TEMPUR-APR+ delivers all the pressure relief of original APR with an even tighter, more advanced cell structure for ultra-conforming comfort.

10 YEAR WARRANTY

COMPATIBLE WITH LIFESTYLE BASES

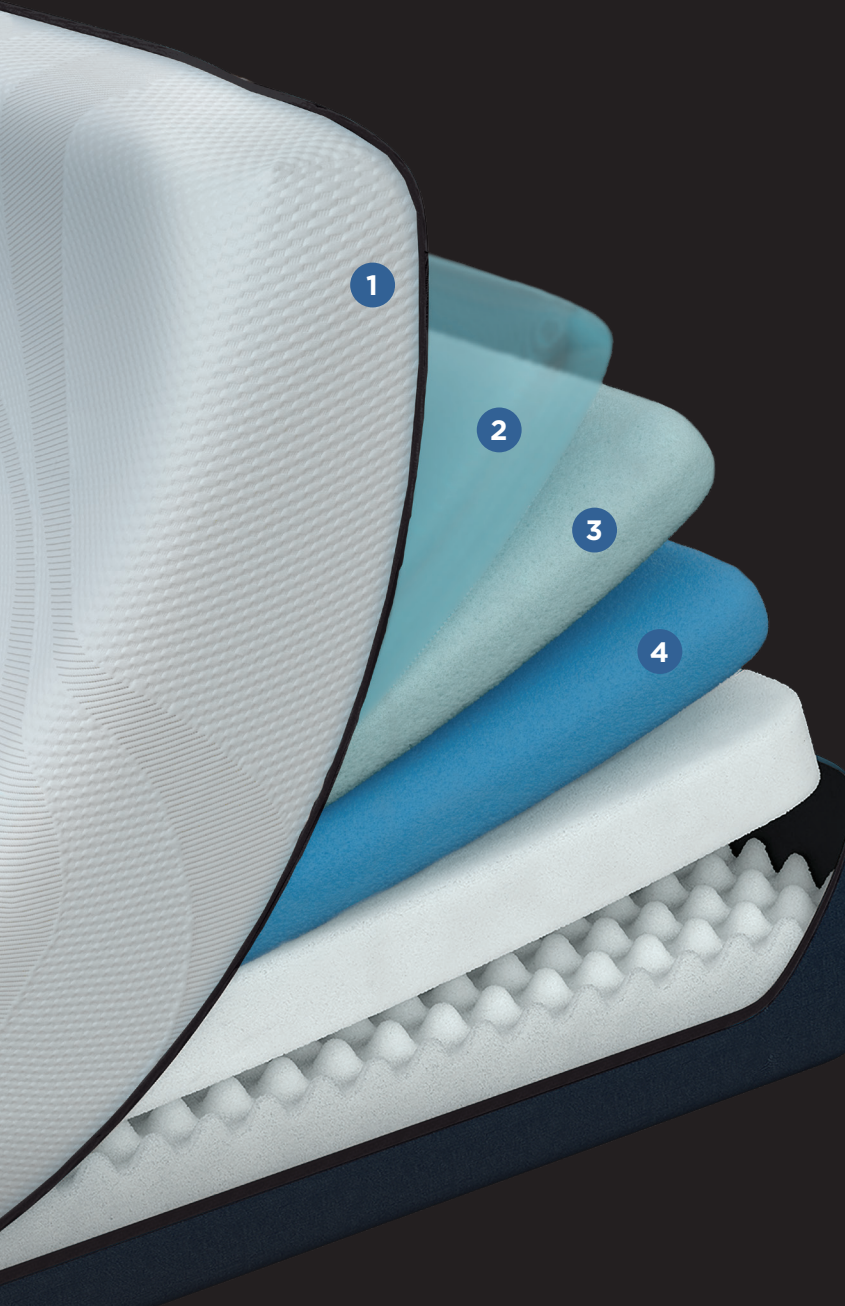


LIFE-CHANGING SLEEP.™





# TEMPUR-LUXEALIGN™



## SOFT • 13" PROFILE

- 1 Easy Refresh Top Cover**  
Premium Knit, Super-Stretch cover with moisture wicking fibres to draw moisture away from the body to help keep sleepers dry and comfortable. Simple to remove, wash and replace.
- 2 Temperature Control beneath the cover**  
Cool-To-The-Touch phase change material just beneath the cover draws heat away from the body to help keep sleepers comfortable during the night.
- 3 TEMPUR-ES® Comfort Layer**  
Advanced adaptability that automatically responds to your body temperature, weight and shape for truly personalized comfort and support.
- 4 TEMPUR-APR+™ Support Layer**  
TEMPUR-APR+ delivers all the pressure relief of original APR with an even tighter, more advanced cell structure and 30% more conforming than TEMPUR-ProAdapt™.

10 YEAR WARRANTY

COMPATIBLE WITH LIFESTYLE BASES



LIFE-CHANGING SLEEP.™