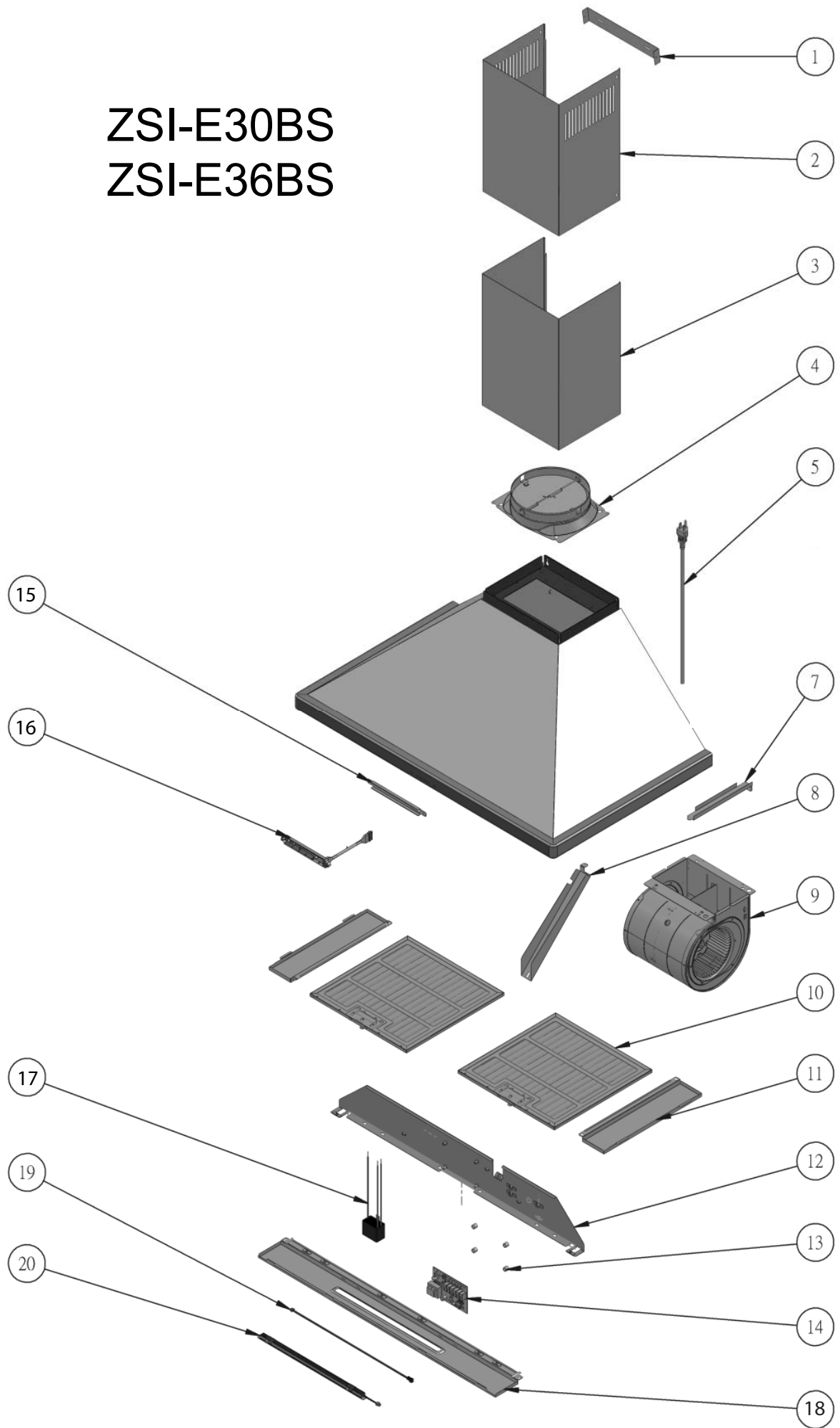


ZSI-E30BS ZSI-E36BS



ZEPHYR

Siena Wall

ZSI-E30BS, ZSI-E36BS

Ref #	Part #	Description	Qty.
1	54110050	Bracket, Duct Cover	1
2	50050145	Duct Cover, Upper	1
3	50050146	Duct Cover, Lower	1
4	54050078	Collar, 8" Round w/Damper	1
5	11030082	Wires, Electrical	1
7	54210011	Cover, Internal Wiring	1
8	54210012	Cover, Internal Wiring	1
9	12120070	Motor	1
10	50200050	Filter, Hybrid Baffle	2
11	50120104	Panel, Side (ZSI-E36BS)	2
12	50140133	Panel, Internal (ZSI-E30BS)	1
12	50140134	Panel, Internal (ZSI-E36BS)	1
13	56240022	Spacer	4
14	11010078	Control Board	1
15	54140154	Bracket, Switch	1
16	11000119	Switch Assembly	1
17	12050028	Capacitor	1
18	50110182	Panel, Light (ZSI-E30BS)	1
18	50110183	Panel, Light (ZSI-E36BS)	1
19	11030114	Wiring, LED Strip	1
20	Z0B0042	LED Light Strip, 9W	1
21	05000102	Hardware Packet	1
21-1	01070006	Screw, M4 x 8mm	2
21-2	01070010	Screw, M4 x 8mm	4
21-3	01070025	Screw, M4 x 38mm	6
22	54060011	Collar, 3 1/4"x10", Rear Ducting	1

AUG20.0301