



Liberty Furniture
INDUSTRIES, INC

LIBERTY FURNITURE

ASSEMBLY INSTRUCTION

ITEM # : 439-BR12FS
: 439-BR89

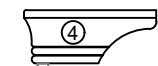
DESCRIPTION : TWIN UPH PANEL FB
: YOUTH PANEL RAILS

Thank you for purchasing this quality product. Be sure to check all packing material carefully for small parts which may have come loose inside the carton during shipment. Identify and count all parts and compare with the parts list below:

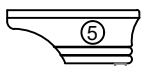
439-BR12FS : Component List		
NO.	Descriptions	Qty.
1	Footboard Storage	1
2	Slats	4
3	Slat Support	4
4	Front Left Leg (Packed Inside Drawer)	1
5	Front Right Leg (Packed Inside Drawer)	1
6	Back Left Leg (Packed Inside Drawer)	1
7	Back Right Leg (Packed Inside Drawer)	1
8	Slat Support Footboard Storage	1

439-BR89 : Component List		
NO.	Descriptions	Qty.
9	Side Rails	2

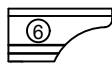
10			
Assembly Hardware Pack			
NO.	Descriptions		Qty.
A	JCBC Bolt M6 x 40mm		8
B	Spring Washer M6		8
C	Flat Washer 1/4		8
D	M4 Allen Key		1
E	Screw 1/4 P/H Rattan 8x1		8
F	M5 Allen Key		1
G	JCBC Bolt M8 X 25MM		8
H	Spring Washer 5/16"		8
I	Flat Washer 5/16"		8



Front Left



Front Right

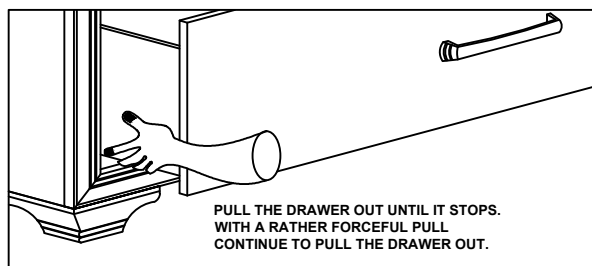


Back Left

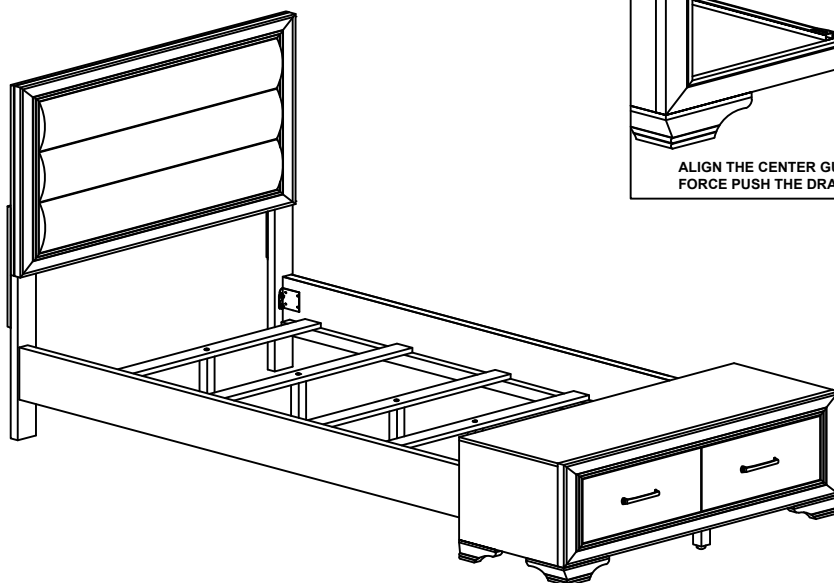
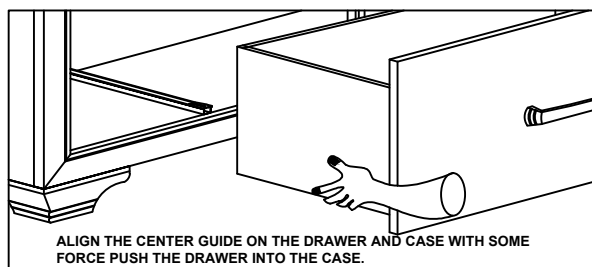


Back Right

TO REMOVE THE DRAWER:



TO INSTALL THE DRAWER:





Liberty Furniture
INDUSTRIES, INC

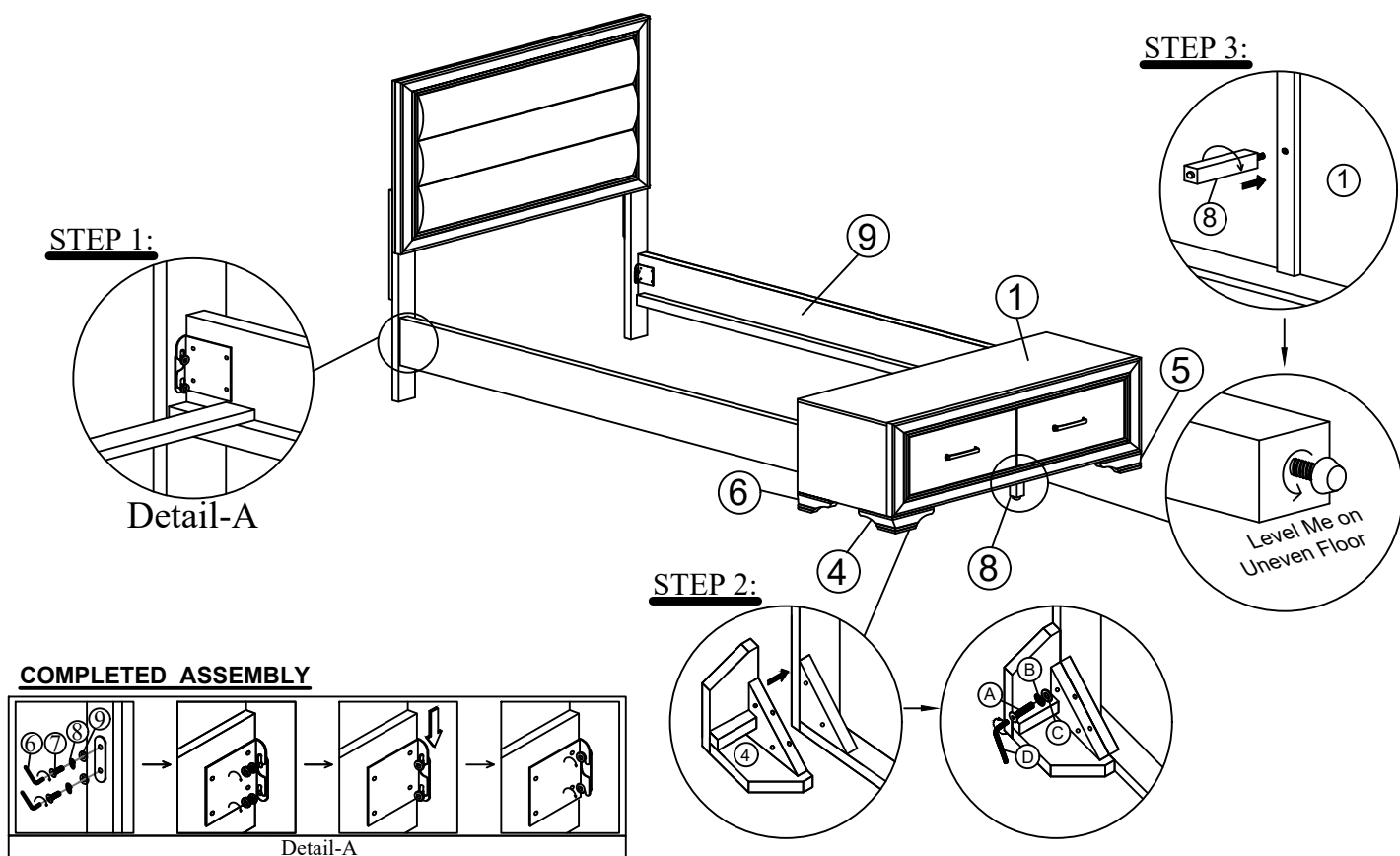
LIBERTY FURNITURE

ASSEMBLY INSTRUCTION

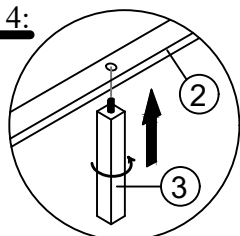
ITEM # : 439-BR12FS
: 439-BR89

DESCRIPTION : TWIN UPH PANEL FB
: YOUTH PANEL RAILS

Thank you for purchasing this quality product. Be sure to check all packing material carefully for small parts which may have come loose inside the carton during shipment. Identify and count all parts and compare with the parts list below:



STEP 4:



STEP 5:

