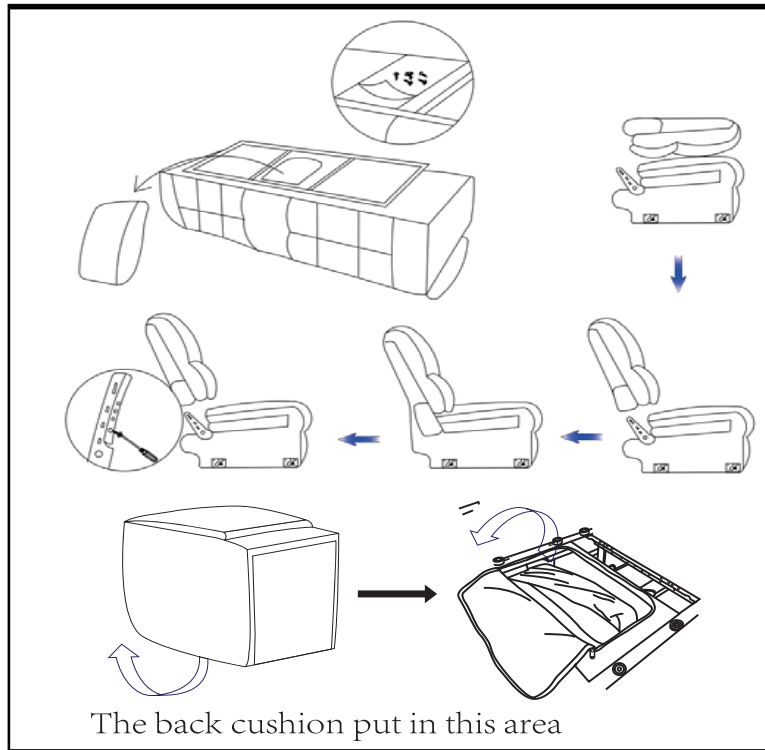


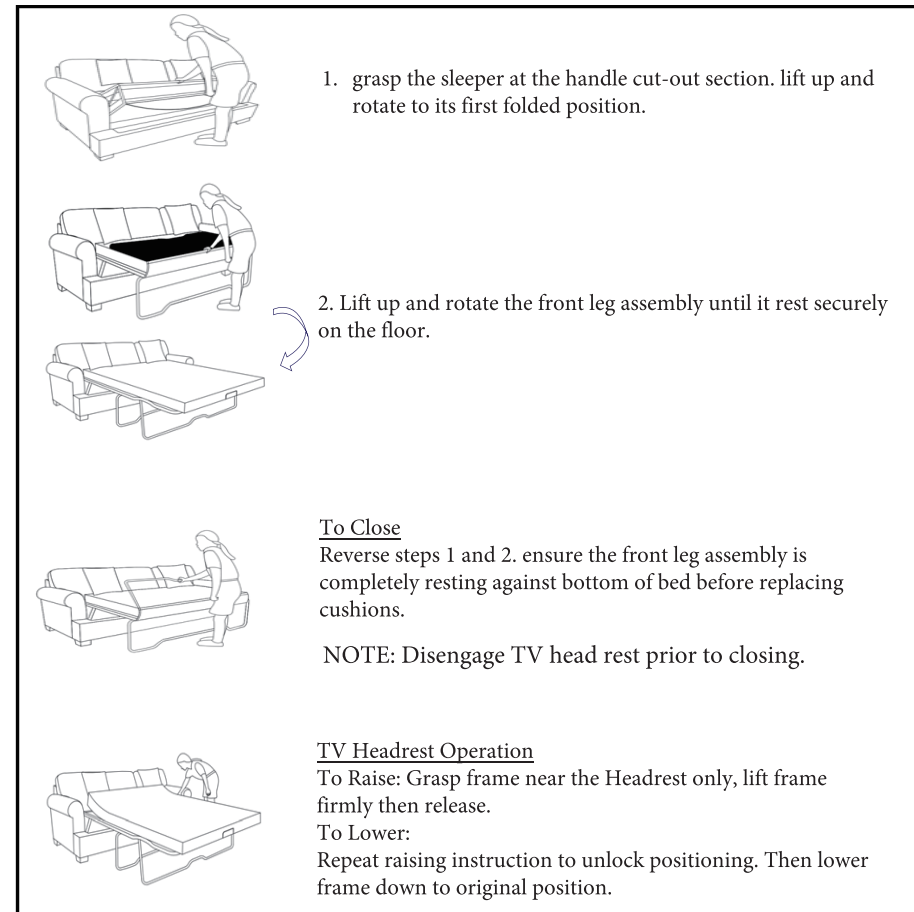
Assembly Instruction U8055 (MADE IN VIETNAM)

Backrest Assemble

1. remove console back from Velcro compartment located on back side of console. Also remove packaging materials from all other cushions/seats.
2. Hold back and back flap with both hands. align the KD brackets together. lower back downward onto base ensuring KD bracket lock together. you will hear a "click" and will not be able to separate the pieces.
3. attach the Velcro back flap by starting in the middle and working outwards, pulling the flap tightly until fully secured to base .



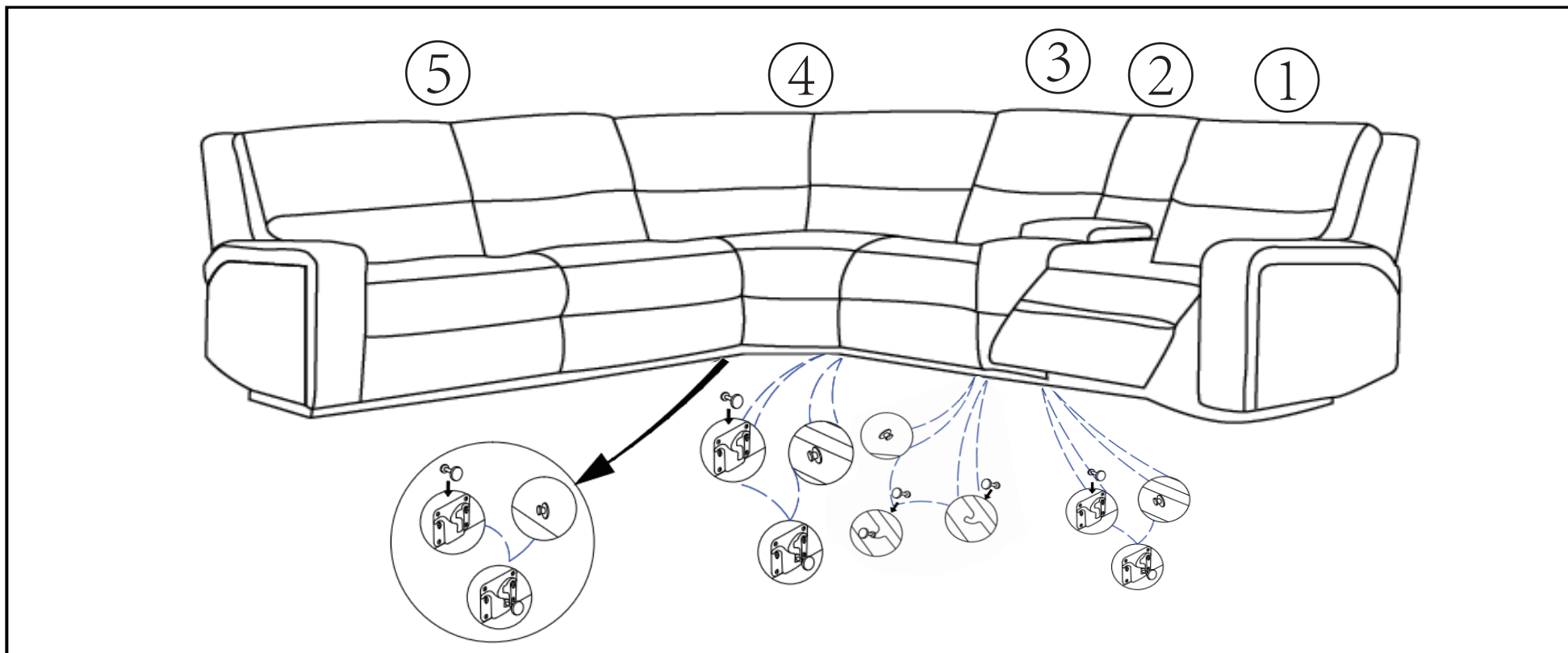
SLEEPER



Your new sleeper mechanism is designed to provide years of reliable service. To help your sleeper last as long as possible, please follow these suggestions.

Do not sit on end of bed Do not fold with linen or pillows on mattress Do not jump on bed





Sectional Assembly:

1. Downward hook slot location: right side of power armless recliner, wedge.
2. Upward hook slot location: left side of wedge, sofa bed.
3. Lift the side which located downward hook, let it slide into the upward hook slot, from ⑤→④→③→②→①
4. The back of ② in the tea table.

