

# ASSEMBLY INSTRUCTION

## MADE IN MALAYSIA

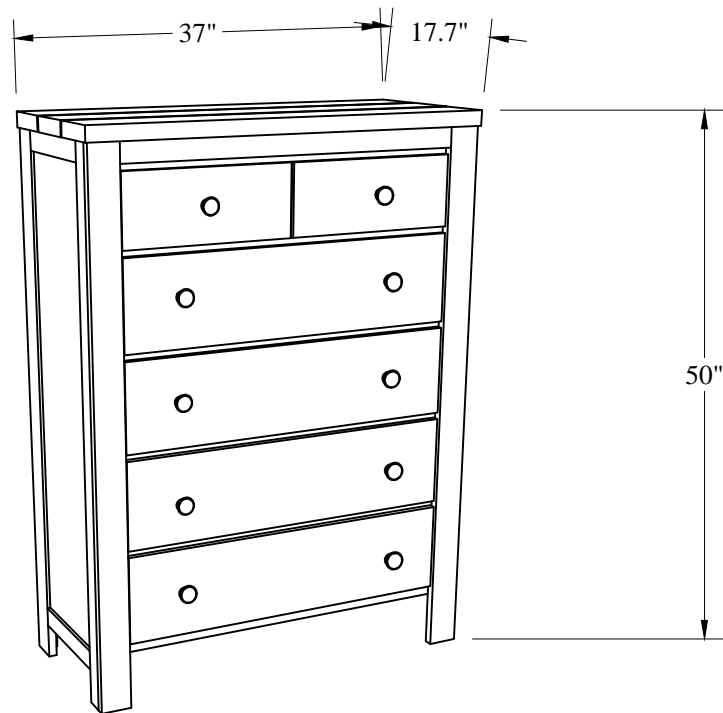
B372-05

Thank you for purchasing this quality product. Be sure to check all packing materials carefully for small parts that may have come loose inside the carton during shipment.

**Before you start assembly :** Please read all instructions carefully before beginning the assembly process. It is recommended that 2 people work together during assembly to prevent personal injury and to ensure that heavy or cumbersome parts are not damaged during the process.

Caution: For your safety, this product requires two people to lift.

### Assembled Dimensions



05 MINUTE

APPROXIMATE ASSEMBLY TIME

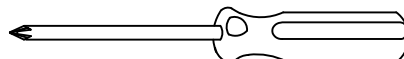


2 PERSONS



REQUIRED ASSEMBLY SPACE

REQUIRED ASSEMBLY TOOLS

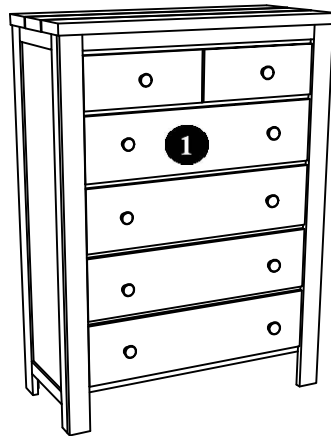


NOT PROVIDED

Need Assistance? Call us at 1-855-343-7378 from 8:00 am to 5:00pm PST Monday - Friday

B372-05

## PART LIST



NO.

(1)

PART LIST

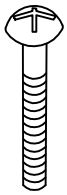
CHEST

QTY

1

## HARDWARE LIST

A



10x

m4x30mm

TRUSS HEAD MACHINE  
SCREW

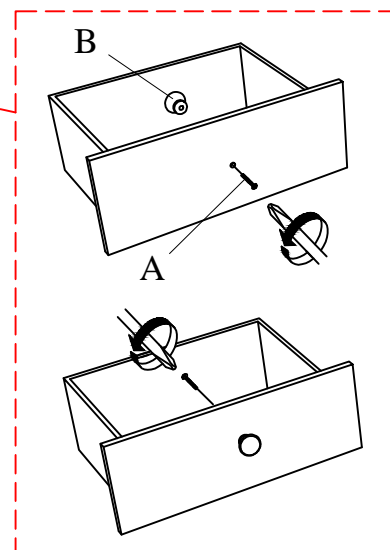
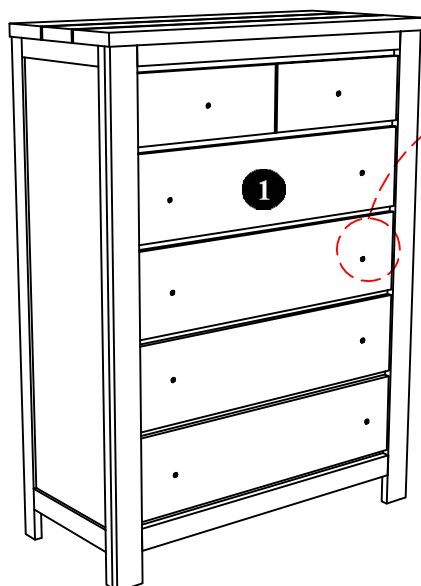
B



10x

D38mmxH24mm

WOOD HANDLE



STEP - A

STEP - B

Need Assistance? Call us at 1-855-343-7378 from 8:00 am to 5:00pm PST Monday - Friday