



User's Manual

Refrigerator-Freezer

WHD-774FW1 WHD-774FSS1 WHD-774FB1

Before using your product, please read this manual carefully and keep it for future reference.



Contents

1.	SAFETY WARNINGS.....	1
2.	INSTALLATION	2
2.1	Location.....	2
2.2	Door Handle Install Illumination	2
2.3	Door Space Requirements.....	3
2.4	Levelling the Unit	3
2.5	Cleaning Before Use	3
2.6	Before Using Your Unit.....	3
2.7	Interior Accessories	4
3.	PRODUCT OVERVIEW	4
4.	OPERATION.....	5
4.1	Duct panel operation	5
5.	CLEANING	5
5.1	Defrosting.....	5
5.2	Cleaning the Interior and the Exterior of the Unit	5
5.3	Cleaning Tips	5
6.	MAINTENANCE	5
6.1	Changing the Internal Light	5
6.2	Care When Handling / Moving Your Unit.....	6
6.3	Servicing	6
6.4	Switching Off for Long Periods of Time.....	6
7.	Trouble shooting	6
7.1	Warm tips:.....	6

1. SAFETY WARNINGS

- 1) **WARNING**—Do not use mechanical devices or other means to accelerate the defrosting process, other than those recommended by the manufacturer.
- 2) **WARNING**—Do not damage the refrigerant circuit.
- 3) **WARNING**—Do not use electrical appliances inside the food storage compartments of the appliance, unless they are of the type recommended by the manufacturer.
- 4) **WARNING**—DANGER: Risk of child entrapment. Before you throw away your old refrigerator or freezer;
 - Take off the doors
 - Leave the shelves in place so that children may not easily climb inside.
- 5) The appliance has to be unplugged after use and before carrying out user maintenance on the appliance.
- 6) This appliance can be used by children aged from 8 years and above and persons with reduce physical sensory or mental capabilities or lack of experience and knowledge if they have been given supervision or instruction concerning use of the appliance in a safe way and understand the hazards involved. Children shall not play with the appliance. Cleaning and user maintenance shall not be made by children without supervision.
- 7) If the supply cord is damaged, it must be replaced by the manufacturer, its service agent or similarly qualified persons in order to avoid a hazard.
- 8) Please abandon the refrigerator according to local regulators for it use flammable blowing gas and refrigerant.
- 9) Please according to local regulations regarding disposal of the appliance for its flammable refrigerant and blowing gas. Before you scrap the appliance, please take off the doors to prevent children trapped.
- 10) This appliance is intended to be used in household and similar applications such as
 - staff kitchen areas in shops, offices and other working environments;
 - farm houses and by clients in hotels, motels and other residential type environments;
 - bed and breakfast type environments;
 - catering and similar non-retail applications.
- 11) Do not use an extension cord with this appliance. If the power cord is too short, have a qualified electrician or service technician install an outlet near the appliance. Use of an extension cord can negatively affect the performance of the unit.



IT IS HAZARDOUS FOR ANYONE OTHER THAN AUTHORISED SERVICE PERSONNEL TO CARRY OUT SERVICING OF REPAIRS WHICH INVOLVE THE REMOVAL OF COVERS.



TO AVOID THE RISK OF AN ELECTRICAL SHOCK DO NOT ATTEMPT REPAIRS YOURSELF.

2. INSTALLATION

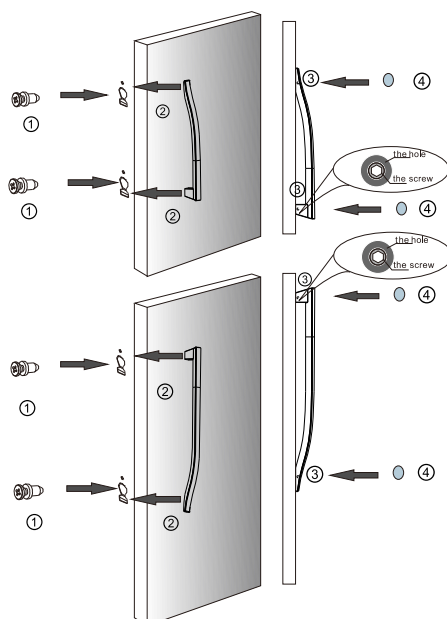
2.1 Location

When selecting a position for your unit you should make sure the floor is flat and firm, and the room is well ventilated. Avoid locating your unit near a heat source, e.g. cooker, boiler or radiator. Also avoid direct sunlight as it may increase the electrical consumption. Extreme cold ambient temperatures may also cause the unit not to perform properly. This unit is not designed for use in a garage or outdoor installation. Do not drape the unit with any covering.

When installing the unit, ensure that 1/8 inch of free space is left at both sides, 1 inch at the rear and 1/8 inch at the top of the unit. This will allow cold air to circulate around the refrigerator and improve the efficiency of the cooling process.

2.2 Door Handle Install Illumination

Note: Figures in the user manual are only for reference. The actual product may differ slightly. The refrigerator must be disconnected from the source of electrical supply before attempting the installation of accessory.



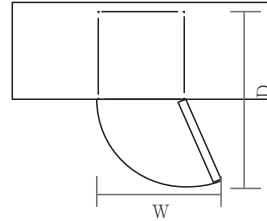
(Pictures and objects are not consistent, in order to prevail in kind)

- ① Take out the two crisscross-screw; and install them into the door holes; turn the screws till to the bottom;
- ② Aim at screws to install the handle;
- ③ The screws in the hole at the side of the handle and turn the screws till them very tight;
- ④ Screw cap should be put on the screw.

2.3 Door Space Requirements

The unit's door must be able to open fully as shown.

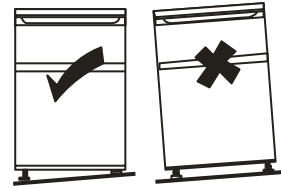
$W \times D \geq 50.8 \text{ inch} \times 58.5 \text{ inch}$



2.4 Levelling the Unit

To do this adjust the two levelling feet at the front of the unit. If the unit is not level, the door and magnetic seal alignments will not be covered properly.

Look down from the top, clockwise and counterclockwise loosening, tightening.



2.5 Cleaning Before Use

Wipe the inside of the unit with a weak solution of bicarbonate soda. Then rinse with warm water using a 'Wrung-out' sponge or cloth. Wash the shelves and salad bin in warm soapy water and dry completely before replacing in the unit. Clean the exterior of the unit with a damp cloth. If you require more information refer to the Cleaning section.

2.6 Before Using Your Unit

The refrigerator adopts 115V/60Hz AC power, voltage fluctuations over the range of 98 ~ 132V will cause malfunction or even damage

Do not damage the power cord under any condition so as to ensure safety use, do not use when the power cord is damaged or the plug is worn.

Do not put flammable, explosive, volatile and highly corrosive items in the refrigerator to prevent damages to the product or fire accidents.

Do not place flammable items near the refrigerator to avoid fires.

This product is household refrigerators and shall be only suitable for the storage of foods. According to national standards, household refrigerators shall not be used for other purposes, such as storage of blood, drugs or biological products.

Do not place items such as bottled or sealed container of fluid such as bottled beers and beverages in the freezer to prevent bursts and other losses.

Before placing any food in your unit, turn it on and wait for 24 hours, to make sure it is working properly and to allow it time to fall to the correct temperature. Your unit should not be overfilled.



◆ Before Plugging in

You must check that you have a socket which is compatible with the plug supplied with the unit.

◆ Before Turning On!


Do not turn on until two hours after moving the unit.

2.7 Interior Accessories

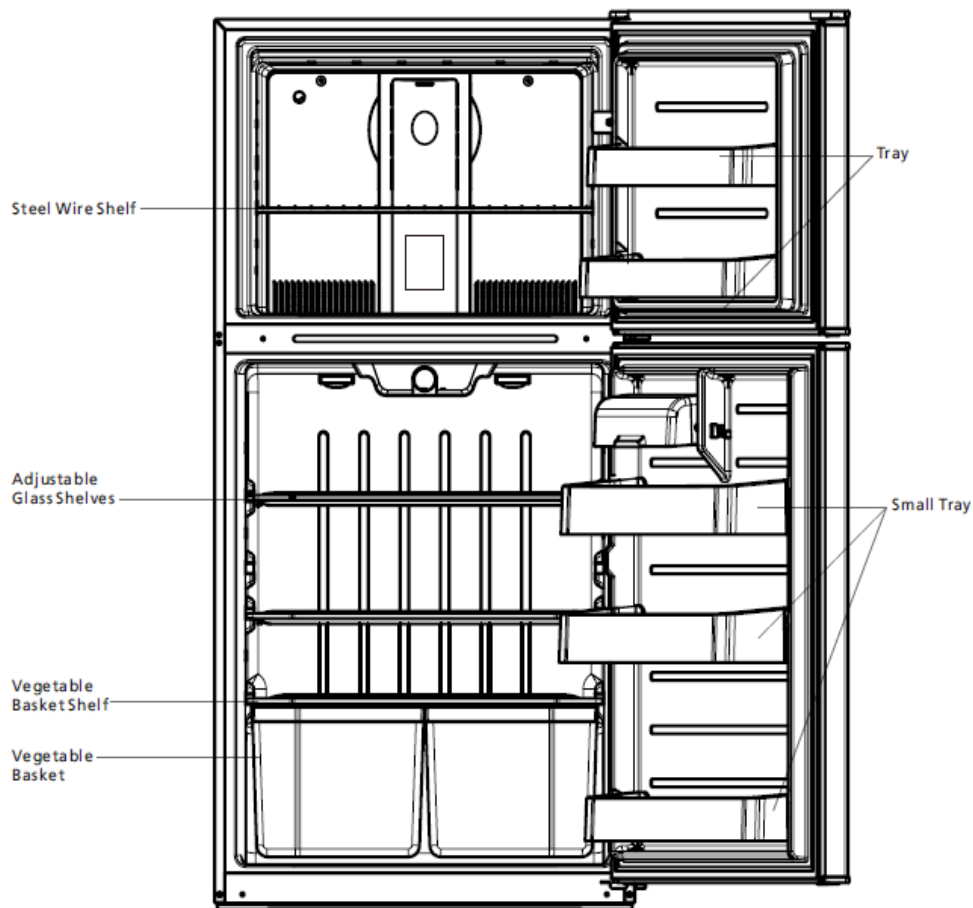
Various glass or plastic storage shelves are included with your appliance - different models have different combinations.

You should always slide one of the full size glass storage shelves into the lowest set of guides, above the fruit and vegetable containers, and keep it in this position. To do this, pull the storage shelf forward until it can be swivelled upwards or downwards and removed.

Please do the same in reverse to insert the shelf at a different height.

 In order to make the full use of the volume of the fresh food storage compartment and frozen-food storage compartment, the user can remove one or more shelves, drawers, out of the appliance, according to your daily use.

3. PRODUCT OVERVIEW



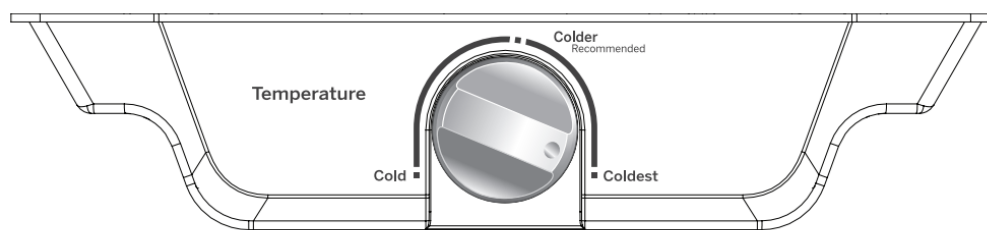
*All images in this instruction manual are for indication only; please refer to your individual unit for details.

4. OPERATION

4.1 Duct panel operation

1. Of the initial position is arranged on the 3 gear, frozen door in COLDER position.
2. Environmental temperature long time less than 10 degrees, cold storage control panel recommended gear placed in the 4 grade or 5 files, frozen door is placed in the COLDEST position.
3. Long time if the ambient temperature is higher than 43 degrees, cold storage control panel recommended gear placed in the 4 grade or 5 files, refrigerated air door can be adjusted in the COLDER to COLDEST region.

Tip: Frozen door located at the COLD position, refrigeration cooling, but long time placed in the COLD position, may cause cold zero.



5. CLEANING

5.1 Defrosting

Auto-defrost for Frost-free Refrigerator

5.2 Cleaning the Interior and the Exterior of the Unit

- ◆ Remove all the shelves and the salad bin. To remove the salad bin first remove the lower door shelf.
- ◆ Wipe the inside of the unit with a weak solution of bicarbonate soda and then rinse with warm water using a “wrung-out” sponge or cloth. Wipe completely dry before replacing the shelves and salad bin.
- ◆ Use a damp cloth to clean the exterior, and then wipe with a standard furniture polish. Make sure that the door is closed to avoid the polish getting on the magnetic door seal or inside the unit.

5.3 Cleaning Tips

Condensation may appear on the outside of the unit. This may be due to a change in room temperature. Wipe off any moisture residue. If the problem continues, please contact a qualified technician for assistance.

6. MAINTENANCE

6.1 Changing the Internal Light

Setting the refrigerator control to off does not remove power to the light circuit.

! CAUTION: Light bulb may be hot.

Illuminating lamp parameter: MAX 40W

- 1) Unplug the refrigerator.
- 2) The bulb is located at the top of the compartment near the opening.
- 3) Replace with an appliance bulb of the same or lower wattage.
- 4) Plug the refrigerator back in.

6.2 Care When Handling / Moving Your Unit

Hold the unit around its sides or base when moving it. Under no circumstances should it be lifted by holding the edges of the top surface.

The refrigerator is arranged at the bottom of the condenser, be careful to keep the bottom dry rub, used in the process of handling process.

Confirm whether there before leveling feet before moving.

6.3 Servicing

The unit should be serviced by an authorized engineer and only genuine spare parts should be used. Under no circumstances should you attempt to repair the unit yourself. Repairs carried out by inexperienced persons may cause injury or serious malfunction. Contact a qualitatively technician.

6.4 Switching Off for Long Periods of Time

When the unit is not in use for a long period of time, disconnect it from the mains supply, empty all food and clean the appliance, leaving the door ajar to prevent from unpleasant smells.

7. Trouble shooting

The following simple issues can be handled by the user. Please call the after-sale service department if the issues are not settled.

Inoperation	Whether the freezer is plugged and connected to power; Low voltage; Failure power or tripping circuit
Odor	Odorous foods should closely wrapped; Whether foods are rotten; Whether the interior shall be cleaned.
Long-term operation of compressor	It is normal that refrigerator operates for longer time in summer when the ambient temperature is higher; Do not put too much food in the freezer at one time; Do not put foods until they are cooled; Frequent opening of refrigerator door.
Illuminating light does not shine	Whether the refrigerator is connected to power, whether the illuminating light is damaged.
The refrigerator door can not be properly closed.	The freezer door is stuck by food packages; Too much food; Tilt refrigerator.
Loud noises	Whether the food is leveled, whether the refrigerator is balanced; Whether the refrigerator parts are properly placed.

7.1 Warm tips:

◆The refrigerator enclosure may emit heat during operation specially in summer, this is caused

by the radiation of the condenser, and it is a normal phenomenon.

◆Condensation: condensation phenomenon will be detected on the exterior surface and door seals of the freezer when the ambient humidity is large, this is a normal phenomenon, and the condensation can be wiped away with a dry towel.

◆Buzz: Buzz will be generated by running compressor specially when starting up or shutting down.

For more information, please contact the local authority or your retailer where you purchased the product.

For more information, please visit our website
www.midea.com



Midea Group All Right Reserved.
CS174I-BP11M