



User's Manual

Refrigerator Freezer

Model: WHD-663FW

Before using your product, please read this manual carefully and keep it for future reference.



Welcome to the World of Simple Handling and No Worries

Thank you for choosing Midea. This manual contains all the information you will need to safely and correctly use your refrigerator. Please read all the instructions prior to using the appliance, and keep this manual in a secure place for future reference. Do not remove from the refrigerator the attached adhesive identification label that contains the code and model number, the manufacturer and other information. This label will be used by the Midea authorized service representative in the event that your refrigerator needs servicing.

Environmental Advice

The packaging material used is recyclable. We recommend that you separate plastic, paper and cardboard and give them to recycling companies. To help preserve the environment, the refrigerant used in this product is R134a (Hydro fluorocarbon or HFC), which does not affect the ozone layer and has little impact on the greenhouse effect. According to Waste Electrical and Electronic Equipment (WEEE) guidelines, waste from electrical and electronic devices should be collected separately. If you need to dispose of this appliance in the future, do NOT throw it away with the rest of your domestic garbage. Instead, please take the appliance to the nearest, available WEEE collection point.



Attention

The refrigerator you have just purchased may be slightly different from the one shown in the drawings in this manual, but its overall design is the same.

Please read the information referring to its operation. This refrigerator is intended for domestic use only. The plug on the refrigerator you have purchased may be different from the one shown in the manual, as the plug that accompanies the product meets your country's electrical specifications.

Table of Contents

1.	SAFETY WARNINGS.....	4
2.	INSTALLATION	5
2.1	Location.....	5
2.2	Door Handle Installation	5
2.3	Door Space Requirements.....	6
2.4	Leveling the Unit	6
2.5	Cleaning Before Use	6
2.6	Before Using Your Unit.....	6
2.7	Interior Accessories.....	6-7
3.	PRODUCT OVERVIEW	7
4.	OPERATION.....	8
4.1	Key.....	8
4.2	Display Screen	8
4.3	Display	8
4.4	Shift Setting	8
4.5	Error Codes.....	8
4.6	The Standby Control Function.....	9
4.7	Duct Panel Operation	9
5.	CLEANING	9
5.1	Defrosting.....	9
5.2	Cleaning the Interior and the Exterior of the Unit	9
5.3	Cleaning Tips	10
6.	MAINTENANCE	10
6.1	Changing the Internal Light.....	10
6.2	Care When Handling / Moving Your Unit.....	10
6.3	Servicing	10
6.4	Switching Off for Long Periods of Time.....	10
7.	TROUBLESHOOTING TIPS	10-11
7.1	Summer Weather Tips	11
8.	ENERGY SAVING TIPS.....	11-12

1. SAFETY WARNINGS



Caution: risk of fire

- 1) **WARNING**—Keep ventilation openings, in the appliance enclosure or in the built-in structure, clear of obstruction.
- 2) **WARNING**—Do not use mechanical devices or other means to accelerate the defrosting process, other than those recommended by the manufacturer.
- 3) **WARNING**—Do not damage the refrigerant circuit.
- 4) **WARNING**—Do not use electrical appliances inside the food storage compartments of the appliance, unless they are of the type recommended by the manufacturer.
- 5) **WARNING**—**DANGER**: Risk of child entrapment. Before you throw away your old refrigerator or freezer:
 - Take off the doors to prevent children from becoming entrapped.
 - Leave the shelves in place so that children may not easily climb inside.
- 6) The appliance has to be unplugged after use and before carrying out user maintenance on the appliance.
- 7) This appliance can be used by children from 8 years and above and persons with reduced physical sensory or mental capabilities or lack of experience and knowledge if they have been given proper instructions about how to use the appliance in a safe way and understand the hazards involved. Children should not play with the appliance. Cleaning and user maintenance should not be made by children without supervision.
- 8) If the supply cord is damaged, it must be replaced by the manufacturer, its service agent or similarly qualified persons in order to avoid a hazard.
- 9) All refrigerators contain refrigerants, which under federal law must be removed prior to product disposal. If you are getting rid of an old refrigerator, check with the company handling the disposal about what to do.
- 10) This appliance is intended to be used in household and similar applications such as the following:
 - Staff kitchen areas in shops, offices and other work environments
 - Farm houses and by clients in hotels, motels and other residential environments
 - Bed and breakfast environments
 - Catering and similar non-retail businesses
- 11) Do not store or use gasoline or other flammable vapors and liquids in the refrigerator or in the vicinity of this or any other appliance.



WE STRONGLY RECOMMEND THAT ALL SERVICES BE PERFORMED BY A QUALIFIED INDIVIDUAL.



TO AVOID THE RISK OF AN ELECTRICAL SHOCK, DO NOT ATTEMPT REPAIRS YOURSELF.

2. INSTALLATION

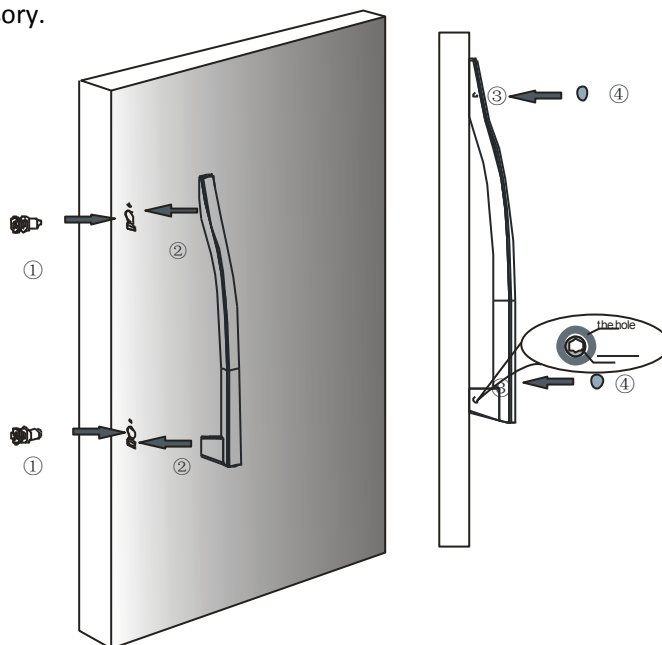
2.1 Location

When selecting a position for your refrigerator, you should make sure the floor is flat and firm, and the room is well ventilated with an average room temperature between 50°F (10°C) and 109.4°F (43°C). Avoid placing your unit near a heat source, e.g. stove, heater or radiator. Also avoid direct sunlight as it may increase the electrical consumption. Extreme cold ambient temperatures may also cause the unit not to perform properly. This unit is not designed for use in a garage or outdoor installation. Do not drape the unit with any covering.

When installing the unit, ensure that 8" (20cm) of free space is left at both sides, 6" (15cm) at the rear and 8" (20cm) at the top of the unit. This will allow cold air to circulate around the refrigerator and improve the efficiency of the cooling process. The door can be opened to the right or the left, depending on what best suits the location. Please ensure there is adequate space for the door to fully open.

2.2 Door Handle Install Illumination

Note: Figures in the user manual are only for reference. The actual product may differ slightly. The refrigerator must be disconnected from the source of electrical supply before attempting the installation of accessory.

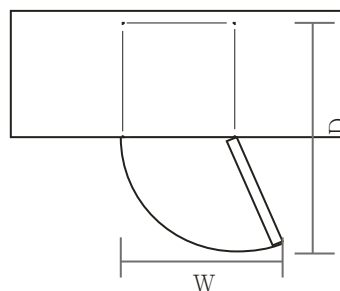


(Pictures and objects are not consistent, in order to prevail in kind)

- ① Take out the two crisscross-screw;and install them into the door holes;
turn the screws till to the bottom;
- ② Aim at screws to install the handle;
- ③ The screws in the hole at the side of the handle and turn the screws till them very tight;
- ④ Screw cap should be put on the screw.

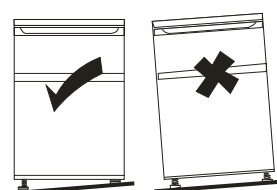
2.3 Door Space Requirements

The refrigerator door must be able to open fully as shown. Make sure that the refrigerator can open at least this wide and this deep – 50.8"W x 58.5"D.



2.4 Leveling the Unit

Adjust the two leveling feet at the front of the unit. If the unit is not level, the door and magnetic seal alignments will not be covered properly.



2.5 Cleaning Before Use

Wipe the inside of the unit with a warm water and baking soda solution (1 tablespoon of baking soda to a quart of water). Then rinse with warm water using a sponge or cloth once you wring the excess moisture out of it. Wash the shelves and vegetable bin in warm soapy water and dry completely before placing it back in the refrigerator. Clean the exterior of the unit with a damp cloth. If you require more information, refer to the cleaning section.

2.6 Before Using Your Unit

Before placing any food in your refrigerator, turn it on and wait for 24 hours, to make sure it is working properly and to allow it to completely cool down. Do not overfill your refrigerator.



- Before Plugging In
You must check that you have a socket which is compatible with the plug supplied with the unit.
- Before Turning On
Do not turn on until two hours after moving the unit. The coolant fluid needs time to settle.

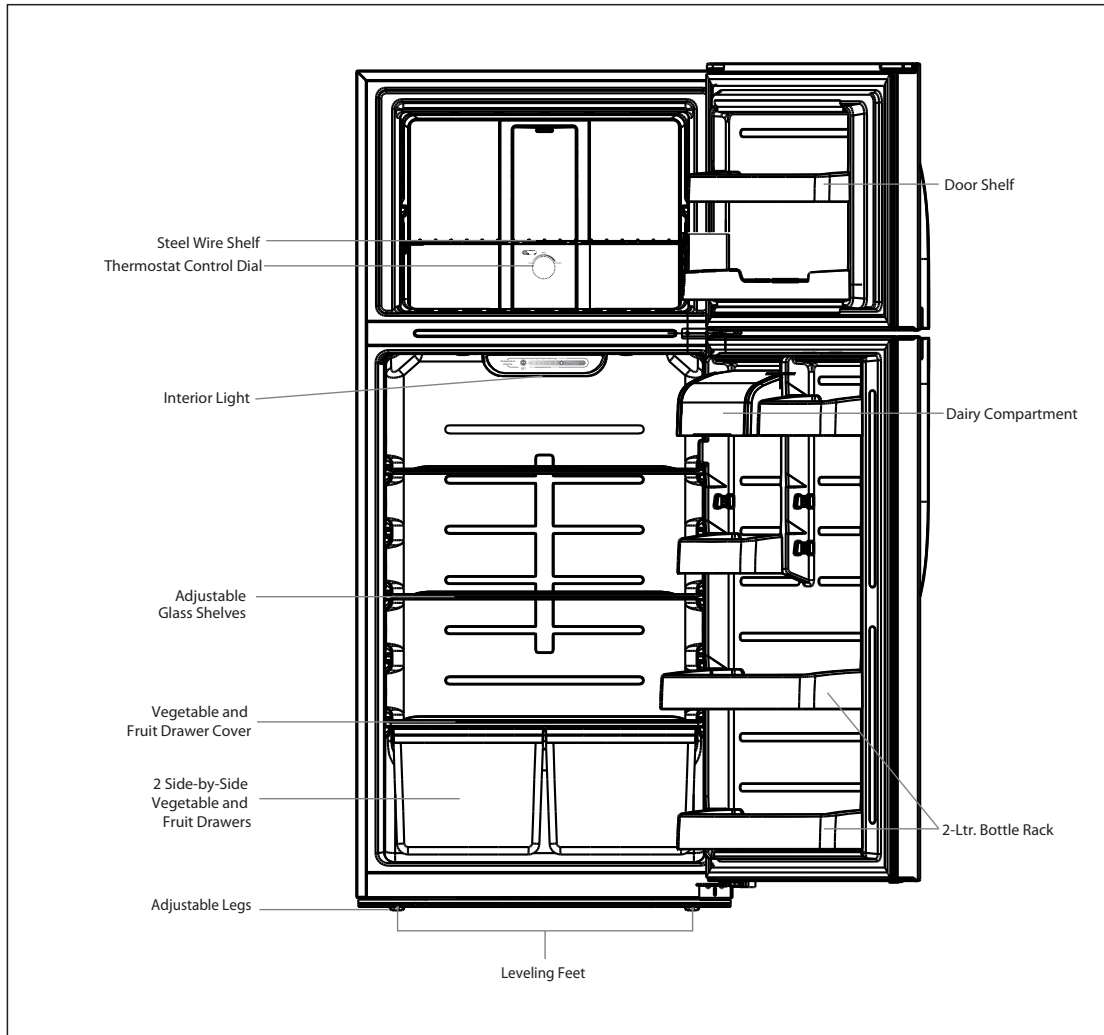
2.7 Interior Accessories

Various glass or plastic storage shelves are included with your appliance - different models have different combinations. Always slide one of the full-size glass storage shelves into the lowest set of guides, above the fruit and vegetable drawers, and keep it in this position. To do this, pull the storage shelf forward until it can be swiveled upward or downward and removed. Do the same in reverse to insert the shelf at a different height.



In order to make the most of the volume of the fresh food storage compartment and frozen-food storage compartment, the user can remove one or more shelves or drawers from the appliance, according to your daily use.

3. PRODUCT OVERVIEW

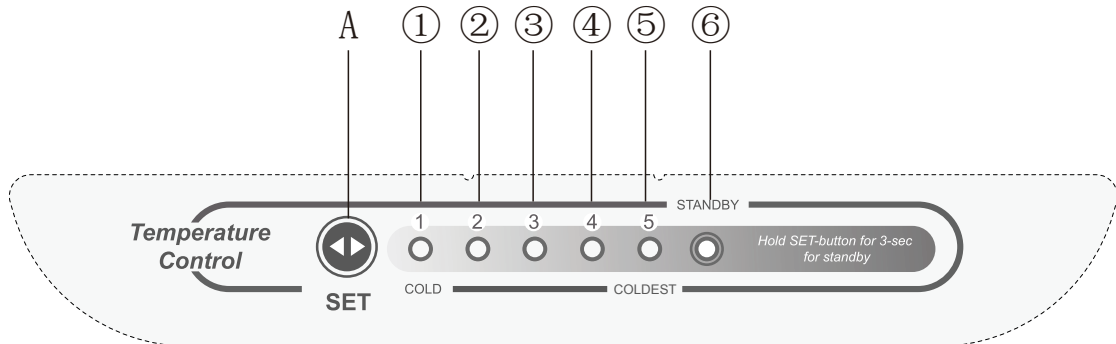


All images in this instruction manual are for placement only. Please refer to your individual unit for details.

4. OPERATION

The operator panel and display layout are referred to in the following figure:

4.1 Key



A. SET position key

4.2 Display Screen

- ① Setting 1
- ② Setting 2
- ③ Setting 3
- ④ Setting 4
- ⑤ Setting 5
- ⑥ Standby Indicator

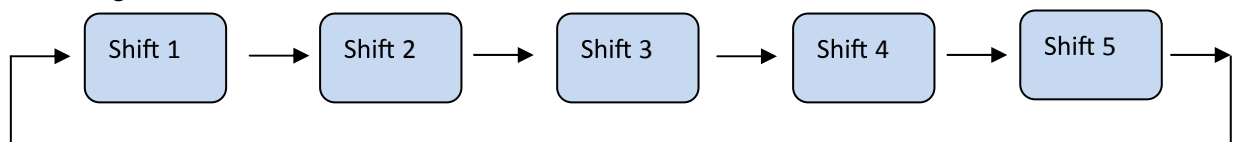
4.3 Display

- Once initially powered on, the display screen (including the key light) is on full display for 3s, and then operates as the displayed middle setting.
- In case of a failure, the appropriate LED light will show in combination with the failure code (in recycling display). If there are no failures, the operation position of the refrigerator will be on normal operation display.

4.4 Shift Setting

Each time the Set key A is pressed once, the setting position changes one time. After the setting has been completed, the refrigerator will operate according to the set value in 5 minutes.

The settings order is:



4.5 Error Codes

Display	Malfunction
LED1 and LED2 lights are on	Refrigerator temperature sensor circuit
LED1 and LED3 lights are on	Freezer defrost sensor
LED1 and LED4 lights are on	Ambient temperature sensor

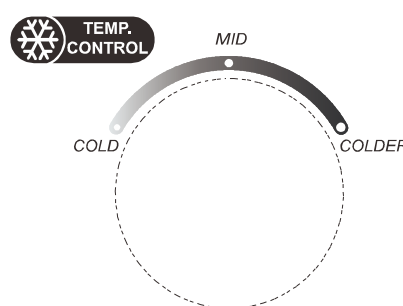
4.6 The Standby Control Function

While the refrigerator is operating, press and hold the SET key for 3 seconds, and the refrigerator will enter standby function mode. The standby indicator will light up, and all settings will stop working.

While the refrigerator is in standby, press the SET key, and the refrigerator will resume normal operation. In addition, since the refrigerator is now operating normally, the standby indicator will turn itself off.

4.7 Duct Panel Operation

1. The initial settings are 3 on the refrigerator control panel and MID on the freezer temperature control dial.
2. If the ambient temperature is less than 10 degrees, the recommended refrigerator control panel setting is 4 or 5 with the freezer temperature control dial at the COLDER position.
3. If the ambient temperature is higher than 43 degrees, the recommended refrigerator control panel setting is 4 or 5 with the freezer temperature control dial at the MID to COLDER position.



TIP: Leaving the freezer temperature control dial on the COLD setting will help keep food cold in the freezer. However, leaving the control dial on the cold setting for an extended period of time may cause items in the refrigerator to freeze.

5. CLEANING

5.1 Defrosting

Auto-defrost for a frost-free refrigerator.

5.2 Cleaning the Interior and the Exterior of the Unit

- Remove all the shelves and the vegetable and fruit drawers. To remove the drawers, first remove the lower door shelf.
- Wipe the inside of the unit with a warm water and baking soda solution and then rinse with warm water using a sponge or cloth once you wring the excess moisture out of it. Wipe completely dry before replacing the shelves and the vegetable and fruit drawers.
- Use a damp cloth to clean the exterior, and then wipe with a kitchen appliance wax or a mild liquid dish detergent. Dry and polish with a clean, soft cloth. Make sure that the door is closed to avoid the kitchen wax getting on the magnetic door seal or inside the unit.
- The grill of the condenser at the back of the unit and the adjacent components can be vacuumed using a soft brush attachment. Before cleaning the condenser, turn the temperature dial to 0. Then sweep or vacuum up the dust.

5.3 Cleaning Tips

Condensation may appear on the outside of the unit. This may be due to a change in room temperature. Wipe off any moisture residue. If the problem continues, please contact a qualified technician for assistance.

6. MAINTENANCE

6.1 Changing the Internal Light

Light must be replaced by a professional.

6.2 Care When Handling / Moving Your Unit

Hold the unit around its sides or base when moving it. Under no circumstances should it be lifted by holding the edges of the top of the refrigerator.

6.3 Servicing

The unit should be serviced by an authorized technician and only genuine spare parts should be used. Under no circumstances should you attempt to repair the unit yourself. Repairs carried out by inexperienced persons may cause injury or serious malfunction. Contact a qualified technician.

6.4 Switching Off for Long Periods of Time

When the unit is not in use for a long period of time, disconnect it from the electrical outlet, empty all food and clean the appliance, leaving the door ajar to prevent unpleasant smells.

7. TROUBLESHOOTING TIPS

Save time and money. Review the chart first, and you may not need to call for service. But if you cannot correct the problem, then call the after-sale service department.

Problem	Possible Causes
Refrigerator does not operate.	The refrigerator is plugged in, but there is low voltage. The fuse is blown or the circuit breaker is tripped.
Refrigerator has an odor.	Foods transmitting odor to the refrigerator.
Motor operates for long periods or cycles on and off frequently.	For the refrigerator to operate for a longer period of time in the summer when temperatures are higher. Do not put too much food in the freezer at one time. Do not put foods in the refrigerator until they are cooled. Frequent door openings.
Light does not come on.	The refrigerator is plugged in, but the light is not on. The light may be damaged.

Problem	Problem Causes
Refrigerator door cannot be properly closed.	There may be too much food in the freezer; or the refrigerator may not be level.
Refrigerator is making loud noises.	The food is not level in the unit. The refrigerator is not balanced. Refrigerator parts are not properly installed.

7.1 Summer Weather Tips

- The refrigerator enclosure may emit heat during operation, especially in the summer. This is caused by the radiation of the condenser. This is normal.
- Moisture: Moisture can form on the cabinet surface between the doors and collect inside in humid weather. This is not unusual. The moisture can be wiped away with a dry towel.
- Buzz: A buzz can be generated by running the compressor, especially when starting up or shutting down.

8. ENERGY SAVING TIPS

Try not to open the door too often, especially when the weather is humid. Once you open the door, close it as soon as possible.

Every now and then check to see if the appliance is sufficiently ventilated (adequate air circulation behind the appliance).

In normal temperature conditions, please arrange the thermostat at the middle setting. Before loading the appliance with packages of fresh food, make sure that the food is cooled to room temperature.

Frost or ice crystals on frozen food increase energy consumption, so clean the appliance as soon as the layer is 0.3-0.5cm thick.

If it is the outer condenser, the rear wall should always be clean and free of dust or any impurities.

Always consider instructions stated in the *Positioning* and *Energy Saving Tips* sections, otherwise the energy consumption might be substantially higher.

- The appliance should be located in the coolest area of the room, away from heat-producing appliances or heating ducts and out of the direct sunlight.
- Let hot foods cool to room temperature before placing them in the refrigerator. Overloading the appliance forces the compressor to run longer. Foods that freeze too slowly may lose quality or spoil.
- Be sure to wrap foods properly, and wipe containers dry before placing them in the appliance. This cuts down on frost buildup inside the appliance.

- The vegetable and fruit drawers should not be lined with aluminum foil, wax paper or paper towels. Liners interfere with cold air circulation, making the refrigerator less efficient.
- Organize and label food to reduce door openings and extended searches. Remove as many items as needed at one time, and close the door as soon as possible.