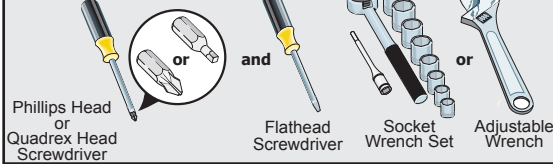


### WARNING

To avoid electric shock, which can cause death or severe personal injury, do not connect your refrigerator to an electrical power source until you have completed Step 3 of these instructions.

#### Tools Necessary:



### NOTE

These installation instructions are provided only as a possible customer option. We recommend you use a service or kitchen contracting professional to install your refrigerator.

## 1 Prepare The Installation Site

Include these minimum guidelines in your site preparation:

- Choose a place near a grounded electrical outlet.
- Do not use an extension cord or an adapter plug.
- Avoid direct sunlight and close proximity to a range, dishwasher or other heat source.
- Floor should be level and able to support a fully loaded refrigerator.

Allow the following clearances for ease of installation, proper air circulation, and plumbing and electrical connections:

Top	3.94 in	100mm
Sides	1.57 in	40 mm
Back	1.18 in	30 mm

### NOTE

Information about cabinetry construction for your new appliance is available for contractors. Call 1-877-435-3287.

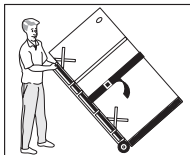
### CAUTION

Room temperatures below 55°F (13°C) or above 110°F (43°C) will impair cooling ability of your refrigerator's compressor.

## 2 Transport Unpackaged Refrigerator To Site

By now, you have already removed your refrigerator's shipping carton. You may still need to use a hand truck to move it through close spaces or entrances. If the refrigerator is larger than an entrance, consider two options:

- Remove the entrance door if one exists.
- Remove the refrigerator doors (see how in your Use & Care Guide).



When using a hand truck:

- Load refrigerator from side of cabinet only.
- Do not run retaining straps over handles.
- Do not overtighten retaining straps.
- Remove tape from doors only after the unit is in place.

### CAUTION

Shifting the refrigerator from side to side may damage flooring.

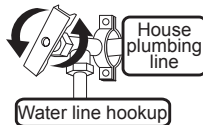
## 3 Water Supply Connection

### NOTE

Automatic ice makers are optional accessories that may be installed in most models at any time. Call your local dealer for information about Ice Maker Kit 117000.

#### What you will need:

- Basic Tools: adjustable wrench, flat-blade screwdriver, and Phillips™ screwdriver
- Access to a household cold water line with water pressure between 30 and 100 psi.
- A water supply line made of ¼ inch (6.4 mm) OD, copper or stainless steel tubing. To determine the length of tubing needed, measure the distance from the ice maker inlet valve at the back of the refrigerator to your cold water pipe. Then add approximately 7 feet (2.1 meters), so the refrigerator can be moved out for cleaning (as shown).
- A shutoff valve to connect the water supply line to your household water system. DO NOT use a self-piercing type shutoff valve.
- Do not re-use compression fitting or use thread seal tape.
- A compression nut and ferrule (sleeve) for connecting a copper water supply line to the ice maker inlet valve.



### CAUTION

To avoid property damage:

- Use a water supply line made of stainless steel tubing or polyline.
- Ensure water supply complies with local plumbing codes.

### NOTE

For homes with existing valves, Frigidaire recommends its Smart Choice® water line kit 5304437642 (with a 6 ft. stainless steel water line), and for homes without an existing valve, Frigidaire recommends its Smart Choice® water line kit 5304493869 (with a 6 ft. polyline water line). Please refer to [www.frigidaire.com/Refrigerator-Accessories](http://www.frigidaire.com/Refrigerator-Accessories) for more information.

### To Connect Water Supply Line To Ice Maker Inlet Valve

1. Disconnect refrigerator from electric power source.
2. Place end of water supply line into sink or bucket. Turn ON water supply and flush supply line until water is clear. Turn OFF water supply at shutoff valve.
3. Remove plastic cap from water valve inlet and discard cap.
4. **If you use copper tubing** - Slide brass compression nut, then ferrule (sleeve) onto water supply line. Push water supply line into water valve inlet as far as it will go (¼ inch / 6.4 mm). Slide ferrule (sleeve) into valve inlet and finger tighten compression nut onto valve. Tighten another half turn with a wrench; DO NOT over tighten. See Figure 1.
5. **If you use braided flexible stainless steel tubing** - The nut is already assembled on the tubing. Slide nut onto valve inlet and finger tighten nut onto valve. Tighten another half turn with a wrench; DO NOT over tighten. See Figure 2.
6. With steel clamp and screw, secure water supply line (copper tubing only) to rear panel of refrigerator as shown.
7. Coil excess water supply line (copper tubing only), about 2½ turns, behind refrigerator as shown and arrange coils so they do not vibrate or wear against any other surface.
8. To turn ice maker on, press the ice maker's On/Off power switch so the LED is steadily illuminated.
9. Turn ON water supply at shutoff valve and tighten any connections that leak.
9. Reconnect refrigerator to electrical power source.

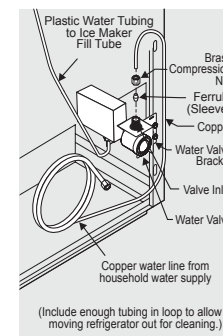


Figure 1

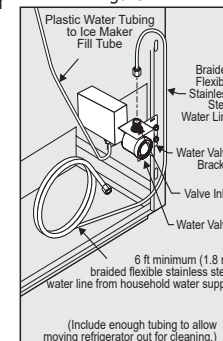


Figure 2

### NOTE

- The ice maker's fill valve may operate noisily if the household water supply is shut off.
- After ensuring no water leaks exist at any connection, be sure to check for leaks again in 24 hours.

## 4 Place In Permanent Position

If possible, use a hand truck to position the refrigerator directly in front of its cabinet enclosure. Be careful not to move the refrigerator beyond its water supply (copper tubing) connections. Plug in the power cord, and push the refrigerator straight back into place.

### CAUTION

- Shifting the refrigerator from side to side may damage flooring.
- Do not block the lower front of your refrigerator. Sufficient air circulation is essential for proper operation.

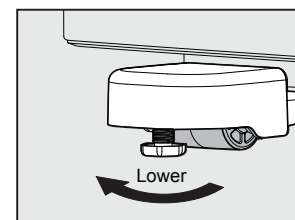
## 5 Level Refrigerator & Adjust Doors (if necessary)

#### Guidelines for final positioning of your refrigerator:

- All 4 corners of the cabinet must rest firmly on the floor.
- The cabinet should be level at the front and rear.
- The sides should tilt ¼ in. (6 mm) from front to back (to ensure that doors close and seal properly).
- Doors should align with each other and be level.

#### Setting the Anti-tip device:

The Anti-tip brackets are located on the lower front corners of the cabinet. Lower the Anti-tip on each side clockwise until they contact the floor. Do not raise the cabinet



Anti-Tip Bracket

### NOTE

Raise the front of the refrigerator enough so the doors close freely when opened halfway. The refrigerator should slope ¼ inch to ½ in. from front to back. Then level the refrigerator from side-to-side.

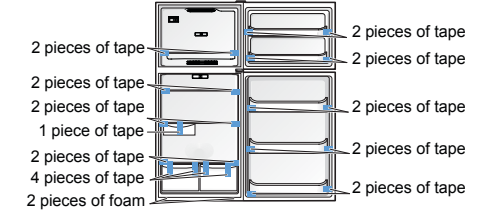
### WARNING



The anti-tip device must be installed according to the instructions in your Use & Care Manual. Failure to do so will result in injury.

## 6 Remove Internal Shipping Materials

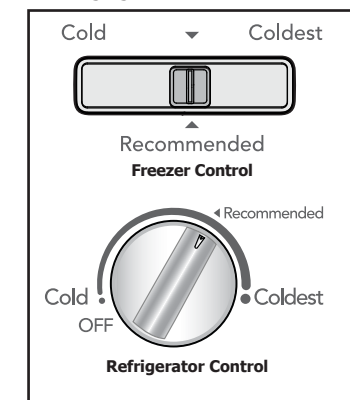
We use packing foam and tape to secure the internal parts of your refrigerator for shipping. Once the refrigerator is in position, you can remove this material.



Location of these materials may vary depending on your model.

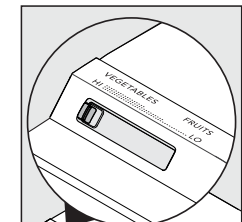
## 7 Controls

When changing controls, wait 24 hours before making additional adjustments.



### NOTE

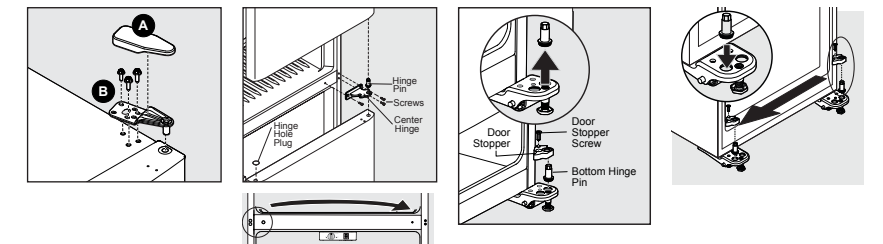
Allow 15 minutes for compressor to start after initial start up or power interruption.



Humidity Control

## 8 Door Removal (if necessary)

If you need to remove the doors to get your refrigerator into the house, please see **DOOR REMOVAL** in your Use & Care Manual.



## 9 Installation Check off List

#### Doors

- Door seals completely to cabinet on all sides
- Freezer door is level across the top

#### Leveling

- Refrigerator is level, side to side and tilted ¼ in. (6mm) front to back
- Cabinet is setting solid on all corners
- Anti-tip bracket set

#### Electrical Power

- House power turned on
- Refrigerator plugged in

#### Ice Maker

- House water supply connected to refrigerator (ice maker installed)
- No water leaks present at all connections - recheck in 24 hours
- Ice Maker is turned ON (ice maker installed)

#### Final Checks

- Shipping material removed
- Fresh Food and Freezer controls set
- Crisper Humidity controls set
- Registration Card sent in



