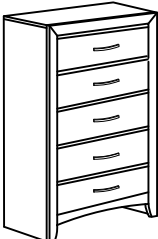


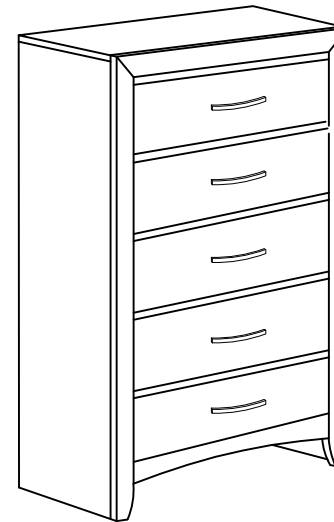
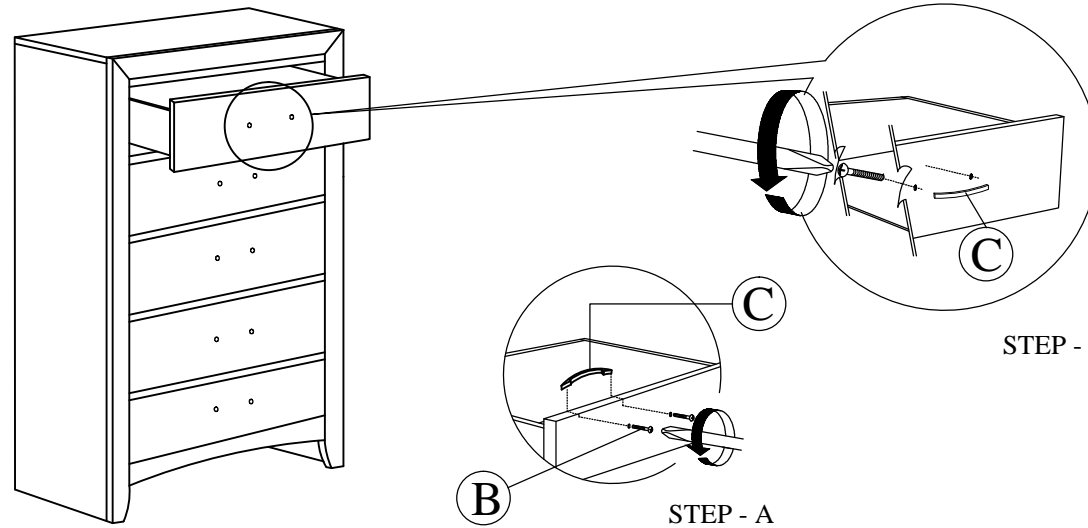


# ASSEMBLY INSTRUCTIONS

| CROWNMARK : 0061A<br>(CHEST) |  |        |
|------------------------------|--|--------|
| NO                           | PART LIST  | QTY    |
| A                            | CHEST<br>             | 1 PC   |
| NO                           | HARDWARE LIST  | QTY    |
| B                            | HANDLE SCREW 28MM<br> | 10 PCS |
| C                            | HANDLE<br>            | 5 PCS  |

**STEP 1 :** Remove HANDLE ( C ) using a Philips head screw driver as shown in illustration STEP - A. Re-install the HANDLE ( C ) as per diagram STEP - B. Repeat STEP - A STEP - B until HANDLE ( C ) are attached correctly.



**COMPLETED ASSEMBLY**

NOTE : MUST TIGHTEN SCREWS **PERIODICALLY** WITH USE SCREW WILL BECOME LOOSE CHECK TIGHTNESS OF ALL SCREW EVERY 6-8 WEEKS.