

THE FOLLOWING **PREVIEW** HAS BEEN APPROVED FOR
ALL AUDIENCES

BY **Paradigm[®]**
THE #1 SPEAKER BRAND*

THESE CINEMA SPEAKERS HAVE BEEN RATED

A++	WARNING
	SOUND MAY BE EVEN BETTER THAN THE MOVIE

FOR MORE INFO, GO TO THE NEXT CLIP ...

* # 1 Best Price/Value by the *Inside Track* Annual Dealer Survey. An annual independent nationwide survey of consumer electronics specialist retailers and custom installers.

Cinema Speakers Deliver Red Carpet Performance!

Cinema CT Systems in home theaters summer 2011 ▼



Cinema 100 CT: 5 x Cinema 100 satellites • 1 x Cinema Sub



Now in Wide Release

Across Cinema, acoustic achievements include lower frequency extension, flat response curves, lower distortion, sustained sensitivity and improved dispersion.

Special Effects

- S-PAL™ satin-anodized pure-aluminum domes
- Wire-mesh tweeter guard; WaveGuide™ technology
- Mineral-filled polypropylene cones
- Additional mineral content stiffens cone composition
- Reference-quality crossovers
- Push-thru binding posts with Easy-Glide™ channels
- Deep articulate bass via the new Cinema Sub

Visual Effects

- New curved profile with industrial high-gloss finish
- Sculpted acoustic-suspension cabinets
- Streamlined stands for bookshelf models (*included*)
- On-wall models feature EasyMount™ system
- Removable self-aligning StayTight™ magnetic grilles

More ▼

Cinema Sub

300 watts Dynamic Peak Power / 100 watts RMS Sustained



PRODUCT CONSUMES LESS
THAN 0.5 WATTS IN STANDBY

Shown:
Cloth side up with
feet attached

Deeper and louder bass than the Cinema satellites can provide with dramatic dynamic range

- 8" high-excursion driver made of a durable reinforced polymer composite that allows the bass cone to travel farther but with effective control during that extended travel
- Dual-ported design for more even and articulate bass response
- Two aesthetic placement options: Gloss Side Up or Cloth Side Up
- 4 feet are included to prevent floor vibrations and resonances from coloring sound during moments of extreme output

Cinema Sub is included with a Cinema CT system, otherwise it is sold separately.



Controls:

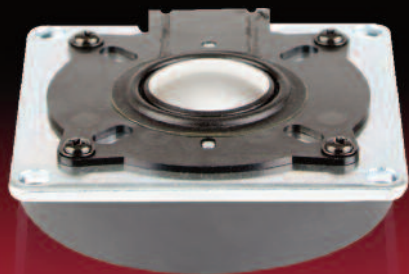
- Auto On / Standby / Soft Clipping
- Subwoofer Cut-Off Frequency
- Sub / Sat Phase Alignment Switch

Inputs:

Two inputs both are Line-Level

Breakout Performance by ...

Best performance for drivers in a shared role! That of supplying a blockbuster music and home theater experience ▼



The Tweeter



The Bass/Midrange Driver

Mounting Systems



Cinema on-wall models feature Paradigm's EasyMount™ system

- Extremely thin bracket takes up very little space on the wall
- Mounting process is simple



Table-top stands included with Cinema 100

- 3-pc. system includes vertical stands and a horizontal stand for the center configuration
- 2-pc. system includes vertical stands

1 Center stand with Cinema 200, Cinema 400 and Cinema Trio (not shown)

- Included with each speaker for use in the horizontal configuration

Cameo Appearances ...

Create a Home Theater System to meet your customers' needs: budget, style and space! ▼



Cinema 200 System:
An 'any flat-panel' complement

- 3 x Cinema 200
- 2 x Cinema 100
- 1 x Cinema Sub



Cinema 400 System:
Ideal for larger flat panel systems.

- 3 x Cinema 400
- 2 x Cinema 100
- 1 x Cinema Sub



Cinema Trio System:
For those who love a soundbar look!

- 1 x Cinema Trio
- 2 x Cinema 100
- 1 x Cinema Sub

Applause for a Standout Supporting Cast



MC-30 Stand

- For Cinema 100 only
 - Aluminum post and polymer base with cast-iron weight
 - Customized polymer bracket head
 - 30" high
 - Black
- (Sold separately)



**Monitor Surround 1
and Monitor Surround 3**

ALL-STAR CAST & technical credits

Cinema 100

DESIGN: 2-driver, 2-way acoustic suspension. stand-mounted/wall-mounted

CROSSOVER: 2nd-order electro-acoustic at 1.8 kHz

HIGH-FREQUENCY DRIVER: 25-mm (1 in) S-PAL™ satin-anodized pure-aluminum dome, ferro-fluid damped and cooled

BASS/MIDRANGE DRIVER: 102-mm (4 in) mineral-filled polypropylene cone, 25-mm (1 in) high-temperature voice coil, advanced motor structures and oversized ferrite magnets

LOW-FREQUENCY EXTENSION: 85 Hz (DIN)

FREQUENCY RESPONSE: *On-axis:* ±2 dB from 125 Hz – 20 kHz;

30° off-axis: ±2 dB from 125 Hz – 15 kHz

SENSITIVITY – ROOM / ANECHOIC: 88 dB / 85 dB

SUITABLE AMPLIFIER POWER RANGE: 15 – 100 watts

MAXIMUM INPUT POWER†: 50 watts

IMPEDANCE: Compatible with 8 ohms

DIMENSIONS (h x w x d): 21.2 cm x 12.2 cm x 15.7 cm;
8-3/8 in x 4-13/16 in x 6-13/16 in

WEIGHT (unpacked): 1.8 kg / 4.0 lb per speaker (with stand)

Cinema 200

DESIGN: 3-driver, 2-way acoustic suspension LCR on-wall with option to sit center speaker on a table or shelf with supports included

CROSSOVER: 2nd-order electro-acoustic at 1.8 kHz

HIGH-FREQUENCY DRIVER: 25-mm (1 in) S-PAL™ satin-anodized pure-aluminum dome, ferro-fluid damped and cooled

BASS/MIDRANGE DRIVER: Two 102-mm (4 in) mineral-filled polypropylene cones, 25-mm (1 in) high-temperature voice coils, advanced motor structures with oversized ferrite magnets

LOW-FREQUENCY EXTENSION: 80 Hz (DIN)

FREQUENCY RESPONSE: *On-axis:* ±2 dB from 120 Hz – 20 kHz;

30° off-axis: ±2 dB from 120 Hz – 15 kHz

SENSITIVITY – ROOM / ANECHOIC: 90 dB / 87 dB

SUITABLE AMPLIFIER POWER RANGE: 15 – 150 watts

MAXIMUM INPUT POWER†: 70 watts

IMPEDANCE: Compatible with 8 ohms

DIMENSIONS (h x w x d): 50.5 cm x 16.1 cm x 10.4 cm;
19-7/8 in x 6-5/16 in x 4-1/16 in

WEIGHT (unpacked): 3.7 kg / 8.3 lb per speaker

Cinema 400

DESIGN: 5-driver, 2-1/2-way acoustic suspension LCR on-wall with option to sit center speaker on a table or shelf with supports included

CROSSOVER: 2nd-order electro-acoustic at 2.1 kHz;
2nd-order electro-acoustic at 500 Hz (bass drivers)

HIGH-FREQUENCY DRIVER: 25-mm (1 in) S-PAL™ satin-anodized pure-aluminum dome, ferro-fluid damped and cooled

BASS/MIDRANGE DRIVER: 102-mm (4 in) mineral-filled polypropylene cone, 25-mm (1 in) high-temperature voice coil, advanced motor structures with oversized ferrite magnets

BASS DRIVER: Two 102-mm (4 in) mineral-filled polypropylene cones, 25-mm (1 in) high-temperature voice coils, advanced motor structures and oversized ferrite magnets

LOW-FREQUENCY EXTENSION: 75 Hz (DIN)

FREQUENCY RESPONSE: *On-axis:* ±2 dB from 115 Hz – 20 kHz;

30° off-axis: ±2 dB from 115 Hz – 15 kHz

SENSITIVITY – ROOM / ANECHOIC: 95 dB / 92 dB

SUITABLE AMPLIFIER POWER RANGE: 15 – 200 watts

MAXIMUM INPUT POWER†: 100 watts

IMPEDANCE: Compatible with 8 ohms

DIMENSIONS (h x w x d): 67.0 cm x 16.1 cm x 10.4 cm;
26-3/8 in x 6-5/16 in x 4-1/16 in

WEIGHT (unpacked): 5.8 kg / 12.8 lb per speaker (with stand)

Cinema Trio

DESIGN: On-wall left speaker & right speaker & center speaker; 7-driver, 3-channel, 2-way acoustic suspension: option to sit speaker on table or shelf with supports included

CROSSOVER: 2nd-order electro-acoustic at 1.8 kHz

HIGH-FREQUENCY DRIVERS: Three 25-mm (1 in) S-PAL™ satin-anodized pure-aluminum dome, ferro-fluid damped and cooled

BASS/MIDRANGE DRIVERS: Four 102-mm (4 in) mineral-filled polypropylene cones, 25-mm (1 in) high-temperature voice coil, advanced motor structures with oversized ferrite magnets

LOW-FREQUENCY EXTENSION: 85 Hz (DIN)

FREQUENCY RESPONSE: *On-axis:* ±2 dB from 125 Hz – 20 kHz;

30° off-axis: ±2 dB from 125 Hz – 15 kHz

SENSITIVITY – ROOM / ANECHOIC: 89 dB / 86 dB

SUITABLE AMPLIFIER POWER RANGE: 15 – 200 watts

MAXIMUM INPUT POWER†: 70 watts

IMPEDANCE: Compatible with 8 ohms

DIMENSIONS (h x w x d): 16.1 cm x 91.5 cm x 10.4 cm,
6-5/16 in x 36 in x 4-1/16 in

WEIGHT (unpacked): 7.6 kg / 16.8 lb



★ Shown: Cinema 400's



Cinema 100



Cinema 200



Cinema 400



Cinema Trio



Cinema Sub

Cinema Sub

DESIGN: Single driver, bass reflex, high-velocity low-turbulence resistive ports, built-in amplifier, flexible positioning: gloss side up or cloth side up with feet
AMPLIFIER: HIGH-CURRENT DISCRETE OUTPUT: 300 watts Dynamic Peak
 100 watts RMS Sustained

AMPLIFIER FEATURES: Auto-on; standby; soft clipping

BASS DRIVER: 210-mm (8 in) high-excursion reinforced co-polymer polypropylene composite cone, 38-mm (1-1/2 in) voice coil

LOW-FREQUENCY EXTENSION*: 32 Hz (DIN)

SUBWOOFER CUT-OFF FREQUENCY: Variable 35 Hz – 150 Hz; bypass option

SUB / SAT PHASE SWITCH: Variable 0° or 180°

LINE-LEVEL INPUT: Two RCA (L/R-Mono) for L/R lineout or Sub-Out/LFE-Out of receiver/processor or other line-level source

LINE-LEVEL INPUT IMPEDANCE: 10k ohms

HEIGHT, WIDTH, DEPTH (*gloss side up, height is with feet*):
 34.2 cm x 32.2 cm x 32.2 cm; 13-7/16 in x 12-11/16 in x 12-11/16 in

WEIGHT (unpacked): 9.7 kg / 21.4 lb



PRODUCT CONSUMES LESS
 THAN 0.5 WATTS IN STANDBY

*DIN 45 500 Indicates -3 dB in a typical listening room.

*With typical program source providing the amplifiers clips no more than 10% of the time.

Paradigm®

Copyright © Paradigm Electronics Inc. All rights reserved. Paradigm reserves the right to change specifications and/or features without notice as design improvements are incorporated



www.paradigm.com