

Smart security
from the
ground up



Jobsite Security Starter Kit, 5-piece

- Connects to existing wifi or can create a 24/7 LTE internet connection¹ (requires a Ring Protect Pro subscription).
- Get notifications when linked Ring cams or lights detect motion.
- Watch over your job site and turn on Ring lights through the Ring app.



Built-in eero Wi-Fi 6 router²



Create a mobile hotspot with
24/7 LTE internet



Built-in security siren



Live motion and video
notifications



1080p HD video and Two-
Way Talk



Customizable Motion Zones

Stay close to your projects from anywhere

Ring Jobsite Security is designed to help contractors prevent on-site crime before it happens. See what's happening live, sound the sirens remotely, or light up dark areas right in the Ring app. The Alarm Pro Base Station connects to the existing wifi or can create a mobile hotspot, generating a wifi network with 24/7 LTE internet connection, requires a Ring Protect Pro subscription.





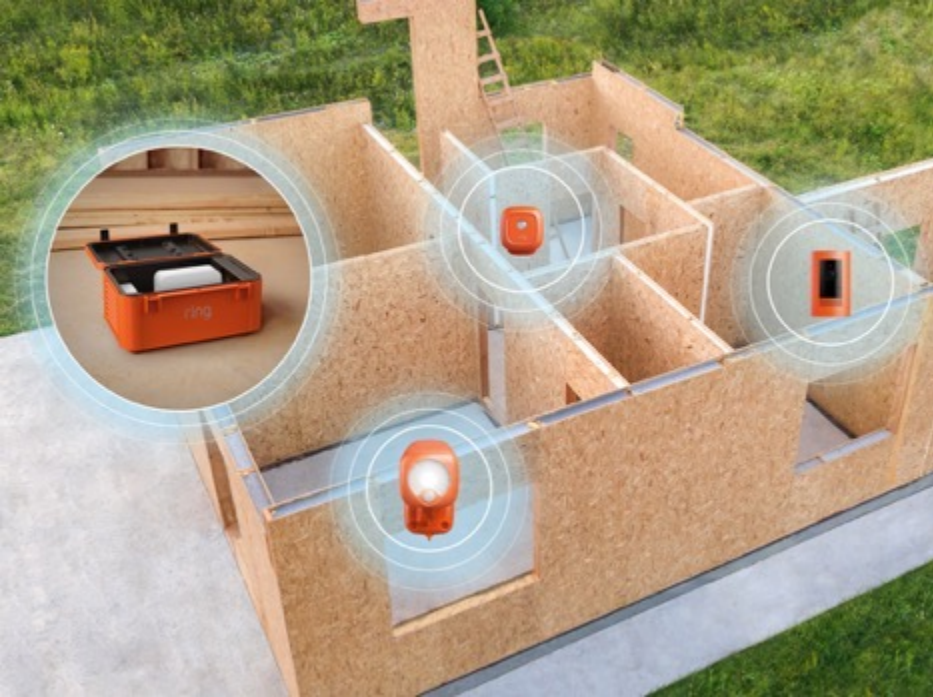
Designed to protect

The Jobsite Security Kit is the complete security system that works together to provide everything a contractor needs to protect the job site. Check in anytime and receive notifications whenever activity is detected on the job site. Easily add more Ring Security Cameras, Video Doorbells, Alarm components, and accessories to expand your protection.

Set up and go

Take the lightweight, durable system from site to site and set it up without any extra tools. Keep your system ready to protect, even if the power goes out with Ring Power Pack (sold separately) – an optional battery pack designed for Ring Jobsite Security. Each Power Pack provides up to 8 hours of power.





Built-in convenience, complete job site security

Ring Jobsite Security is a complete security system for contractors that connects to existing wifi or can create a mobile hotspot, generating a wifi network that has a 24/7 LTE internet connection (requires a Ring Protect Pro subscription). Connects to Ring security cameras, lights, and motion sensors to create an always-on security system, and control it all from the Ring app.

24/7 support and more

Get the most out of your Ring Jobsite Security system with a Ring Protect Pro subscription, a comprehensive subscription service that lets you review, share, and save every video and photo captured by your Ring devices. Starting at \$20/month, per location, get 24/7 LTE-based internet even without an existing internet connection¹, around the clock professional monitoring³, and more so you'll always be able to protect your job site anytime, from anywhere.

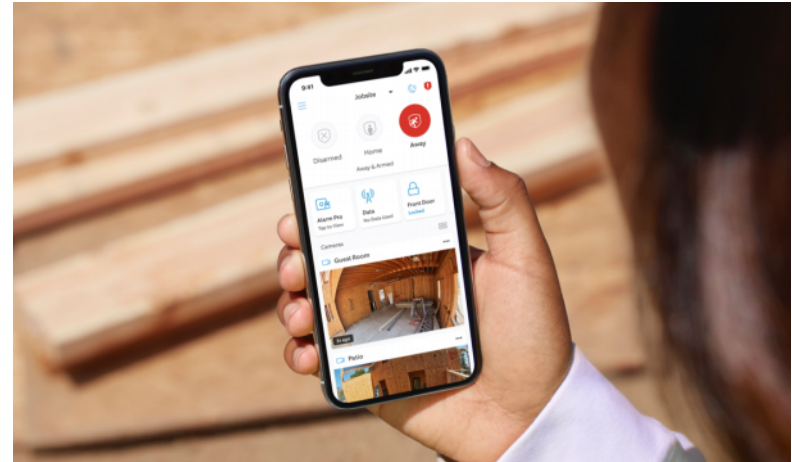


Complete control from the Ring app

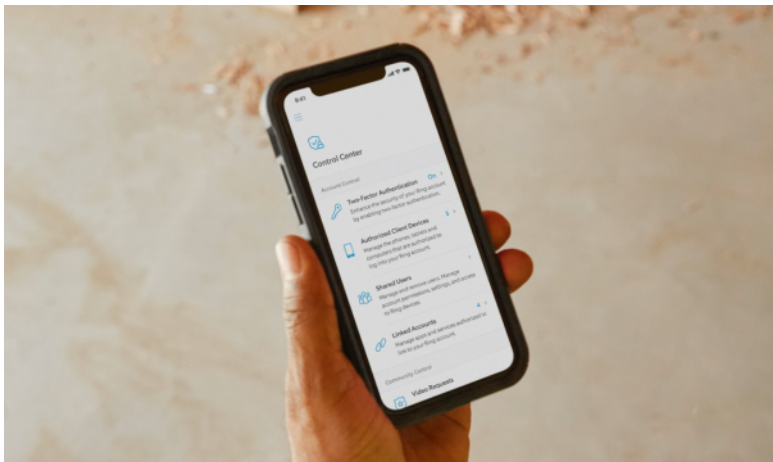
Watch over and control your job site from anywhere. Receive notifications, see what's happening in real-time, remotely activate your lights or security siren, and control all your Ring devices from one simple dashboard in the Ring app.



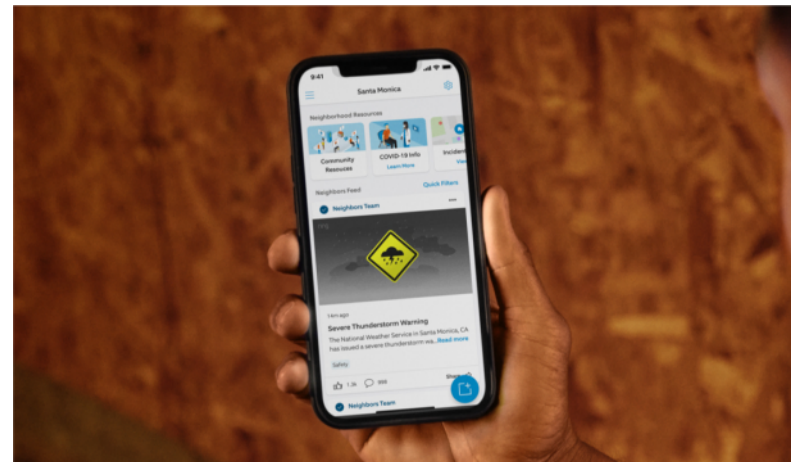
Real-time notifications and Live View



Connected devices



Security and privacy controls



Safety alerts



Simple setup in minutes

Easily set up your Ring Jobsite Security Kit in minutes. Simply plug in the Ring Alarm Pro Base Station, activate your system via the Ring app, and place the camera, light and motion sensor in your desired location. Now you're ready to protect!

Technical Details

Alarm Pro Base Station

Disclaimers

¹ Compatible Ring Protect subscription required (sold separately). Extra data charges may apply. Cellular data is provided by a third party carrier. Coverage, uptime, technology, and speeds will vary. Will require backup power if the power goes out. Visit ring.com/alarm-pro for more details. Ring Alarm Pro is designed to be used as a router, and using your Alarm Pro as an extender will prevent you from accessing many of the Protect Pro subscription features, including 24/7 Backup Internet.

² eero mesh wifi router provides up to 1,500 sq ft of coverage. Adding eero Extenders expands coverage in larger homes. We don't recommend using Ring Alarm Pro as a wifi extender, as it will prevent you from using Ring Protect Pro features. Internet

Coverage

1,500 sq. ft. coverage* (add extra eero 6 extenders for additional coverage)

*eero mesh wifi router provides up to 1500 sq. ft. of coverage. Adding eero extenders expands coverage. Actual range and performance can vary, including due to factors such as interference, device usage, building materials and obstructions and internet connection speed. Coverage estimates are based on normal use conditions, and are a configuration reference, not a performance guarantee. Ring Alarm Pro is designed to be used as your primary router. It must be directly connected to your modem as the Internet gateway. Don't set up Ring Alarm Pro on an existing wifi network.

connection speeds depend on your internet service provider. Maximum wireless signal rates are derived from IEEE standard 802.11 specification. Specifications assume wired ethernet connection, experienced speeds may vary based on network configuration. Coverage estimates are based on normal use conditions. Actual range and performance may vary, including due to factors such as interference, device usage, building materials and obstructions. Throughput and coverage estimates are a configuration reference, not a performance guarantee. Use of eero products and services, including the eero wifi router, requires creation of an eero account and agreement to eero's Terms of Service, found at eero.com/legal. You can review eero's Privacy Notice at eero.com/legal/privacy.

³ Ring Alarm professional monitoring service is available only within the U.S. (all 50 states, but not U.S. territories), and is included with a Ring Protect Pro subscription (sold separately).

⁴ This device's motion detection does not trigger an automated professional monitoring response when enrolled in Alarm professional monitoring. [See Jobsite Security Frequently Asked Questions for details](#). Compatible Alarm sensors (separate purchase) are required for an automated professional monitoring response. If you are using an Alarm or Alarm Pro Base Station without compatible Alarm sensors, use the SOS button in the Ring App to request emergency dispatch. See Ring Alarm licenses at ring.com/licenses.

*Battery life is dependent on device settings, usage, and other factors. Internal battery backup lasts up to 24 hours in Low Power Mode. In Low Power Mode, only some security features, including Alarm Cellular Backup, are available. Battery life is dependent on device settings, usage, environment, and other factors.

Router	Built-in eero Wi-Fi 6 router
Wifi speed	Supports speeds up to 900Mbps* *Internet connection speeds and availability depend on your internet service provider. Maximum wireless signal rates are derived from IEEE 802.11 standard. Specifications assume wired Ethernet connection. Experienced speeds may vary based on network configuration. Coverage estimates are based on normal use conditions. Actual range and performance can vary due to factors such as interference, connected devices, device usage, building materials, and obstructions. Specifications are based on use of a Wi-Fi 6 or later generation client device.

Power	Adapter included 100-240V AC 50/60 Hz. Output: 12V DC - 3A (max)
Radio frequency	Dual-band, 2.4 GHz / 5 GHz radio. Supports at least 75 connected devices
Battery	Internal Rechargeable Lithium Ion Backup Battery
Battery life	Internal battery backup lasts up to 24 hours in Low Power Mode* *In Low Power Mode, only some security features, including Alarm Cellular Backup, are available. Battery life is dependent on device settings, usage, environment, and other factors.
Connectivity	Ethernet, Bluetooth for setup, Z-Wave, WiFi, WiFi-6 capable, LTE, 902-928 MHz Radio
Operating conditions	Indoor use, 32°F to 104°F (0°C to 40°)
Dimensions	6.75 in x 6.75 in x 2.72 in (171.5mm x 171.5mm x 69.1mm)
Siren	104 decibel siren measured at 1 ft.
Color	White
Installation	Place on any flat surface, such as table tops
Setup requirements	Existing internet service or 24/7 Backup Internet (compatible Ring Protect Plan require, sold separately), Smartphone. Ring Alarm Pro is designed to be used as your primary router and must be directly connected to your modem, replacing your existing network.
Warranty and service	Ring Alarm Pro includes 1-year limited warranty and service . Use of Ring Alarm Pro is subject to terms and conditions .
Support	Click here to view more information on the Ring Alarm Pro support page. For monitoring licenses, visit ring.com/licenses .
Ring Protect Plan	By purchasing, you authorize us to charge your default card or another card on file when you attach the subscription. Learn more about subscription features and additional terms and conditions .
Software security	This device receives guaranteed software security updates until at least four years after the device is last available for purchase

	Coverage: 1,500 sq. ft. coverage (add extra eero 6 extenders for additional coverage)
	Radio Frequency: Dual-band, 2.4 GHz / 5 GHz radio. Supports at least 75 connected devices.

updates	as a new unit on our websites. Learn more about these software security updates . If you already own a Ring device, visit Software Security Updates in Ring Control Center for information specific to your device.
Generation	Ring Alarm Pro, Base Station – 1st Gen – 2021 release

Stick Up Cam Battery

Average install time	5-10 minutes
Video	1080p HD, Live View, Night Vision
Field of view	130°diagonal, 110° horizontal, 57° vertical
Audio	Two-way talk with noise cancellation
Motion detection	Advanced Motion Detection with Customizable Motion Zones ⁴
Power source	Quick-Release Battery Pack, optional Solar Panel (sold separately)
Internet requirements	Requires high speed internet
Connectivity	802.11 b/g/n Wi-Fi connection @ 2.4 GHz
Operating conditions	-5°F to 122°F (-20°C to 50°C), weather resistant
Color	Orange
Installation	Integrated mounting base/stand with adjustable angle. Can sit freestanding or mount to a wall.

Dimensions	Without stand: 3.82 in. x 2.36 in. x 2.36 in. (97.0mm x 59.9mm x 59.9 mm)
Box includes	Stick Up Cam Battery, Quick Release Battery Pack, Micro USB Charging Cable, User Manual, Security Sticker, Screws and Wall Anchors.
Warranty and service	1-year limited warranty and service included . Use of Security Cameras is subject to the terms found here . License information can be found here .
Support	View more information on the Security Cameras support page .
Software security updates	This device receives guaranteed software security updates until at least four years after the device is last available for purchase as a new unit on our websites. Learn more about these software security updates . If you already own a Ring device, visit Software Security Updates in Ring Control Center for information specific to your device.
Generation	Ring Stick Up Cam Battery – 3rd Gen – 2019 release

Spotlight Battery

Approximate install time	5-10 minutes
Power type	4 D-cell batteries per Spotlight (sold separately)
Lighting	400 Lumens (adjustable), 3500K color temperature
Motion	Adjustable motion detection ⁴ . Up to 120° field of view. Detection

Operating conditions	4°F to 122°F (-20°C to 50°C), weather resistant (IP66 rating)
Color	Orange
Dimensions	6.42 in x 3.82 in x 4.65 in (163.0 mm x 97.0 cm x 118.1 mm)
Box includes	Ring Spotlight, Installation Tools & Screws, User Manual, Security

detection	angle dependent on distance from unit. 30 ft. detection range.
Approximate battery life	1 year under normal use (8-10 light activations a day, 30 second duration). Battery life is dependent on device settings, usage, and other factors. Brightness may decrease as battery life is depleted.
Connectivity	Wireless connection to Ring Alarm Pro
Auto shut-off time	Adjustable (30s to 2m) via Ring app.

Setup requirements	Sticker One Ring Alarm Pro per jobsite; supports approximately 50 Ring Smart Lighting devices.
Warranty and service	1-year limited warranty . Use of Ring Smart Lighting is subject to the terms found here .
Support	Click here to view more information on the Ring Smart Lighting support page.
Generation	Ring Spotlight Battery – 1st Gen – 2019 release

Motion Sensor

Average install time	5-10 minutes
Power	3 AAA-cell batteries (not included)
Operating conditions	-4°F to 122°F (-20°C to 50°C), weather resistant (IP66 Rating)
Dimensions	2.83 in. x 2.40 in. x 2.32 in. (71.9 mm x 60.9 mm x 58.9 mm)
Color	Orange
Battery life	1 year under normal use (8-10 light activations a day). Battery life is dependent on device settings, usage, and other factors.
Motion detection	Adjustable Motion Detection*. Up to 120° Field of View. Detection angle dependent on distance from unit. 15 ft. range

Installation	Mounts to room corners or flat walls, Ring Alarm Pro required
Connectivity	Wireless connection to Ring Alarm Pro
Setup requirements	One Ring Alarm Pro per jobsite; supports approximately 50 Ring Smart Lighting devices.
Box includes	Ring Motion Sensor, Installation Tools & Screws, User Manual, Security Sticker.
Warranty and service	1-year limited warranty . Use of Ring Smart Lighting is subject to the terms found here .
Support	Click here to view more information on the Ring Smart Lighting support page.
Generation	Ring Outdoor Motion Sensor – 1st Gen – 2019 release

Powered Case

Dimensions	7.52 in. x 10.16 in. x 15.28 in. (191.0mm x 258.0mm x 387.9mm)
Power	120VAC
Battery	Not included
Color	Orange
Operating conditions	-4°F to 122°F (-20°C to 50°C) requires GFCI outlet. Do not place in standing water.

Installation	May be mounted to floor or wall (optional)
Warranty	1 year limited warranty
Generation	Ring Powered Case – 1st Gen – 2022 release



Ring Protect Pro - Ring Alarm

Ring Protect Pro is the first plan in the industry to protect it all - your home and internet connection.

Cost of Service Coverage	\$20/month or \$200/year One Location (all Ring doorbells, cameras, alarm)	Ring Alarm	Ring Alarm Pro with built-in eero Wi-Fi 6 router
Video, History, Saving, and Sharing ¹	Recordings for your Ring Security Cameras or Doorbells at one location are stored up to 180 days so you can watch, share or download them anytime. Video storage defaults to 60 days. ¹	✓	✓
Smart Alerts and Responses	Tailor your Ring App alerts to get fewer interruptions. Unlock Quick Replies and built-in Alexa Greetings on your Video Doorbell Pro or Video Doorbell Pro 2.	✓	✓
24/7 Professional Monitoring ²	Request dispatch of real-time emergency responders when break-ins or any other security threat is detected by your Ring Alarm.	✓	✓
Alarm Cellular Backup ³	If your home loses internet connection, alarm cellular backup keeps your Ring Alarm system connected and able to send alarm signals.	✓	✓
Alexa Guard Plus ⁴	Get hands-free access to an Emergency Helpline, alerts about potential emergencies when you're away, and more, with your compatible Alexa devices.	✓	✓
Extended Warranty ⁵	Extend the warranty on all your Ring devices at one location.	✓	✓
10% off Ring on ring.com and amazon.com ⁶	Get an exclusive discount on Ring products on ring.com or amazon.com when you are logged in.	✓	✓
Save up to \$100 per Year or More on Your Home Insurance ⁸	Ask your home insurance provider about discounts when you enroll in professional monitoring with Ring Alarm, which is included with Protect Pro.	✓	✓
24/7 Backup Internet ³	3GB of data included every month to keep devices on your Wi-Fi network online in the event of an internet outage.		✓
Extra Data for \$3 per GB	Option to use as much data as you need to keep the devices in your home online in the event of an internet outage.		✓
Stay Connected When the Power's Out	Add up to four Ring Power Packs (sold separately) to keep your Ring Alarm Pro powered and online if you lose power. 24/7 Backup Internet requires a Ring Protect Pro subscription.		✓
eero Secure	Help protect your online activity, block ads for faster load times, and apply content filters with eero Secure.		✓
Ring Edge with Local Video Storage ⁷	Your videos and Smart Alerts are processed locally and stored directly on a microSD card in your Ring Alarm Pro (microSD card required)		✓

1. Your Ring videos that are stored in the cloud are stored temporarily, up to 180 days. Changing your video storage time will only affect videos that are recorded after you adjust your storage time setting.
2. Ring Alarm Pro and Ring Alarm professional monitoring service is available only within the U.S. (all 50 states, but not the U.S. territories). Ring does not own its own professional monitoring center. Additional charges may apply in areas that require permits or guard response service for alarm verification. Tax not included. Enrollment required. If you are interested in learning more about Professional Monitoring in Canada visit shop.ring.com/pages/canada-protect-plans.
3. Extra data charges may apply. Backup cellular data is provided by a third party carrier, and availability and speeds will vary. May require backup power if the power goes out. Visit ring.com/alarm-pro for more details. Ring Alarm Pro is designed to be used as a router, as using Ring Alarm Pro as an extender may impact your ability to utilize Ring Protect Pro features.
4. Guard Plus is available only to customers in the US. You must have a supported Echo device to enable Guard Plus. To access Guard Plus benefits, you must link your Ring and Amazon accounts and complete Guard Plus setup in the Alexa app. The Alexa Emergency Helpline is not a 911 service and may not work during outages or if you're experiencing connectivity issues.
5. Extended warranty coverage applies to eligible Ring devices, provided you subscribe to Ring Protect Plus or Ring Protect Pro during the original warranty period, until you discontinue your subscription. Non-Ring and other third-party devices are not eligible for the extended warranty. Visit ring.com/warranty to learn more.
6. Terms and conditions apply. Visit ring.com/protect-plans for more information. Amazon discount requires linking your Ring and Amazon account.
7. To use Ring Edge features, Ring Alarm Pro, a microSD card, and a Ring Protect subscription are required, sold separately. For more information, visit ring.com/alarm-pro.
8. Actual savings vary depending on insurance carrier and policy. Example savings based on example home insurance premium of \$1500 and at least 6.7% discount for alarm professional monitoring.