

# Stealthbox™

## INSTALLATION GUIDE

for the

### SB-F-SUPRDTY/10WØ

(Fits '98-Up Standard, Super Cab & Crew Cab with Front 40/20/40 Split Bench Seat )



This Stealthbox™ is a product which requires professional installation skills and tools. Please read this installation guide thoroughly before beginning the project. It will guide you step by step through the installation. Several of the steps in this process may require two people to accomplish.

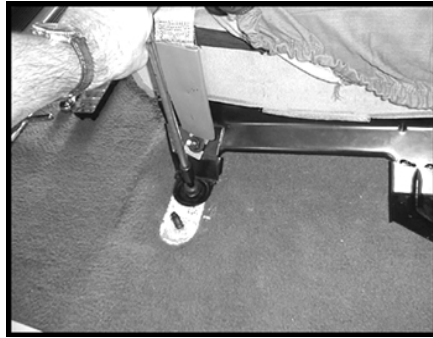
It is absolutely vital that the enclosure be properly mounted to the vehicle according to these instructions. Failure to mount the enclosure properly presents two problems: 1) The sub-bass performance will suffer due to the movement of the enclosure caused by the force exerted by the woofer(s) and 2) A loose enclosure presents a serious safety hazard in the event of a collision or sudden deceleration.

*Please enjoy your JL Audio® Stealthbox™ responsibly.*

**JL AUDIO®**  
*Ahead of the Curve™*

[www.jlaudio.com](http://www.jlaudio.com)

**START  
HERE**

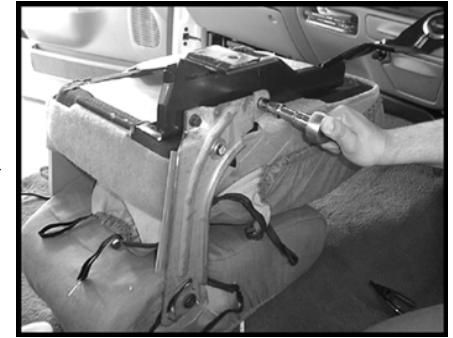


**Step 1:** Remove the 40/20/40 split front bench seat from truck.



**STEP 2:** Remove the side plastic panel from armrest assembly.

**STEP 3:** Remove the floor seat brackets from under the OEM center seat.



**STEP 4:** Remove the center seat from the armrest assembly, by removing the OEM bolts.

**STEP 5:** Once the seat is removed, peel off the OEM center seat upholstery.

The OEM upholstery will be used to recover the Stealthbox™, in later steps.



**STEP 6:** There are two different cushions in the 40/20/40 front bench seat. There are two different instruction procedures for the different style cushions.



This is the **type I cushion**.



Look at the seating plate's bottom right corner. You will see a mounting rod.

On the **type I cushions**, the rod extends past the side of the plate.

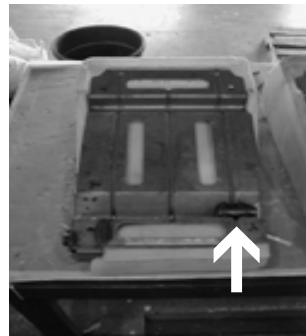


**Continued on Page 2 →**

Cont.  
From  
Page 1  
→



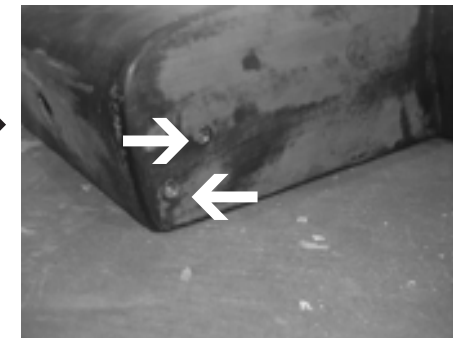
This is the **type 2 cushion**.  
Notice that cushion type 2 has an upside down pyramid shape towards the front.



On the **type 2 cushions**, the rod does not extend past the side of the plate.



**STEP 7:** The driver's side of the Stealthbox™ only has one threaded mounting insert.  
**\*Important\***  
If you are working on a **type 1 cushion**, use the supplied 3/4" spacer. If you are working on a **type 2 cushion**, then use no spacer. The spacers need to mount between the Stealthbox™ and the armrest assembly.



**STEP 8:** The passenger's side of the Stealthbox™ has a pair of threaded inserts. Use the supplied pair of 7/8" spacers.  
The spacers are going to mount between the Stealthbox™ and the armrest assembly.

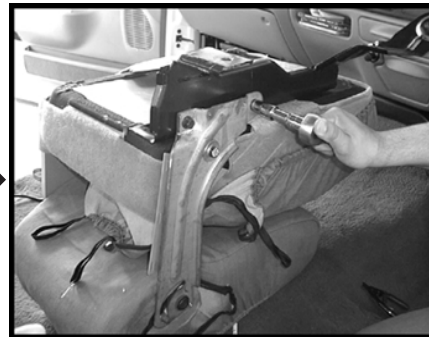


**STEP 9:** Wrap the Stealthbox™ using the OEM uphostry that was removed in **STEP 5**.

To secure the OEM uphostry to the Stealthbox™, use the supplied hook strips, apply one piece to each of the front and rear flaps of the seat cover. The side flaps do not need the strips.

Attach the loop strips to the Stealthbox™.

Make sure that hook and loops strips are lined up with each other. If they are not lined up properly, the OEM uphostry will not be secure to the Stealthbox™.



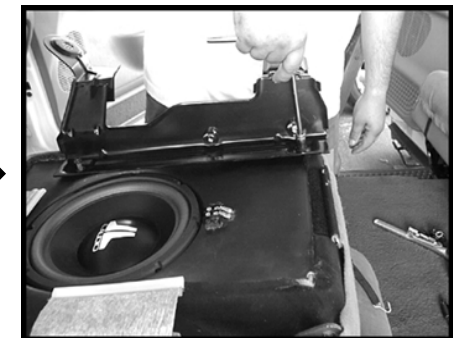
**STEP 10:** With the OEM uphostry applied. Using the supplied 3/8" hex head bolts, mount the armrest assembly to the Stealthbox™.

**\*IMPORTANT\***

Make sure that you are using the correct supplied spacers on the correct side of the Stealthbox™. The supplied bolts are to be mounted through the spacers.



**STEP 11:** Attach the OEM floor seat brackets to the Stealthbox™ using the factory bolts, that were removed in **STEP 3**.



Be sure that the side OEM uphostry flaps are tucked between the seat bracket and the Stealthbox™.

**STEPS 9 & 10**, require some patience. The spacers and brackets must be aligned with each other in addition to the aligning the bolt holes.



Continued on Page 3 →

**JL AUDIO**  
Ahead of the Curve™

www.jlaudio.com

SB-F-SUPDTY/10WØ, JL AUDIO, Inc 2003

Page 2

Sheet SKU#011110 Revision 11/05/03

Cont.  
From  
Page 3



**STEP 12:** Run and attach speaker wire to the Stealthbox™. Double check the woofer for proper function.



**STEP 13:** Bolt the 40/20/40 split front bench seat back into the truck using the OEM bolts, from **STEP 1**.



**CONGRATULATIONS!  
INSTALL COMPLETE.**

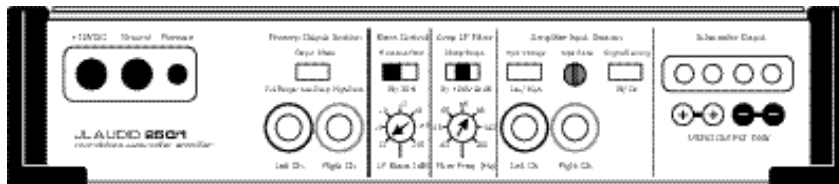
**Included Hardware:**

- (3) 3/8"-16x1x1/2" hex head bolts
- (3) 3/8" split lock washer
- (2) 3/4"x7/8"(L)x3/8" alum spacer
- (1) 3/4"x3/4"(L)x3/8" alum spacer
- (2) backing loop
- (2) backing hook

**Specifications:**

- Enclosure Type:** Acoustic Suspension (Sealed)
- Driver Type:** One JL AUDIO® 10WØ Subwoofer
- Nominal Impedance:** 4Ω
- Cont. Power Handling:** 125 Watts

JL Audio recommends using a high quality amplifier such as the JL Audio® 250/1. The diagram below shows the recommended crossover; infrasonic filter and equalizer settings for the 250/1 when being used to power the the Audio Stealthbox™.



The JL Audio 250/1 is a very versatile audio component. Please consult the owner's manual for detailed information about installing and tuning this amplifier.

**Mid/High Frequency Driver Information:**

**Front Location Driver Size:**  
5"x7"

**Applicable JL Audio® Products:**  
TR570-CXi, XR570-CSi or CXi



**Rear Location Driver Size:**  
5"x7"

**Applicable JL Audio® Products:**  
TR570-CXi, XR570-CXi

