

8-Button Network Control Panel

AT-ANC-108D Installation Guide



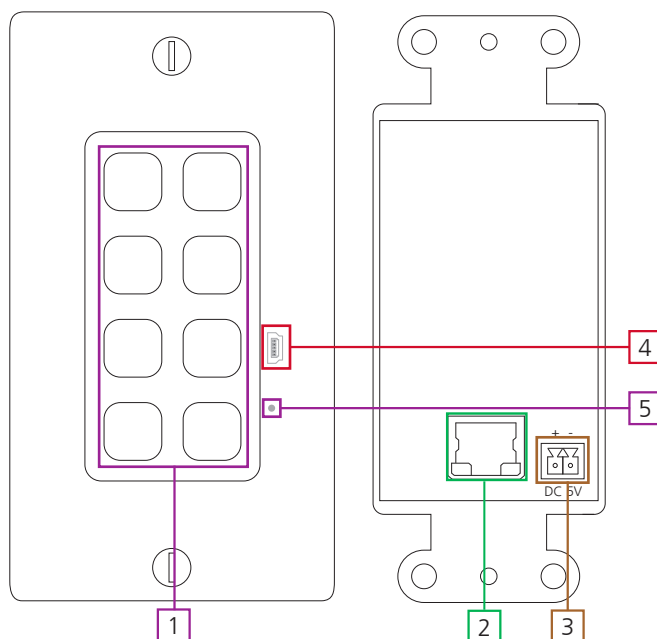
Please check <http://www.atlona.com/product/AT-ANC-108D> for the most recent **firmware update** or **manual**.

The Atlona AT-ANC-108D is an 8-button network control panel for Atlona IP-based switchers. It is designed for easy configuration using the free Atlona Management System (AMS) software resource. Only one category cable needs to be connected to the AT-ANC-108D ensuring fast, hassle-free installation of control signal and power. Configuration is also fast. Simply download a configuration file from within AMS for Atlona single output switchers such as the HDVS Series, SW-5 Series, AT-UHD-CLSO-601, or AT-UHD-CLSO-612ED. Combined with Atlona IP-controllable switching products for huddle spaces, classrooms and conference rooms, the network control panel acts as a remote control to send IP commands to the switcher. The switcher in turns acts on those commands or translates the IP commands into RS-232 commands to control external devices such as displays to create a seamless AV system. The AT-ANC-108D fits into a US 1-gang junction box and is compatible with Decora-style wall plates.

Package Content

- 1 x Unit
- 1 x Installation guide
- 1 x Decora face plate
- 1 x Blank button template
- 1 x Predefined button template

Panel Descriptions



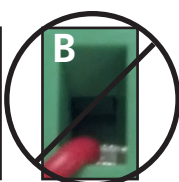
1. Buttons - Preprogrammed buttons to control connected Atlona device
2. LAN port - Connect network switch or router for device control
Note: Connect a PoE switch or injector to provide power to the unit without the need for a 5V power supply
3. DC 5V - Connect optional 5V power supply to this port (purchasable at atlona.com)
4. Mini USB - Used for manually updating, if needed
5. Reset button - Used to reset the unit, in case of lock ups or loss of signal.

Captive Screw

The captive screw connectors allow you to cut cables to a suitable length, reducing cable clutter while providing a more reliable connection.

Connecting

When connecting the cables to the female captive screw connector it is important that the wires be terminated correctly. The female captive screw connector has a contact plate at the top and must have the wires touching it for signal to pass. When wired correctly (see picture A) the signal will pass, incorrectly (see picture B) no signal will pass.



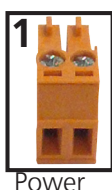
The captive screw connectors have a contact bar that is adjusted to compress the wire against the top contact plate. Use the screws at the top of the connector to compress the wire against the contact plate.



Turn the screws clockwise to raise the contact bar to the upper contact plate and hold the wires in place.



Turn the screws counter clockwise to lower the contact bar to release the wires.



Power

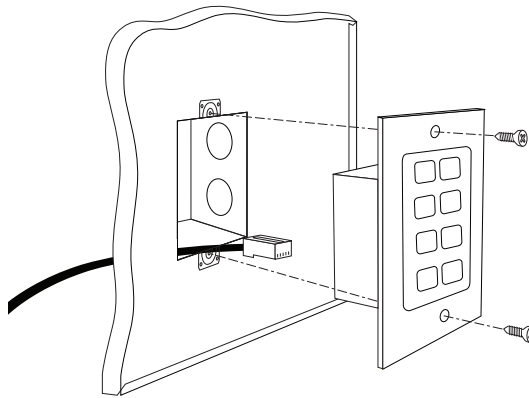
A female captive screw power connector is included with the optional power supply (see picture 1)



Black: - White: +

The power cable (picture 2) will have exposed wires. Each wire is encased in a different colored cover.

Mounting



The ANC-108D is a 1-gang wall plate. To install the unit, simply connect the Ethernet cable to the unit, place the unit in the back box, and use the two wall plate screws to secure the unit to the box.

Ethernet

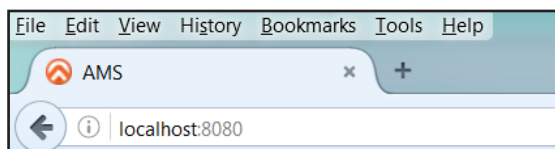
For convenience, the ANC-108D comes with DHCP on. This enables the switcher to be connected to a network without knowing available IP addresses.

AMS

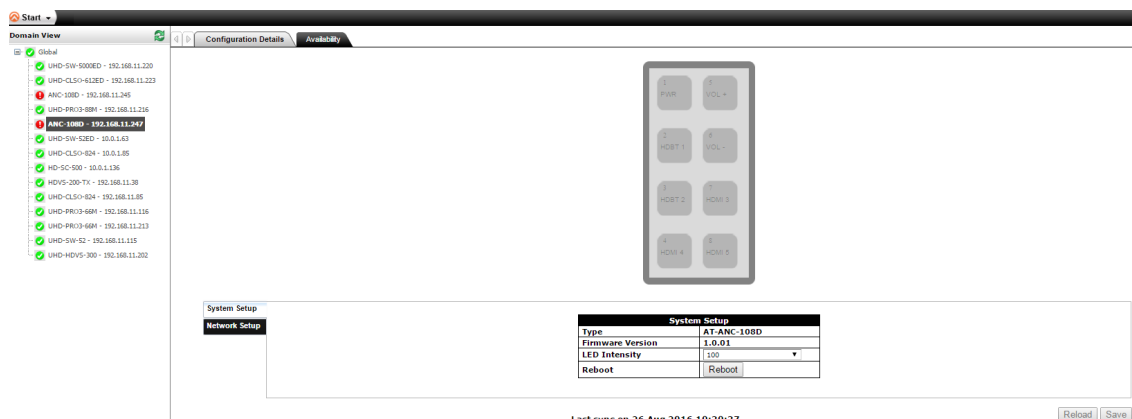
For simple and complete control, the ANC-108D is supported by the AMS. Follow the AMS installation and discovery instructions found within the AMS manual.

To download AMS, go to <http://atlona.com/product/at-sw-ams/>

To get to the log in screen of AMS: type localhost:8080 into the web browser on the computer AMS is running on. It will go straight to the log in for AMS.



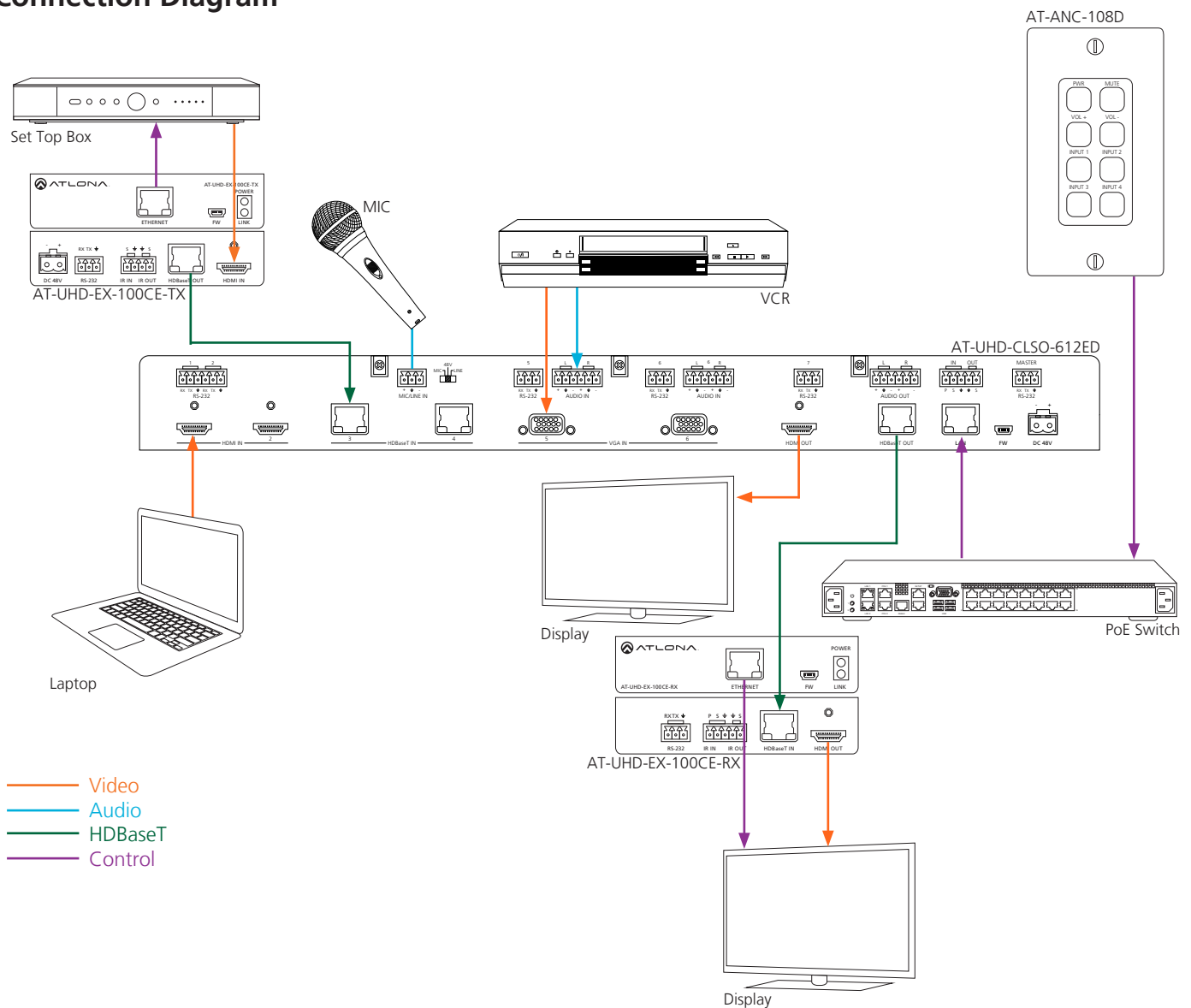
A login screen will appear (this is the same log in for admin and general users). For the first log in the username is "admin" and password is "admin123".



Once the installation and discovery are finished (see AMS manual for instructions), the device will be found within the Domain View. Select the ANC-108D from the devices to control and view the device GUI. (Device is highlighted in the picture above)

Note: For full configuration instructions, the manual can be found at <http://www.atlona.com/product/AT-ANC-108D>

Connection Diagram



Troubleshooting

1. Why am I receiving no power when I connect my 108D to a network switch?

The 108D requires a PoE connection. Check to make sure the switch is PoE capable or connect a PoE injector to provide power to the unit.

2. Why is a red X showing up on my 108D in AMS?

When the 108D is linked to another product it may temporarily lose connection. Manually ping the device within AMS or wait 1 or 2 minutes for AMS to automatically ping the 108D

3. Why is my device not connecting with the AMS?

The 108D may have locked up. Manually reset the unit, by removing the Decora wallplate and pressing the small reset button below the mini USB port.