



OWNER'S MANUAL

# Portable Bluetooth Speaker

---

Please read this manual carefully before operating your set and retain it for future reference.

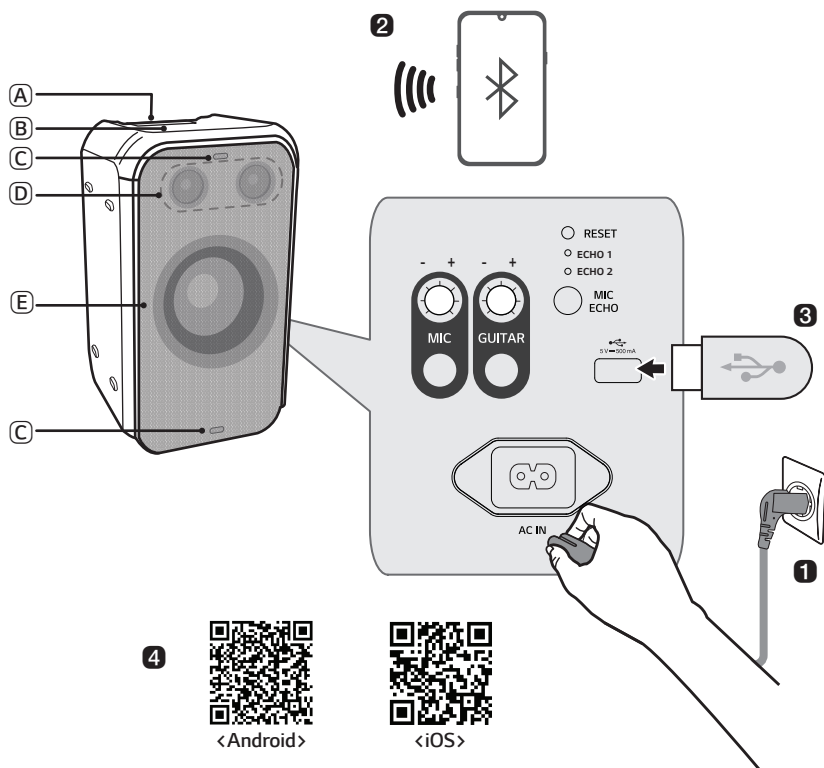
Model

XL5S



# Portable Bluetooth Speaker Quick Guide

## Connecting and Using the Speaker



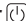





- (A) Handle
- (B) Controls
- (C) Flash Lighting
- (D) Speaker (Tweeter)
- (E) Speaker (Woofer) / Woofer Lighting

**1** Connect the power cord to the product by opening the rear cover and charge it before use



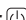


## 2 Connecting the speaker to a smartphone via Bluetooth (→ See “Connecting Smartphone to the Speaker via Bluetooth” on page 12.)

---

- 1 Press the **Power**  button to turn on the product.
- 2 Press the **Function**  button on the product repeatedly to select the BT function. The BT LED blinks.
- 3 Tap the **Settings**  button on your smartphone and select  **Bluetooth**. Turn on the **Bluetooth** function. (  Off >  On )
- 4 From the list of smartphone devices, find and tap on “LG-XL5S(XX).”
- 5 Once the smartphone is connected to the product via **Bluetooth**, the BT LED will turn on. Play a desired track in the music app on your smartphone.

## 3 Playing Music from the USB (→ See “Connecting the product to a USB storage device” on page 23.)

---

- 1 Open the back cover of the product and plug the USB storage device into the USB terminal.
- 2 Press the **Power**  button to turn on the product.
- 3 Press the **Function**  button on the product repeatedly to select the USB function. The USB LED will turn on.
- 4 Press the **Play/Pause**  button to enjoy the music.

## 4 Connecting to the LG XBOOM App (→ See “Installing app” on page 17.)

---

- 1 Find the **LG XBOOM app** on the Google Play or App Store and install it on your smartphone.
- 2 Run the **LG XBOOM app** and use its functions. (EQ, Wireless Party Link, Lighting, Setting etc.)

## 5 Power Saving (→ See “Power Saving Mode” on page 27.)

---

If there is no playback or button input for 15 minutes, the product turns off automatically. On the **LG XBOOM app**, you can enable or disable [Auto Power Management].



# Table of Contents

## Portable Bluetooth Speaker Quick Guide

- 2 Connecting and Using the Speaker

## Exploring the Product

- 5 Top & Front
- 7 Back

## Charge

- 9 Charging the Battery
- 11 Checking Battery Status

## Connecting to Bluetooth

- 12 Connecting Smartphone to the Speaker via Bluetooth
- 15 Connecting with two smartphones

## Connecting to the LG XBOOM App

- 17 Installing app
- 19 Using the Wireless Party Link

## Connecting to USB

- 23 Connecting the product to a USB storage device

## Additional Functions

- 25 Setting Sound Effects
- 26 Resetting the product
- 26 Initializing the Software
- 27 Power Saving Mode
- 27 Using Auto power - on.
- 27 Voice feedback function

## Safety Precautions

- 28 Safety and Regulatory
- 31 Prevention of product misuse

## Things to Check before Reporting Malfunction

- 35 Troubleshooting

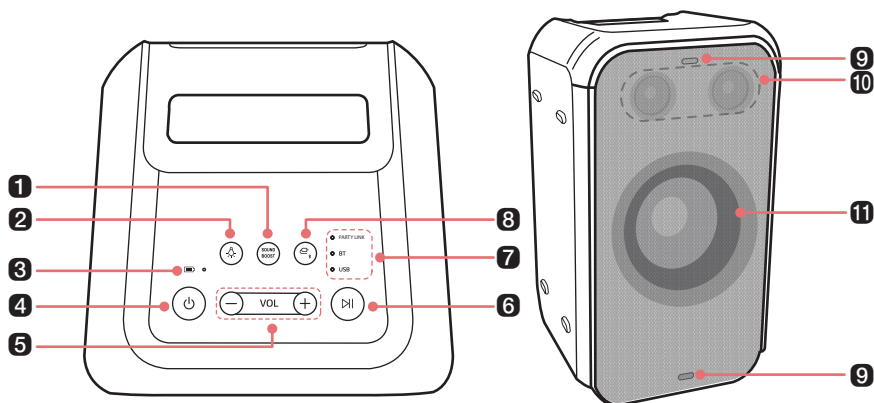
## Appendix

- 37 Product Specifications
- 38 Registered Trademarks and Licenses
- 39 Handling the Product



# Exploring the Product

## Top & Front




### 1 SOUND BOOST

Changes sound effect. (→ See “Setting Sound Effects” on page 25.)

### 2 Lighting

Press the button to select the desired Woofer Lighting.

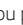
- You can customize the Woofer Lighting mode as you want by connecting to the **LG XBOOM app**.
- If you press and hold the **Lighting**  button for 2 seconds with product, turn the Woofer Lighting, Flash lighting off.

### 3 Battery LED

Please check the battery charging level and battery status. (→ See “Checking Battery Status” on page 11.)

### 4 Power

It turns on/off the product.

- If you press and hold the **Power**  button for 2 seconds with product turned on, you can see the battery status on the battery LED.

### 5 Volume

It controls the volume level.

### 6 Play/Pause

Press the button to operate the product.

- Play/Pause: Press the button.
- Moving to the next music: Press the button twice quickly.
- Moving to the previous music: Press the button three times quickly.

### 7 Function LED

Indicates the input mode or **Bluetooth** connection status.



---

## 8 **Function**

Press the button repeatedly to select the desired input mode or function.

- BT: It connects the product via **Bluetooth**.
- USB: It connects the product to a USB storage device.
- Press the **Function**  button on the product repeatedly to select the BT function. (→ See "Connecting Smartphone to the Speaker via Bluetooth" on page 12.)

---

## 9 **Flash Lighting**

Enjoy a flash light to the beat of the music.

---

## 10 **Speaker (Tweeter)**

Tweeter plays accurate and clean high notes.

---

## 11 **Speaker (Woofer) / Woofer Lighting**

Enjoy a powerful Bass sound and colourful light show to the beat of the music.

---

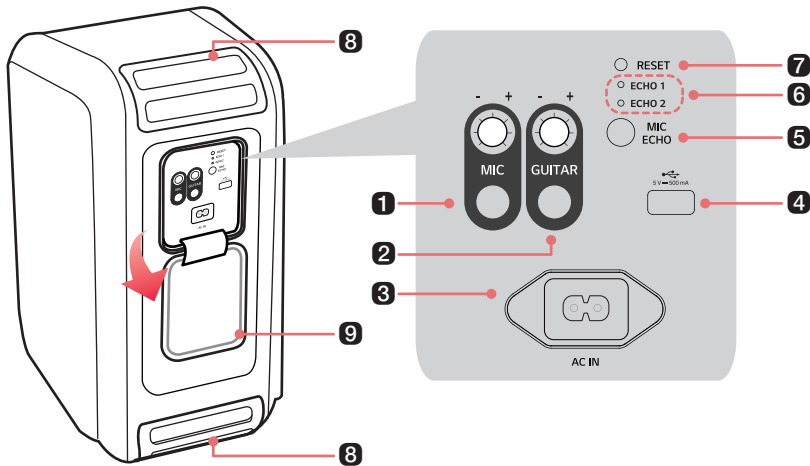
---

## **CAUTION**

- Place the product at a safe distance from the child's reach. Otherwise it may result in the product falling down and may cause personal injury and/or property damage.
  - Be careful that the speaker does not fall down. Otherwise it may result in the speaker malfunctioning and may cause personal injury and/ or property damage.
  - Warning - Flashing lights may trigger seizures or other health problems in people with photosensitivity issues, and they should consult their physician before using these features. Individuals who experience symptoms such as seizures, dizziness, confusion, unusual vision problems, or disorientation should immediately stop using the product and seek medical attention if the symptoms persist
-



## Back



### 1 MIC

Turns the knob to the right (+) or left (-) to adjust the Microphone sound volume.  
Connect a microphone to the MIC jack.

### 2 GUITAR

Turns the knob to the right (+) or left (-) to adjust the Guitar sound volume.  
Connect a guitar to the GUITAR jack.

### 3 AC IN

Plug in the power cord.

### 4 USB port

Plug in a USB storage device to enjoy music with the product.

### 5 MIC ECHO

Press the button to select the desired ECHO mode when the microphone is connected.

- ECHO mode: ECHO 1 / ECHO 2 / Off

### 6 ECHO LED

Indicates the connection status of ECHO mode.

### 7 RESET

When the product does not function properly, use a sharp object such as a pin to press the hole.

### 8 Handle

Use it when carrying the product.

### 9 Back Cover

Make sure to fully close the back cover after use.

- Ingress Protection: IPX4
  - Speaker tested under controlled laboratory conditions with an IPX4 rating. Resistant to splashed water. Dry before using. Do not charge while wet.



---

**⚠ CAUTION**

- Be careful not to drop the product when you carry it.
  - Disconnect the connected cable before carrying the product.
  - Do not step or sit on the product. Otherwise this product may fall down and may cause personal injury.
  - Be careful that the product should not fall down. Otherwise it may result in malfunction and cause personal injury and/ or property damage.
  - Be careful not to expose the product to sunlight for a long time to prevent discoloration.
  - Be careful not to drop the speaker. Mechanical shock may cause deterioration of water-resistant performance.
- 

---

**✔ Note**

- Using the back cover open may cause tremors, turn the back cover back as far as possible and fix it to the product before use.
-

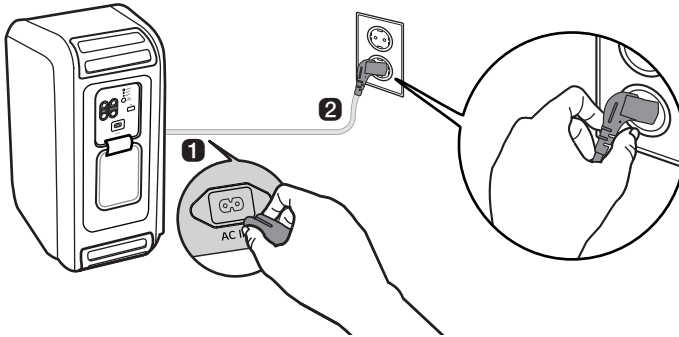


# Charge

## | Charging the Battery

This product has a built-in battery. Make sure to charge the battery sufficiently before use.

- ❶ Open the back cover and plug the power cable into the product.
- ❷ Plug the power cable connected to the product into an outlet.



---

### ✔ Note

- It takes about 3.5 hours to fully charge the speaker. The charging time may differ depending on the battery status or the product operation status.
  - Once the battery is fully charged, you can use the speaker for about 12 hours.
    - The listed time may differ depending on usage conditions and playing music sources.
-



## Attaching the ferrite core (optional)

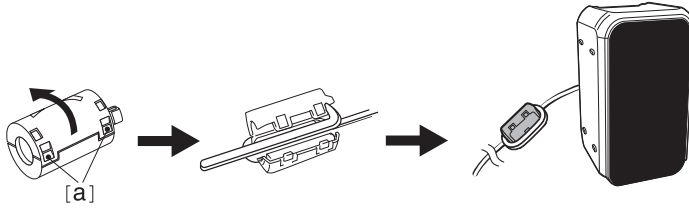
---

A ferrite core may not be provided depending on national standards.

### Attaching the ferrite core to the power cord cable

Attach the ferrite core to the cable to reduce radio noise.

- 1** Pull Part [a] to open the ferrite core.
- 2** Wind the power cord cable twice around the ferrite core.
- 3** Close the ferrite core until you hear a click.







# Checking Battery Status

## Charging Status

When the battery of the product starts charging, you can see the charging status in the battery LED.


Battery LED	LED Status / Battery Status
	It is green. / Charging is complete.
	It is red. / Charging is in progress.




### ✓ Note

- Playing tracks while charging may lengthen the charging time.
- When the speaker's battery is fully charged with the power off, the battery LED lights up green for 15 seconds and then off.

## Use Status

When the product is turned on, the battery status is displayed on the battery LED for 3 seconds.

If you press and hold the **Power**  button for 2 seconds with product on, you can see the battery LED for 3 seconds depending on the battery status.

Battery LED	LED Status / Battery Status
	Turns on in green. / The battery level is above 70 %.
	Turns on in amber. / The remaining battery level is 70 to 10 %.
	It blinks red continuously and you can hear a notification sound once. / The battery level is below 10 %, and the battery needs to be charged.

### ✓ Note

- The battery status cannot be checked while charging.



# Connecting to Bluetooth



## Connecting Smartphone to the Speaker via Bluetooth

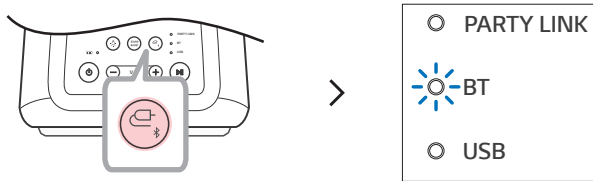
You can play music files stored on a **Bluetooth** device, or run music apps to enjoy the music with this product.




### Please check the following first.

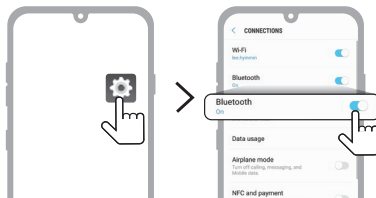
- The following are the **Bluetooth** specifications of the product.
  - **Bluetooth** version: 5.1
  - Codec: SBC, AAC
- How to connect the device to the product may differ depending on the type and model of the **Bluetooth** device. For information on how to connect the product, refer to the user manual of the **Bluetooth** device to be connected.

Select the [**Bluetooth**] menu on the smartphone's **Settings** screen. The menu access method may differ depending on the smartphone manufacturer and model.

- 1 Press the **Power**  button on the product to turn it on.
- 2 Press the **Function**  button on the product repeatedly to select the BT function. The BT LED blinks.

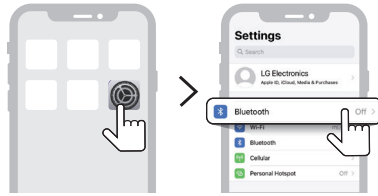


- 3 Tap the Setting  /  button on your smartphone and select  **Bluetooth**.



(Android Phone)

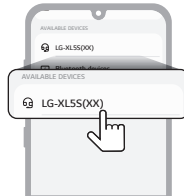




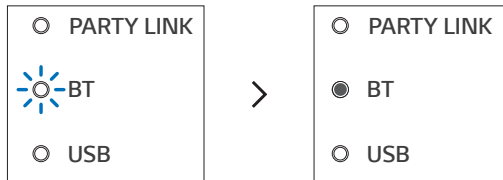
(iPhone)

4 Turn on the **Bluetooth** function. (Off > On)

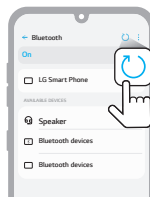
5 You will see a list of connectable devices on the smartphone screen. Find and tap the name "LG-XL55(XX)".



6 Once the smartphone is connected to the product via **Bluetooth**, the BT LED will turn on.

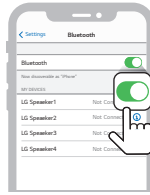


7 If "LG-XL55(XX)" does not appear on the list, tap on the **Refresh** (refresh icon) on an Android phone or restart **Bluetooth** on an iPhone.



(Android Phone)





(iPhone)

- 
- 8** Select and play a track on the smartphone.




---


**✓ Note**

- The closer the **Bluetooth** device is to the speaker, the better connection you will get.
  - If the **Bluetooth** device is not connected, the BT LED will blink. Connect the product again.
  - When using **Bluetooth**, adjust the volume of the **Bluetooth** device to an appropriate level.
  - XX are the last two digits of the **Bluetooth** address. An example would be "LG-XL5S(08)."
  - When power is connected to this product, if you try to connect to the product via a **Bluetooth** product with a connection history, the product will automatically turn on and connect to the **Bluetooth** device. While the power cable is connected, you can turn on this product. And, you can control this function in the **LG XBOOM app**. (→ See "Using Auto power - on." on page 27.)
-



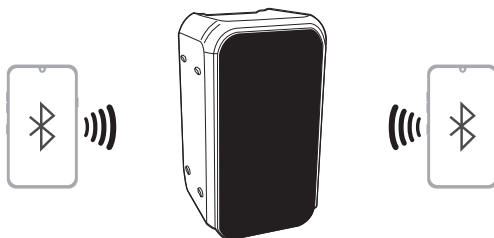
## Connecting with two smartphones

### Pairing (Connecting) Multiple Phones

- 1 Connect the product and a smartphone first. (→ See "Connecting Smartphone to the Speaker via Bluetooth" on page 12.)
- 2 Press and hold the **Function**  button on the product for 2 seconds. The BT LED blinks for 60 seconds.

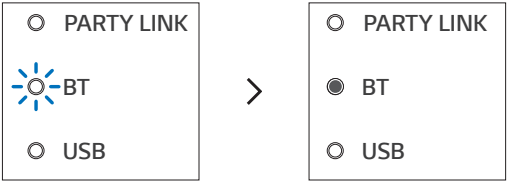


- 3 Connect an additional smartphone to the product within 60 seconds. (→ See "Connecting Smartphone to the Speaker via Bluetooth" on page 12.)





**4** When two smartphones and the product are connected, the BT LED turns on.



---

**✓ Note**

- Multi-phone pairing (connecting) connects up to two smartphones.
  - Even if two smartphones are connected, the product plays music only on one smartphone. If the music stops on the currently played smartphone, it can be played on another smartphone.
  - When two smartphones are connected and the product is turned off and on, only the last connected smartphone or the most recently played smartphone is automatically connected.
  - Only smartphones support multi phone pairing (connection). (Depending on specifications of the connected smartphones, multi phone pairing (connection) may not be connected.)
-



# Connecting to the LG XBOOM App

## I Installing app

Use the various functions of the speaker on the **LG XBOOM app**.

To install the **LG XBOOM app**, scan the QR code with an app or install **LG XBOOM app** on the Google Play or App Store.

### Please check the following first.

- The **LG XBOOM app** is available in the versions listed below.
  - Android OS: Version 6.0 or higher
  - iOS OS: Version 12.0 or higher
  - Minimum supported versions for each OS may change later.

## Downloading with a QR code

---

- 1 Scan the QR code with a QR code scan app.
- 2 You will be directed to the page where you can download the **LG XBOOM app**. Tap the app to install it.



(Android Phone OS)



(iPhone OS)

---



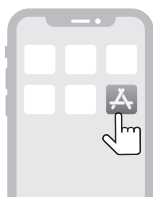
## Downloading in Google Play or App Store

---

- 1 Find the **LG XBOOM app** on the Google Play or App Store and install it on your smartphone.



(Android™ Phone)



(iPhone)

- 
- 2 Connect the smartphone to the speaker via **Bluetooth**. (→ See “Connecting Smartphone to the Speaker via Bluetooth” on page 12.)
  - 3 Open the **LG XBOOM app** installed on the smartphone.
  - 4 Follow the instructions on the **LG XBOOM app**. Agree to the Terms of Service, notice windows, access settings, etc.
  - 5 Start using the various functions on the **LG XBOOM app**.

---

### ✓ Note

- The menu access method may differ depending on the smartphone manufacturer and OS.
  - Google, Android, and Google Play are trademarks of Google LLC.
  - The software of this product can be updated with the **LG XBOOM app**. Do not turn off the power of the product while updating the software. Once the update is complete, the product power turns off automatically.
    - If you turn off the power of the product while the software is being updated, it may cause a product malfunction.
-



# Using the Wireless Party Link

You can connect multiple speakers in the **LG XBOOM app**'s Wireless Party Link. There are two ways for using the Wireless Party Link: Dual mode and Multi mode.

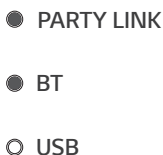
## Dual mode

Wireless Party Link Dual mode lets you enjoy stereo sound with two same model speakers.

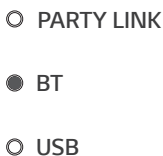
### Please check the following first.

- The two speakers of the same model are needed. (e.g. XL5S and XL5S)

- 1 Connect the speaker and a smartphone first. (→ See "Connecting Smartphone to the Speaker via Bluetooth" on page 12.)
- 2 Tap the Wireless Party Link in the **LG XBOOM app**.
- 3 Tap the Dual mode and connect another speaker following the instructions.
- 4 You can see the Dual mode LED on the speakers.
  - Main speaker: Party Link LED and BT LED turn on and output Left channel sound.
  - Other speaker: BT LED turns on and output Right channel sound.




(Main speaker)



(Other speaker)



## Connecting to your TV via Dual mode

- 1 Follow the aforementioned instructions to connect two speakers via Dual mode. (→ See "Dual mode" on page 19.)
- 2 Press and hold the **Function**  button on the main speaker for 2 seconds. Then the BT LED will blink for 60 seconds.
- 3 In the TV settings, find and select the main speaker within 60 seconds. You can listen to the TV sound through two speakers.

### ✓ Note

- When using in dual mode with a TV, you cannot control the speakers with the **LG XBOOM app**.

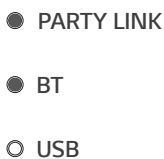
## Multi mode

Wireless Party Link Multi mode lets you enjoy more powerful sound with multiple speakers.

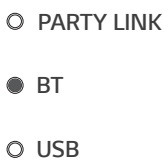
### Please check the following first.

- You can connect multiple LG **Bluetooth** speakers. (e.g. XL5S and XL7S)

- 1 Connect the speaker and a smartphone first. (→ See "Connecting Smartphone to the Speaker via Bluetooth" on page 12.)
- 2 Tap the Wireless Party Link in the **LG XBOOM app**.
- 3 Tap the Multi mode and toggle the function on.
- 4 Search for nearby speakers and select the speakers you want to connect to.
- 5 You can see the Multi mode LED on the speakers.
  - Main speaker: Party Link LED and BT LED turn on and the speaker outputs sound.
  - Other speakers: BT LED turns on and speakers output sound in sync with the main speaker.



(Main speaker)




(Other speakers)



---

#### ✔ Note

- The Main speaker connects only one **Bluetooth** device.
  - When using Dual/Multi mode to connect multiple speakers, the multi phone pairing connection is not supported.
  - When you turn the speakers off and on again, the speakers do not automatically reconnect.
  - When you connect multiple speakers in Dual/Multi mode in USB function, it will change to **Bluetooth** function.
  - To change the connected **Bluetooth** device in Dual/Multi mode, press and hold the **Function**  button for 2 seconds. When you hear a beep sound and the BT LED blinks, connect to the desired **Bluetooth** device.
  - Keep the distance between the speakers as close as possible each other.
  - Depending on the network environment, this function may not work well.
  - The screen of a device such as a TV and the sound from the speaker may not match.
  - When multiple speakers are connected in Multi mode, volume and EQ linkage between the Main speaker and Other speakers is not available.
  - When using Dual/Multi mode, Voice canceller and Key changer function is disabled.
-



# Interworking multiple speakers

This speaker interworks with other LG **Bluetooth** speakers such as XL7S/XL5S.

Dual mode	Same model (e.g. XL5S/ XL5S) Main/Other
Volume	0
EQ	0
Lighting	0
Auto Power Management	0

Multi mode	Same series (e.g. XL5S/ XL7S) Main/Other
Lighting	0
Auto Power Management	0

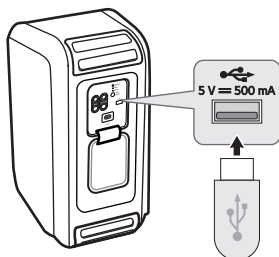




# Connecting to USB

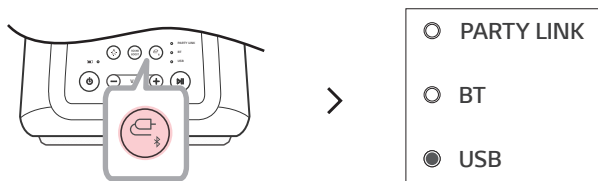
## Connecting the product to a USB storage device

You can enjoy sound by connecting a USB storage device with music files to the product.

- 1 Open the back cover of the product and plug the USB storage device into the USB terminal.
  - The product cannot play any devices connected with a USB storage device hub or a USB storage device cable.
  - The product cannot be connected to a USB storage device, USB type MP3 player or card reader that requires a separate device drive to be installed.



- 2 Press the **Power**  button to turn on the product.
- 3 Press the **Function**  button on the product repeatedly to select the USB function. The USB LED will turn on.



- 4 Press the **Play/Pause**  button to enjoy the music.



#### ✔ Note

- USB devices with large storage volume can take several minutes or more to browse files.
- LG Electronics is not responsible for any data loss. Please always back up the data to minimize damage caused by data loss.
- Only FAT16/FAT32 formats are supported. exFAT/NTFS format is not supported.
- When the USB storage device is not properly recognized, the USB LED will blink. Check if the USB storage device is supported and plug in again.
- Use the USB port of this product only for playing a media file. You cannot charge external devices with the USB port.

## USB storage devices supported

- USB flash device
- USB 2.0

This product may not recognize some USB storage devices.

## Playable file specifications

File extension	Sampling frequency / Bitrate
MP3	32 kHz - 48 kHz / 8 kbps - 320 kbps
WMA	32 kHz - 48 kHz / 56 kbps - 128 kbps



- Number of playable files: Up to 2,000
- Maximum number of directories: Up to 200
- This product cannot play files protected by DRM (Digital Rights Management).
- This product cannot play video files from a USB storage device.



# Additional Functions

## | Setting Sound Effects

You can select a desired sound effect by using **SOUND BOOST**  button.

LED (○ Off / ● On)	Function / Description
	Standard / You can enjoy High-fidelity sound with balanced and natural. Custom / You can adjust the sound as you want. If you want to use Custom EQ, connect to the <b>LG XBOOM app</b> .
	SOUND BOOST / You can enjoy the wide sound field and powerful sound.

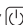
### ✔ Note

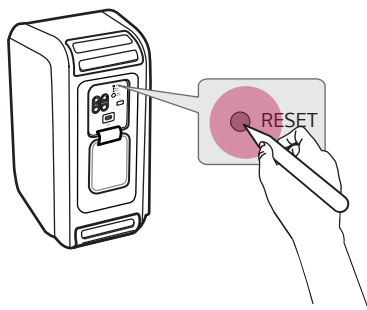
- Because fine-tune sound to provide optimal high-quality sound, It might be a little difference between sound effect modes.



## Resetting the product


You can reset the product when it operates improperly.

- 1 Open the back cover of the product and use a sharp object to press the **RESET** button to power off the product.
- 2 Turn on by pressing the **Power**  button.



## Initializing the Software

It initializes the **Bluetooth** connection and settings of the product.

- 1 Press and hold the **Function**  button on the product for 7 seconds or longer.
- 2 All function LEDs will blink four times to initialize the **Bluetooth** connection and all settings.

---

### ✓ Note

- To use the **Bluetooth** function after initializing the product, connect the **Bluetooth** device again.
-




## Power Saving Mode

If there is no playback or button input for 15 minutes, the product turns off automatically. You can enable or disable the power saving mode as follows.

Function	How to Use
Enable	Set [Auto Power Management] to [Enable] in the <b>LG XBOOM app</b> .
Disable	Set [Auto Power Management] to [Disable] in the <b>LG XBOOM app</b> .

### ✓ Note




- When the power saving function is off, the product turns off only when the **Power**  button is pressed or the battery is discharged.

## Using Auto power - on.

You can easily use the speaker with your **Bluetooth** device.

### Please check the following first.

- The speaker has a history of **Bluetooth** connection with the **Bluetooth** device.
- The speaker is charging and the power is off.

- 1 Tap the Setting button on your **Bluetooth** device and select  **Bluetooth**.
- 2 Turn on the **Bluetooth** function. ( Off >  On)
- 3 You will see a list of connectable devices on the **Bluetooth** device screen. Find and tap the name "LG-XL5S(XX)".
- 4 The speaker power is turned on automatically. Then the **Bluetooth** device and the speaker are connected automatically.

### ✓ Note

- You can turn this function on and off with the **LG XBOOM app** only.

## Voice feedback function

When you select a function or sound, the current status of the product is guided by voice. (English voice only)

You can turn this function on and off with the **LG XBOOM app**.



# Safety Precautions

## | Safety and Regulatory



**CAUTION:** TO REDUCE THE RISK OF ELECTRIC SHOCK DO NOT REMOVE COVER (OR BACK) NO USER-SERVICEABLE PARTS INSIDE REFER SERVICING TO QUALIFIED SERVICE PERSONNEL.



This lightning flash with arrowhead symbol within an equilateral triangle is intended to alert the user to the presence of uninsulated dangerous voltage within the product's enclosure that may be of sufficient magnitude to constitute a risk of electric shock to persons.



The exclamation point within an equilateral triangle is intended to alert the user to the presence of important operating and maintenance (servicing) instructions in the literature accompanying the product.

### **WARNING:**

- TO PREVENT FIRE OR ELECTRIC SHOCK HAZARD, DO NOT EXPOSE THIS PRODUCT TO RAIN OR MOISTURE.
- Do not install this equipment in a confined space such as a book case or similar unit.

### **CAUTION:**

- Do not use high voltage products around this product. (ex. electrical swatter) This product may malfunction due to electrical shock.
- No naked flame sources, such as lighted candles, should be placed on the apparatus.
- Do not block any ventilation openings. Install in accordance with the manufacturer's instructions. Slots and openings in the cabinet are provided for ventilation and to ensure reliable operation of the product and to protect it from over heating. The openings should never be blocked by placing the product on a bed, sofa, rug or other similar surface. This product shall not be placed in a built-in installation such as a bookcase or rack unless proper ventilation is provided or the manufacturer's instruction has been adhered to.
- The apparatus should not be exposed to liquids (dripping or splashing) and no objects filled with liquids, such as vases, should be placed on the apparatus.
- For safety marking information including product identification and supply ratings, please refer to the main label on the bottom or the other surface of the product.
- Be careful to make sure children do not put their hands or any objects into the \*speaker duct.
  - \* speaker duct: A hole for plentiful bass sound on speaker cabinet. (enclosure)



**CAUTION concerning the Power Cord**

For pluggable equipment, the socket-outlet shall be easily accessible.

Check the specification page of this owner's manual to be certain of the current requirements.

Do not overload wall outlets. Overloaded wall outlets, loose or damaged wall outlets, extension cords, frayed power cords, or damaged or cracked wire insulation are dangerous. Any of these conditions could result in electric shock or fire. Periodically examine the cord of your device, and if its appearance indicates damage or deterioration, unplug it, discontinue use of the device, and have the cord replaced with an exact replacement part by an authorized service center.

Protect the power cord from physical or mechanical abuse, such as being twisted, kinked, pinched, closed in a door, or walked upon. Pay particular attention to plugs, wall outlets, and the point where the cord exits the device.

**CAUTION** when using this product in environments of low humidity

- It may cause static electricity in environments of low humidity.
- It is recommended to use this product after touching any metal object which conducts electricity.



### For models using a battery

This device is equipped with a portable battery or accumulator.

**CAUTION:** Risk of fire or explosion if the battery is replaced by an incorrect type.

### For models using a built-in battery

Do not store or transport at pressures lower than 11.6 kPa (0.116 bar) and at above 15,000 m (9.32 miles) altitude.

- replacement of a battery with an incorrect type that can defeat a safeguard (for example, in the case of some lithium battery types);
- disposal of a battery into fire or a hot oven, or mechanically crushing or cutting of a battery, that can result in an explosion;
- leaving a battery in an extremely high temperature surrounding environment that can result in an explosion or the leakage of flammable liquid or gas; and
- a battery subjected to extremely low air pressure that may result in an explosion or the leakage of flammable liquid or gas.

### Symbols

~ : Alternating current (AC).

— : Direct current (DC).

⌚ : This is a class II equipment.

⏻ : Standby power state.

⏻ : The power is turned on.

⚡ : Danger voltage.



# Prevention of product misuse

To prevent misuse of the product, please be sure to check the contents below.

## Precautions for installing the product

---

- Do not install the product in an unstable or vibrating place, such as on a shaking shelf or inclined surface. Install the product on a firm and level surface.
  - Otherwise, the product may fall or tip over and cause injury.
  - If you install the product on an unstable surface, the product may not work properly.
- If you install the product on a piece of furniture or shelf, make sure that the bottom front of the product does not protrude. Always use a piece of furniture or shelf that fits the product size.
  - Otherwise, the product may lose its balance and fall, causing injury or product damage.
- Install the product in a safe place. Otherwise, a child may bump into an edge of the product and get injured.
- Install the product in a place free from electromagnetic interference for proper operation.
- If you install the product in a place that does not meet the general use conditions, an unexpected quality problem may arise. So, make sure that you contact the service center first before installing the product in such a place.
- Do not keep the product in a place where the temperature is too high (above 35 °C (95 °F)) or too low (below 5 °C (41 °F)) or a place with too much humidity.
- Avoid places exposed to direct sunlight or heat, e.g., near a heater. Do not use or keep flammable sprays or substances near the product.
  - Otherwise, there is a risk of explosion or fire.
- Do not install the product in a place with too much moisture, dust or soot.
  - Otherwise, it may cause a fire or electric shock.
- Do not install the product in a narrow space, such as inside a bookshelf, that does not ventilate well. Do not cover the product with a table cover or curtain.
  - Otherwise, it may increase the product temperature, causing a breakdown or fire.
- Connect the power plug of the product to a power outlet that is easily accessible.
  - When a fire or other problem occurs in the product, you must be able to remove the power plug quickly.
- Do not connect multiple products to one power outlet at the same time.
  - Otherwise, it may cause overheating, resulting in a fire.



## Precautions for using the product

---

- Do not lift or move the product while it is operating.
  - Otherwise, it may cause a breakdown.
- When moving the product, pull out the power cord and all cables connected to the product.
  - Otherwise, it may cause a fire or electric shock.
- Stop using the product immediately if you notice smoke or a strange odor. In this case, turn off the power immediately, disconnect the power plug, and contact the service center.
  - Using the product in this state may result in a fire or electric shock.
- Do not insert metal objects such as coins and hairpins or flammable objects such as paper and matchsticks into the product. Make sure that you tell any children not to do so.
  - Otherwise, it may cause a breakdown.
- If a foreign substance is inserted into the product, disconnect the power plug and contact the service center.
- Do not put a heavy object on top of the product.
  - Otherwise, it may tip over or fall, causing injury.
- Make sure that a child does not hang on the product or get on it.
  - Otherwise, the product may tip over or fall, causing injury. Make sure that you tell any children not to do so.
- Remove the power plug during thunderstorms.
  - Otherwise, it may cause a fire.
- Do not place vessels with liquid, such as a vase, pot, cosmetics, or medicine, on top of the product.
  - Otherwise, it may result in a fire, electric shock, or injury due to its fall, etc.
- Make sure that you connect the power plug firmly. Do not use voltage other than the rated voltage indicated on the product.
  - An insecure connection may result in a fire.
- Do not insert a conductor, such as chopsticks, into the groove on the other side of the product while the power plug is connected to an outlet. Do not touch the power plug immediately after unplugging it from the outlet.
  - Otherwise, it may cause electric shock.
- Hold the power plug with dry hands.
  - Otherwise, it may cause electric shock.
- Do not move or push the product while holding a product cable such as a power cord.
  - The cable may get damaged and cause a breakdown or result in a fire or electric shock.
- When removing a cable plugged into the product, make sure that you hold the connector at the end of the cable. Do not hold the cable line.
  - Otherwise, it may result in an injury or the product may fall and cause a breakdown.
- Do not keep the product in a place exposed to heat, e.g., near a heater.
  - Otherwise, it may cause a fire or malfunction.
- Do not disassemble, repair, or modify the product.
  - Otherwise, it may cause a breakdown, resulting in a fire, electric shock, or injury.
- Keep plastic wraps out of reach of toddlers.
  - Otherwise, toddlers may choke on the plastic wraps.
- Do not drop an object on the product or make an impact on it. Keep the product away from places with severe vibrations or magnets.
- Do not damage, modify, bend, twist, or heat a power cord.
  - Otherwise, it can damage the power cord, resulting in a fire or electric shock.



- When you are not using the product for a prolonged period, such as when you are away from home, unplug the power cord from the power outlet.
  - If dust accumulates, it can cause heat, resulting in electric shock or fire due to a short circuit.
- Do not dispose of waste batteries together with regular waste. Dispose of them separately.
  - Otherwise, there is a risk of explosion or fire.
- Do not use high voltage products around this product. (ex. electrical swatter)
  - This product may malfunction due to electrical shock.
- Do not touch the power plug immediately after unplugging it from the outlet.
  - Otherwise, it may cause electric shock.
- Connect the power plug to a grounded outlet or extension cord. (This does not apply to products without a ground.)
  - Otherwise, it may cause a breakdown or electric shock due to a short circuit.
- In the case of a product with a vent, keeping the product turned on for a prolonged period can result in the vent getting hot. Do not touch the vent when it is hot. The heat is not a fault of the product and does not cause any malfunction. So, you may use the product without worry.
- Do not damage the power cable, AC adapter, or power plug. Do not place a heavy object on top of the power cable or AC adapter.
  - Otherwise, it may cause a fire or electric shock.
- If dust, dirt, etc. is found on the power plug pins, an AC adapter, or a power outlet, wipe it completely.
  - Otherwise, it may cause a fire.
- In the case of a product with a power cord or AC adapter, use only genuine power cords and AC adapters provided by LG Electronics.
  - Otherwise, it may cause a fire or electric shock.
- If you are using headphones or earphones, do not turn on the volume too loudly or use them for a prolonged period. [This only applies to models that support headphones or earphones]
  - Otherwise, it may negatively affect your hearing ability.
- The software of this product can be updated with the **LG XBOOM app**. Do not turn off the power of the product while updating the software. Once the update is complete, the product power turns off automatically.
  - If you turn off the power of the product while the software is being updated, it may cause a product malfunction.



**The following only applies to models with a remote control**

- Do not let children use the remote control. Keep the remote control out of reach of toddlers.
- Do not let children put the remote control in their mouth. Make sure that children don't swallow the remote control cover or a battery. If a child swallowed one, consult a physician immediately.
- Beware that children may step on the remote control cover and get injured.
- Remove obstacles between the product and the remote control for the smooth operation of the remote control.

**The following only applies to models that use optical discs**

- Do not insert your hand into a disc drive or pull it out forcefully.
- Make sure that children do not insert their hands into the disc drive.

**The following only applies to models that able to watch video**

- Refrain from watching a 3D video if you didn't have enough sleep or after drinking alcohol.
  - Some 3D videos may surprise or excite people.
- If any of the following symptoms occur while watching a video, stop watching it immediately and take a rest.
  - If any of the symptoms continue, consult a physician. Vertigo, burning sensation of eyes or face, unconscious motion, spasm, clouded consciousness, confusion, disorientation, nausea.
- You may suffer a symptom such as a seizure when you watch a certain image in a video or game or a video with a certain pattern or flashing lights. If you or any of your relatives have a history of epilepsy or seizures, consult a physician before watching.
- When you watch a 3D video, remove objects that are fragile or can cause injury from your surroundings.
  - If you mistake a 3D video as real or move your body with surprise, you or your nearby relatives may get injured or objects near you may get damaged.

## **Precautions for cleaning the product**

---

- Do not spray water directly onto the product when cleaning it.
  - Otherwise, it may cause a fire or electric shock.
- When cleaning the product, make sure that you pull out the power cord first and wipe the surface of the product lightly with a dry cloth. Do not use chemicals or detergents when cleaning the product. They may deteriorate the product surface or peel off the paint from the product (benzene, alcohol, etc.).



# Things to Check before Reporting Malfunction

## | Troubleshooting

If you experience the following symptoms while using the product, please check them again. They may not be malfunctions.

Symptom	Cause and Solution
Power is not supplied.	<ul style="list-style-type: none"><li>• The battery is discharged. Recharge the battery.<ul style="list-style-type: none"><li>- Charge the product by connecting the power cord to the power input terminal.</li></ul></li></ul>
There is no sound or the sound is distorted.	<ul style="list-style-type: none"><li>• The volume of product or the connected <b>Bluetooth</b> device may be set to the minimum. Adjust the volume of product or the connected <b>Bluetooth</b> device to the appropriate level.</li><li>• Using an external device with the maximised sound may distort the sound. Lower the volume of the external device to use.</li></ul>
The USB storage device is not recognized.	<ul style="list-style-type: none"><li>• The product may not support the file system of the USB storage device. Format the USB storage device and reconnect it. When formatting, check the supported USB storage device format available on the product and select an appropriate file system. (→ See "Connecting the product to a USB storage device" on page 23.)</li></ul>
Bluetooth connection failed.	<ul style="list-style-type: none"><li>• Check if the <b>Bluetooth</b> setting is enabled.</li><li>• Turn off the <b>Bluetooth</b> setting and on again on the <b>Bluetooth</b> device.</li><li>• Make sure there are no obstacles between product and the <b>Bluetooth</b> device.</li><li>• <b>Bluetooth</b> pairing (connecting) may fail depending on the <b>Bluetooth</b> device type and the surrounding environment.</li></ul>




---

**The product does not operate normally.**

- Battery discharge may cause the **Bluetooth** information to be deleted. If the product's power supply is blocked, previous settings may not be saved.
- Use this product in a place where the temperature and humidity are not too high or low. If the problem continues, contact LG Electronics' Customer Service Center.
- If a problem occurs while charging the battery of the product, the battery LED alternates between red and amber and charging stops. Unplug the adapter from the outlet.

---

**The above solutions do not work.**


- Initializes the settings of the product. Press and hold the **Function**  button on the product for 7 seconds or longer. (➔ See "Initializing the Software" on page 26.)
  - Use a sharp object such as a pin to press the **RESET** button. (➔ See "Resetting the product" on page 26.)
-



# Appendix

## Product Specifications

General	
Power requirements	Refer to the main label. Built-in rechargeable battery
Power consumption	Refer to the main label.
Dimensions (W x H x D)	Approx. 289 mm X 570 mm X 280 mm (11.4 inch x 22.4 inch x 11 inch)
Operating Temperature	5 °C - 35 °C (41 °F to 95 °F)
Operating Humidity	5 % - 80 % RH
Ingress protection	IPX4

Input	
USB	5 V  500 mA
Microphone (MIC IN)	Sensitivity 20 mV (1 kHz), 6.3 mm jack
Guitar (GUITAR IN)	Sensitivity 190 mV (1 kHz), 6.3 mm jack

Battery	
Battery capacity	Li-ion 14.8 V, 2985 mAh
Operating time	12 hours The listed time may differ depending on usage conditions and playing music sources.
Charging time	3.5 hours Charging time may vary depending on the battery or operation status.

Amplifier (RMS output)	
Woofer	100 W RMS
Tweeter	50 W RMS x 2

- Design and specifications are subject to change without notice.



## | Registered Trademarks and Licenses

All trademarks and trade names are owned by their respective owners.



The **Bluetooth**® word mark and logos are registered trademarks owned by the **Bluetooth** SIG, Inc. and any use of such marks by LG Electronics is under license.

Other trademarks and trade names are those of their respective owners.



“Made for iPhone,” and “Made for iPod” mean that an electronic accessory has been designed to connect specifically to iPhone, or iPod, respectively, and has been certified by the developer to meet Apple performance standards. Apple is not responsible for the operation of this device or its compliance with safety and regulatory standards. Please note that the use of this accessory with iPhone or iPod may affect wireless performance.

The system is compatible with the latest iOS. Depending on your iPhone/iPod software version, you may not control your iPhone/iPod from the unit.



## **| Handling the Product**

### **When shipping the Product**

Please save the original shipping carton and packing materials. If you need to ship the product, for maximum protection, re-pack the product as it was originally packed at the factory.

### **Keeping the exterior surfaces clean**

- Do not use volatile liquids such as insecticide spray near the product.
- Wiping with strong pressure may damage the surface.
- Do not leave rubber or plastic products in contact with the product for a long period of time.

### **Cleaning the product**

To clean the product, use a soft, dry cloth. If the surfaces are extremely dirty, use a soft cloth lightly moistened with a mild detergent solution. Do not use strong solvents such as alcohol, benzene, or thinner, as these might damage the surface of the product.



