

Café™ 36" Built-In Gas Cooktop

CGP60362TS1

C A F É

DISTINCT BY DESIGN™



FEATURES & BENEFITS

- Dishwasher-Safe Grates - Heavy-duty grates are easy to clean in the dishwasher
- Spend Less Time Cleaning Up - Sealed cooktop burners contain spills and make cleaning quick and easy
- Designed for Easy Cleaning - Recessed surface helps contain spills and make cleaning easy
- 15,000 BTU Power Boil Burner - Delivers high heat for fast boiling
- Precise Simmer Burner - Protect delicate foods with low, even heating
- MAX Burner System - Delivers the same maximum BTU power to propane and natural gas cooktops
- Fit Guarantee - Replacing a similar cooktop from GE Appliances or another brand? GE cooktops are guaranteed for an exact fit or GE Appliances will pay up to \$100 toward modifications.

APPEARANCE

Color Appearance	Stainless Steel
Control Knobs	Dishwasher Safe, Stainless Steel Appearance, White LED Backlit
Cooktop Burner Grate Color	Matte Black
Installation	Over Single Wall Oven (except Single-Double), Above Warming Drawer

FEATURES

Cooktop Burner Type	5 Sealed, Cooktop Surface
Ignition System	Electronic
Burner - Left Front	9,500 BTU
Burner - Left Rear	12,500 BTU
Burner - Right Front	15,000 BTU Power Boil
Burner - Right Rear	9,500 BTU
Burner - Center	5,000 BTU
Control Type	Knob
Control Location	Front Center
Cooktop Burner Grate Features	Continuous Grates Dishwasher Safe
Cooktop Burner Grate Material	Standard Cast
Fuel Type	Natural Gas (factory set)
Valves (Degree of Turn)	270
Cooktop Type	Continuous Grates

WEIGHTS & DIMENSIONS

Approximate Shipping Weight	44 lb
Cabinet Width	36 in
Cutout Dimensions (W x D) (In.)	33-7/8 x 19-1/8
Net Weight	38 lb
Overall Depth	21 in
Overall Height	4-3/4 in
Overall Width	36 in

POWER/RATINGS

Burner BTU Ratings (000's/BTU) - LP Gas	(1) 15.0 (1) 12.0 (2) 9.5 (1) 5.0
Burner BTU Ratings (000's/BTU) - Natural Gas	(1) 15.0 (1) 12.0 (2) 9.5 (1) 5.0
Volts/Hertz/Amps	120V, 60Hz, 5A

ACCESSORIES

Griddle	Cast Iron (optional)
Stainless Steel Cleaner	Included
LP Conversion Kit	Included

This model is not compatible with Café Customization Hardware.

Café™ 36" Built-In Gas Cooktop

CGP60362TS1

CAFÉ

DISTINCT BY DESIGN™

WARRANTY

Parts warranty	Limited 1-year entire appliance
Labor warranty	Limited 1-year entire appliance
Warranty notes	See written warranty for full details

DIMENSIONS AND INSTALLATION

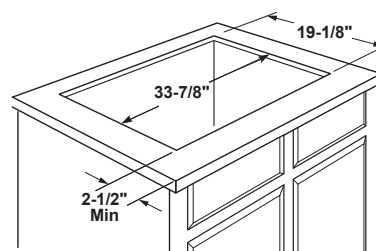
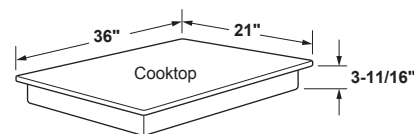
AGA Requirement: All gas cooktop models require 7/16" free area below cooktop height to combustible material. Requires 18" minimum from countertop to adjacent overhead cabinets.

Note: If installing with Telescopic Downdraft System, consult both cooktop and downdraft installation instructions packed with product before installing. Cooktop gas/electric supply may need to be re-routed to install downdraft.

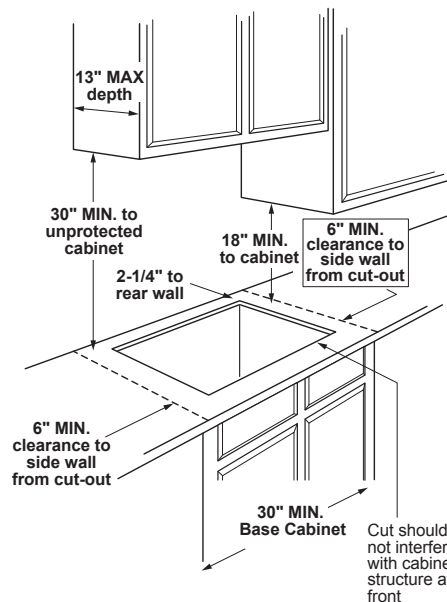
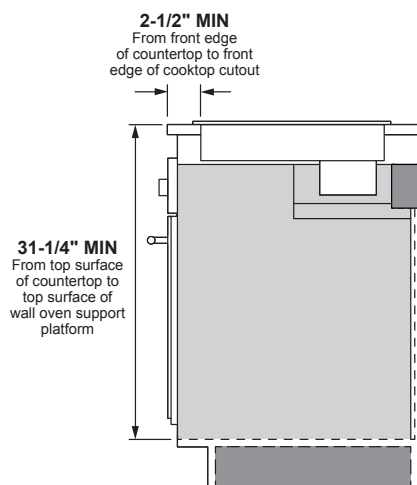
Electrical Rating: 120V, 60Hz, 5A

Installation With Single Wall Oven Information: 36" Gas cooktops are approved for use over select 30" Wall Ovens and Warming Drawers. Refer to cooktop and wall oven/warming drawer installation instructions packed with product for current dimensional data.

Installation Information: Before installing, consult installation instructions, packed with product, for current dimensional data.



Installation above a wall oven



Dimension and installation information are shown in inches.
*Allow 5-3/4" depth at rear for electrical and gas connections