

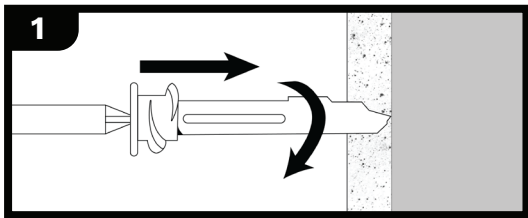
**SELF-DRILLING
DRYWALL ANCHOR
INSTRUCTIONS**



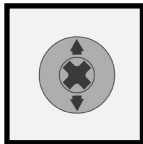


Please follow the installation instructions included with your Séura mirror. The enclosed drywall anchors are recommended for drywall installation. If installing into a wood wall stud, use a wood screw. If installing into another surface, use appropriate hardware.

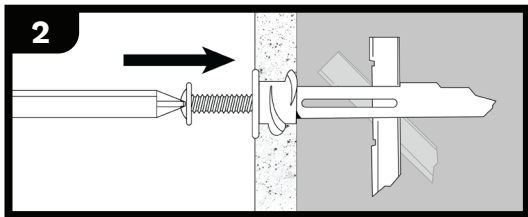
1. Using a Phillips screwdriver, screw the self-drilling drywall anchor into the drywall until the head of the anchor is flush with the surface of the wall.



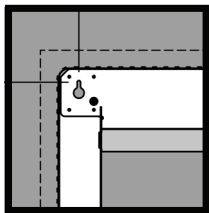
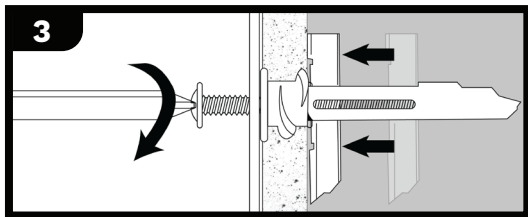
Tip: The arrows on the end of the drywall toggle indicate the direction the toggle will expand behind the wall. To avoid contact with a nearby wall stud, ensure the arrows are vertically oriented.



2. To set the clamp behind the drywall, place the mounting screw into the anchor and push or tap firmly until approximately 1-inch of the screw is protruding (do not rotate).



3. Place the lighted mirror housing fixture over the protruding mounting screw. Turn the screw until fastened tightly. The toggle tightens against back of drywall.



Note: Align the mounting screws with the keyhole slots on the mirror housing before fully tightening.