



# 41920 PACIFICO

Dimensions shown as Width x Depth x Height. Specifications are correct at time of printing and are subject to change without notice.  
LHF - left hand facing RHF - right hand facing IA - inside arm to inside arm For SKU options: R=Manual Recline, E=Power Recline



1R Manual Recliner  
36 x 39 x 42"  
91 x 99 x 107cm  
IA: 23" / 58cm



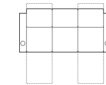
2R LHF Arm, Man  
Recliner  
30 x 39 x 42"  
76 x 99 x 107cm



3R RHF Arm, Man  
Recliner  
30 x 39 x 42"  
76 x 99 x 107cm



4R Armless Loveseat  
Man Recl  
46 x 39 x 42"  
117 x 99 x 107cm



51 Sofa Recliner  
83 x 39 x 42"  
211 x 99 x 107cm  
IA: 70" / 178cm



5R LHF Arm, RHF  
Wedge, Man Recl  
42 x 39 x 42"  
107 x 99 x 107cm  
IA: 23" / 58cm



6R RHF Arm, LHF  
Wedge, Man Recl  
42 x 39 x 42"  
107 x 99 x 107cm  
IA: 23" / 58cm



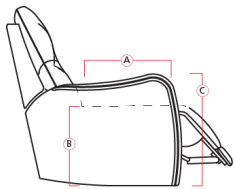
7R RHF Wedge, Man  
Recliner  
36 x 39 x 42"  
91 x 99 x 107cm



8R Armless Manual  
Recliner  
23 x 39 x 42"  
58 x 99 x 107cm



9R LHF Wedge, Man  
Recliner  
36 x 39 x 42"  
91 x 99 x 107cm



## Dimensions

- A - Seat Depth - 22" / 56cm
- B - Seat Height - 21" / 53cm
- C - Arm Height - 26" / 66cm

## Features

- Chaise styling for ultimate comfort and support in full recline
- Hardwood, softwood and engineered wood products; all joints pinned & glued for uniformity & strength
- Back: 11 or 12 gauge sinuous springs which are engineered to provide lasting comfort and strength
- Seat: 8 gauge sinuous wire springs for superior ride and comfort
- Seat Fill - 1.8 lb high resilience foam for superior comfort without loss of support
- Back Fill - Blown fibre back cushions
- Inside Latch for manual operation
- D-pull for manual operation of armless skus
- Toggle Switch for power operation
- LED cupholder switch for power operation
- Touch button for power operation

## Options

- Stainless Steel Cupholder
- Antique Cupholder
- Wireless Bass Shaker
- LED cupholder with groundlighting



# 41920 PACIFICO

## Popular Configurations

Note: Always assemble configurations from right hand facing to left hand facing components.

### How We Measure

**Height** - measured from the highest point of the back pillow to the floor.

**Depth** - measured from the front edge of the seat cushion to the top of the back.

**Width** - measured from the widest point of the arm or arm pillow to the widest point of the opposite arm or arm pillow.

**Arm Height** - measured from the top of the arm to the floor.

**Seat Height** - measured from the crown of the seat cushion to the floor.

### Warranty

**Wood Frames, Springs or Webbing** - ten year warranty

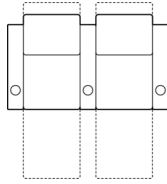
**Metal Frames** - two year warranty under normal household use

**Motion Reclining Mechanisms** - seven year warranty

**Reclining Chairs, Sofabed Mechanisms and Sofabed Mattresses** - two year warranty

**Seat Cushion Foam and Fibre-filled**

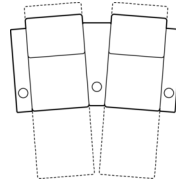
**Components** - five year pro-rated warranty



**2-Seat Straight HTS**

66 x 67"

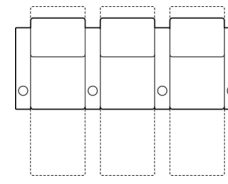
168 x 170cm



**2-Seat Curved HTS**

72 x 69"

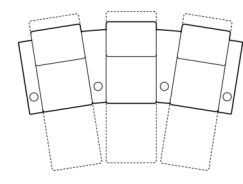
183 x 175cm



**3-Seat Straight HTS**

96 x 67"

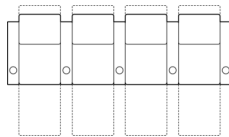
244 x 170cm



**3-Seat Curved HTS**

107 x 71"

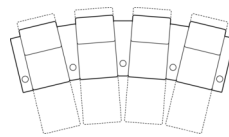
272 x 180cm



**4-Seat Straight HTS**

125 x 67"

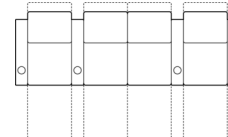
318 x 170cm



**4-Seat Curved HTS**

141 x 76"

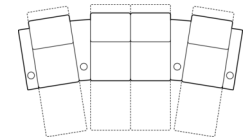
358 x 193cm



**4-Seat Straight HTS with Loveseat**

119 x 67"

302 x 170cm



**4-Seat Curved HTS with Loveseat**

130 x 72"

330 x 183cm