



SIMPLE MANUAL

Wireless Sound Bar

Please read this manual carefully before operating your set and retain it for future reference.

To view the instructions of advanced features, visit <http://www.lg.com> and then download Owner's Manual. Some of the content in this manual may differ from your unit.

MODEL

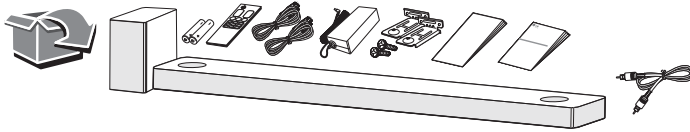
SN7Y



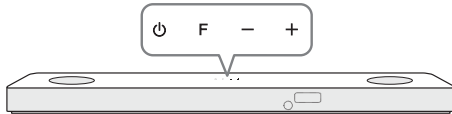
MFL71771609
2009_Rev02

www.lg.com

Copyright © 2021 LG Electronics Inc. All Rights Reserved.

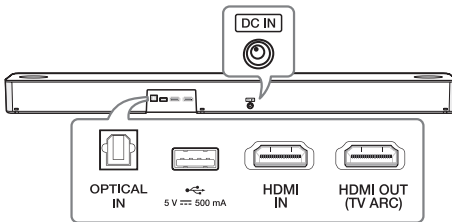


Front Panel



- ⏻ (Standby) Switches the unit ON or OFF.
- F (Function) Selects function.
- /+ (Volume) Adjusts volume.

Rear Panel



- DC IN Connect to the AC adapter.
- OPTICAL IN Connect to an optical device.
- USB Port Connect to a USB device.
- HDMI IN Connect to device with HDMI OUT.
- HDMI OUT (TV ARC) Connect to a TV.

!

- It is recommended that you purchase a USB gender separately for the convenience of USB insertion and extraction. (Recommended USB gender type : USB 2.0 extension cable)
- Make sure to properly align and connect the optical cable; improper alignment may cause damage to the jack.

Subwoofer Connection

Place the wireless subwoofer near the sound bar and follow steps below.

- 1 Connect the power cord of the sound bar and the wireless subwoofer to the outlet.
- 2 Turn on the sound bar.
 - The sound bar and wireless subwoofer will be **automatically** connected. The subwoofer's green LED turns on.

Manual Subwoofer Connection

If the subwoofer does not make sound, try to connect manually.

- 1 Press **PAIRING** on the rear of the wireless subwoofer.
 - The green LED on the rear of the wireless subwoofer blinks quickly. (If the green LED does not blink, press and hold the **PAIRING**.)
- 2 Turn on the sound bar.
 - Pairing is completed. The green LED on the rear of the wireless subwoofer turns on.

!

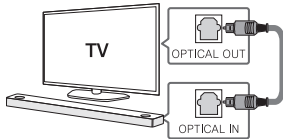
Keep the sound bar and the subwoofer away from the device (ex. wireless router, microwave oven, etc.) over 1 m (3.3 ft) to prevent wireless interference.

TV Connection

Connect the sound bar and TV using Optical (A) or HDMI ARC (B).

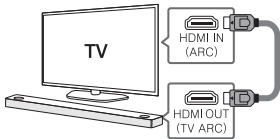
A Optical Connection

- 1 Connect the sound bar to the TV using Optical cable.
- 2 Set up [External Speaker (Optical)] on your TV setting menu.



B HDMI (ARC) Connection

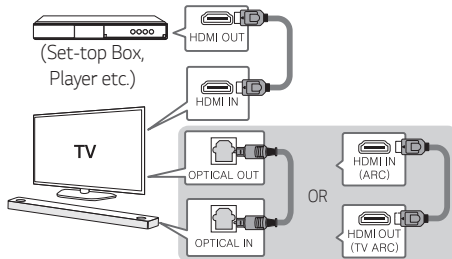
- 1 Connect the sound bar to the TV using HDMI cable.
- 2 Set up [External Speaker (HDMI ARC)] on your TV setting menu.



- HDMI connection is unavailable if your TV does not support HDMI ARC.
- If this unit is connected by OPTICAL and ARC at the same time, the ARC signal has a higher priority.

Additional Device Connection

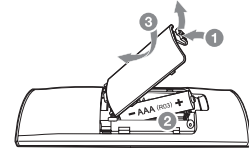
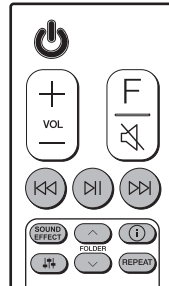
- 1 Connect to the external device like as follow.



- 2 Set the input source by pressing F repeatedly.

Remote control

Replacement of Battery



⏪/⏩: Skip/Search

⏮: Play/Pause

- **Bluetooth connection lock (BT LOCK):** Select the **Bluetooth** function by pressing F repeatedly. Long press ⏮ and press it again to limit Bluetooth connection to only BT and LG TV.

SOUND EFFECT: Selects a sound effect mode.

- **TV remote:** Long press **SOUND EFFECT** and press it again to use TV remote control.

FOLDER ^/∨: Searches a folder.

ⓘ: Displays the information of a file, an input source or connected **Bluetooth** device name.

- **Auto Power ON/OFF:** Long press ⓘ and press it again.



⏮: Adjusts sound level of each speaker.

- **Surround sound:** Long press ⏮ and press it again.

REPEAT: Listens to your files repeatedly or randomly.

Additional Information

Specification

Power consumption	Refer to the main label.
AC adapter	<ul style="list-style-type: none">• Model : DA-50F25• Manufacturer : Asian Power Devices Inc.• Input : 100 - 240 V ~ 50 - 60 Hz• Output : 25 V  2 A
Dimensions (W x H x D)	Approx. 890.0 mm x 65.0 mm x 119.0 mm With foot (35.0 inch x 2.5 inch x 4.6 inch)
Bus Power Supply (USB)	5 V  500 mA
Amplifier (Total RMS Output power)	380 W RMS

Design and specifications are subject to change without notice.



Rear Speakers Ready

Ready for surround sound with Rear Speakers Kit sold separately. (SPK8-S)

To enjoy content containing Dolby Atmos® and DTS:X®, the connected device and content must support Dolby Atmos® and DTS:X®.

OPEN SOURCE SOFTWARE NOTICE INFORMATION

To obtain the source code under GPL, LGPL, MPL, and other open source licenses, that is contained in this product, please visit <http://opensource.lge.com>.

In addition to the source code, all referred license terms, warranty disclaimers and copyright notices are available for download.

LG Electronics will also provide open source code to you on CD-ROM for a charge covering the cost of performing such distribution (such as the cost of media, shipping, and handling) upon email request to opensource@lge.com.

This offer is valid for a period of three years after our last shipment of this product. This offer is valid to anyone in receipt of this information.

Industry Canada Statement

[For having wireless function (WLAN, Bluetooth,...)]

This device contains licence-exempt transmitter(s)/ receiver(s) that comply with Innovation, Science and Economic Development Canada's licence-exempt RSS(s).

Operation is subject to the following two conditions:

- (1) This device may not cause interference.
- (2) This device must accept any interference, including interference that may cause undesired operation of the device.

CAN ICES-3 (B)/NMB-3(B)

IC Radiation Exposure Statement

[For having wireless function (WLAN, Bluetooth,...)]

This equipment complies with IC radiation exposure limits set forth for an uncontrolled environment. This equipment should be installed and operated with minimum distance 20 cm (7.8 inches) between the antenna & your body.

NOTE: THE MANUFACTURER IS NOT RESPONSIBLE FOR ANY RADIO OR TV INTERFERENCE CAUSED BY UNAUTHORIZED MODIFICATIONS TO THIS EQUIPMENT. SUCH MODIFICATIONS COULD VOID THE USER'S AUTHORITY TO OPERATE THE EQUIPMENT.

WARNING

[For product having the wireless function using 5 GHz frequency bands]

- i. the device for operation in the band 5150–5250 MHz is only for indoor use to reduce the potential for harmful interference to co-channel mobile satellite systems;
- ii. for devices with detachable antenna(s), the maximum antenna gain permitted for devices in the bands 5250-5350 MHz and 5470-5725 MHz shall be such that the equipment still complies with the e.i.r.p. limit;
- iii. for devices with detachable antenna(s), the maximum antenna gain permitted for devices in the band 5725-5850 MHz shall be such that the equipment still complies with the e.i.r.p. limits as appropriate; and
- iv. [for devices operating in the band 5250-5350 MHz having an e.i.r.p. greater than 200 mW] antenna type(s), antenna models(s), and worst-case tilt angle(s) necessary to remain compliant with the e.i.r.p. elevation mask requirement set forth in section 6.2.2.3 of RSS-247 shall be clearly indicated.

Users should also be advised that high-power radars are allocated as primary users (i.e. priority users) of the bands 5250-5350 MHz and 5650-5850 MHz and that these radars could cause interference and/or damage to LE-LAN devices.



LG Customer Information Center	
1-888-542-2623	CANADA
Register your product Online!	
www.lg.com	